

EARL PUMPING STATION

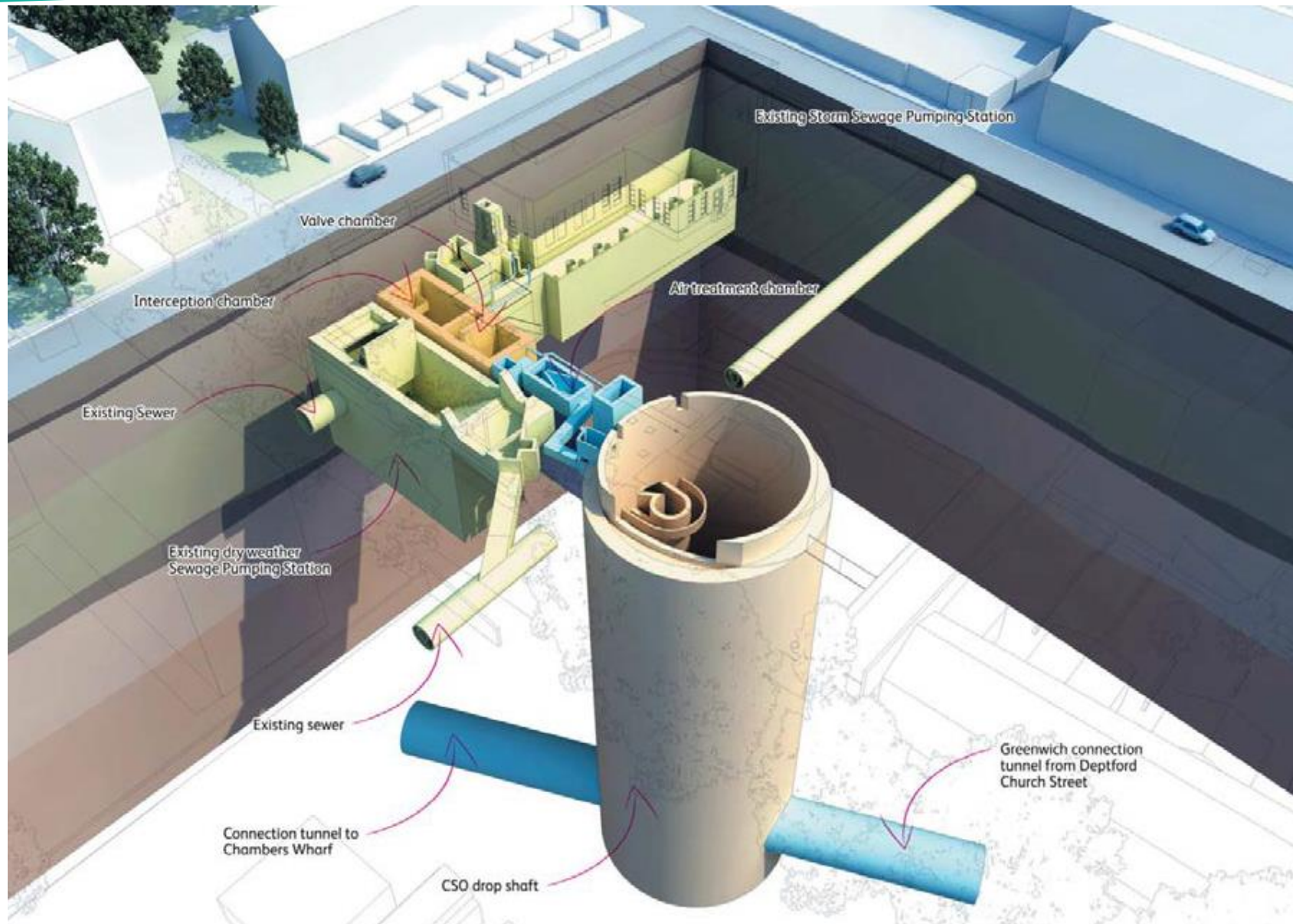
Community Liaison Working Group - Monday 1 November 2021



Tideway



What we are building...



- 50m deep drop shaft
- 5m internal diameter tunnel
- 10m deep Combined Sewer Outfall (CSO)
- Various services diversions
- Will reduce annual sewer discharges into the River Thames locally from around 25 to just 4

CONSTRUCTION UPDATE

July to November 2021



Tideway



11:14 30/JUL/2020

CONSTRUCTION UPDATE

July to November 2021



Tideway

CSO

- Deep Soil Mixing works completed
- Jet grouting started
- Guide walls completed
- Secant piles started

Shaft

- Hoist removed
- Vortex top plinths completed
- Shaft water temporary fill (flooding) completed
- Shaft enclosure wall started

Surface works

- Watermain replacement completed



Other

- Extra welfare removed and area rearranged for shaft works purpose
- Muck bin reinstated, silos and pant installed for the CSO geotechnical works

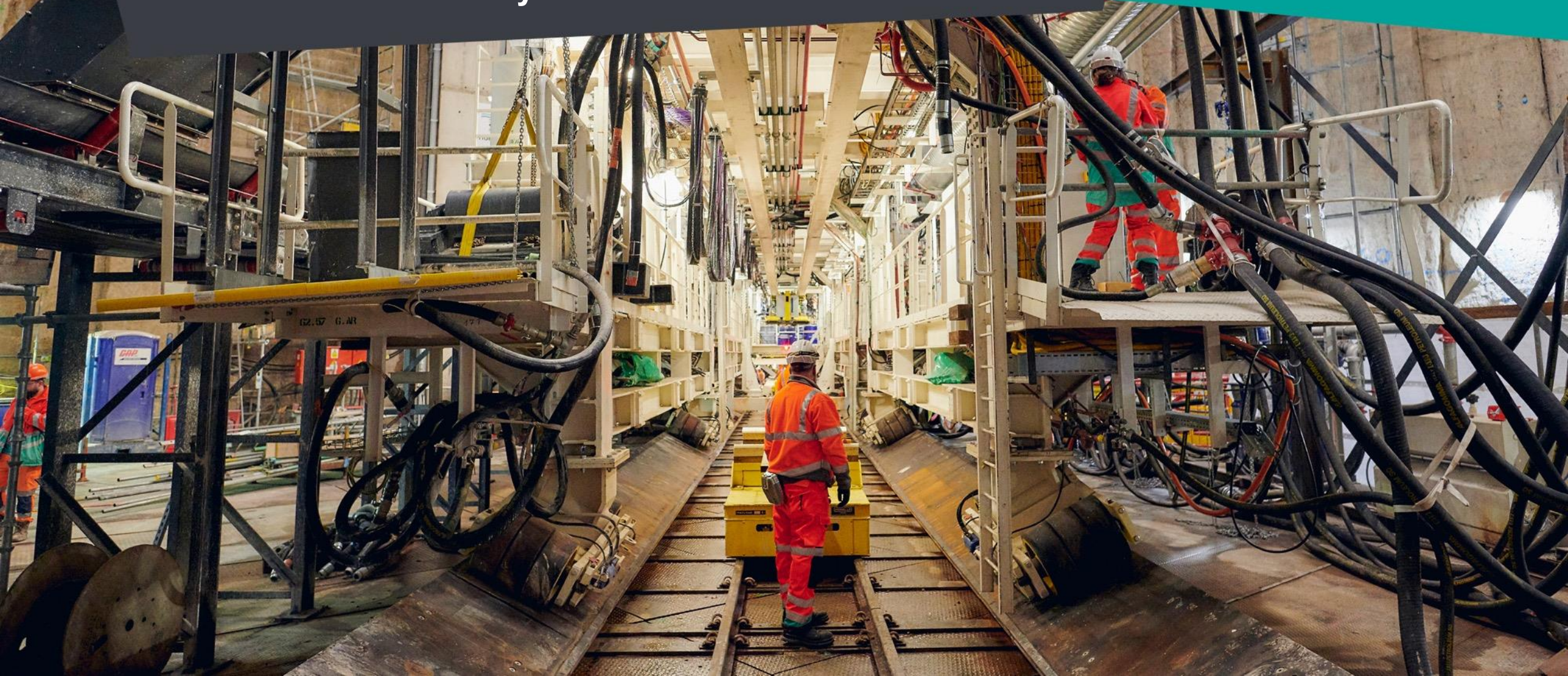


WHAT IS COMING NEXT?

November 2021 and beyond...



Tideway

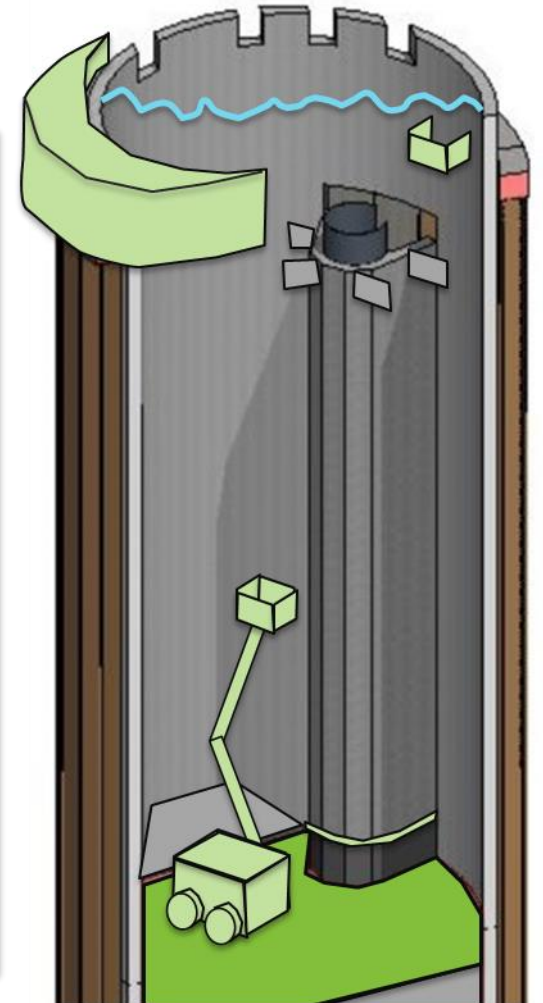
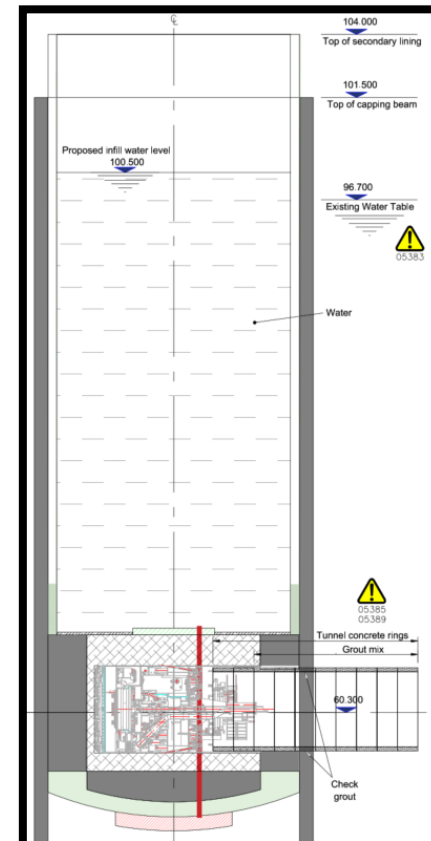


SHAFT WORKS



Tideway

- The shaft is temporarily full of water ready to allow the TBM crossing.
- [Tunnel Tracker](#)
- Meanwhile we complete the shaft enclosure at surface level.
- Once TBM will have passed through, we will :
 - Drain the shaft,
 - Complete concrete landing works at the top of the Vortex tube,
 - Make good concrete surfaces within the shaft,
 - Remove the concrete backfill and the tunnel segments located at the bottom of the shaft.

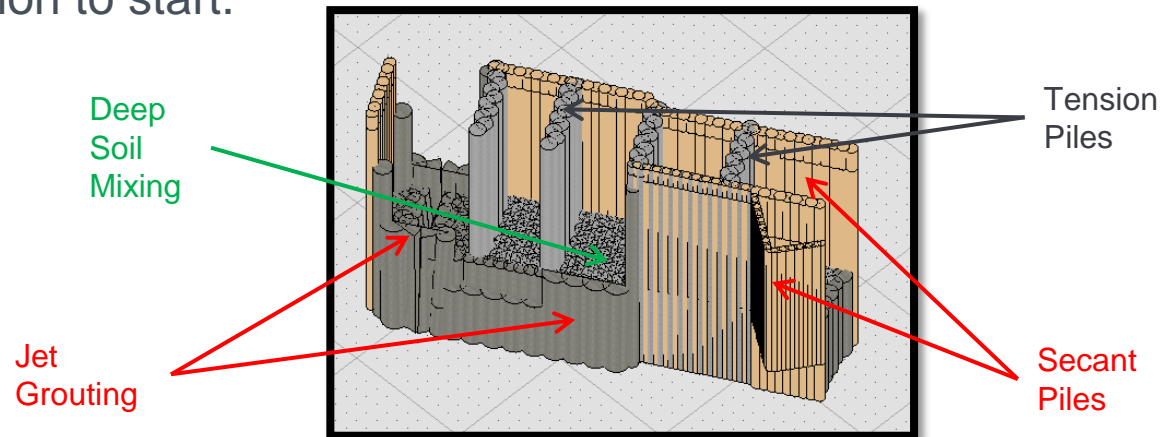


COMBINED SEWER OVERFLOW



Tideway

- We are continuing geotechnical works using construction techniques to create a sealed box in the ground to enable us to safely excavate the CSO.
- We have completed Deep Soil Mixing works at the bottom of the box and we are continuing with Jet Grouting and Secant piles all around the box.
- Tension piles to anchor the sealed box in the ground will complete the geotechnical works prior the dewatering and the excavation to start.



THE NEXT SIX MONTHS...



Programme Overview	2021								2022							
	November		December		January		February		March		April		May			
TBM crossing																
Shaft enclosure wall (South half)																
Shaft drainage																
Shaft concrete making good / Intermediate landing																
Backfilling/segments removal																
CSO Jet grouting																
CSO secant piles																
CSO tension piles																
CSO dewatering & start of excavation																



Standard Working Hours

(08:00 - 18:00) Monday to Friday, (08:00 - 13:00) Saturday

Extended Working Hours

(18:00 - 20:00) Monday to Friday, (13:00 - 17:00) Saturday

AND BEYOND

[illegible]

ENVIRONMENT



Tideway



NOISE & AIR QUALITY



Month	Noise	Air Quality
	S61 Exceedances	24h PM ₁₀ Exceedance
June 21	1	0
July 21	0	0
Aug 21	0	0
Sept 21	0	0

June Exceedance:

Linked to concrete pours for Shaft Secondary Lining – shut down. Works occurring next to noise monitor and had progressed to the site surface.

Local Authority was informed. Works activity ceased following this.

NOISE MITIGATION

Key methods for reducing noise on site:

- Planning construction works methodologies with noise impacts as a key consideration (Section 61 consent)
- Monitoring noise across site to identify exceptional noise sources
- Screening static plant where possible
- Screening known loud activities where possible (concrete breaking, floor sawing etc)
- Sourcing/developing low noise plant and equipment where possible
- Shutting down plant and equipment when not in use
- Off site fabrication of construction elements where possible

- Removal of concrete blocks during demolition to avoid concrete breaking
- Trailing innovative techniques to reduce noise like chemical demolition agents or hydraulic splitting of concretes.



ARCHITECTURE & LANDSCAPING



Tideway



A&L UPCOMING SUBMISSION

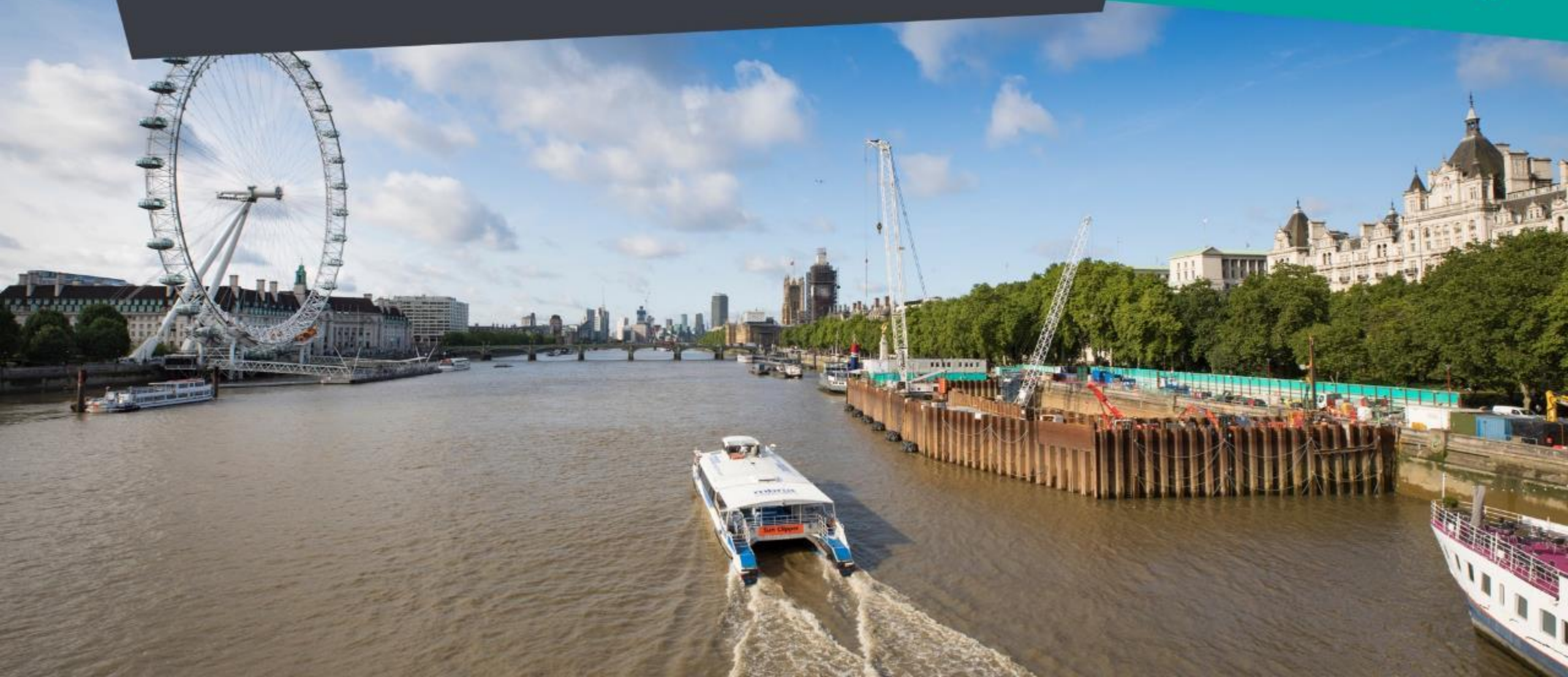


- The draft submission of the Architecture and Landscaping elements of the works at Earl Pumping Station is expected to be submitted to the London Borough of Lewisham by end-2021/early-2022.
- The draft application will be submitted to discharge the relevant requirements set out in Schedule 3 of the TWUL Development Consent Order 2014 (as amended), granted by the Secretaries of State in September 2014. This Order approved the principle of the development, including the necessity and location of the permanent above ground works and their maximum height.
- This means that the scope of what the London Borough of Lewisham can approve and the comments that they can consider, is limited to the size, height, visual appearance, and materiality of the proposed structures and works because the application only relates to the above ground materials, finishes and soft & hard landscaping.
- Nearer to the submission or immediately following the submission of the draft proposal, a CLWG meeting will be scheduled to present the draft proposal to the community for comment. Further engagement will also be undertaken outside of this forum.
- Once submitted, comments are to be sent to London Borough of Lewisham at planning@lewisham.gov.uk.

COMMUNITY INVESTMENT



Tideway



Celebrating 8yrs of partnership with London Youth Rowing



Tideway staff past and present joined schools from the Active Row and Breaking Barriers programme and the whole team from London Youth Rowing at the Olympic Park to celebrate the success of our partnership with the charity.



Creekside Discovery Centre, Deptford



<https://www.creeksidecentre.org.uk/>



CREEKSIDE DISCOVERY CENTRE OPEN DAY

25 SEPTEMBER 2021 11am – 3pm **FREE ENTRY**



Activities on land and our beach with crab racing, prizes, quizzes and games for all the family.

Find local archaeology, discover creek fish and wildlife with visiting experts.

Food: Dookies Caribbean Grill – chicken, fish and vegan – £1 per ticket for first 100 portions.

Find out what we do for you:
Creekside Discovery Centre, 14 Creekside,
Deptford, London SE8 4SA



Book online:
[creeksidecentre.org.uk](https://www.creeksidecentre.org.uk)



**CREEKSIDE
DISCOVERY CENTRE**
for people and wildlife

LEGACY

COMMUNITY INVESTMENT



Whenever Tideway East staff raise an observation, whether onsite or in writing, a donation is triggered for CVB to make to a charity, chosen by the Tideway East workforce.

These charities have previously benefited from our observations about safety, welfare, the environment and workplace.



Support for families and acutely sick children.
Research into children's health and life-saving medical equipment



Emotional support to anyone struggling to cope, or at risk of suicide including 24/7 telephone support



Response to serious trauma emergencies in and around London. Using a helicopter and rapid response vehicles, LAA performs advanced medical interventions at the scene in life-threatening, time-critical situations.



24-hour rescue including on River Thames and Flood Rescue Team.
RNLI educate people and work with organisations to tackle drowning in communities at risk all around the world.

KICKSTART SCHEME



100% Government Funded Work Placement for 16 – 24
Yr Olds

We have signed up with the scheme, to provide extended work experience for 16 – 24-year-olds that are on Universal Credit and at risk of long-term unemployment. The Princes Trust also supports the scheme.

To date, Costain has employed seven young people nationwide, working in the Highways and Natural Resources sectors - **including three here on Tideway East.**

Autumn 2021



Tideway

BERMONDSEY • DEPTFORD • GREENWICH • SHADWELL • ROTHERHITHE

RIVER TIMES

YOUR UPDATE ON LONDON'S SUPER SEWER



Deptford urban wildlife charity gets funding boost from Tideway
Page 7

LOCAL NEWS

TBM ANNIE UPDATE FROM GREENWICH PUMPING STATION

'Annie', a giant tunnel boring machine (TBM) creating the 4.5km link between Greenwich and London's new super sewer, is now around a quarter of the way to her destination.

The 'Greenwich connection tunnel' is a vital piece of Tideway's new infrastructure needed to clean up the River Thames.

Six TBMs are being used to create the super sewer and its connection tunnels on the Tideway project, and Annie is one of only two still working underground.

Although not as big as the TBMs used on the main tunnel, Annie is still around 6.4m wide, and will excavate through Tideway's sites at Deptford Church Street and Earl Pumping Station.

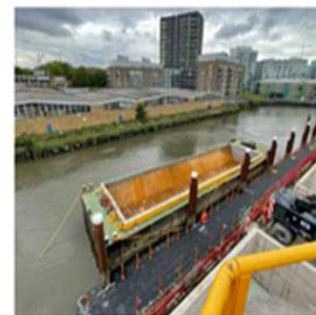
DEPTFORD CREEK USED TO REMOVE TUNNELLING SPOIL FROM GREENWICH SITE

Barges have begun to navigate Deptford Creek to remove tunnelling spoil from Phoenix Wharf at Tideway's Greenwich Pumping Station site.

The creek, also known as the River Ravensbourne, is a tributary of the Thames, and facilitates marine access for Tideway's barges.

Using the river helps keep tens of thousands of lorries off London's congested roads, and produces far fewer emissions than the HGV equivalent.

For the latest updates visit www.tideway.london/news



LOCAL NEWS

TBM SELINA WITHIN 5KM OF SUPER SEWER FINISH LINE



The tunnel boring machine (TBM) being used to create the final, easternmost section of London's new super sewer now has less than 5km to go.

Once complete, the Thames Tideway Tunnel will be fully excavated from Acton in west London, to Abbey Mills Pumping Station, where TBM 'Selina' is set to finish.

TBM Selina arrived in London last summer, carried by a giant vessel called a Skylift 3000, before being lowered 60m underground at Tideway's site in Bermondsey.

At the time of writing, Selina was between Brunel's Thames Tunnel and the Rotherhithe Tunnel, before making her way past King Edward Memorial park and on to her destination.

For the latest updates visit www.tideway.london/news



TBM URSULA LIFTED FROM SITE AFTER 7.6KM TUNNEL DRIVE

A giant floating crane was used to lift a 700-tonne tunnel boring machine from Tideway's Chambers Wharf site in Bermondsey.

The machine, TBM Ursula, had finished its 7.6km tunnel drive from Kirtling Street in Battersea to Bermondsey.

The crane, the 'Matador 3', had travelled from Rotterdam for the manoeuvre, which first involved lifting Ursula from the bottom of a 60m-deep shaft.

Delivery Manager Jim Avant said: "This is another step towards a cleaner River Thames and is another huge milestone involving so many of our partners to ensure a successful and safe operation. The lifting and removal of TBM Ursula from site required months of detailed planning and collaboration across our teams."





THANK YOU



RECONNECTING LONDON WITH THE RIVER THAMES

#SuperSewer

www.tideway.london