

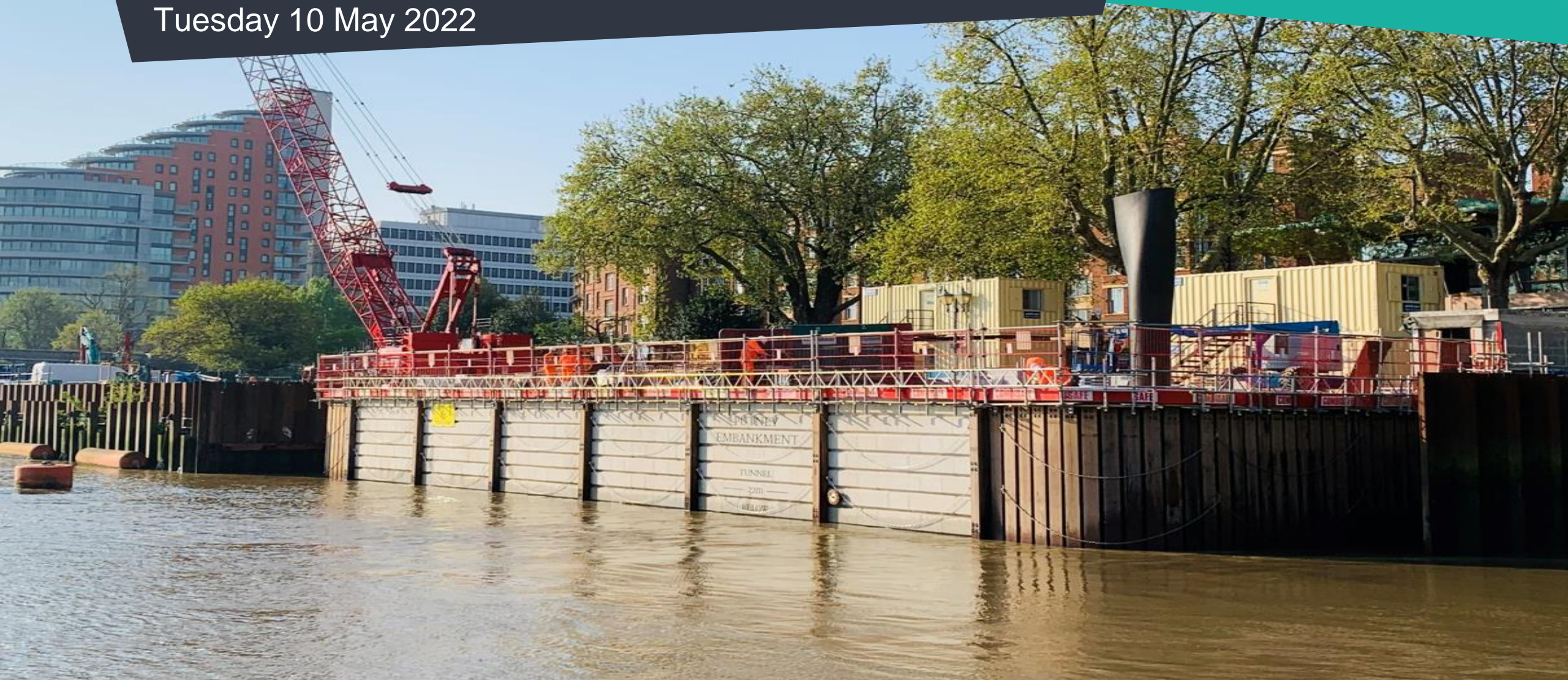
PUTNEY EMBANKMENT FORESHORE & BARN ELMS

Community Liaison Working Group

Tuesday 10 May 2022



Tideway



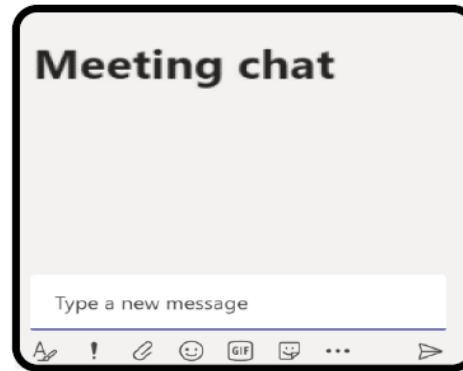
Agenda

1. Welcome & Housekeeping
2. Barn Elms Update – Richard Forrester
3. Putney Embankment Foreshore Update – Scott Hughes
4. Community Engagement Update – Katie Ashton
5. Any Other Business

Welcome



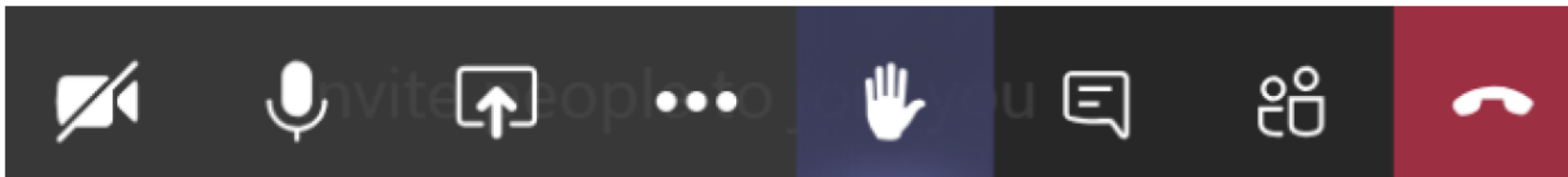
Test your speakers/headphones



Turn off your microphone



Check out the options to 'raise your hand' or 'chat' during this meeting

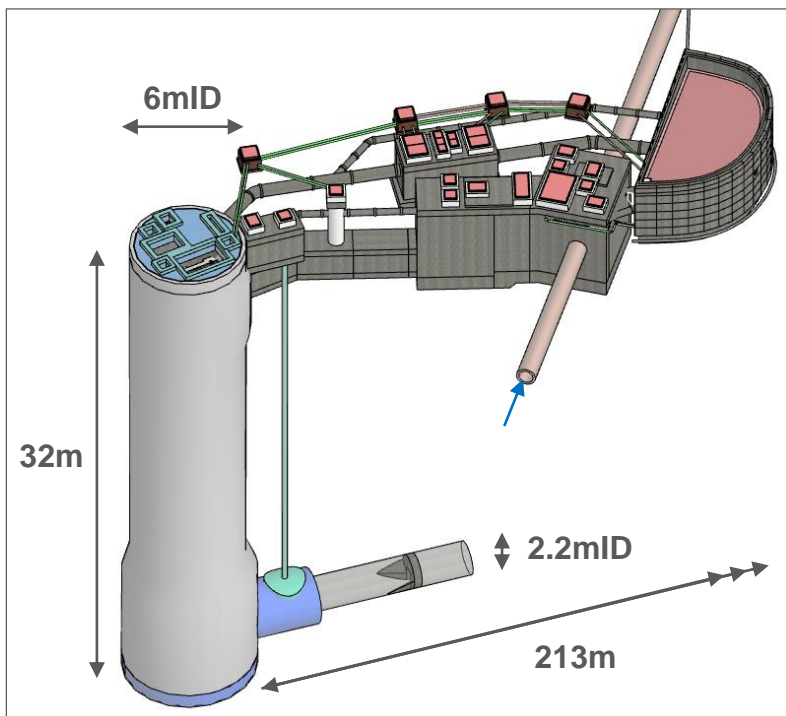


A dark blue trapezoidal graphic with a white border, tilted slightly to the right, containing the text 'BARN ELMS' in white, bold, sans-serif capital letters.

BARN ELMS

Richard Forrester
Section Manager

Barn Elms Overview



CSO & Shaft Site Setup



Recent Construction Progress

Our milestones since October 2021:

Shaft –

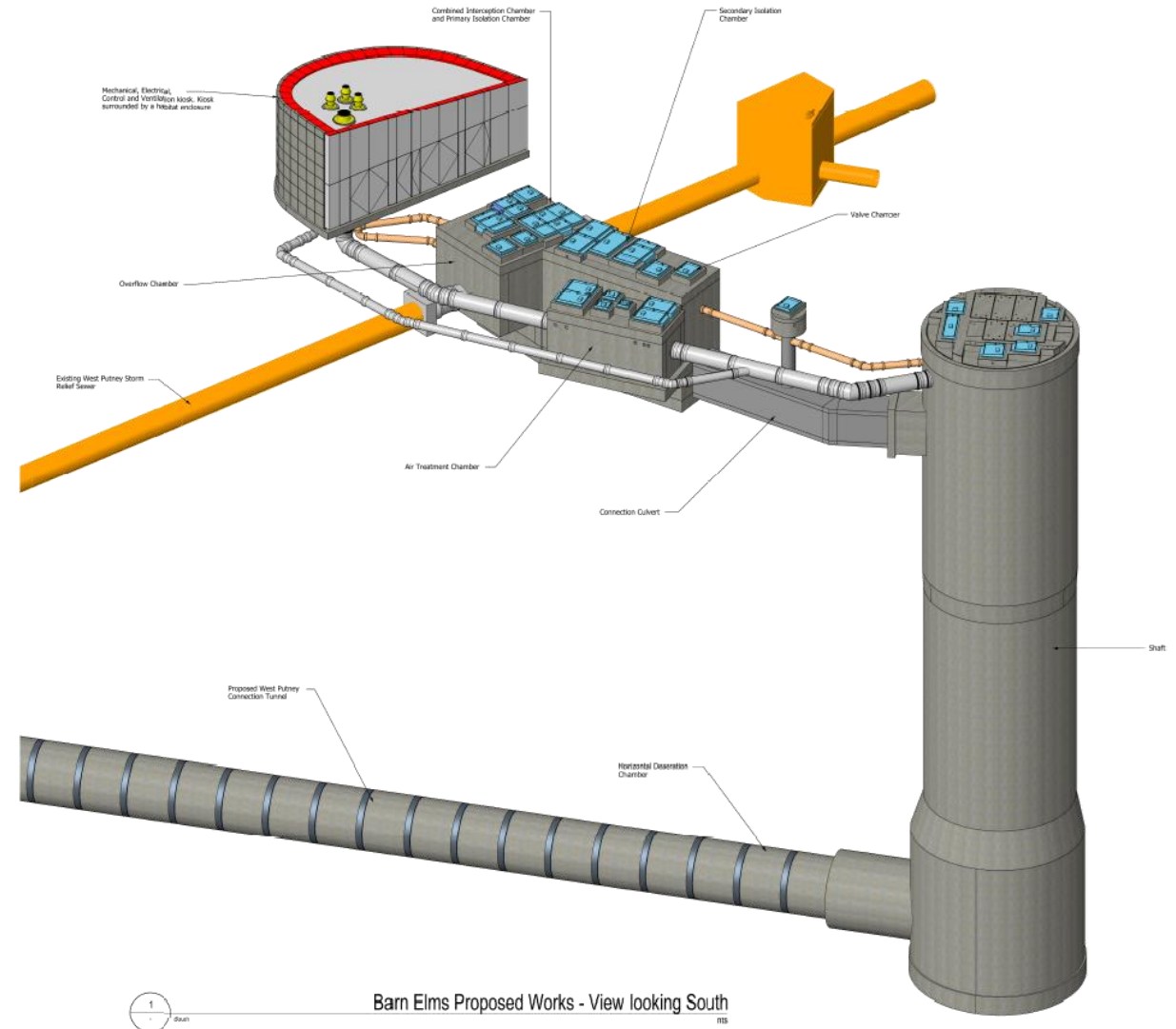
- Completed the shaft secondary lining
- Completed the shaft internal structures
- Installed the shaft cover slab and access covers

Surface -

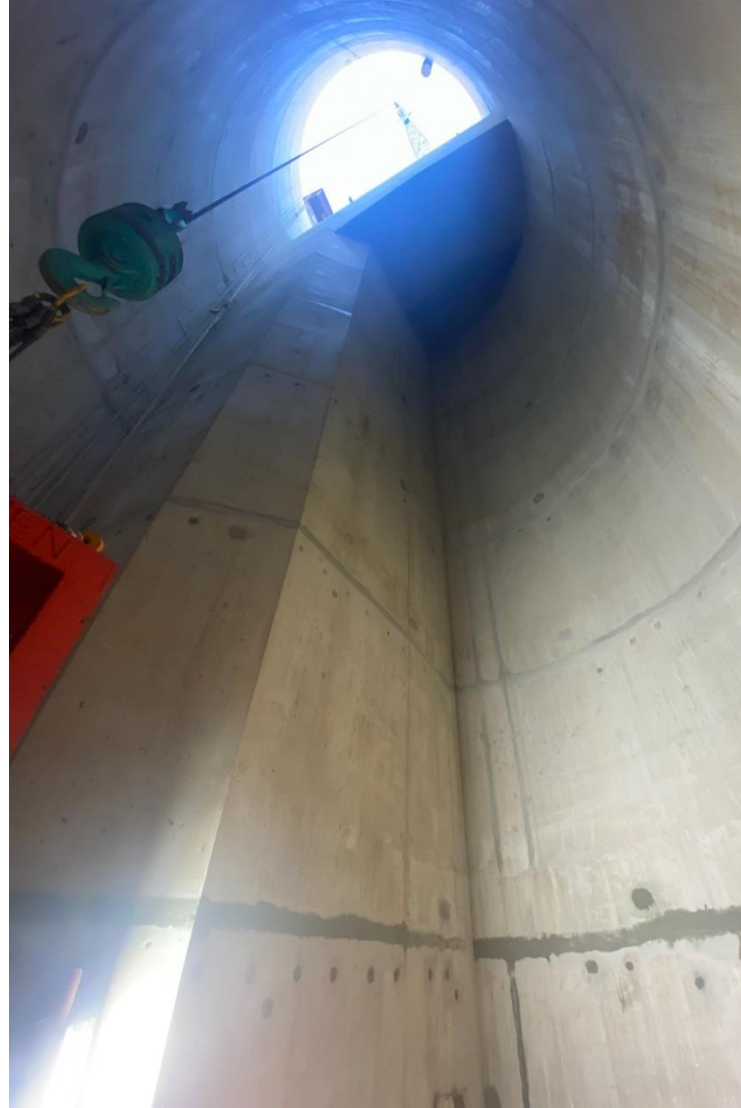
- Completed all sub-surfaces works
- All structures have been backfilled
- All access covers installed
- Commenced landscaping works
- Removed hoarding

Kiosk -

- Completed the brown roof
- Installed all electrical panels
- Vent pipes and dampers installed



Shaft, Vortex and Cover Slab



Chambers to Shaft Culvert



CSO Compound



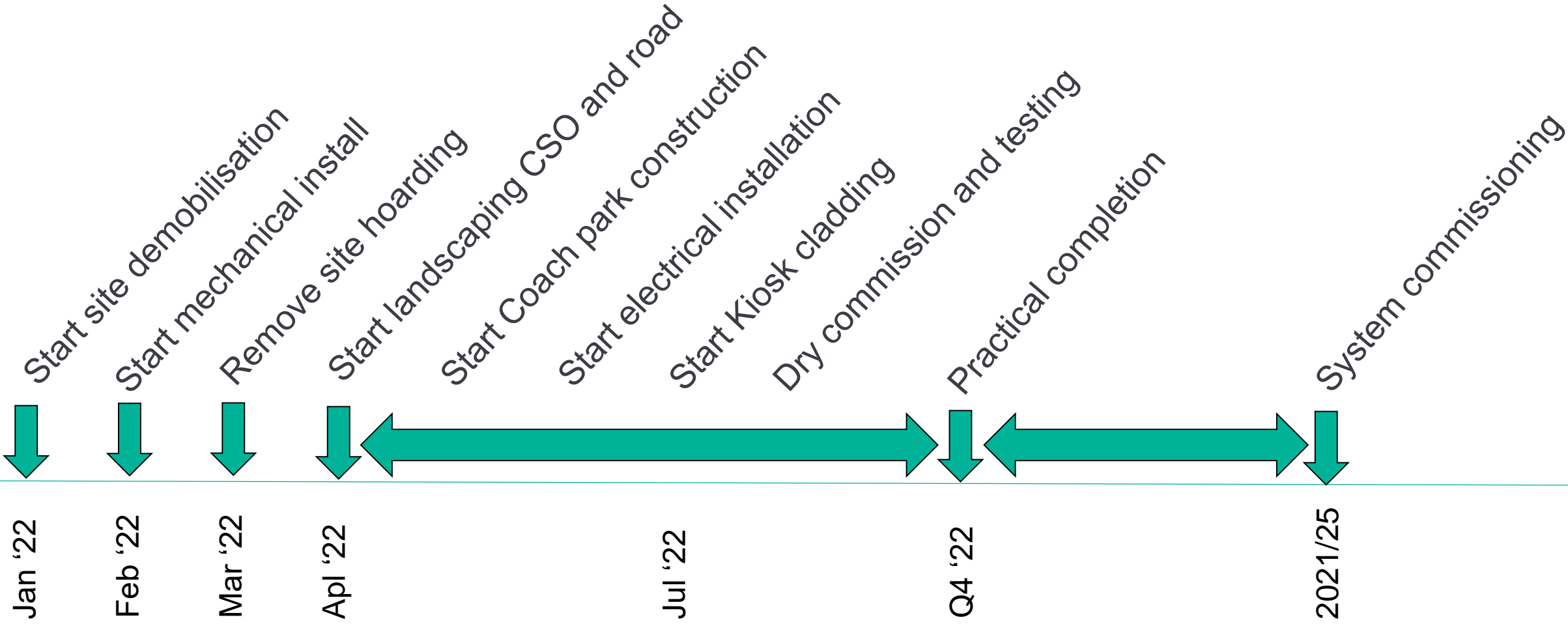
CSO Compound



Office Compound and Coach Park



Upcoming Works





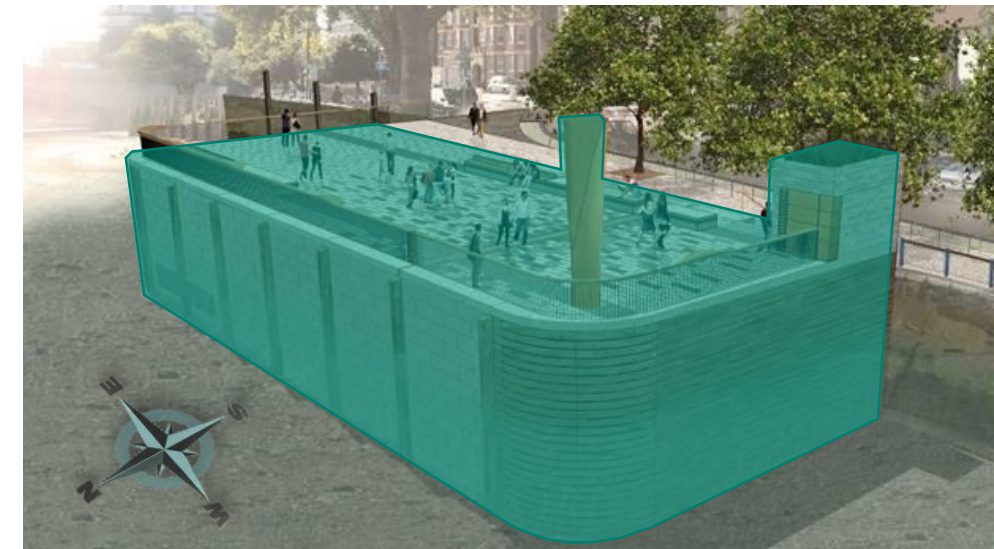
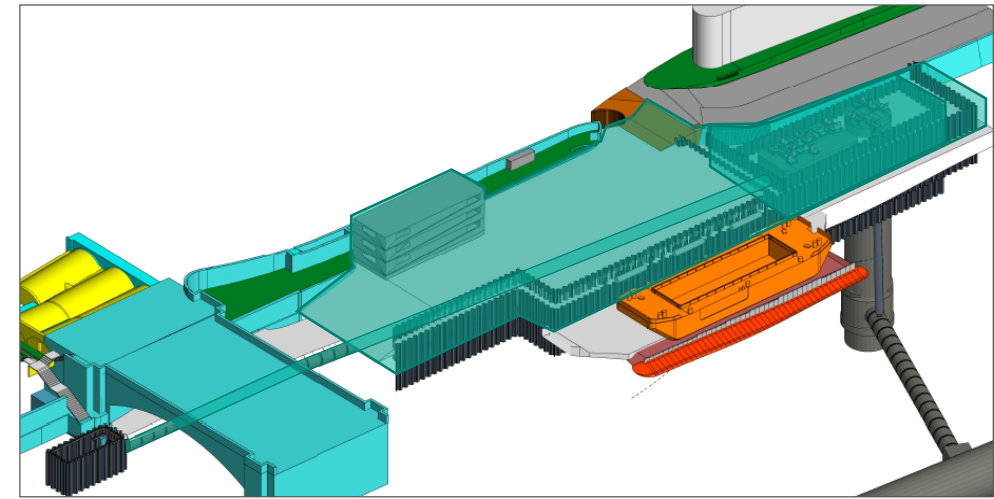
QUESTIONS?



PUTNEY EMBANKMENT FORESHORE

Scott Hughes
Section Manager

Putney Embankment Foreshore

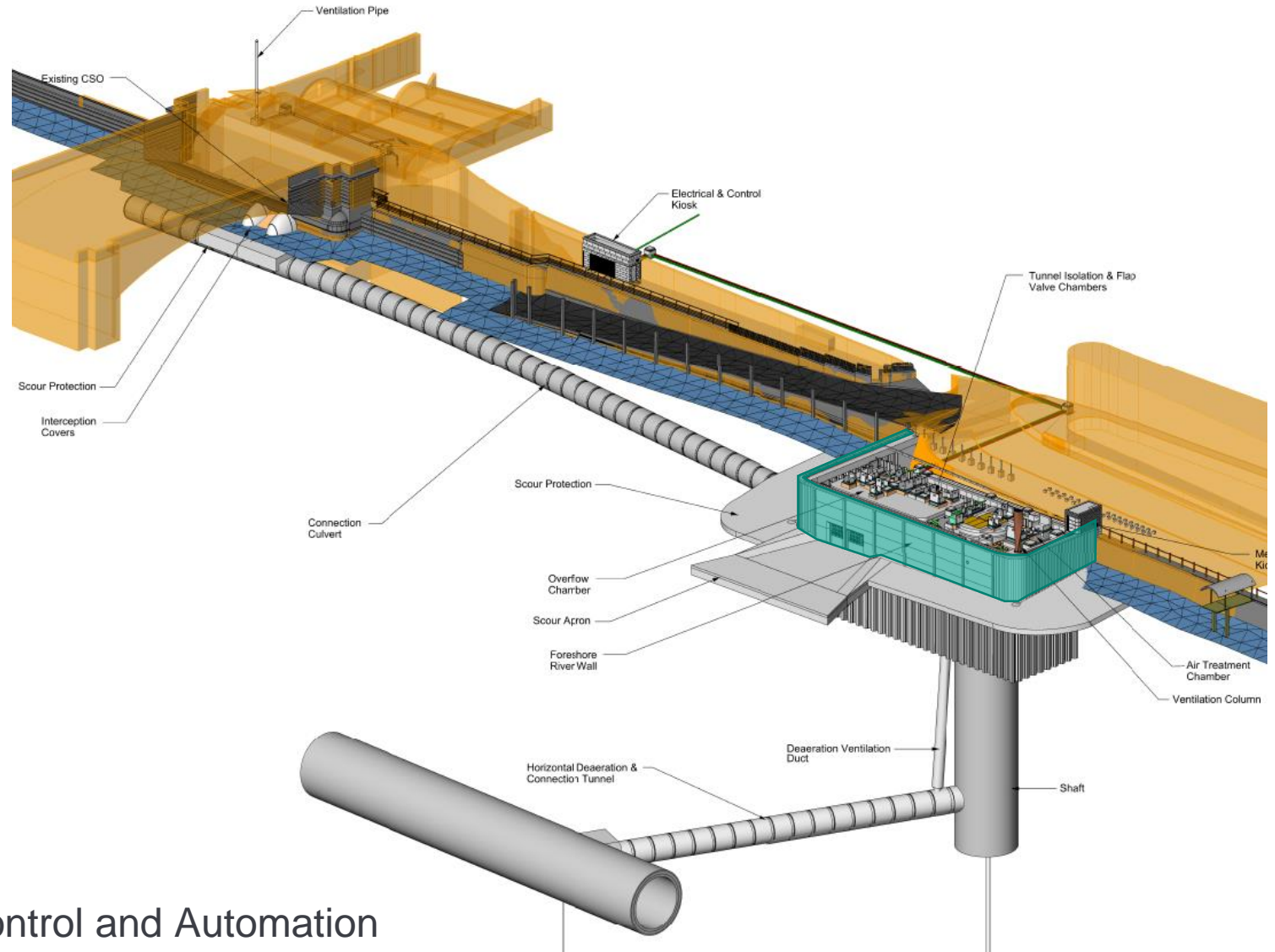


Recent Progress

Our milestones since October 2021):

- Completed LLCT and shaft works
- Completed CSO RC ring beam under Putney Bridge
- Commenced with site demob on refuge area & located new welfare
- Commenced paving install to foreshore structure
- Installed all MEICA* furniture within the new foreshore structure
- Removed the cofferdam sheet piles around the foreshore
- Commenced scour protection works
- Commenced kiosk cladding and MEICA* fitout to bring power & comms to site
- Installed the iconic Tideway bronze vent column

*Mechanical, Electrical, Instrumentation, Control and Automation



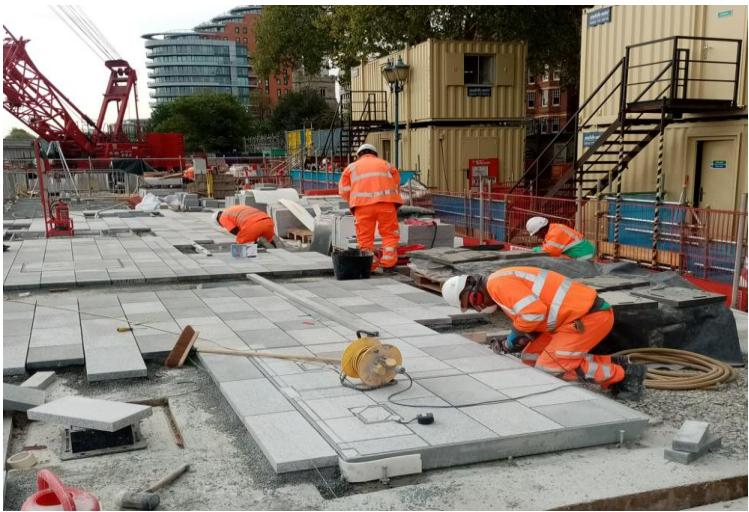
Recent Progress



Scour Protection



Recent Progress Cont.



Kiosks

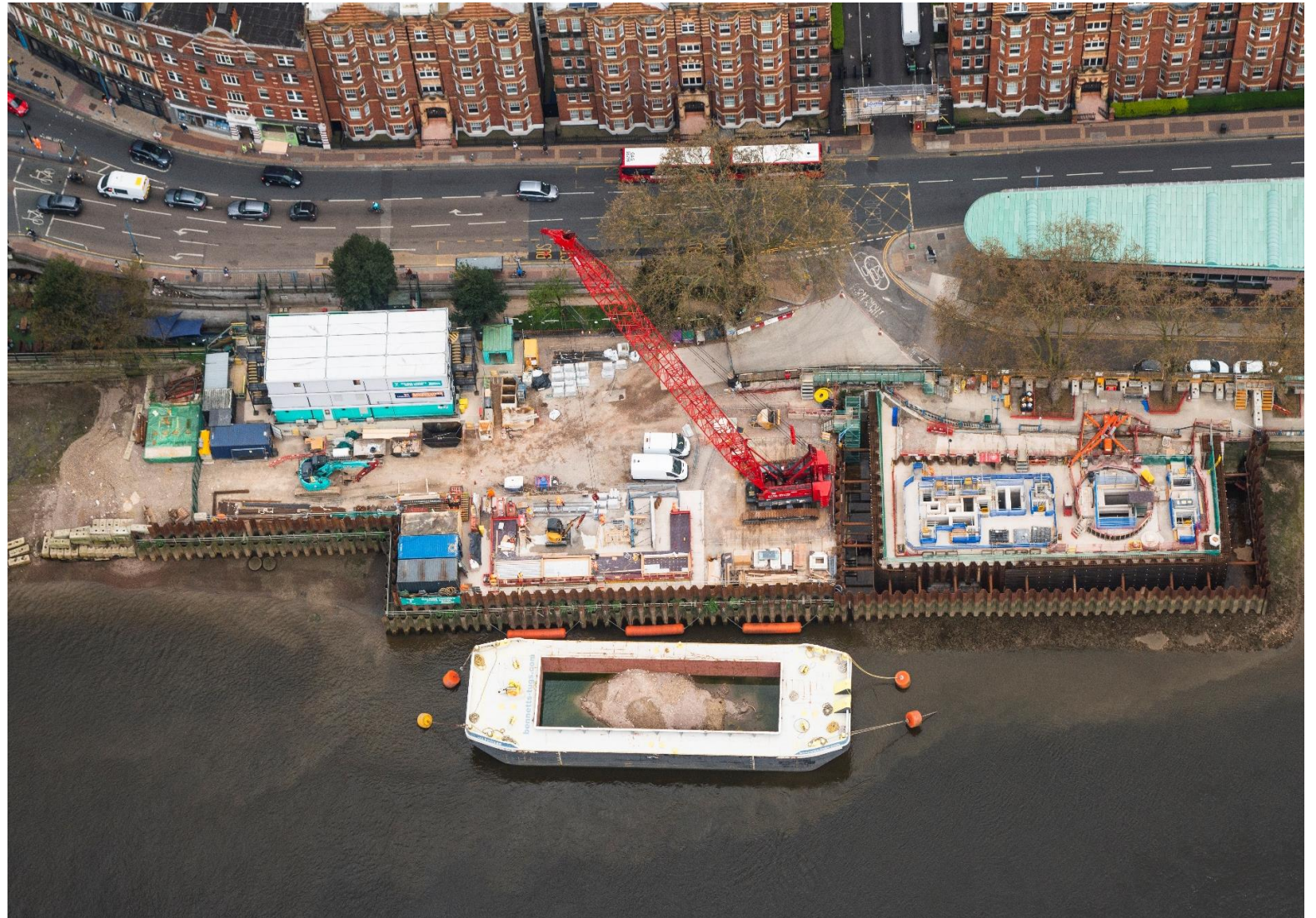


Recent Progress Cont.



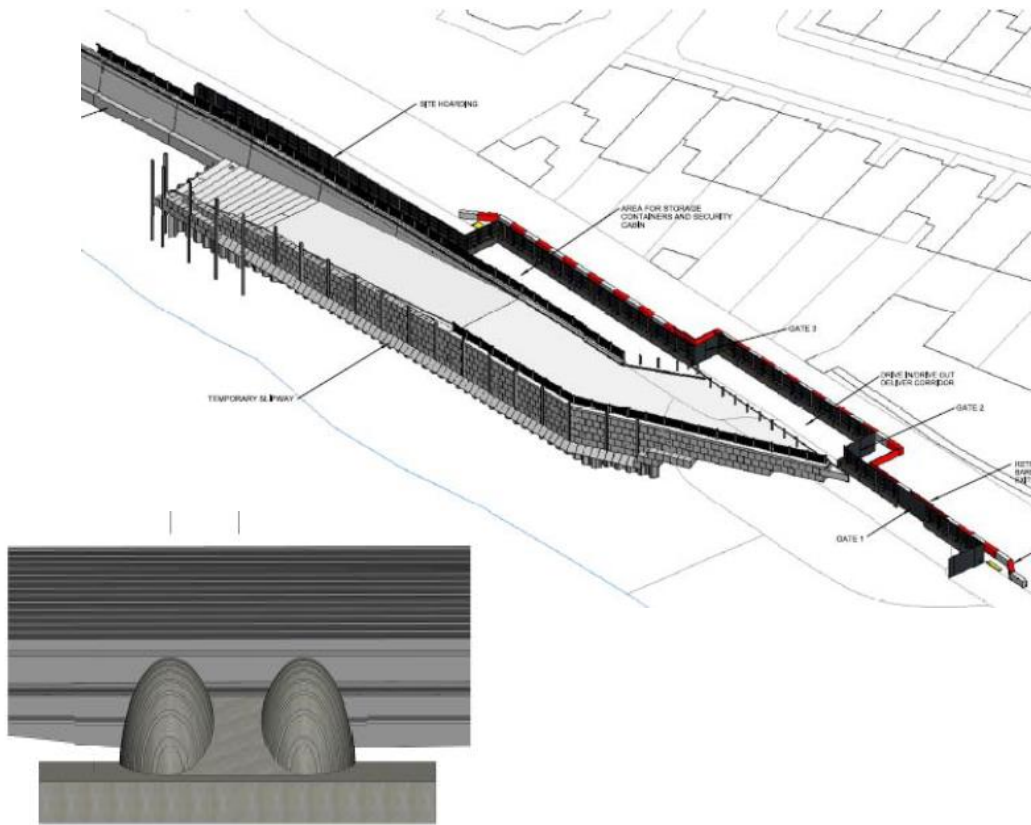
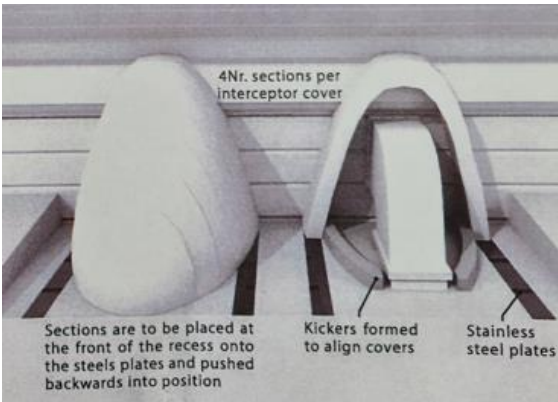
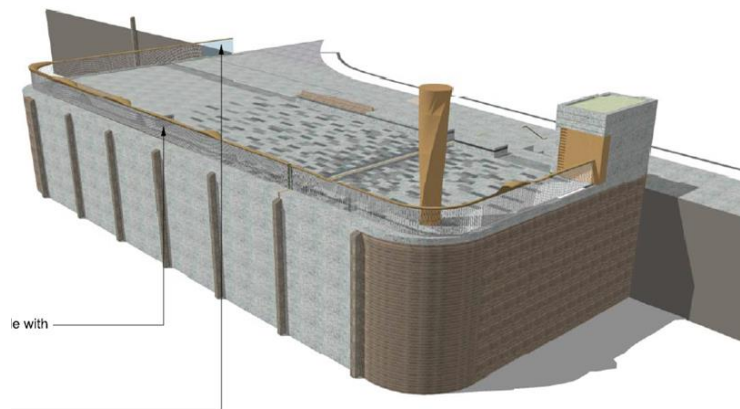
Continued & Upcoming Works

- Coping & paving works
- Kiosk cladding & brown roof install
- Mains power connection
- Refuge & campshed removal
- MEICA* T&C
- Existing slipway reinstatement
- Temporary slipway removal
- System commissioning

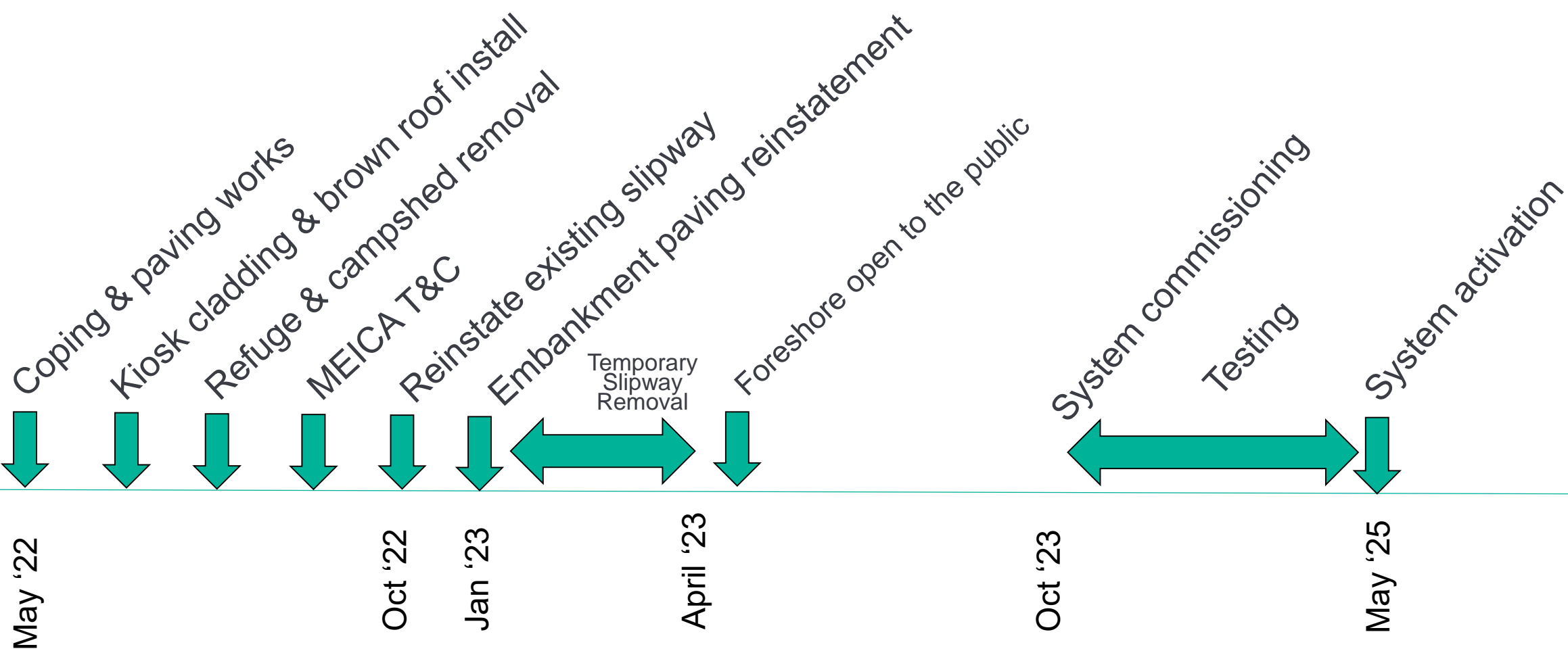


*Mechanical, Electrical, Instrumentation, Control, Automation

Continued & Upcoming Works



Upcoming Works



A dark blue parallelogram with a white border, tilted slightly to the right, containing the text 'COMMUNITY ENGAGEMENT' in white, bold, sans-serif capital letters.

COMMUNITY ENGAGEMENT

Katie Ashton
Communications Manager

Community Engagement

- 12 noise complaints have been received
 - 8 – Putney Embankment Foreshore
 - 4 – Barn Elms
- 18 general enquiries have also been received for both sites including topics such as: the CLWG, tunnel route, settlement, and the project in general



Tideway

Call: 08000 30 80 80

Email: helpdesk@tideway.london

Write to: Freepost TIDEWAY

How To Make A Claim if Affected By Tideway's Work

Who do I go to for advice?

Independent Advisory Service (IAS) Helpline for independent advice:

- 0800 917 8845 or info@tidewayias.co.uk
- For personal assistance and advice contact our Helpdesk.
 - Helpdesk: 08000 30 80 80 / helpdesk@tideway.london

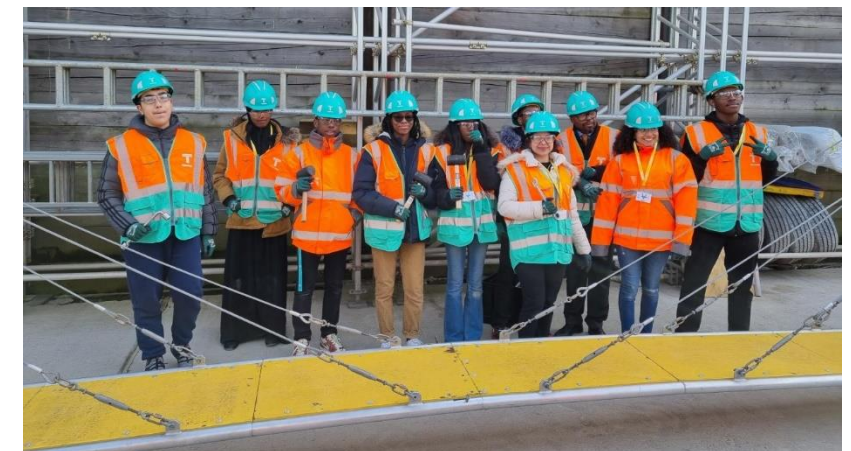
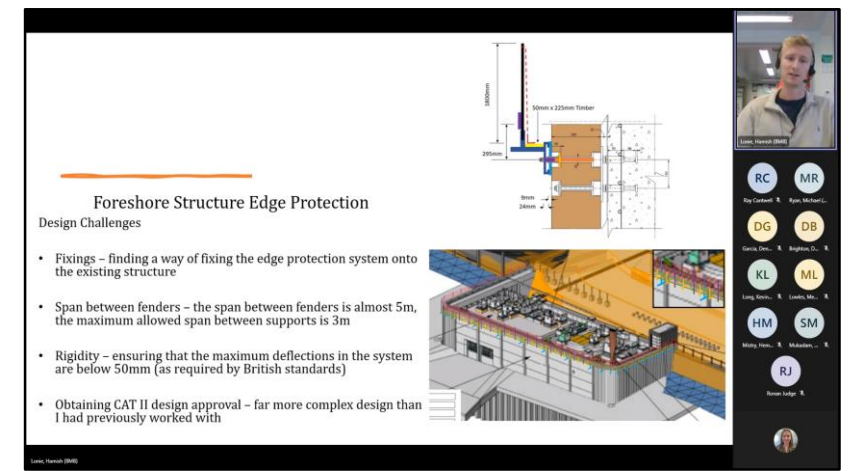
How do I submit my claim?

The Helpdesk can submit your claim to the Independent Compensation Panel (ICP) on your behalf, or you can submit your claim direct to the ICP: admin@tidewayicp.london

The IAS can send you a claim form, or you can download the form off the Tideway website: www.tideway.london/help-advice/compensation-information/Independent-Compensation-Panel

Community Engagement

- Our community support activities are continuing
- 595 volunteering hours undertaken in 2021 - including support for STEM activities and local community groups
- Over £2,000 raised for Breast Cancer Care
- Support for 26 work placement students
- Please contact us if you are aware of an opportunity or community group that we could possibly help



How To Stay Up To Date

Follow us on social media: **@TidewayLondon**



en-gb.facebook.com/TidewayLondon/



www.instagram.com/tidewaylondon/



www.linkedin.com/company/tideway-london/



twitter.com/TidewayLondon



QUESTIONS



Tideway

RECONNECTING LONDON WITH THE RIVER THAMES

#SuperSewer

www.tideway.london