

INFORMATION SHEET

2022-TDWAY-EARPS-150-ZZ-CO-70011
November 2022



EARL PUMPING STATION

UPDATE ON CONSTRUCTION PROGRESS AT THE EARL SITE

Combined Sewer Overflow

Excavation of the Combined Sewer Overflow (CSO) (pictured right) will continue until the end of 2022. We are using water mist to control any odours.

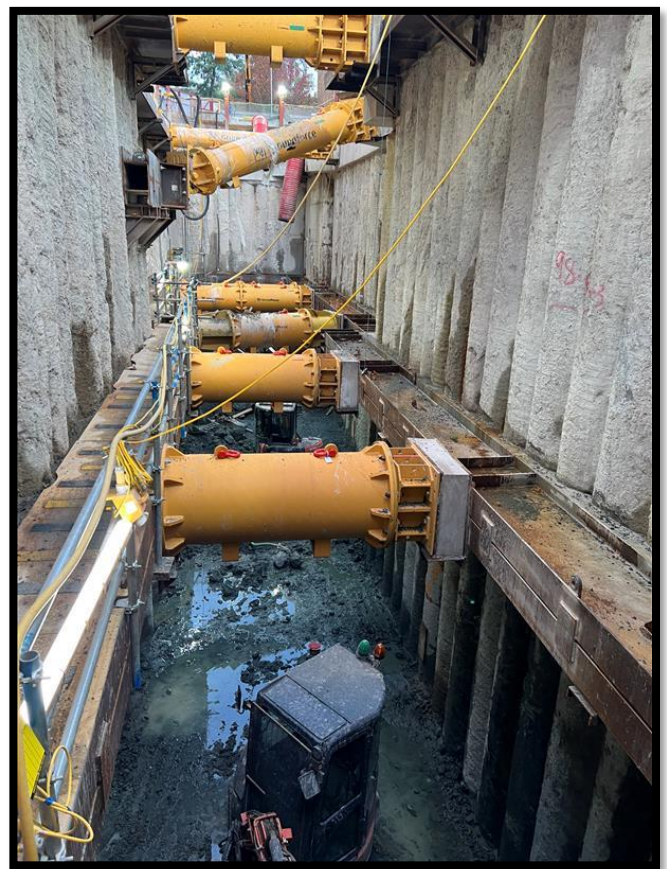
January to Autumn 2023

We will build the permanent structures that will sit within this CSO which will ultimately help to control sewage flows as they are diverted into the newly-built shaft and sewer.

Concreting works needed to build the structures will take place during extended working hours:

- Monday to Friday: 8am to 8pm
- Saturday: 8am to 5pm

We also expect an increased number of lorries delivering concrete to the site, particularly at the start of the year. We will be managing these vehicle movements to ensure disruption is minimised.



KEY INFO

WORKING HOURS

- Normal: Monday to Friday: 08:00 – 18:00, Saturday: 08:00 - 13:00
- Extended: Monday to Friday: 08:00 – 20:00, Saturday: 08:00 - 17:00
- Up to an hour for starting up and shutting down

WHAT TO EXPECT

- Some noise & vibration
- Vehicles using both gates for entry / exit
- Abnormal load deliveries

WHAT WE WILL DO

- Continue to work safely and responsibly
- Monitor site noise and use best practice
- Minimise site lighting for evening work
- Hold Community Liaison Working Group meetings

24 HOUR HELPDESK 08000 30 80 80

helpdesk@tideway.london | Freepost TIDEWAY
www.tideway.london



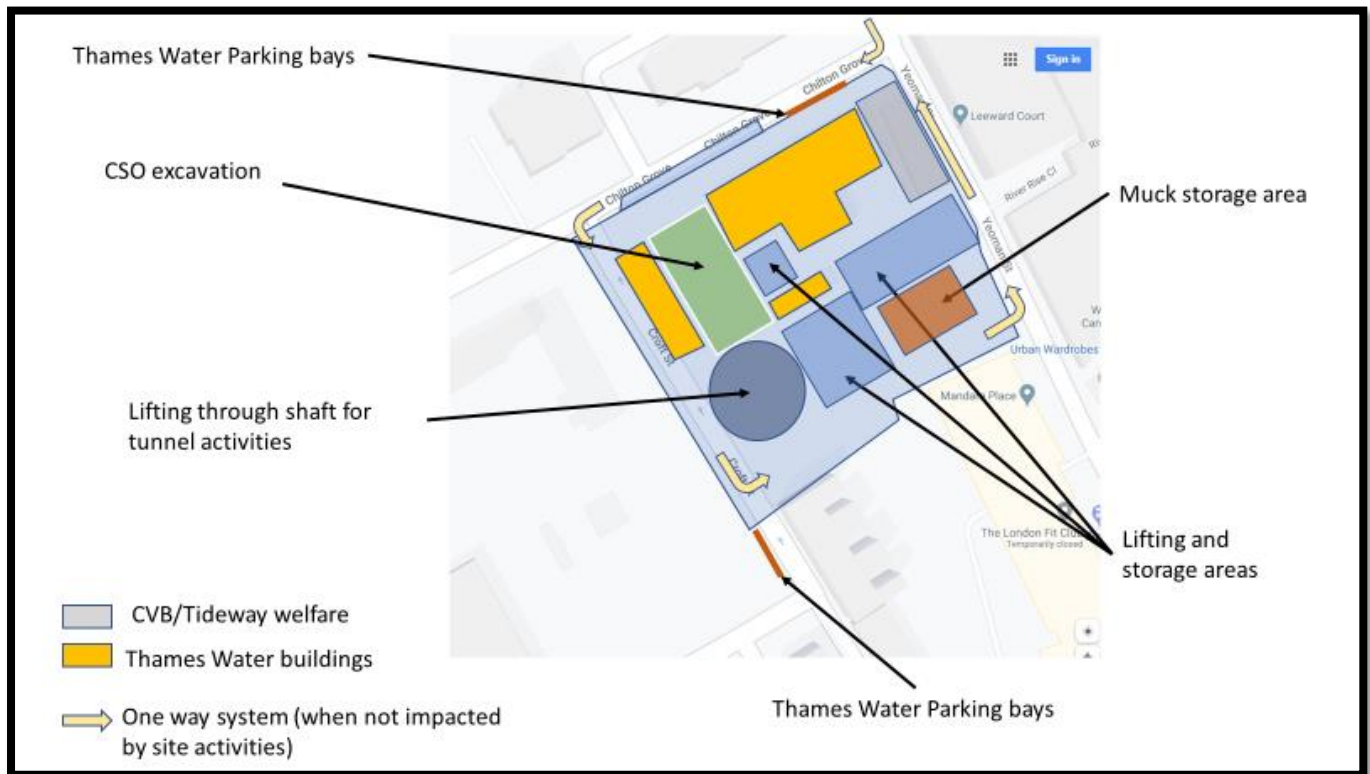
@TidewayLondon

Shaft and tunnel activities

From January, activities within the shaft will include the daily lifting of materials and equipment to allow work within the tunnel to continue.

Inside the tunnel, we are installing a secondary lining of concrete. This process started from our Greenwich Pumping Station site and is moving towards the bottom of Earl Pumping Station shaft before continuing on to Chambers Wharf in Bermondsey.

Map of the current site layout and our construction activities



We try our best to minimise disruption. If you have any concerns about the impact of our work, we may be able to offer you support and advice. Please contact the Tideway Helpdesk: helpdesk@tideway.london about the Independent Compensation Panel process.

Tideway can also provide information in other languages, or formats such as braille or large print. Please contact the Helpdesk.