

# INFORMATION SHEET



Tideway



## Tideway's work at Putney Embankment – coming to an end

Tideway's construction work at Putney is now substantially complete and the new riverside area created as part of the project will soon be open to the public. This information sheet explains what we have done, what happens next and invites you to our opening event for the new space.

### London's new super sewer

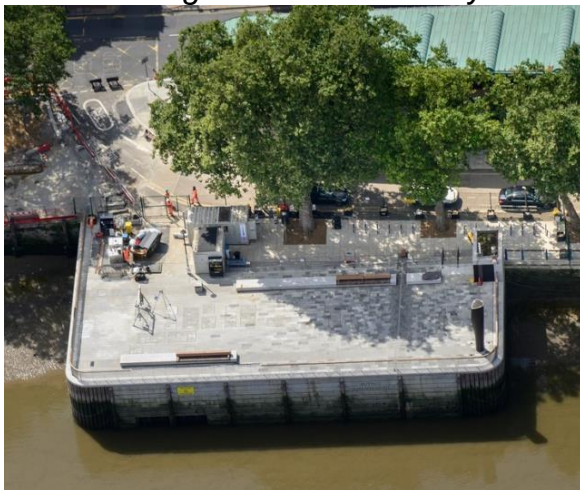
Our work at Putney is part the London super sewer project, a 25km tunnel under the Thames, designed to prevent sewage pollution of the river.

The completion of our work at Putney is an important milestone before the project 'goes live' in 2024. This is when the system will be switched on and will start to protect the Thames from sewage pollution for the first time. The tunnel is due to be fully operational in 2025, when it will prevent an estimated 95 per cent of sewage spills that currently overflow into the River Thames, improving the water quality for fish and other wildlife - and for people who use it for recreation and leisure.

At our Putney site we have:

- Created a new riverside space with artworks inspired by the River Thames including a new bronze marker for the start line of the University Boat Race.
- Excavated a 36m-deep shaft and built a connecting tunnel to intercept the Putney Bridge Combined Sewer Overflow (CSO), linking it to the main sewer tunnel beneath the Thames.
- Installed mechanical and electrical equipment to make the system run smoothly.

*An aerial image of the new Putney riverside space*



*The main tunnel beneath the Thames*



# INFORMATION SHEET



Tideway



## Opening event

On Friday 15 September we invite you to an event to mark the completion of the work and to experience the new riverside space. Tideway staff and some of the people involved in designing and creating the new space will be on hand to talk about the project. London Youth Rowing, environmental charity Thames21 and the RNLI will also be there running free activities including rowing taster sessions.

The event runs from 1.30pm to 3.30pm, drop in anytime!

## What happens next

Although construction is mostly complete, you may continue to see some Tideway staff working as we work to bring the super sewer into operation. There will also be occasional periods when we need to close part or all the area while we undertake testing work for the sewer.

## Keeping in touch

Our Helpdesk will remain open until 2025. If you have any questions, comments or feedback call us on 0800 030 8080 or email [helpdesk@tideway.london](mailto:helpdesk@tideway.london).

You can also find lots of information on our website [www.tideway.london](http://www.tideway.london) and social media channels @tidewaylondon. Use the QR code below to link to our Putney pages.

Look out for the final edition of our River Times magazine landing on doorsteps in the autumn.

Thank you once again for your patience, interest and support. We hope to see you on the afternoon of Friday 15 September!

The Tideway team

