

PUTNEY EMBANKMENT FORESHORE & BARN ELMS

Community Liaison Working Group - September 2023



Tideway



Agenda

1. Welcome & Housekeeping
2. Tideway project update – Emily Black
3. Putney Embankment Foreshore Update – John Clifton
4. Wandsworth Council - Waterman's Green update – Tim Addlesee
5. Barn Elms – John Clifton
6. Community engagement update – Emily Black
7. Any Other Business

PROJECT OVERVIEW



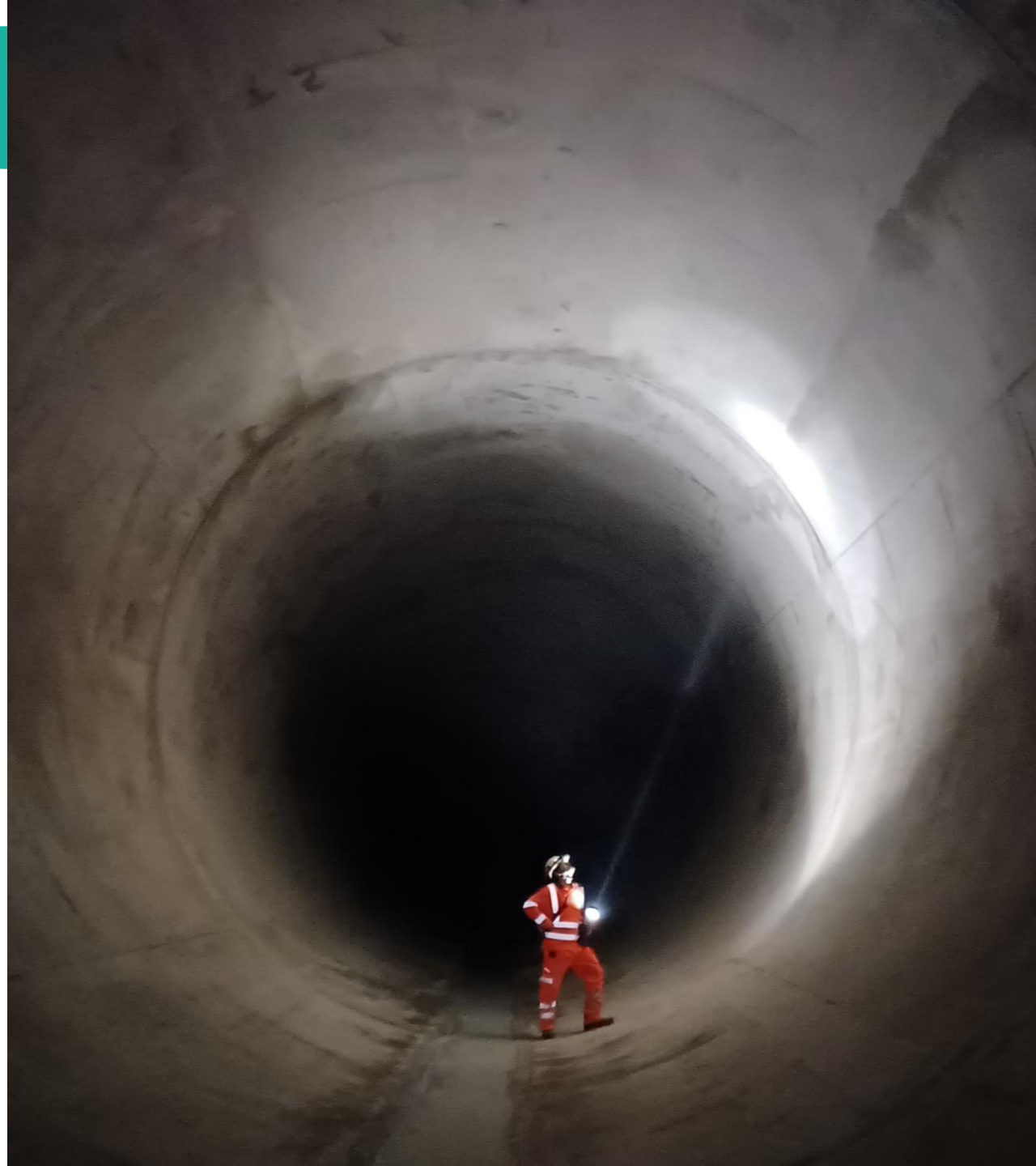
Tideway



 <p>BMB WEST</p> <ul style="list-style-type: none"> 1 Acton Storm Tanks 2 Hammersmith Pumping Station 3 Barn Elms 4 Putney Embankment Foreshore 5 Dormay Street 6 King George's Park 7 Carnwath Road Riverside 	 <p>FLO CENTRAL</p> <ul style="list-style-type: none"> 8 Falconbrook Pumping Station 9 Cremorne Wharf Depot 10 Chelsea Embankment Foreshore 11 Kirtling Street 12 Heathwall Pumping Station 13 Albert Embankment Foreshore 14 Victoria Embankment Foreshore 15 Blackfriars Bridge Foreshore 	 <p>CVB EAST</p> <ul style="list-style-type: none"> 17 Chambers Wharf 18 Earl Pumping Station 19 Deptford Church Street 20 Greenwich Pumping Station 21 King Edward Memorial Park Foreshore 23 Abbey Mills Pumping Station 	  <ul style="list-style-type: none"> 16 Shad Thames Pumping Station 22 Bokesbourne Street 24 Beckton Sewage Treatment Works <p>MAP KEY</p> <ul style="list-style-type: none"> ● Main tunnel drive tunnel site ● Main tunnel reception site ● CSO site ● Short connection tunnel drive site ● Long connection tunnel drive site System modifications Main tunnel ⋯ Connection Tunnels Lee Tunnel ◀▶ Proposed drive direction ● West works site ● Central works sites ● East works site
---	---	--	--

Tideway Programme highlights

- Construction is 90% complete
- Primary tunnelling is complete, tunnel secondary lining is due to complete September 2023
- All shafts are fully excavated and shaft lids are going on
- Architecture and landscape work is progressing across sites
- Start cleaning up the river from 2024 onwards
- Super sewer on track to be operational in 2025



**PUTNEY
EMBANKMENT
FORESHORE**

**John Clifton
Section Manager**

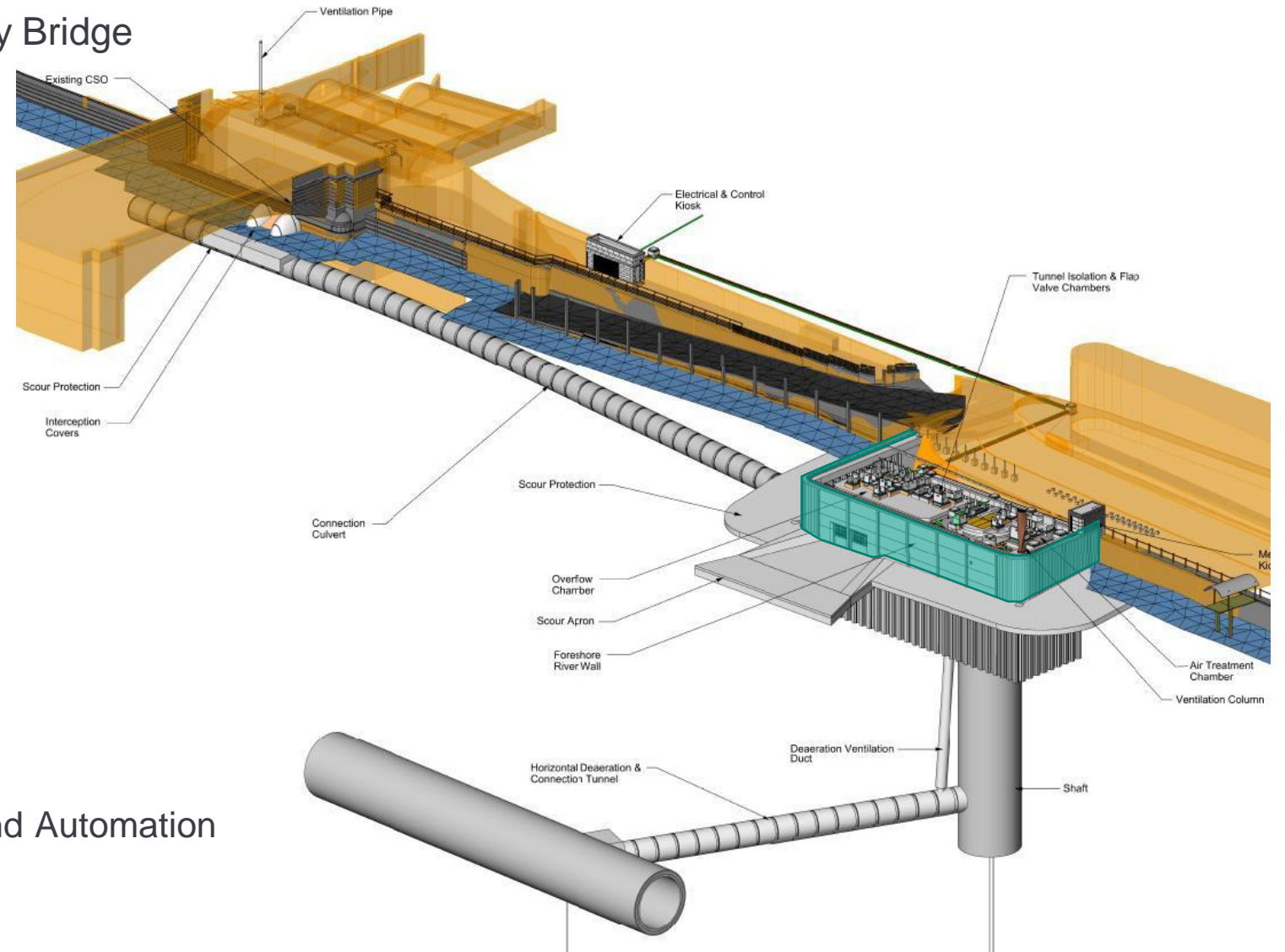
Putney Embankment Foreshore



Recent Construction Progress

Our milestones since last year:

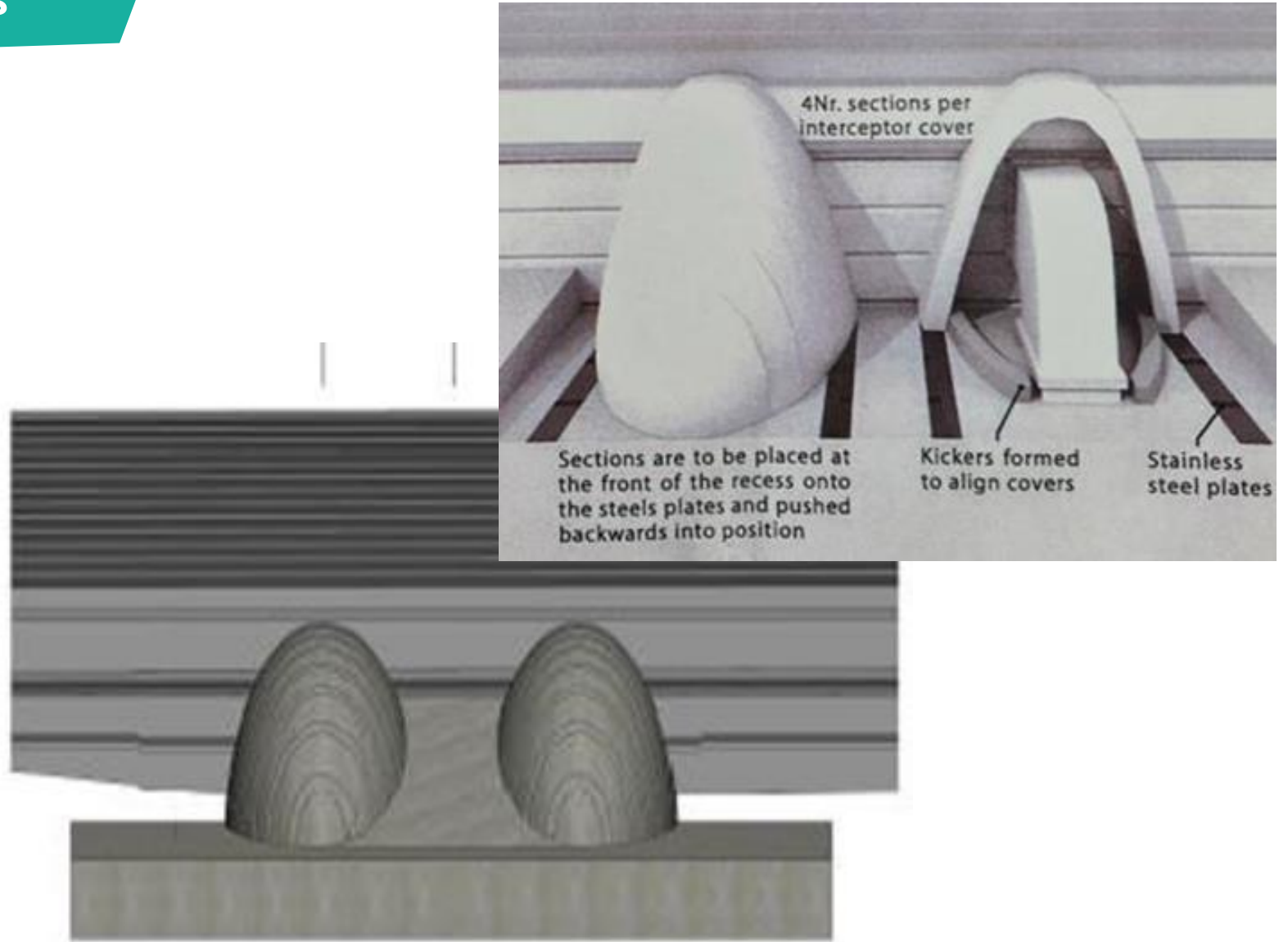
- Completed CSO ring beam under Putney Bridge
- Completed paving on foreshore structure
- Completed scour protection works
- Completed kiosk cladding and MEICA* fitout to bring power & communications to site
- Completed MEICA* site acceptance testing
- Installed the signature Tideway bronze vent column, bronze oars artworks
- Demobilising from site
- Removed the temporary slipway and reinstated Rowing Eight slip.



*Mechanical, Electrical, Instrumentation, Control and Automation

Continued and upcoming works

- Complete installation of bronze start line for University Boat Race
- Architectural and landscape maintenance
- CSO connection under Putney Bridge
- MEICA* testing – system commissioning and maintenance



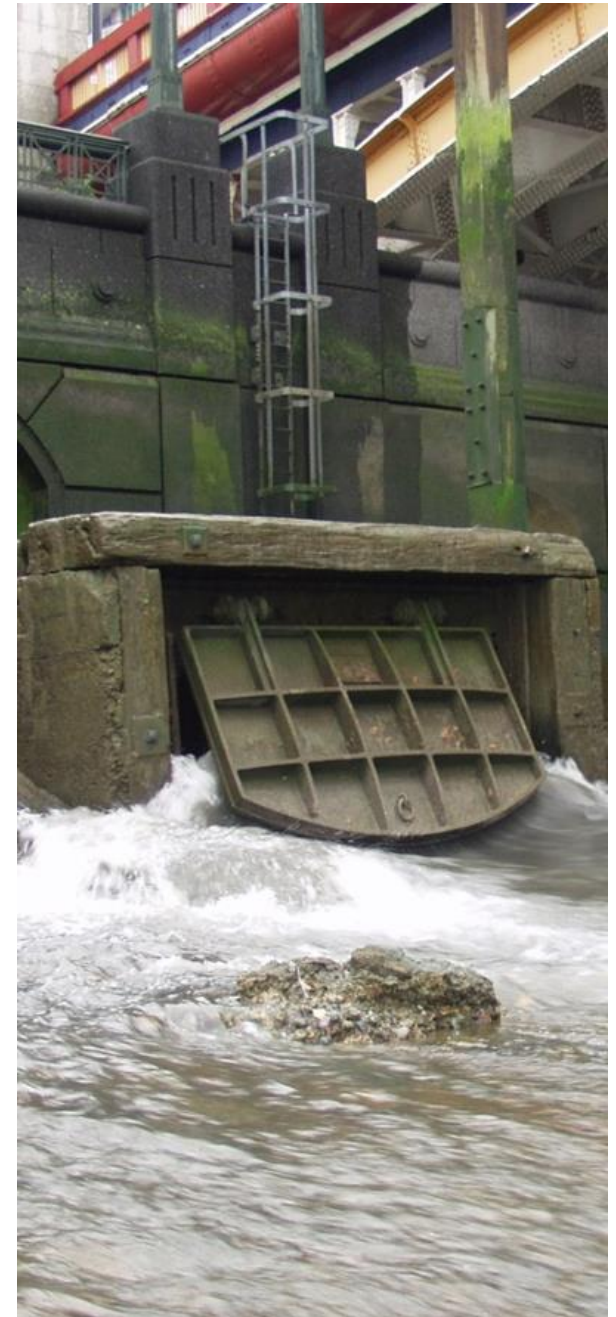
*Mechanical, Electrical, Instrumentation, Control, Automation

Current Programme

Key dates Putney

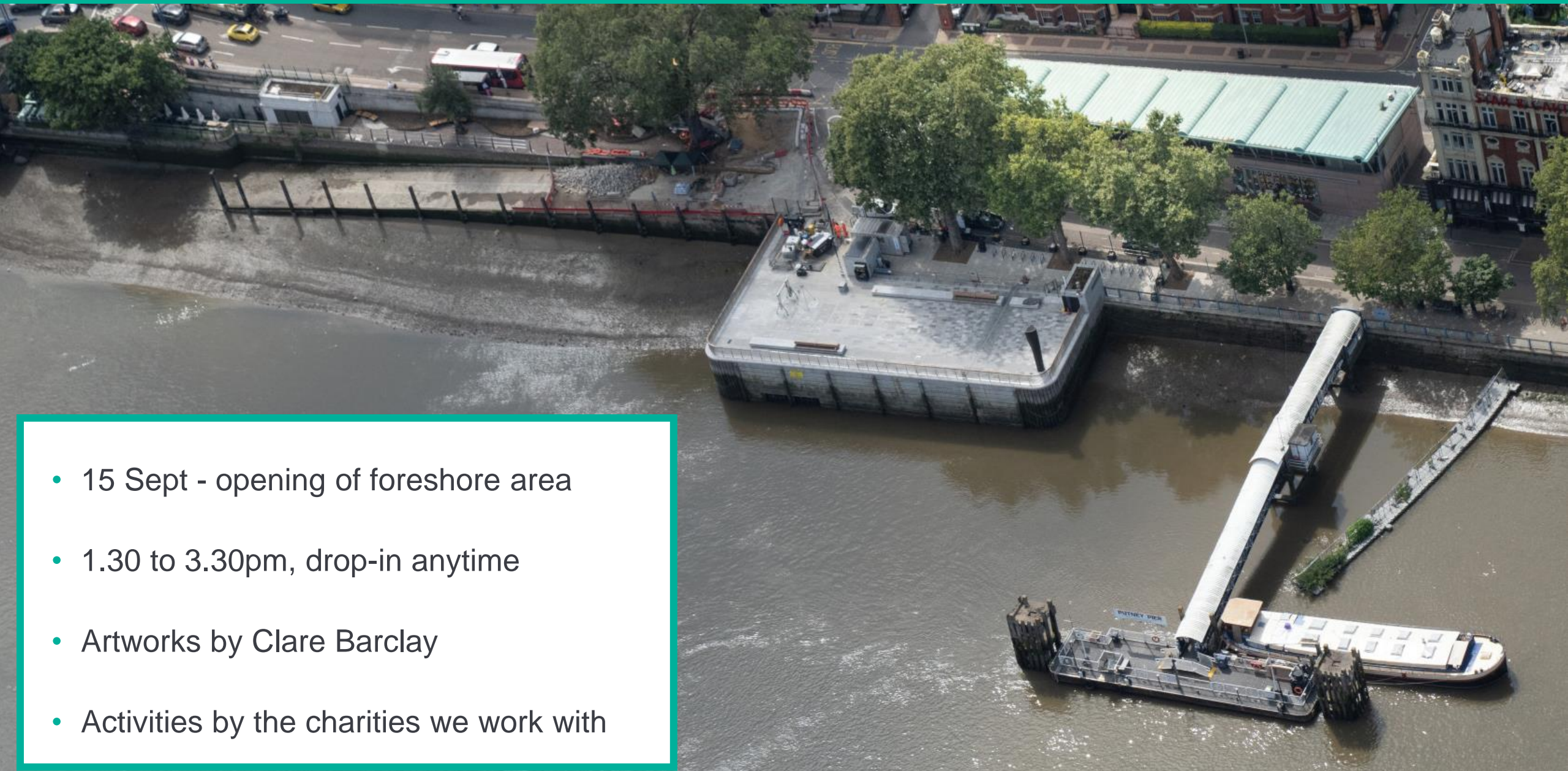
- Foreshore structure open to the public – 15 September 2023
- CSO* trial fit under Putney Bridge – October - November 2023
- CSO* connection under Putney Bridge – May 2024
- System commissioning – June 2024 to 2025
- System testing and commissioning continues until 2025, though minimal on-site activity

*Combined Sewer Overflow



PUTNEY EMBANKMENT OPENING

- 15 Sept - opening of foreshore area
- 1.30 to 3.30pm, drop-in anytime
- Artworks by Clare Barclay
- Activities by the charities we work with

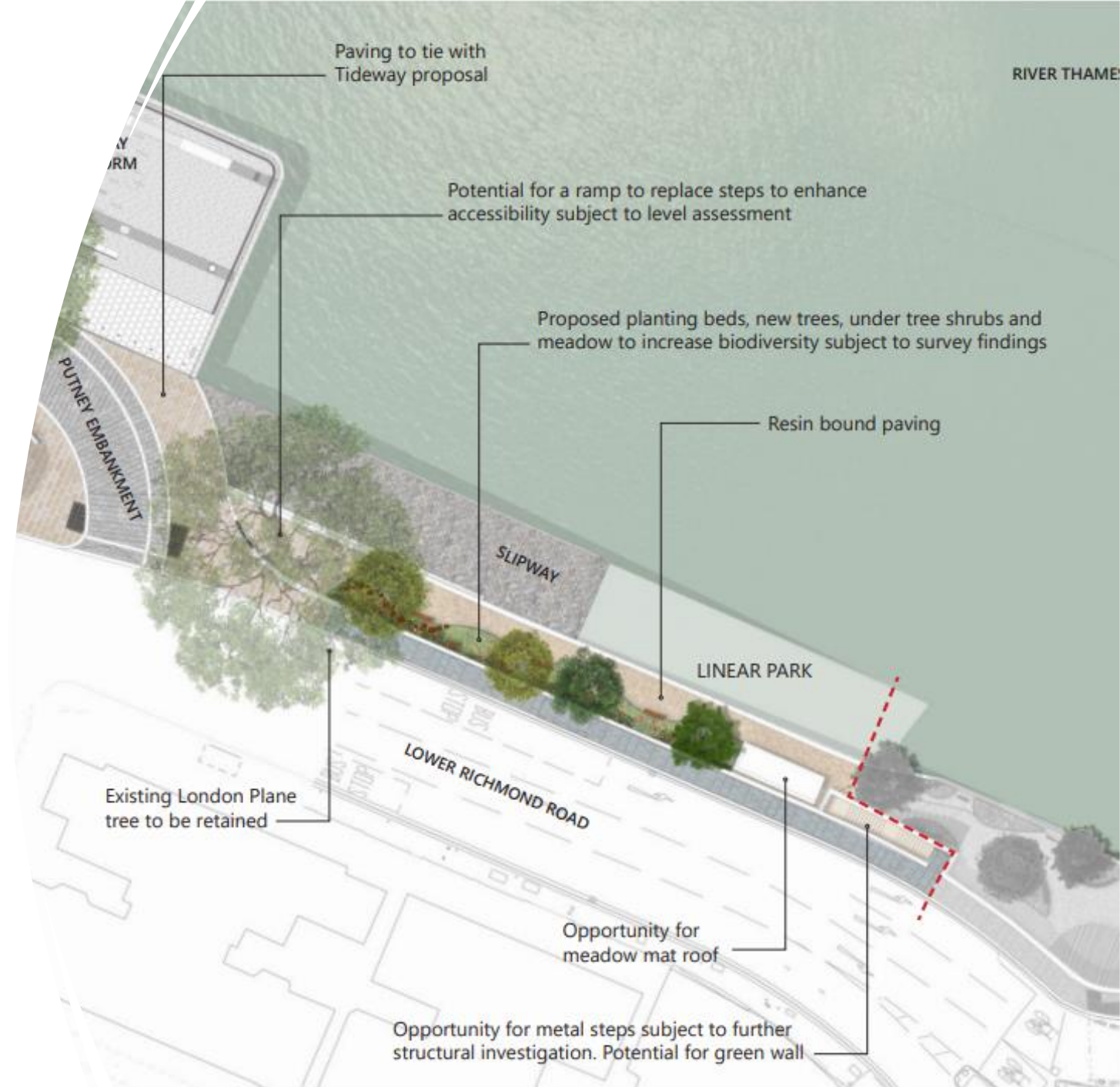


**Wandsworth
Council –
Waterman's Green**

**Tim Addlesee,
Wandsworth Council**

Waterman's Green

- Positive outcome at public consultation in September and committee in November 2023
- Work currently underway
- Improved link from the High Street
- Previously under used green space
- Level access
- New planting, seating, paving and way finding
- Repaving of the junction with the embankment

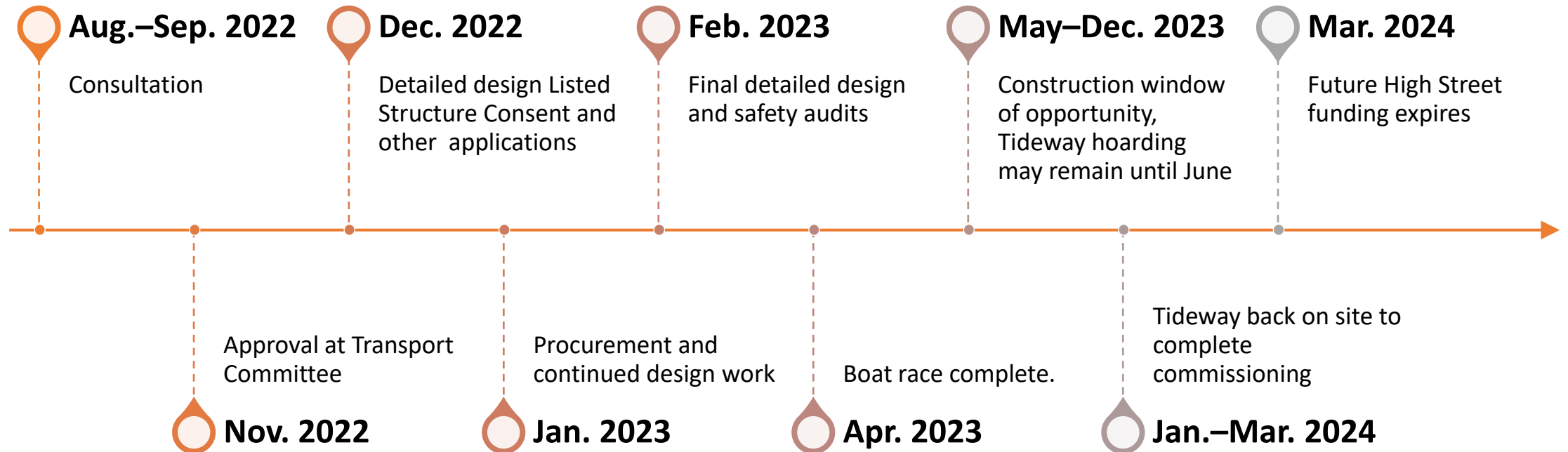


Construction progress

- Retaining wall extended and slipway relaid
- Majority of kerb lines installed and entry treatment will be next
- Planting to take place in cooler Autumn weather
- Scheduled completion December 2023



Watermans Green – project timeline



BARN ELMS

John Clifton
Section Manager

Barn Elms

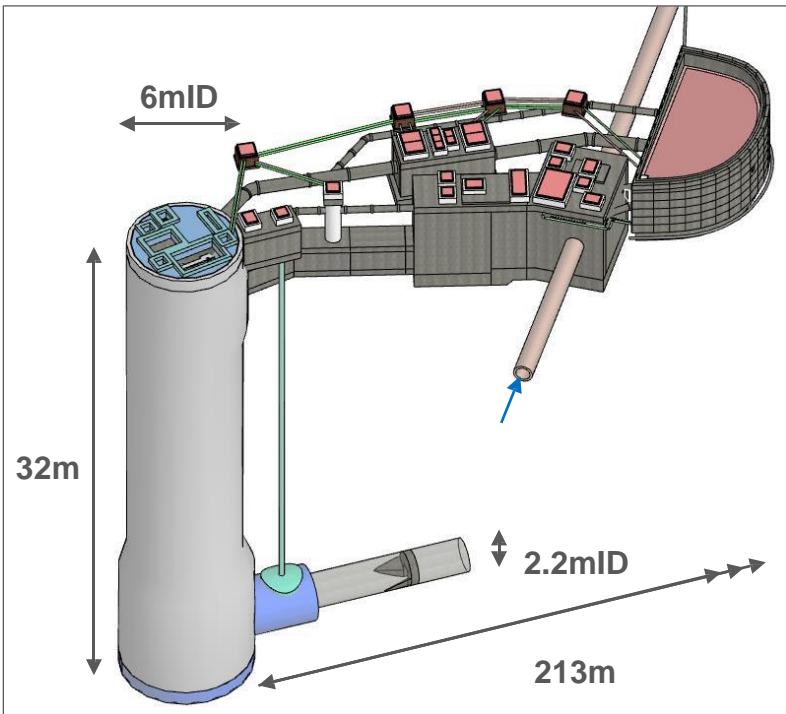
The Barn Elms main work site is in the southeastern corner of the Barn Elms Schools Sports Centre site.

The site will be used to intercept the West Putney Storm Relief combined sewer overflow.

As part of the works, we replaced the changing rooms for the sports centre.



Barn Elms Overview



Recent Construction Progress

Our milestones since last year:

Shaft -

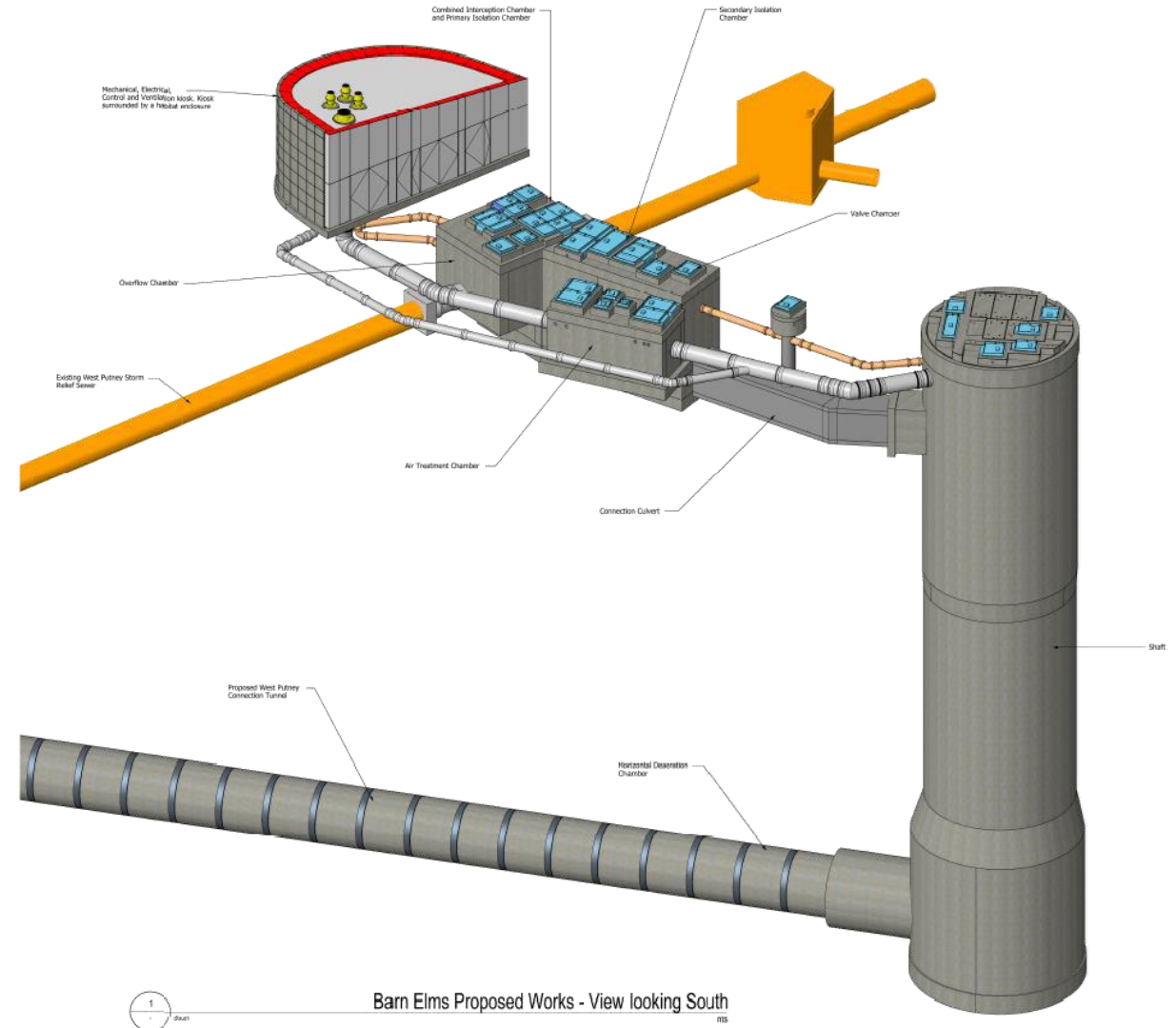
- Completed the shaft secondary lining
- Completed the shaft internal structures
- Installed the shaft cover slab and access covers

Surface -

- Completed all sub-surfaces works
- All structures have been backfilled
- All access covers installed
- Commenced landscaping works
- Removed hoarding

Kiosk -

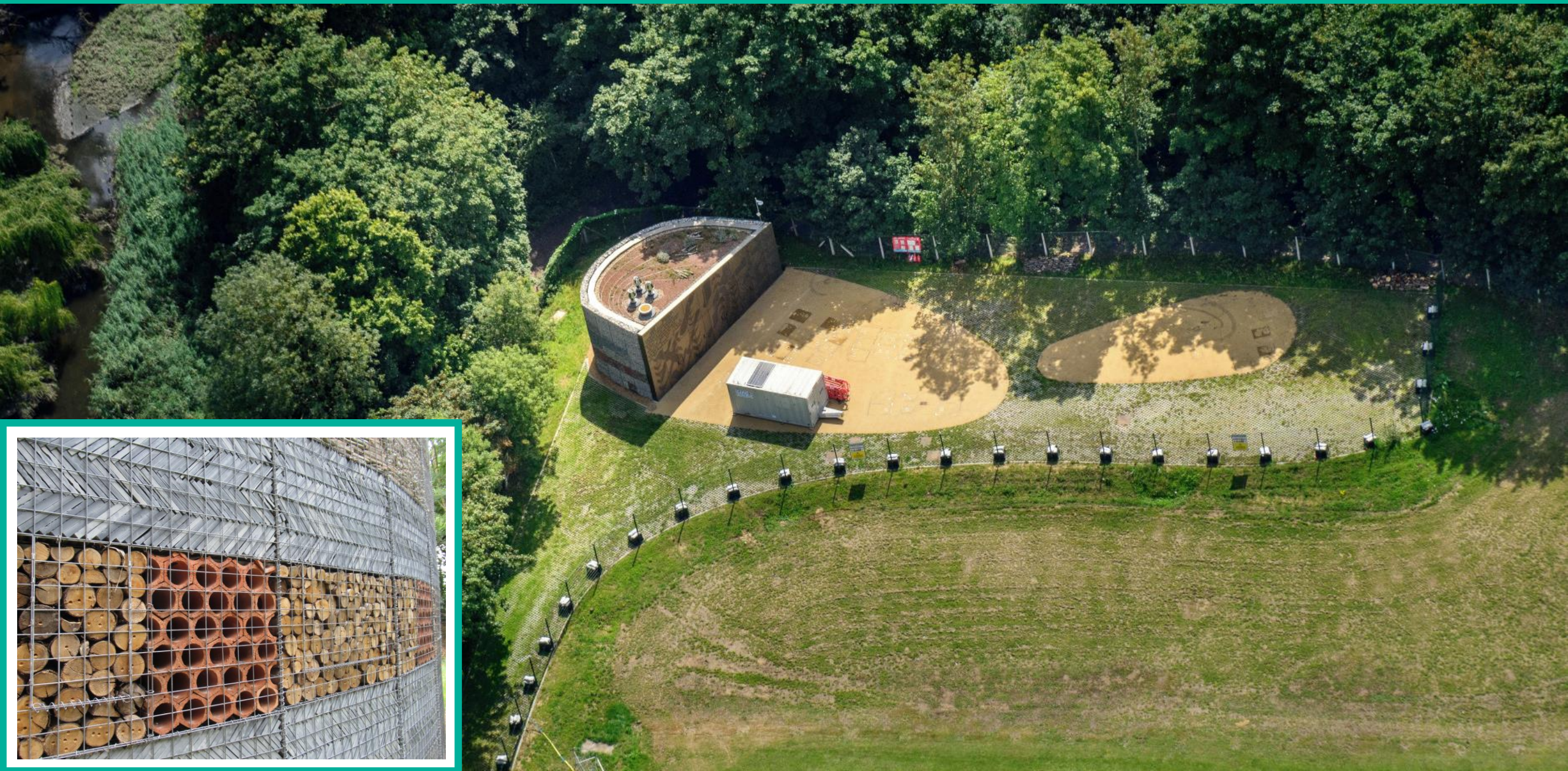
- Completed the brown roof
- Installed all electrical panels
- Vent pipes and dampers installed



What's next? Commissioning.



Barn Elms - bug hotel and artwork



COMMUNITY ENGAGEMENT

Emily Black
Communications Manager

Community Engagement

- 12 noise complaints received
 - - 8 – Putney Embankment Foreshore
 - - 4 – Barn Elms
- 18 general enquiries have also been received for both sites including topics such as: the CLWG meeting, tunnel route, property, and the project in general



Tideway

Call: 08000 30 80 80

Email: helpdesk@tideway.london

Write to: Freepost TIDEWAY

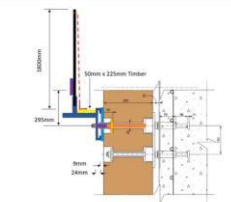
Who do I go to for advice?

Independent Advisory Service (IAS) Helpline for independent advice:

- 0800 917 8845 or info@tidewayias.co.uk
- For personal assistance and advice contact our Helpdesk.
 - Helpdesk: 08000 30 80 80
 - helpdesk@tideway.london


Community Engagement

- Our community support activities are continuing
- 595 volunteering hours undertaken in 2021 - including support for STEM activities and local community groups
- Over £2,000 raised for Breast Cancer Care
- Support for 26 work placement students
- Please contact us if you are aware of an opportunity or community group that we could possibly help

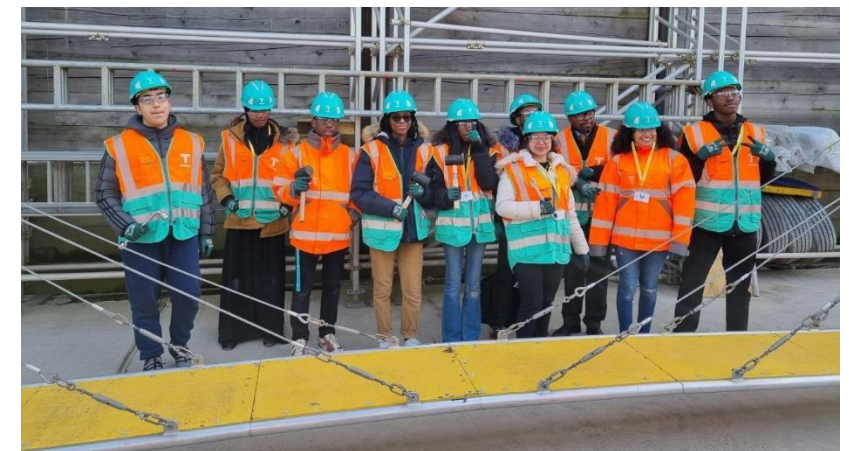


Foreshore Structure Edge Protection
Design Challenges

- Fixings – finding a way of fixing the edge protection system onto the existing structure
- Span between fenders – the span between fenders is almost 5m, the maximum allowed span between supports is 3m
- Rigidity – ensuring that the maximum deflections in the system are below 50mm (as required by British standards)
- Obtaining CAT II design approval – far more complex design than I had previously worked with



RC MR
DG DB
KL ML
HM SM
RJ



How To Stay Up To Date

Follow us on social media: **@TidewayLondon**



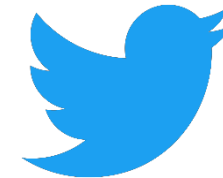
en-gb.facebook.com/TidewayLondon/



www.instagram.com/tidewaylondon/



www.linkedin.com/company/tideway-london/



twitter.com/TidewayLondon



QUESTIONS



Tideway

RECONNECTING LONDON WITH THE RIVER THAMES

#SuperSewer

www.tideway.london