

# INFORMATION SHEET

2023-TDWAY- GREPS-150-ZZ-CO-700030  
November 2023



## GREENWICH PUMPING STATION

### WORK UPDATE

Following the site construction update we shared last month, from next week (Monday 20 November) we will be taking down the acoustic enclosure. This is the large, grey building that sits adjacent to Norman Road. The building has allowed us to work 24 hours a day to construct the new tunnel below ground.

The first week of dismantling the structure will be during day shifts only, from 8am to 6pm, Monday to Friday.

From the following week, starting 27 November, the remainder of the dismantling works will be at night, Monday to Friday, from 10pm to 7am. This is due to restrictions, for safety reasons, on any work taking place near the DLR viaduct when trains are running.

To minimise noise, we will be dismantling the structure rather than undertaking demolition works. This may result in a low to medium level of noise.

We will, as always, be working within noise limits agreed with the council. Damping down will be used to reduce any dust. The work will continue into February.

**If you feel you may be affected by any of Tideway's work, including these activities, contact the Helpdesk - [helpdesk@tideway.london](mailto:helpdesk@tideway.london) - to discuss support available through the Independent Compensation Panel process.**

## KEY INFO

### WORKING HOURS ONSITE

- Normal: Monday to Friday: 8am to 6pm, Saturday 8am to 1pm
- Extended: Monday to Friday: 6pm to 10pm, Saturday 1pm to 5pm (in the CSO) Night: 10pm to 7am
- Up to one hour start up and shut down periods before and after these times

### WHAT TO EXPECT

- Increase in noisier activities
- Increase in night works

### WHAT WE WILL DO

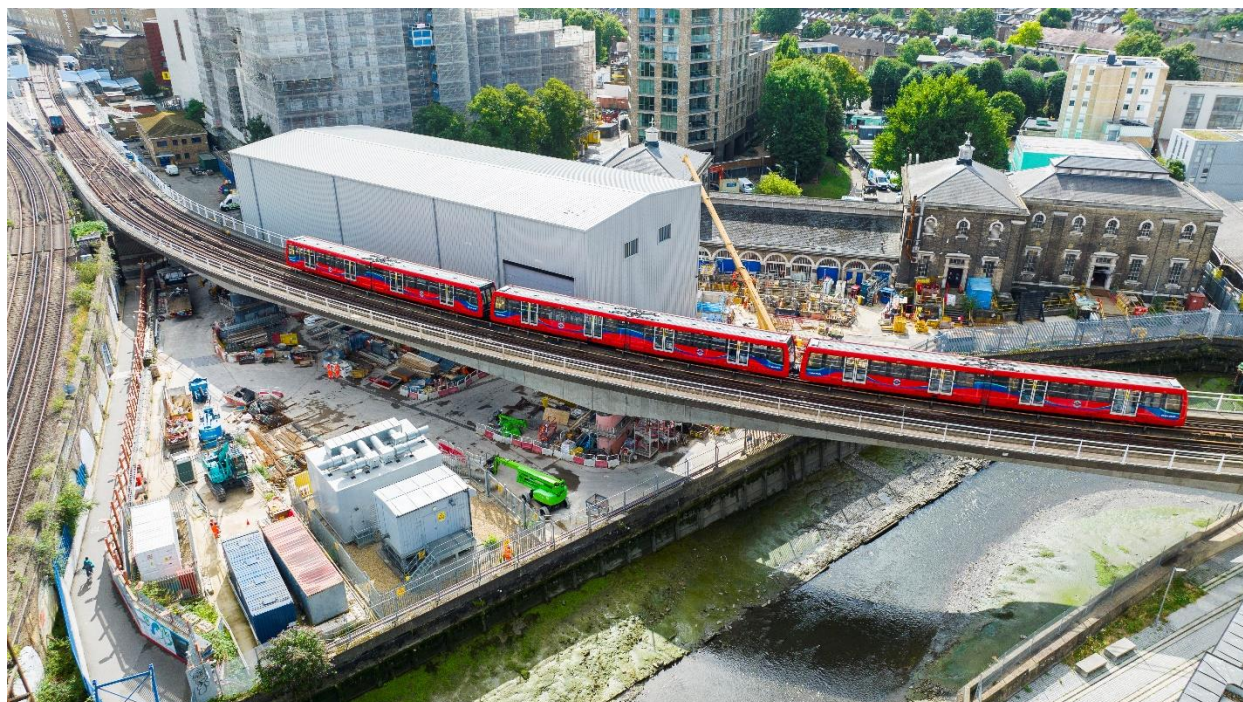
- Continue to use best practice
- Monitor noise & dust levels
- Hold Community Liaison Working Group meetings  
Contact the Helpdesk to join us at the next one

**24 HOUR HELPDESK 08000 30 80 80**

[helpdesk@tideway.london](mailto:helpdesk@tideway.london) | Freepost TIDEWAY  
[www.tideway.london](http://www.tideway.london)



The site team will continue to try our best to minimise disruption, but we understand some people are affected more than others by construction work such as noise and vibration.



Thank you to those that attended the Community Liaison Working Group and the Creekside Centre for hosting us, earlier this month. The presentation slides will be emailed soon to all those on the site distribution list.

We will be sending out email updates every two weeks or so, to summarise planned work we have agreed with the DLR.

<span style="background-color: green; color: white;"> </span>	<b>Day Works</b>
Mon-Fri: 7am - 7pm / Sat: 8am - 3pm	
<span style="background-color: blue; color: white;"> </span>	<b>Night Works</b>
Mon-Sun: 10am - 7am	

### November 2023

Mon	Tue	Wed	Thu	Fri	Sat	Sun
30	31	1	2	3	4	5
6	7	8	9	10	11	12
13	14	15	16	17	18	19
20	21	22	23	24	25	26
27	28	29	30	1	2	3

<span style="background-color: gray; color: white;"> </span>	<b>No Works</b>
<span style="background-color: yellow; color: black;"> </span>	<b>Day / Night Works to be confirmed</b>

### December 2023

Mon	Tue	Wed	Thu	Fri	Sat	Sun
27	28	29	30	1	2	3
4	5	6	7	8	9	10
11	12	13	14	15	16	17
18	19	20	21	22	23	24
25	26	27	28	29	30	31

We would like to thank you for your patience and co-operation while we continue construction for the Thames Tideway Tunnel at the Greenwich Pumping Station site.

The new super sewer is expected to be operational in the latter half of 2025, working to clean up the River Thames for the benefit of many future generations of Londoners.

We are happy to provide information in other languages and formats such as braille or large print. Please contact the Tideway Helpdesk on 08000 308080.