

WEEKLY SITE UPDATE



8 December 2023

THIS WEEK

The site team safely installed all five primary beams that start to cover the top of the shaft (see photograph below). The largest of these beams weighed 175 tonnes! Following this work we then started dismantling the temporary lifting gantry that was used.

Also inside the acoustic enclosure, we continued the removal of the aggregate bay that was used during concrete batching which involved some breaking work. We progressed with the shaft topping slab works with preparation for the smaller precast slabs that be the next stage in covering the shaft.

Specialist repairs are being carried out on the acoustic enclosure doors as they have a mechanical issue which means they are unable to fully close. We apologise for any inconvenience whilst these doors are repaired.

On the western side of the site, we continued with the capping beam construction, by installing steel reinforcement, carrying out periodic breaking of concrete and cropping piles. The capping beam will connect the new permanent river wall to the existing river wall. On the eastern side of the site, capping beam and drainage works with periodic breaking continued.

On the east of site we are installing the retaining walls for the electrical and control kiosk. This is the structure that will house the mechanical and electrical equipment that is needed to make sure the sewer systems work.

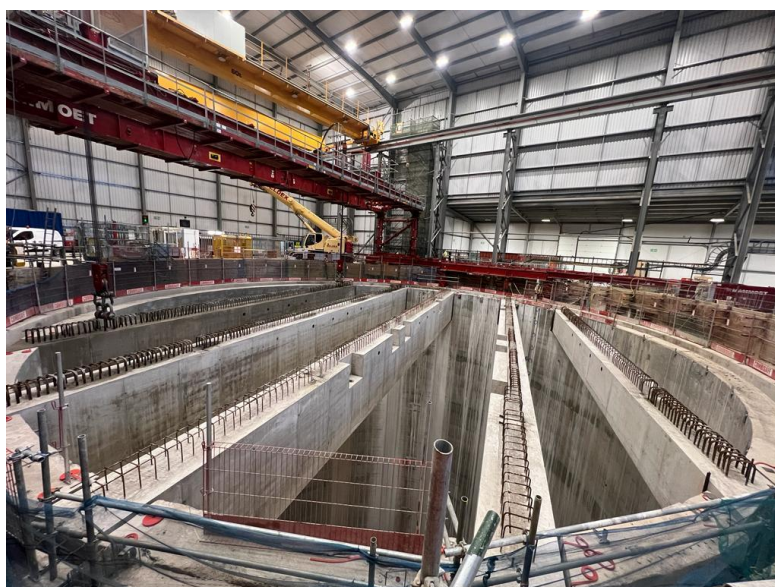


Image above shows the precast beams installed over the shaft inside the acoustic enclosure.

THIS WEEKEND

We will be demobilising the temporary lifting gantry crane and transporting it off site on Sunday. We will also be preparing for the installation of the secondary precast beams for the top of the shaft. These are the smaller pieces that help make up the overall cover slab.

NEXT WEEK

We will continue installing the retaining walls of the control kiosk and will be receiving the delivery of the secondary precast shaft cover slab beams.

Inside the acoustic enclosure we will continue installing the smaller precast sections, as well as removing the aggregate bay which will involve some periodic breaking.

We will be cropping piles with periodic breaking for the western side of the site for the river wall capping beam and installing steel reinforcement.

On the eastern the side of site drainage works will continue with some concrete breaking, and we will be installing drainage pipes. We will also continue with the capping beam construction.

The team will undertake any concrete breaking work during the day between 9am and 5pm. We continue to use mitigation measures such as noise barriers around any breaking work, plus tools and equipment designed to reduce impacts. We will continue to monitor noise and vibration levels. Please accept our apologies for any disruption as we continue with these works.

WORKING HOURS

Due to the current mechanical issues with the acoustic enclosure doors, the site team have reduced usual working operations. These would normally be 24 hours a day within the acoustic enclosure with the doors closed from 6pm to 7am. We are also adjusting some interior lighting, where safely possible, while the doors are unable to fully close.

The table below outlines the working hours that will be used for the movement of materials onsite outside of the noise enclosure.

Options in preferred order	Type	Days	Times
Option 1	Standard hours	Monday to Friday Saturday	8am – 6pm 8am – 1pm
Option 2	Extended hours	Monday to Friday Saturday	6pm – 10pm 1pm – 5pm
Option 3	Continuous hours*	Saturday	5pm – 10pm
Option 4	Continuous hours*	Sunday	10am – 6pm
Option 5	Continuous hours*	Sunday	8am – 10pm

**Only required when absolutely necessary - any operations would be intermittent*

OTHER NEWS – Archaeology update and a festive mince pie!

Next week, we welcome residents to join the team and Museum of London Archaeology (MOLA) staff to find out more about the latest archaeological finds from the Chambers Wharf site and some local history.

Location: Chambers Wharf site offices, 19 Chambers Street, SE16 4XR on 14 December, 6.30pm - 7.30pm.



Space in the room is limited, so please ensure you email us at GetInvolved@tideway.london to reserve a spot. Unfortunately due to our security requirements, only those that have pre-registered by Wednesday lunchtime will be able to attend.

OTHER NEWS – Section 106 Community Enhancement Fund

This week our office hosted the Community Enhancement Fund Panel on behalf of Southwark Council. This is a Dragon's Den style format where local residents, groups and businesses can bid for a portion of an original £1million fund that was set aside to improve and enhance the area around Chambers Wharf.

The panel saw some great proposals and will now vote on these. We hope to share the news of any successful bids with you in the near future. Good luck to everyone who submitted a proposal!

Further information on the Fund and details about the application process is available on Southwark Council's [webpage](#). The next round of submissions close on the 29 February.

If you have any questions, wish to apply for the next round of voting, or are interested in joining the panel of local representatives, please email Jacqueline Christie, at Southwark council: Community.Engagement@southwark.gov.uk.

INDEPENDENT COMPENSATION PANEL

If you feel affected by our work, please continue to contact the Helpdesk, who can advise you on support available through the Independent Compensation Panel. Typical mitigation could include the installation of secondary glazing, blackout blinds or noise cancelling headphones.

If you would like to make an application to the Independent Compensation Panel (ICP), please contact the Helpdesk at helpdesk@tideway.london to request a copy of the form.

CONTACT DETAILS

If you have any questions, contact the Tideway Helpdesk on 08000 30 80 80 or at helpdesk@tideway.london.

Jacqueline Christie, Consultation and Involvement Officer for Southwark Council, can be contacted for Tideway enquiries at: Community.Engagement@southwark.gov.uk

The Southwark Council Environmental Health team can also be contacted directly if you have concerns about our work - environment@southwark.gov.uk

We will provide this lookahead every Friday. It is also available on our [website](#).