

**THE THAMES WATER UTILITIES LIMITED (THAMES TIDEWAY TUNNEL) ORDER 2014 (AS AMENDED)<sup>1</sup> SI 2014 NO.2384**

**GENERAL VESTING DECLARATION No. 38**

This GENERAL VESTING DECLARATION NO. 38 is made the 12 day of June 2024 by Thames Water Utilities Limited ("Thames Water").

**WHEREAS:**

- 1 On 3 September 2014 an order entitled The Thames Water Utilities Limited (Thames Tideway Tunnel) Order 2014 (as amended) SI 2014 No.2384 ("the Order") was made (and came into force on 24 September 2014) by the Secretaries of State for Communities and Local Government and Environment, Food and Rural Affairs under the powers conferred on them by the Planning Act 2008 authorising Thames Water to acquire the land specified in the Schedule hereto.
- 2 Notice of the making/confirmation of the Order was first published in accordance with section 134 of the Planning Act 2008 on 19 September 2014.
- 3 Preliminary notice of the intention to make a general vesting declaration in respect of any of the land described in the Schedule hereto was first published on **24 November 2023** in accordance with section 3 of the Compulsory Purchase (Vesting Declarations) Act 1981 ("the 1981 Act")<sup>2</sup>, as modified by Article 34 of the Order.
- 4 That preliminary notice included the particulars specified in section 3(3) of the 1981 Act, as modified by Article 34 of the Order.
- 5 The notice referred to in (4) above specified the period of two months beginning with the date of its first publication as the period before the end of which this general vesting declaration could not be executed.

NOW THIS DEED WITNESSETH that, in exercise of the powers conferred on them by the Order and section 4 of the 1981 Act, Thames Water hereby declare:

The land described in the Schedule hereto being part of the land authorised to be acquired by the Order and more particularly delineated on the plans annexed hereto, together with the right to enter upon and take possession of the land shall vest in the Thames Water as from the end of the period of 28 days from the date on which the service of notices required by section 6 of the 1981 Act and in accordance with Article 34 of the Order is completed.

---

<sup>1</sup> The Order has been amended by (1) SI 2015/723 issued on 17 March 2015; (2) SI 2017/659 issued on 16 May 2017; (3) SI 2018/1262 issued 29 November 2018; (4) Notices of Variation Nos.1 and 2 Issued on 17 March 2015 and 17 August 2017 respectively in respect of the Deemed Marine Licence; (5) SI 2020/268 issued on 10 March 2020; and (6) SI 2020/862 issued on 13 August 2020.

<sup>2</sup> The Version of the 1981 Act is the version that applied immediately prior to amendments brought in by the Housing and Planning Bill on 13 October 2015 and as modified by the Order.

## SCHEDULE

### The land

<u>Reference number on attached notice plan</u>	<u>Description of the land</u>	<u>Associated Book of Reference plot number</u>	<u>Title Number</u>
CHAWF/2004	463.1 square metres of a stratum of subsoil below hardstanding (Chambers Wharf) where the upper surface of the stratum of the sub-soil is at a level equivalent to -39.2m (minus thirty nine point two metres) OD (Ordnance Datum) or thereabout at its western boundary and -39.1m (minus thirty nine point one metres) OD (Ordnance Datum) or thereabouts at its eastern boundary, and the lower surface of the stratum of the sub-soil is at a level equivalent to -62.8m (minus sixty two point eight metres) OD (Ordnance Datum) or thereabout at its western boundary and -62.8m (minus sixty two point eight metres) OD (Ordnance Datum) or thereabouts at its eastern boundary.	20 - London Borough of Southwark	SGL246760
CHAWF/2015	246.2 square metres of a stratum of subsoil below hardstanding (Chambers Wharf) where the upper surface of the stratum of the sub-soil is at a level equivalent to -38.7m (minus thirty eight point seven metres) OD (Ordnance Datum) or thereabout at its western boundary and -39.3m (minus thirty nine point three metres) OD (Ordnance Datum) or thereabouts at its eastern boundary, and the lower surface of the stratum of the sub-soil is at a level equivalent to -59.7m (minus fifty nine point seven metres) OD (Ordnance Datum) or thereabout at its western boundary and -59.7m (minus fifty nine point seven metres) OD (Ordnance Datum) or thereabouts at its eastern boundary.	20 - London Borough of Southwark	SGL246760
MNTLD/2001	0.2 square metres of a stratum of subsoil below garden (11, Fountain Green Square) where the upper surface of the stratum of the sub-soil is at a level equivalent to -38.7m (minus thirty eight point seven metres) OD (Ordnance Datum) or thereabout at its western boundary and -38.7m (minus thirty eight point seven metres) OD (Ordnance Datum) or thereabouts at its eastern boundary, and the lower surface of the stratum of the sub-soil is at a level equivalent to -59.6m (minus fifty nine point six metres) OD (Ordnance Datum) or thereabout at its western boundary and -59.6m (minus fifty nine point six metres) OD (Ordnance Datum) or thereabouts at its eastern boundary.	33 - London Borough of Southwark	TGL89759
MNTLD/2002	77.5 square metres of a stratum of subsoil below hardstanding (Fountain Green Square) where the upper surface of the stratum of the sub-soil is at a level equivalent to -38.7m (minus thirty eight point seven metres) OD (Ordnance Datum) or thereabout at its western boundary and -38.7m (minus thirty eight point seven metres) OD (Ordnance Datum) or thereabouts at its eastern boundary, and the lower surface of the stratum of the sub-soil is at a level equivalent to -59.6m (minus fifty nine point six metres) OD (Ordnance Datum) or thereabout at its western boundary and -59.7m (minus fifty nine point seven metres) OD (Ordnance Datum) or thereabouts at its eastern boundary.	31 - London Borough of Southwark	LN42853
MNTLD/2004	19 square metres of a stratum of subsoil below garden (12, Fountain Green Square) where the upper surface of the stratum of the sub-soil is at a level equivalent to -38.7m (minus thirty eight point seven metres) OD (Ordnance Datum) or thereabout at its western boundary and -38.7m (minus thirty eight point seven metres) OD (Ordnance Datum) or thereabouts at its eastern boundary, and the lower surface of the stratum of the sub-soil is at a level equivalent to -59.7m (minus fifty nine point seven metres) OD (Ordnance Datum) or thereabout at its western boundary and -59.7m (minus fifty nine point seven metres) OD (Ordnance Datum) or thereabouts at its eastern boundary.	32 - London Borough of Southwark	TGL89759

MNTLD/2005	29 square metres of a stratum of subsoil below flats (12, 13 and 14, Fountain Green Square) where the upper surface of the stratum of the sub-soil is at a level equivalent to -38.7m (minus thirty eight point seven metres) OD (Ordnance Datum) or thereabout at its western boundary and -38.7m (minus thirty eight point seven metres) OD (Ordnance Datum) or thereabouts at its eastern boundary, and the lower surface of the stratum of the sub-soil is at a level equivalent to -59.7m (minus fifty nine point seven metres) OD (Ordnance Datum) or thereabout at its western boundary and -59.7m (minus fifty nine point seven metres) OD (Ordnance Datum) or thereabouts at its eastern boundary.	35 - London Borough of Southwark	TGL89759
MNTLD/2006	1.7 square metres of a stratum of subsoil below hardstanding (Fountain Green Square) where the upper surface of the stratum of the sub-soil is at a level equivalent to -38.7m (minus thirty eight point seven metres) OD (Ordnance Datum) or thereabout at its western boundary and -38.8m (minus thirty eight point eight metres) OD (Ordnance Datum) or thereabouts at its eastern boundary, and the lower surface of the stratum of the sub-soil is at a level equivalent to -59.7m (minus fifty nine point seven metres) OD (Ordnance Datum) or thereabout at its western boundary and -59.7m (minus fifty nine point seven metres) OD (Ordnance Datum) or thereabouts at its eastern boundary.	36 - London Borough of Southwark	TGL89759
MNTLD/2007	174.6 square metres of a stratum of subsoil below hardstanding (Fountain Green Square) where the upper surface of the stratum of the sub-soil is at a level equivalent to -38.7m (minus thirty eight point seven metres) OD (Ordnance Datum) or thereabout at its western boundary and -38.8m (minus thirty eight point eight metres) OD (Ordnance Datum) or thereabouts at its eastern boundary, and the lower surface of the stratum of the sub-soil is at a level equivalent to -60m (minus sixty metres) OD (Ordnance Datum) or thereabout at its western boundary and -59.7m (minus fifty nine point seven metres) OD (Ordnance Datum) or thereabouts at its eastern boundary.	37 - London Borough of Southwark	LN42853
MNTLD/2035	4.9 square metres of a stratum of subsoil below hardstanding and grassed area (Sun Wharf) where the upper surface of the stratum of the sub-soil is at a level equivalent to -41.4m (minus forty one point four metres) OD (Ordnance Datum) or thereabout at its western boundary and -41.4m (minus forty one point four metres) OD (Ordnance Datum) or thereabouts at its eastern boundary, and the lower surface of the stratum of the sub-soil is at a level equivalent to -62.3m (minus sixty two point three metres) OD (Ordnance Datum) or thereabout at its western boundary and -62.4m (minus sixty two point four metres) OD (Ordnance Datum) or thereabouts at its eastern boundary.	43 - London Borough of Tower Hamlets	NGL8670
MNTLD/2036	857.3 square metres of a stratum of subsoil below flats (Old Sun Wharf) and hardstanding where the upper surface of the stratum of the sub-soil is at a level equivalent to -41.4m (minus forty one point four metres) OD (Ordnance Datum) or thereabout at its western boundary and -41.5m (minus forty one point five metres) OD (Ordnance Datum) or thereabouts at its eastern boundary, and the lower surface of the stratum of the sub-soil is at a level equivalent to -62.4m (minus sixty two point four metres) OD (Ordnance Datum) or thereabout at its western boundary and -62.4m (minus sixty two point four metres) OD (Ordnance Datum) or thereabouts at its eastern boundary.	44 - London Borough of Tower Hamlets	EGL479258
MNTLD/2039	27.8 square metres of a stratum of subsoil below public road and footway (Narrow Street) where the upper surface of the stratum of the sub-soil is at a level equivalent to -41.4m (minus forty one point four metres) OD (Ordnance Datum) or thereabout at its western boundary and -41.5m (minus forty one point five metres) OD (Ordnance Datum) or thereabouts at its eastern boundary, and the lower surface of the stratum of the sub-soil is at a level equivalent to -62.4m (minus sixty two point four metres) OD (Ordnance	45 - London Borough of Tower Hamlets	Unregistered

	Datum) or thereabout at its western boundary and -62.4m (minus sixty two point four metres) OD (Ordnance Datum) or thereabouts at its eastern boundary.		
MNTLD/2040	0.5 square metres of a stratum of subsoil below public road and footway (Narrow Street) where the upper surface of the stratum of the sub-soil is at a level equivalent to -41.5m (minus forty one point five metres) OD (Ordnance Datum) or thereabout at its western boundary and -41.5m (minus forty one point five metres) OD (Ordnance Datum) or thereabouts at its eastern boundary, and the lower surface of the stratum of the sub-soil is at a level equivalent to -62.4m (minus sixty two point four metres) OD (Ordnance Datum) or thereabout at its western boundary and -62.4m (minus sixty two point four metres) OD (Ordnance Datum) or thereabouts at its eastern boundary.	49 - London Borough of Tower Hamlets	LN85859, EGL453446
MNTLD/2041	215.7 square metres of a stratum of subsoil below public road and footways (Narrow Street) where the upper surface of the stratum of the sub-soil is at a level equivalent to -41.5m (minus forty one point five metres) OD (Ordnance Datum) or thereabout at its western boundary and -41.5m (minus forty one point five metres) OD (Ordnance Datum) or thereabouts at its eastern boundary, and the lower surface of the stratum of the sub-soil is at a level equivalent to -62.4m (minus sixty two point four metres) OD (Ordnance Datum) or thereabout at its western boundary and -62.5m (minus sixty two point five metres) OD (Ordnance Datum) or thereabouts at its eastern boundary.	48 - London Borough of Tower Hamlets	EGL552636
MNTLD/2042	104.4 square metres of a stratum of subsoil below public road and footways (Narrow Street) where the upper surface of the stratum of the sub-soil is at a level equivalent to -41.5m (minus forty one point five metres) OD (Ordnance Datum) or thereabout at its western boundary and -41.5m (minus forty one point five metres) OD (Ordnance Datum) or thereabouts at its eastern boundary, and the lower surface of the stratum of the sub-soil is at a level equivalent to -62.5m (minus sixty two point five metres) OD (Ordnance Datum) or thereabout at its western boundary and -62.5m (minus sixty two point five metres) OD (Ordnance Datum) or thereabouts at its eastern boundary.	48 - London Borough of Tower Hamlets	EGL552636
MNTLD/2043	0.1 square metres of a stratum of subsoil below flats (55, Narrow Street) where the upper surface of the stratum of the sub-soil is at a level equivalent to -41.5m (minus forty one point five metres) OD (Ordnance Datum) or thereabout at its western boundary and -41.5m (minus forty one point five metres) OD (Ordnance Datum) or thereabouts at its eastern boundary, and the lower surface of the stratum of the sub-soil is at a level equivalent to -62.5m (minus sixty two point five metres) OD (Ordnance Datum) or thereabout at its western boundary and -62.5m (minus sixty two point five metres) OD (Ordnance Datum) or thereabouts at its eastern boundary.	51 - London Borough of Tower Hamlets	EGL353163
MNTLD/2044	9.8 square metres of a stratum of subsoil below flats (57, Narrow Street) where the upper surface of the stratum of the sub-soil is at a level equivalent to -41.5m (minus forty one point five metres) OD (Ordnance Datum) or thereabout at its western boundary and -41.5m (minus forty one point five metres) OD (Ordnance Datum) or thereabouts at its eastern boundary, and the lower surface of the stratum of the sub-soil is at a level equivalent to -62.5m (minus sixty two point five metres) OD (Ordnance Datum) or thereabout at its western boundary and -62.5m (minus sixty two point five metres) OD (Ordnance Datum) or thereabouts at its eastern boundary.	52 - London Borough of Tower Hamlets	EGL353163
MNTLD/2045	21 square metres of a stratum of subsoil below car parking and hardstanding (42 to 114, Horseferry Road) where the upper surface of the stratum of the sub-soil is at a level equivalent to -41.5m (minus forty one point five metres) OD (Ordnance Datum) or thereabout at its western boundary and -41.5m (minus forty one	53 - London Borough of Tower Hamlets	EGL353163

	point five metres) OD (Ordnance Datum) or thereabouts at its eastern boundary, and the lower surface of the stratum of the sub-soil is at a level equivalent to -62.5m (minus sixty two point five metres) OD (Ordnance Datum) or thereabout at its western boundary and -62.5m (minus sixty two point five metres) OD (Ordnance Datum) or thereabouts at its eastern boundary.		
MNTLD/2046	2.5 square metres of a stratum of subsoil below flats (59, Narrow Street) where the upper surface of the stratum of the sub-soil is at a level equivalent to -41.5m (minus forty one point five metres) OD (Ordnance Datum) or thereabout at its western boundary and -41.5m (minus forty one point five metres) OD (Ordnance Datum) or thereabouts at its eastern boundary, and the lower surface of the stratum of the sub-soil is at a level equivalent to -62.5m (minus sixty two point five metres) OD (Ordnance Datum) or thereabout at its western boundary and -62.5m (minus sixty two point five metres) OD (Ordnance Datum) or thereabouts at its eastern boundary.	54 - London Borough of Tower Hamlets	EGL353163
MNTLD/2047	3.7 square metres of a stratum of subsoil below car parking and hardstanding (42 to 114, Horseferry Road) where the upper surface of the stratum of the sub-soil is at a level equivalent to -41.5m (minus forty one point five metres) OD (Ordnance Datum) or thereabout at its western boundary and -41.5m (minus forty one point five metres) OD (Ordnance Datum) or thereabouts at its eastern boundary, and the lower surface of the stratum of the sub-soil is at a level equivalent to -62.5m (minus sixty two point five metres) OD (Ordnance Datum) or thereabout at its western boundary and -62.5m (minus sixty two point five metres) OD (Ordnance Datum) or thereabouts at its eastern boundary.	53 - London Borough of Tower Hamlets	EGL353163
MNTLD/2048	35 square metres of a stratum of subsoil below flats (59, Narrow Street) where the upper surface of the stratum of the sub-soil is at a level equivalent to -41.5m (minus forty one point five metres) OD (Ordnance Datum) or thereabout at its western boundary and -41.5m (minus forty one point five metres) OD (Ordnance Datum) or thereabouts at its eastern boundary, and the lower surface of the stratum of the sub-soil is at a level equivalent to -62.5m (minus sixty two point five metres) OD (Ordnance Datum) or thereabout at its western boundary and -62.5m (minus sixty two point five metres) OD (Ordnance Datum) or thereabouts at its eastern boundary.	54 - London Borough of Tower Hamlets	EGL353163
MNTLD/2049	39.1 square metres of a stratum of subsoil below flats (61, Narrow Street) where the upper surface of the stratum of the sub-soil is at a level equivalent to -41.5m (minus forty one point five metres) OD (Ordnance Datum) or thereabout at its western boundary and -41.5m (minus forty one point five metres) OD (Ordnance Datum) or thereabouts at its eastern boundary, and the lower surface of the stratum of the sub-soil is at a level equivalent to -62.5m (minus sixty two point five metres) OD (Ordnance Datum) or thereabout at its western boundary and -62.5m (minus sixty two point five metres) OD (Ordnance Datum) or thereabouts at its eastern boundary.	55 - London Borough of Tower Hamlets	EGL353163
MNTLD/2050	53 square metres of a stratum of subsoil below flats (63, Narrow Street) where the upper surface of the stratum of the sub-soil is at a level equivalent to -41.5m (minus forty one point five metres) OD (Ordnance Datum) or thereabout at its western boundary and -41.5m (minus forty one point five metres) OD (Ordnance Datum) or thereabouts at its eastern boundary, and the lower surface of the stratum of the sub-soil is at a level equivalent to -62.5m (minus sixty two point five metres) OD (Ordnance Datum) or thereabout at its western boundary and -62.5m (minus sixty two point five metres) OD (Ordnance Datum) or thereabouts at its eastern boundary.	56 - London Borough of Tower Hamlets	EGL353163

MNTLD/2051	19.6 square metres of a stratum of subsoil below public road, footway and car parking (Horseferry Road) where the upper surface of the stratum of the sub-soil is at a level equivalent to -41.5m (minus forty one point five metres) OD (Ordnance Datum) or thereabout at its western boundary and -41.5m (minus forty one point five metres) OD (Ordnance Datum) or thereabouts at its eastern boundary, and the lower surface of the stratum of the sub-soil is at a level equivalent to -62.5m (minus sixty two point five metres) OD (Ordnance Datum) or thereabout at its western boundary and -62.5m (minus sixty two point five metres) OD (Ordnance Datum) or thereabouts at its eastern boundary.	59 - London Borough of Tower Hamlets	EGL218237
MNTLD/2052	6.6 square metres of a stratum of subsoil below public footway (Narrow Street) where the upper surface of the stratum of the sub-soil is at a level equivalent to -41.5m (minus forty one point five metres) OD (Ordnance Datum) or thereabout at its western boundary and -41.5m (minus forty one point five metres) OD (Ordnance Datum) or thereabouts at its eastern boundary, and the lower surface of the stratum of the sub-soil is at a level equivalent to -62.5m (minus sixty two point five metres) OD (Ordnance Datum) or thereabout at its western boundary and -62.5m (minus sixty two point five metres) OD (Ordnance Datum) or thereabouts at its eastern boundary.	58 - London Borough of Tower Hamlets	EGL283595
MNTLD/2053	0.9 square metres of a stratum of subsoil below public footway (Narrow Street) where the upper surface of the stratum of the sub-soil is at a level equivalent to -41.5m (minus forty one point five metres) OD (Ordnance Datum) or thereabout at its western boundary and -41.5m (minus forty one point five metres) OD (Ordnance Datum) or thereabouts at its eastern boundary, and the lower surface of the stratum of the sub-soil is at a level equivalent to -62.5m (minus sixty two point five metres) OD (Ordnance Datum) or thereabout at its western boundary and -62.5m (minus sixty two point five metres) OD (Ordnance Datum) or thereabouts at its eastern boundary.	58 - London Borough of Tower Hamlets	EGL283595
MNTLD/2054	89.8 square metres of a stratum of subsoil below car parking and hardstanding (42 to 114, Horseferry Road) where the upper surface of the stratum of the sub-soil is at a level equivalent to -41.5m (minus forty one point five metres) OD (Ordnance Datum) or thereabout at its western boundary and -41.5m (minus forty one point five metres) OD (Ordnance Datum) or thereabouts at its eastern boundary, and the lower surface of the stratum of the sub-soil is at a level equivalent to -62.5m (minus sixty two point five metres) OD (Ordnance Datum) or thereabout at its western boundary and -62.5m (minus sixty two point five metres) OD (Ordnance Datum) or thereabouts at its eastern boundary.	58 - London Borough of Tower Hamlets	EGL353163
MNTLD/2055	208.2 square metres of a stratum of subsoil below flats (42 to 114, Horseferry Road) where the upper surface of the stratum of the sub-soil is at a level equivalent to -41.5m (minus forty one point five metres) OD (Ordnance Datum) or thereabout at its western boundary and -41.5m (minus forty one point five metres) OD (Ordnance Datum) or thereabouts at its eastern boundary, and the lower surface of the stratum of the sub-soil is at a level equivalent to -62.5m (minus sixty two point five metres) OD (Ordnance Datum) or thereabout at its western boundary and -62.5m (minus sixty two point five metres) OD (Ordnance Datum) or thereabouts at its eastern boundary.	57 - London Borough of Tower Hamlets	EGL283595, EGL537893, EGL312787, EGL314181
MNTLD/2056	81.5 square metres of a stratum of subsoil below public road, footway and car parking (Horseferry Road) where the upper surface of the stratum of the sub-soil is at a level equivalent to -41.5m (minus forty one point five metres) OD (Ordnance Datum) or thereabout at its western boundary and -41.5m (minus forty one point five metres) OD (Ordnance Datum) or thereabouts at its eastern boundary, and the lower surface of the stratum of the sub-soil is at a level equivalent to -62.5m (minus sixty two point five	59 - London Borough of Tower Hamlets	EGL218237

	metres) OD (Ordnance Datum) or thereabout at its western boundary and -62.5m (minus sixty two point five metres) OD (Ordnance Datum) or thereabouts at its eastern boundary.		
MNTLD/2057	169.9 square metres of a stratum of subsoil below public, footways, car parking and cycle lane (Horseferry Road) where the upper surface of the stratum of the sub-soil is at a level equivalent to -41.5m (minus forty one point five metres) OD (Ordnance Datum) or thereabout at its western boundary and -41.6m (minus forty one point six metres) OD (Ordnance Datum) or thereabouts at its eastern boundary, and the lower surface of the stratum of the sub-soil is at a level equivalent to -62.5m (minus sixty two point five metres) OD (Ordnance Datum) or thereabout at its western boundary and -62.5m (minus sixty two point five metres) OD (Ordnance Datum) or thereabouts at its eastern boundary.	60 - London Borough of Tower Hamlets	EGL552636
MNTLD/2058	19.9 square metres of a stratum of subsoil below flats (67 to 75, Goodhart Place), storage, office and access where the upper surface of the stratum of the sub-soil is at a level equivalent to -41.6m (minus forty one point six metres) OD (Ordnance Datum) or thereabout at its western boundary and -41.6m (minus forty one point six metres) OD (Ordnance Datum) or thereabouts at its eastern boundary, and the lower surface of the stratum of the sub-soil is at a level equivalent to -62.5m (minus sixty two point five metres) OD (Ordnance Datum) or thereabout at its western boundary and -62.5m (minus sixty two point five metres) OD (Ordnance Datum) or thereabouts at its eastern boundary.	62 - London Borough of Tower Hamlets	EGL265182
MNTLD/2059	1310.5 square metres of a stratum of subsoil below car parking (Goodhart Place), gardens, hardstanding and access where the upper surface of the stratum of the sub-soil is at a level equivalent to -41.5m (minus forty one point five metres) OD (Ordnance Datum) or thereabout at its western boundary and -41.7m (minus forty one point seven metres) OD (Ordnance Datum) or thereabouts at its eastern boundary, and the lower surface of the stratum of the sub-soil is at a level equivalent to -62.5m (minus sixty two point five metres) OD (Ordnance Datum) or thereabout at its western boundary and -62.6m (minus sixty two point six metres) OD (Ordnance Datum) or thereabouts at its eastern boundary.	61 - London Borough of Tower Hamlets	EGL265182
MNTLD/2060	213.1 square metres of a stratum of subsoil below flats (1 to 7, Goodhart Place) where the upper surface of the stratum of the sub-soil is at a level equivalent to -41.6m (minus forty one point six metres) OD (Ordnance Datum) or thereabout at its western boundary and -41.6m (minus forty one point six metres) OD (Ordnance Datum) or thereabouts at its eastern boundary, and the lower surface of the stratum of the sub-soil is at a level equivalent to -62.5m (minus sixty two point five metres) OD (Ordnance Datum) or thereabout at its western boundary and -62.5m (minus sixty two point five metres) OD (Ordnance Datum) or thereabouts at its eastern boundary.	63 - London Borough of Tower Hamlets	EGL265182, EGL314174, EGL311863, EGL282946, EGL285688, EGL293964, EGL323262
MNTLD/2061	4.4 square metres of a stratum of subsoil below flats (8 to 11, Goodhart Place) where the upper surface of the stratum of the sub-soil is at a level equivalent to -41.6m (minus forty one point six metres) OD (Ordnance Datum) or thereabout at its western boundary and -41.6m (minus forty one point six metres) OD (Ordnance Datum) or thereabouts at its eastern boundary, and the lower surface of the stratum of the sub-soil is at a level equivalent to -62.5m (minus sixty two point five metres) OD (Ordnance Datum) or thereabout at its western boundary and -62.5m (minus sixty two point five metres) OD (Ordnance Datum) or thereabouts at its eastern boundary.	64 - London Borough of Tower Hamlets	EGL265182, EGL292536
MNTLD/2062	0.1 square metres of a stratum of subsoil below flats (61 to 66, Goodhart Place) where the upper surface of the stratum of the sub-soil is at a level equivalent to -41.6m (minus forty one point six metres) OD (Ordnance Datum) or thereabout at its western boundary and -41.6m (minus forty one point six metres) OD	66 - London Borough of Tower Hamlets	EGL265182

	(Ordnance Datum) or thereabouts at its eastern boundary, and the lower surface of the stratum of the sub-soil is at a level equivalent to -62.6m (minus sixty two point six metres) OD (Ordnance Datum) or thereabout at its western boundary and -62.6m (minus sixty two point six metres) OD (Ordnance Datum) or thereabouts at its eastern boundary.		
MNTLD/2063	43.3 square metres of a stratum of subsoil below flats (53 to 60, Goodhart Place) where the upper surface of the stratum of the sub-soil is at a level equivalent to -41.6m (minus forty one point six metres) OD (Ordnance Datum) or thereabout at its western boundary and -41.6m (minus forty one point six metres) OD (Ordnance Datum) or thereabouts at its eastern boundary, and the lower surface of the stratum of the sub-soil is at a level equivalent to -62.6m (minus sixty two point six metres) OD (Ordnance Datum) or thereabout at its western boundary and -62.6m (minus sixty two point six metres) OD (Ordnance Datum) or thereabouts at its eastern boundary.	67 - London Borough of Tower Hamlets	EGL265182, EGL287848, EGL322691, EGL281665
MNTLD/2064	263.8 square metres of a stratum of subsoil below flats (47 to 52, Goodhart Place) where the upper surface of the stratum of the sub-soil is at a level equivalent to -41.6m (minus forty one point six metres) OD (Ordnance Datum) or thereabout at its western boundary and -41.7m (minus forty one point seven metres) OD (Ordnance Datum) or thereabouts at its eastern boundary, and the lower surface of the stratum of the sub-soil is at a level equivalent to -62.6m (minus sixty two point six metres) OD (Ordnance Datum) or thereabout at its western boundary and -62.6m (minus sixty two point six metres) OD (Ordnance Datum) or thereabouts at its eastern boundary.	68 - London Borough of Tower Hamlets	EGL265182, EGL293746, EGL321419, EGL333159, EGL320589, EGL333164, EGL326181
MNTLD/2065	59.6 square metres of a stratum of subsoil below flats (40 to 45, Goodhart Place) where the upper surface of the stratum of the sub-soil is at a level equivalent to -41.6m (minus forty one point six metres) OD (Ordnance Datum) or thereabout at its western boundary and -41.6m (minus forty one point six metres) OD (Ordnance Datum) or thereabouts at its eastern boundary, and the lower surface of the stratum of the sub-soil is at a level equivalent to -62.6m (minus sixty two point six metres) OD (Ordnance Datum) or thereabout at its western boundary and -62.6m (minus sixty two point six metres) OD (Ordnance Datum) or thereabouts at its eastern boundary.	69 - London Borough of Tower Hamlets	EGL265182, EGL333169, EGL326396, EGL308764
MNTLD/2066	122.6 square metres of a stratum of subsoil below office (46, Goodhart Place) where the upper surface of the stratum of the sub-soil is at a level equivalent to -41.7m (minus forty one point seven metres) OD (Ordnance Datum) or thereabout at its western boundary and -41.7m (minus forty one point seven metres) OD (Ordnance Datum) or thereabouts at its eastern boundary, and the lower surface of the stratum of the sub-soil is at a level equivalent to -62.6m (minus sixty two point six metres) OD (Ordnance Datum) or thereabout at its western boundary and -62.6m (minus sixty two point six metres) OD (Ordnance Datum) or thereabouts at its eastern boundary.	70 - London Borough of Tower Hamlets	AGL347640, AGL455128
MNTLD/2067	646.7 square metres of a stratum of subsoil below marina and pontoons (Limehouse Basin) where the upper surface of the stratum of the sub-soil is at a level equivalent to -41.7m (minus forty one point seven metres) OD (Ordnance Datum) or thereabout at its western boundary and -41.8m (minus forty one point eight metres) OD (Ordnance Datum) or thereabouts at its eastern boundary, and the lower surface of the stratum of the sub-soil is at a level equivalent to -62.6m (minus sixty two point six metres) OD (Ordnance Datum) or thereabout at its western boundary and -62.8m (minus sixty two point eight metres) OD (Ordnance Datum) or thereabouts at its eastern boundary.	72 - London Borough of Tower Hamlets	EGL218237, AGL444161



MNTLD/2068	613.6 square metres of a stratum of subsoil below marina (Limehouse Basin) where the upper surface of the stratum of the sub-soil is at a level equivalent to -41.7m (minus forty one point seven metres) OD (Ordnance Datum) or thereabout at its western boundary and -41.8m (minus forty one point eight metres) OD (Ordnance Datum) or thereabouts at its eastern boundary, and the lower surface of the stratum of the sub-soil is at a level equivalent to -62.6m (minus sixty two point six metres) OD (Ordnance Datum) or thereabout at its western boundary and -62.8m (minus sixty two point eight metres) OD (Ordnance Datum) or thereabouts at its eastern boundary.	71 - London Borough of Tower Hamlets	EGL218237, AGL346183
MNTLD/2069	101.2 square metres of a stratum of subsoil below private footway (off Basin Approach) where the upper surface of the stratum of the sub-soil is at a level equivalent to -41.8m (minus forty one point eight metres) OD (Ordnance Datum) or thereabout at its western boundary and -41.8m (minus forty one point eight metres) OD (Ordnance Datum) or thereabouts at its eastern boundary, and the lower surface of the stratum of the sub-soil is at a level equivalent to -62.8m (minus sixty two point eight metres) OD (Ordnance Datum) or thereabout at its western boundary and -62.8m (minus sixty two point eight metres) OD (Ordnance Datum) or thereabouts at its eastern boundary.	73 - London Borough of Tower Hamlets	EGL218237
MNTLD/2190	158.5 square metres of a stratum of subsoil below hardstanding (Chambers Wharf) where the upper surface of the stratum of the sub-soil is at a level equivalent to -39.1m (minus thirty nine point one metres) OD (Ordnance Datum) or thereabout at its western boundary and -39.2m (minus thirty nine point two metres) OD (Ordnance Datum) or thereabouts at its eastern boundary, and the lower surface of the stratum of the sub-soil is at a level equivalent to -58.9m (minus fifty eight point nine metres) OD (Ordnance Datum) or thereabout at its western boundary and -59m (minus fifty nine metres) OD (Ordnance Datum) or thereabouts at its eastern boundary.	26 - London Borough of Southwark	SGL246760
MNTLD/2191	2.5 square metres of a stratum of subsoil below river wall (Fountain Green Square) where the upper surface of the stratum of the sub-soil is at a level equivalent to -38.7m (minus thirty eight point seven metres) OD (Ordnance Datum) or thereabout at its western boundary and -38.7m (minus thirty eight point seven metres) OD (Ordnance Datum) or thereabouts at its eastern boundary, and the lower surface of the stratum of the sub-soil is at a level equivalent to -59.7m (minus fifty nine point seven metres) OD (Ordnance Datum) or thereabout at its western boundary and -59.7m (minus fifty nine point seven metres) OD (Ordnance Datum) or thereabouts at its eastern boundary.	30 - London Borough of Southwark	LN42853
MNTLD/2214	96 square metres of a stratum of subsoil below hardstanding and access (Goodhart Place) where the upper surface of the stratum of the sub-soil is at a level equivalent to -41.7m (minus forty one point seven metres) OD (Ordnance Datum) or thereabout at its western boundary and -41.7m (minus forty one point seven metres) OD (Ordnance Datum) or thereabouts at its eastern boundary, and the lower surface of the stratum of the sub-soil is at a level equivalent to -62.6m (minus sixty two point six metres) OD (Ordnance Datum) or thereabout at its western boundary and -62.6m (minus sixty two point six metres) OD (Ordnance Datum) or thereabouts at its eastern boundary.	61 - London Borough of Tower Hamlets	EGL306977
MNTLD/2215	217.1 square metres of a stratum of subsoil below hardstanding and access (Goodhart Place) where the upper surface of the stratum of the sub-soil is at a level equivalent to -41.7m (minus forty one point seven metres) OD (Ordnance Datum) or thereabout at its western boundary and -41.7m (minus forty one point seven metres) OD (Ordnance Datum) or thereabouts at its eastern boundary, and the lower surface of the stratum of the sub-soil is at a level equivalent to -62.6m (minus sixty two point six metres) OD (Ordnance Datum)	61 - London Borough of Tower Hamlets	AGL347640

	or thereabout at its western boundary and -62.6m (minus sixty two point six metres) OD (Ordnance Datum) or thereabouts at its eastern boundary.		
MNTLD/2219	81.6 square metres of a stratum of subsoil below marina and pontoons (Limehouse Basin) where the upper surface of the stratum of the sub-soil is at a level equivalent to -41.7m (minus forty one point seven metres) OD (Ordnance Datum) or thereabout at its western boundary and -41.8m (minus forty one point eight metres) OD (Ordnance Datum) or thereabouts at its eastern boundary, and the lower surface of the stratum of the sub-soil is at a level equivalent to -62.6m (minus sixty two point six metres) OD (Ordnance Datum) or thereabout at its western boundary and -62.8m (minus sixty two point eight metres) OD (Ordnance Datum) or thereabouts at its eastern boundary.	72 - London Borough of Tower Hamlets	EGL218237, AGL346183
MNTLD/2242	126.4 square metres of a stratum of subsoil below marina (Limehouse Basin) where the upper surface of the stratum of the sub-soil is at a level equivalent to -41.7m (minus forty one point seven metres) OD (Ordnance Datum) or thereabout at its western boundary and -41.8m (minus forty one point eight metres) OD (Ordnance Datum) or thereabouts at its eastern boundary, and the lower surface of the stratum of the sub-soil is at a level equivalent to -62.6m (minus sixty two point six metres) OD (Ordnance Datum) or thereabout at its western boundary and -62.8m (minus sixty two point eight metres) OD (Ordnance Datum) or thereabouts at its eastern boundary.	71 - London Borough of Tower Hamlets	EGL218237, AGL444161
MNTLD/2243	106.4 square metres of a stratum of subsoil below marina (Limehouse Basin) where the upper surface of the stratum of the sub-soil is at a level equivalent to -41.7m (minus forty one point seven metres) OD (Ordnance Datum) or thereabout at its western boundary and -41.8m (minus forty one point eight metres) OD (Ordnance Datum) or thereabouts at its eastern boundary, and the lower surface of the stratum of the sub-soil is at a level equivalent to -62.6m (minus sixty two point six metres) OD (Ordnance Datum) or thereabout at its western boundary and -62.8m (minus sixty two point eight metres) OD (Ordnance Datum) or thereabouts at its eastern boundary.	71 - London Borough of Tower Hamlets	EGL218237, AGL346183, AGL444161
MNTLD/2244	317.1 square metres of a stratum of subsoil below marina and pontoons (Limehouse Basin) where the upper surface of the stratum of the sub-soil is at a level equivalent to -41.7m (minus forty one point seven metres) OD (Ordnance Datum) or thereabout at its western boundary and -41.8m (minus forty one point eight metres) OD (Ordnance Datum) or thereabouts at its eastern boundary, and the lower surface of the stratum of the sub-soil is at a level equivalent to -62.6m (minus sixty two point six metres) OD (Ordnance Datum) or thereabout at its western boundary and -62.8m (minus sixty two point eight metres) OD (Ordnance Datum) or thereabouts at its eastern boundary.	72 - London Borough of Tower Hamlets	EGL218237
MNTLD/2248	18.9 square metres of a stratum of subsoil below public road, footway and car parking (Horseferry Road) where the upper surface of the stratum of the sub-soil is at a level equivalent to -41.5m (minus forty one point five metres) OD (Ordnance Datum) or thereabout at its western boundary and -41.5m (minus forty one point five metres) OD (Ordnance Datum) or thereabouts at its eastern boundary, and the lower surface of the stratum of the sub-soil is at a level equivalent to -62.5m (minus sixty two point five metres) OD (Ordnance Datum) or thereabout at its western boundary and -62.5m (minus sixty two point five metres) OD (Ordnance Datum) or thereabouts at its eastern boundary.	59 - London Borough of Tower Hamlets	EGL552636
MNTLD/2249	20.8 square metres of a stratum of subsoil below flats (42 to 114, Horseferry Road) where the upper surface of the stratum of the sub-soil is at a level equivalent to -41.5m (minus forty one point five metres) OD (Ordnance Datum) or thereabout at its western boundary and -41.5m (minus forty one point five metres) OD	57 - London Borough of Tower Hamlets	EGL353163

	(Ordnance Datum) or thereabouts at its eastern boundary, and the lower surface of the stratum of the sub-soil is at a level equivalent to -62.5m (minus sixty two point five metres) OD (Ordnance Datum) or thereabout at its western boundary and -62.5m (minus sixty two point five metres) OD (Ordnance Datum) or thereabouts at its eastern boundary.		
MNTLD/2250	13.7 square metres of a stratum of subsoil below public road and footways (Narrow Street) where the upper surface of the stratum of the sub-soil is at a level equivalent to -41.5m (minus forty one point five metres) OD (Ordnance Datum) or thereabout at its western boundary and -41.5m (minus forty one point five metres) OD (Ordnance Datum) or thereabouts at its eastern boundary, and the lower surface of the stratum of the sub-soil is at a level equivalent to -62.5m (minus sixty two point five metres) OD (Ordnance Datum) or thereabout at its western boundary and -62.5m (minus sixty two point five metres) OD (Ordnance Datum) or thereabouts at its eastern boundary.	48 - London Borough of Tower Hamlets	EGL218237
MNTLD/2251	8.6 square metres of a stratum of subsoil below garden (12, Fountain Green Square) where the upper surface of the stratum of the sub-soil is at a level equivalent to -38.7m (minus thirty eight point seven metres) OD (Ordnance Datum) or thereabout at its western boundary and -38.7m (minus thirty eight point seven metres) OD (Ordnance Datum) or thereabouts at its eastern boundary, and the lower surface of the stratum of the sub-soil is at a level equivalent to -59.7m (minus fifty nine point seven metres) OD (Ordnance Datum) or thereabout at its western boundary and -59.7m (minus fifty nine point seven metres) OD (Ordnance Datum) or thereabouts at its eastern boundary.	32 - London Borough of Southwark	LN42853
MNTLD/2264	1 square metre of a stratum of subsoil below hardstanding (Fountain Green Square) where the upper surface of the stratum of the sub-soil is at a level equivalent to -38.7m (minus thirty eight point seven metres) OD (Ordnance Datum) or thereabout at its western boundary and -38.7m (minus thirty eight point seven metres) OD (Ordnance Datum) or thereabouts at its eastern boundary, and the lower surface of the stratum of the sub-soil is at a level equivalent to -59.6m (minus fifty nine point six metres) OD (Ordnance Datum) or thereabout at its western boundary and -59.6m (minus fifty nine point six metres) OD (Ordnance Datum) or thereabouts at its eastern boundary.	31 - London Borough of Southwark	LN42853

**EXECUTION PAGE**

The Common seal of **Thames Water** )  
**Utilities Limited** was affixed in the )  
presence of: )

Jacqueline Sandison  
Senior Legal Counsel



2024-1406

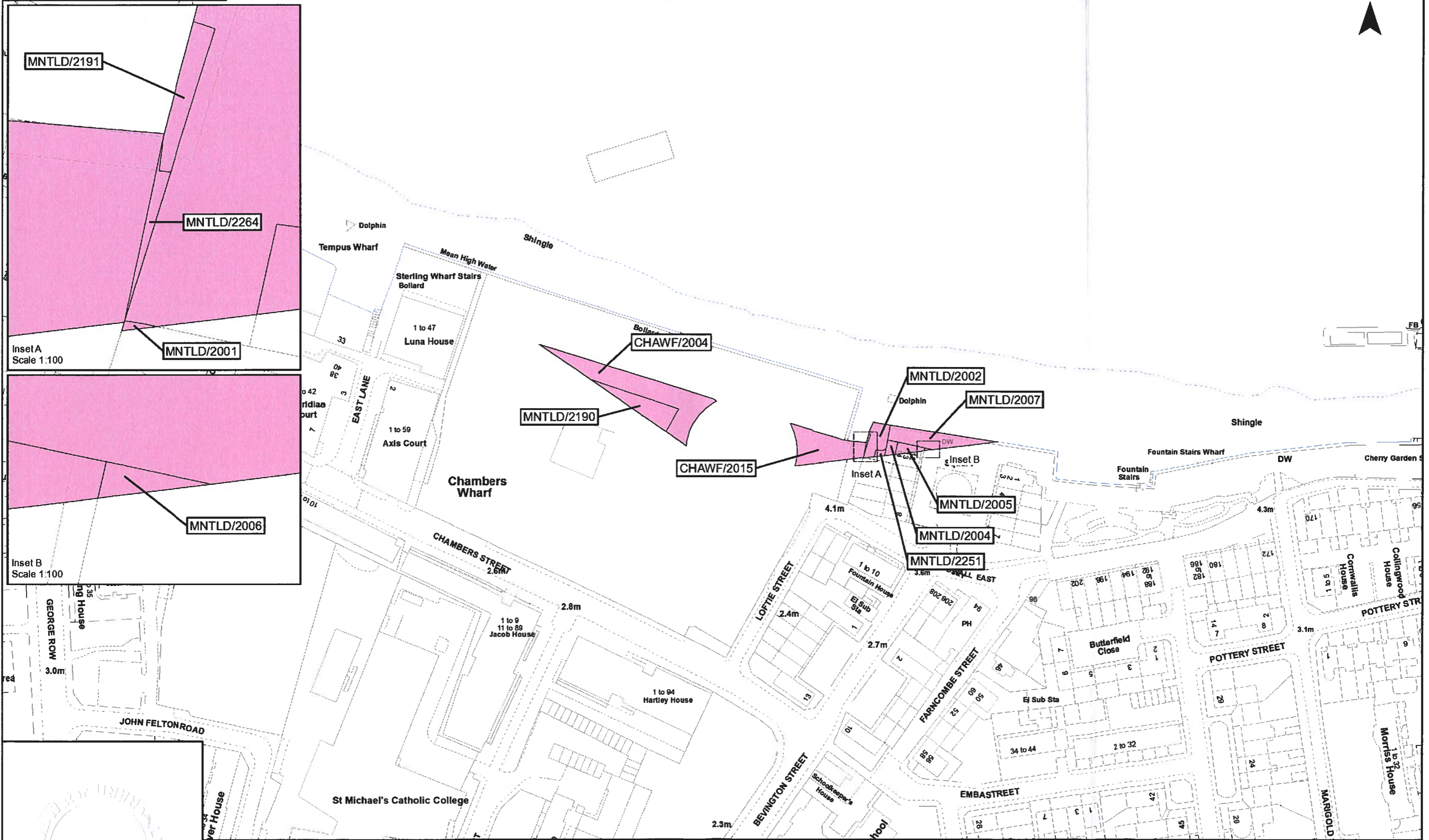
A handwritten signature in blue ink, appearing to be 'J. Sandison', written over a dotted line.

Authorised Signatory

12 June 2024

Date

This map is reproduced from Ordnance Survey material with permission of Ordnance Survey on behalf of the Controller of Her Majesty's Stationery Office. © Crown Copyright. Unauthorised reproduction infringes Crown Copyright and may lead to prosecution or civil proceedings. 100022432 2024



2024-1407

The Common seal of Thames Water Utilities Limited was affixed in the presence of:

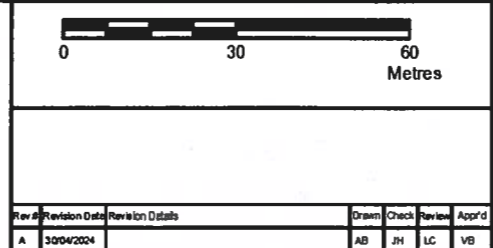
*[Signature]*  
 Authorised Signatory

Dated: 12 June 2024

Key

Permanent Acquisition of Land

Jacqueline Sandison  
 Senior Legal Counsel



**Tideway**

Date: 30/04/2024

Scale at A3: 1:1,250

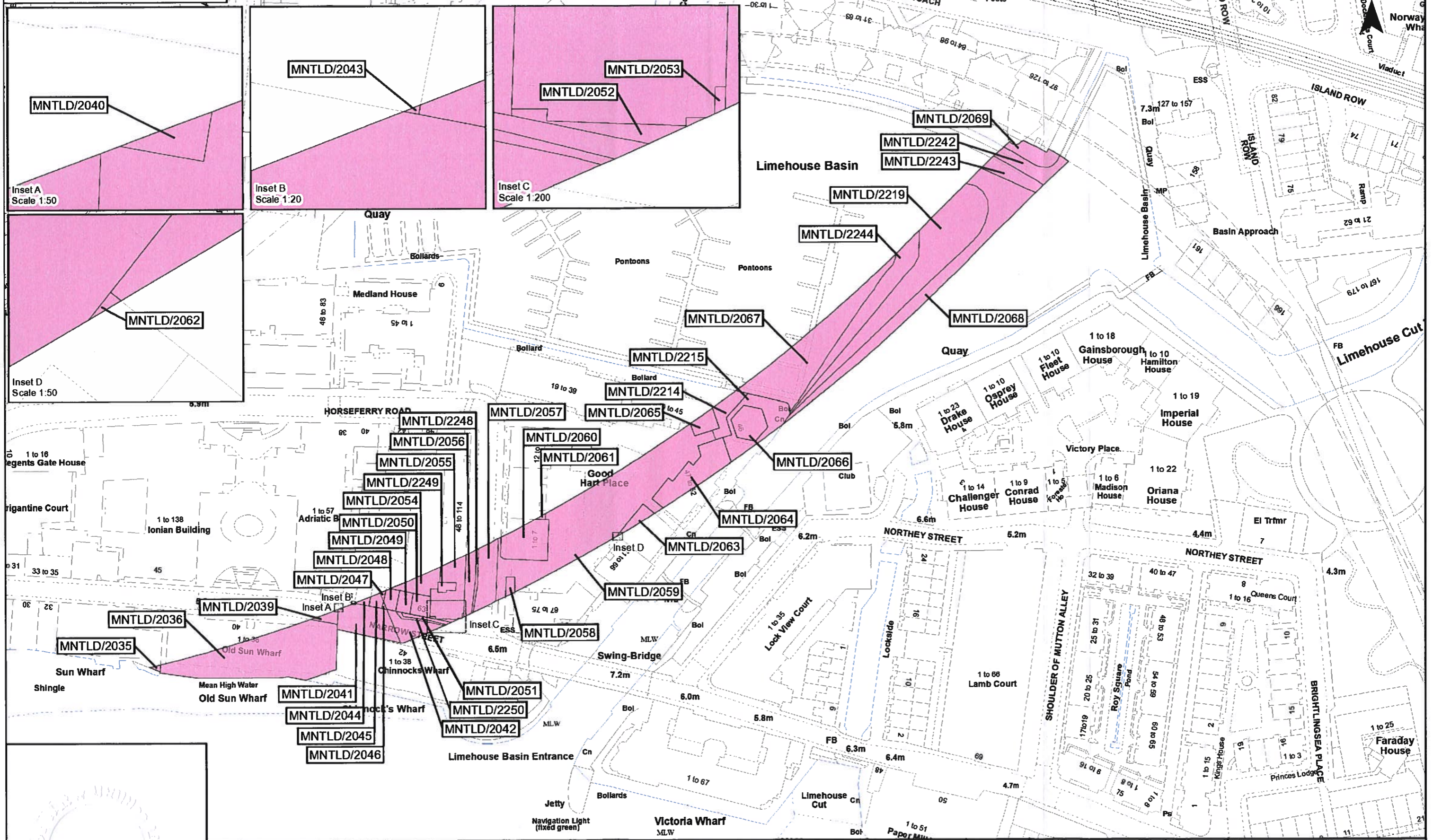
The Thames Water Utilities Limited (Thames Tideway Tunnel) Order 2014 (AS AMENDED) SI 2014 NO 2384

Plan referred to in General Vesting Declaration No 38 of The Thames Water Utilities Limited (Thames Tideway Tunnel) Order 2014 (AS AMENDED) SI 2014 NO 2384

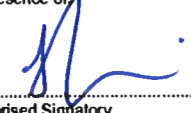
For identification only


Document Reference: 70054885-NTC-GVD-TR2-GVD38-0001

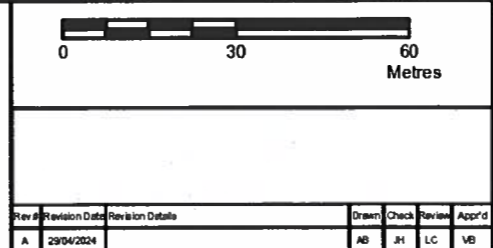
This map is reproduced from Ordnance Survey material with permission of Ordnance Survey on behalf of the Controller of Her Majesty's Stationary Office. © Crown Copyright. Unauthorised reproduction infringes Crown Copyright and may lead to prosecution or civil proceedings. 100022432 2024



2024-1408

The Common seal of Thames Water Utilities Limited was affixed in the presence of  
  
 Authorised Signatory  
 Dated: 12 June 2024

Key  
 Permanent Acquisition of Land  
 Jacqueline Sandison  
 Senior Legal Counsel



The Thames Water Utilities Limited (Thames Tideway Tunnel) Order 2014 (AS AMENDED) SI 2014 NO 2384  
 Drawing Title: Plan referred to in General Vesting Declaration No. 38 of The Thames Water Utilities Limited (Thames Tideway Tunnel) Order 2014 (AS AMENDED) SI 2014 NO 2384  
 Status: For identification only  
 Document Reference: 70054885-NTC-GVD-TR2-GVD38-0002