

THE THAMES WATER UTILITIES LIMITED (THAMES TIDEWAY TUNNEL) ORDER 2014 (AS AMENDED)¹ SI 2014 NO.2384

GENERAL VESTING DECLARATION No. 36

This GENERAL VESTING DECLARATION NO. 36 is made the *12th* day of *June* 2024 by Thames Water Utilities Limited ("Thames Water").

WHEREAS:

- 1 On 3 September 2014 an order entitled The Thames Water Utilities Limited (Thames Tideway Tunnel) Order 2014 (as amended) SI 2014 No.2384 ("the Order") was made (and came into force on 24 September 2014) by the Secretaries of State for Communities and Local Government and Environment, Food and Rural Affairs under the powers conferred on them by the Planning Act 2008 authorising Thames Water to acquire the land specified in the Schedule hereto.
- 2 Notice of the making/confirmation of the Order was first published in accordance with section 134 of the Planning Act 2008 on 19 September 2014.
- 3 Preliminary notice of the intention to make a general vesting declaration in respect of any of the land described in the Schedule hereto was first published on **24 November 2023** in accordance with section 3 of the Compulsory Purchase (Vesting Declarations) Act 1981 ("the 1981 Act")², as modified by Article 34 of the Order.
- 4 That preliminary notice included the particulars specified in section 3(3) of the 1981 Act, as modified by Article 34 of the Order.
- 5 The notice referred to in (4) above specified the period of two months beginning with the date of its first publication as the period before the end of which this general vesting declaration could not be executed.

NOW THIS DEED WITNESSETH that, in exercise of the powers conferred on them by the Order and section 4 of the 1981 Act, Thames Water hereby declare:

The land described in the Schedule hereto being part of the land authorised to be acquired by the Order and more particularly delineated on the plans annexed hereto, together with the right to enter upon and take possession of the land shall vest in the Thames Water as from the end of the period of 28 days from the date on which the service of notices required by section 6 of the 1981 Act and in accordance with Article 34 of the Order is completed.

¹ The Order has been amended by (1) SI 2015/723 issued on 17 March 2015; (2) SI 2017/659 issued on 16 May 2017; (3) SI 2018/1262 issued 29 November 2018; (4) Notices of Variation Nos.1 and 2 Issued on 17 March 2015 and 17 August 2017 respectively in respect of the Deemed Marine Licence; (5) SI 2020/268 issued on 10 March 2020; and (6) SI 2020/862 issued on 13 August 2020.

² The Version of the 1981 Act is the version that applied immediately prior to amendments brought in by the Housing and Planning Bill on 13 October 2015 and as modified by the Order.

SCHEDULE

The land

<u>Reference number on attached notice plan</u>	<u>Description of the land</u>	<u>Associated Book of Reference plot number</u>	<u>Title Number</u>
GRECT/2141	0.8 square metres of a stratum of subsoil below house and garden (173, Lower Road) where the upper surface of the stratum of the sub-soil is at a level equivalent to -35.8m (minus thirty five point eight metres) OD (Ordnance Datum) or thereabout at its western boundary and -35.8m (minus thirty five point eight metres) OD (Ordnance Datum) or thereabouts at its eastern boundary, and the lower surface of the stratum of the sub-soil is at a level equivalent to -53.7m (minus fifty three point seven metres) OD (Ordnance Datum) or thereabout at its western boundary and -53.7m (minus fifty three point seven metres) OD (Ordnance Datum) or thereabouts at its eastern boundary.	218 - London Borough of Southwark	LN77178
GRECT/2150	100 square metres of a stratum of subsoil below house and garden (173, Lower Road) where the upper surface of the stratum of the sub-soil is at a level equivalent to -35.8m (minus thirty five point eight metres) OD (Ordnance Datum) or thereabout at its western boundary and -35.8m (minus thirty five point eight metres) OD (Ordnance Datum) or thereabouts at its eastern boundary, and the lower surface of the stratum of the sub-soil is at a level equivalent to -53.7m (minus fifty three point seven metres) OD (Ordnance Datum) or thereabout at its western boundary and -53.7m (minus fifty three point seven metres) OD (Ordnance Datum) or thereabouts at its eastern boundary.	228 - London Borough of Southwark	LN77178
GRECT/2151	98.2 square metres of a stratum of subsoil below house and garden (177, Lower Road) where the upper surface of the stratum of the sub-soil is at a level equivalent to -35.8m (minus thirty five point eight metres) OD (Ordnance Datum) or thereabout at its western boundary and -35.8m (minus thirty five point eight metres) OD (Ordnance Datum) or thereabouts at its eastern boundary, and the lower surface of the stratum of the sub-soil is at a level equivalent to -53.6m (minus fifty three point six metres) OD (Ordnance Datum) or thereabout at its western boundary and -53.6m (minus fifty three point six metres) OD (Ordnance Datum) or thereabouts at its eastern boundary.	231 - London Borough of Southwark	TGL551803
GRECT/2152	84 square metres of a stratum of subsoil below house and garden (179, Lower Road) where the upper surface of the stratum of the sub-soil is at a level equivalent to -35.8m (minus thirty five point eight metres) OD (Ordnance Datum) or thereabout at its western boundary and -35.8m (minus thirty five point eight metres) OD (Ordnance Datum) or thereabouts at its eastern boundary, and the lower surface of the stratum of the sub-soil is at a level equivalent to -53.7m (minus fifty three point seven metres) OD (Ordnance Datum) or thereabout at its western boundary and -53.6m (minus fifty three point six metres) OD (Ordnance Datum) or thereabouts at its eastern boundary.	232 - London Borough of Southwark	TGL551803
GRECT/2153	85.4 square metres of a stratum of subsoil below house and garden (181, Lower Road) where the upper surface of the stratum of the sub-soil is at a level equivalent to -35.8m (minus thirty five point eight metres) OD (Ordnance Datum) or thereabout at its western boundary and -35.8m (minus thirty five point eight metres) OD (Ordnance Datum) or thereabouts at its eastern boundary, and the lower surface of the stratum of the sub-soil is at a level equivalent to -53.6m (minus fifty three point six metres) OD (Ordnance Datum) or thereabout at its western boundary and -53.6m (minus fifty three point six metres) OD (Ordnance Datum) or thereabouts at its eastern boundary.	233 - London Borough of Southwark	TGL551803

GRECT/2156	2527.8 square metres of a stratum of subsoil below car park (Surrey Quays Shopping Centre) and private road (Deal Porters Way) where the upper surface of the stratum of the sub-soil is at a level equivalent to -35.7m (minus thirty five point seven metres) OD (Ordnance Datum) or thereabout at its western boundary and -35.4m (minus thirty five point four metres) OD (Ordnance Datum) or thereabouts at its eastern boundary, and the lower surface of the stratum of the sub-soil is at a level equivalent to -53.6m (minus fifty three point six metres) OD (Ordnance Datum) or thereabout at its western boundary and -53.3m (minus fifty three point three metres) OD (Ordnance Datum) or thereabouts at its eastern boundary.	236 - London Borough of Southwark	TGL340140, TGL558025
GRECT/2157	327.3 square metres of a stratum of subsoil below public road, footways and grassed area (Redriff Road, B205) where the upper surface of the stratum of the sub-soil is at a level equivalent to -35.4m (minus thirty five point four metres) OD (Ordnance Datum) or thereabout at its western boundary and -35.4m (minus thirty five point four metres) OD (Ordnance Datum) or thereabouts at its eastern boundary, and the lower surface of the stratum of the sub-soil is at a level equivalent to -53.3m (minus fifty three point three metres) OD (Ordnance Datum) or thereabout at its western boundary and -53.2m (minus fifty three point two metres) OD (Ordnance Datum) or thereabouts at its eastern boundary.	237 - London Borough of Southwark	TGL136102
GRECT/2158	96.1 square metres of a stratum of subsoil below Dockers' shelter (Redriff Road, B205) where the upper surface of the stratum of the sub-soil is at a level equivalent to -35.4m (minus thirty five point four metres) OD (Ordnance Datum) or thereabout at its western boundary and -35.4m (minus thirty five point four metres) OD (Ordnance Datum) or thereabouts at its eastern boundary, and the lower surface of the stratum of the sub-soil is at a level equivalent to -53.3m (minus fifty three point three metres) OD (Ordnance Datum) or thereabout at its western boundary and -53.2m (minus fifty three point two metres) OD (Ordnance Datum) or thereabouts at its eastern boundary.	238 - London Borough of Southwark	Unregistered
GRECT/2159	71 square metres of a stratum of subsoil below grassed area (Redriff Road, B205) where the upper surface of the stratum of the sub-soil is at a level equivalent to -35.4m (minus thirty five point four metres) OD (Ordnance Datum) or thereabout at its western boundary and -35.3m (minus thirty five point three metres) OD (Ordnance Datum) or thereabouts at its eastern boundary, and the lower surface of the stratum of the sub-soil is at a level equivalent to -53.2m (minus fifty three point two metres) OD (Ordnance Datum) or thereabout at its western boundary and -53.2m (minus fifty three point two metres) OD (Ordnance Datum) or thereabouts at its eastern boundary.	239 - London Borough of Southwark	Unregistered
GRECT/2160	21.9 square metres of a stratum of subsoil below flats (Dunlin House) where the upper surface of the stratum of the sub-soil is at a level equivalent to -35.3m (minus thirty five point three metres) OD (Ordnance Datum) or thereabout at its western boundary and -35.3m (minus thirty five point three metres) OD (Ordnance Datum) or thereabouts at its eastern boundary, and the lower surface of the stratum of the sub-soil is at a level equivalent to -53.2m (minus fifty three point two metres) OD (Ordnance Datum) or thereabout at its western boundary and -53.2m (minus fifty three point two metres) OD (Ordnance Datum) or thereabouts at its eastern boundary.	241 - London Borough of Southwark	SGL308140, TGL78806
GRECT/2161	1334.7 square metres of a stratum of subsoil below Osprey Estate and car park (Tawny Way) where the upper surface of the stratum of the sub-soil is at a level equivalent to -35.4m (minus thirty five point four metres) OD (Ordnance Datum) or thereabout at its western boundary and -35.2m (minus thirty five point two metres) OD (Ordnance Datum) or thereabouts at its eastern boundary, and the lower surface of the stratum of the sub-soil is at a level equivalent to -53.2m (minus fifty three point two metres) OD (Ordnance Datum) or thereabout at its western boundary and -53m	240 - London Borough of Southwark	SGL308140

	(minus fifty three metres) OD (Ordnance Datum) or thereabouts at its eastern boundary.		
GRECT/2162	66.8 square metres of a stratum of subsoil below car park and footways (Worgan Street) where the upper surface of the stratum of the sub-soil is at a level equivalent to -35.2m (minus thirty five point two metres) OD (Ordnance Datum) or thereabout at its western boundary and -35.2m (minus thirty five point two metres) OD (Ordnance Datum) or thereabouts at its eastern boundary, and the lower surface of the stratum of the sub-soil is at a level equivalent to -53m (minus fifty three metres) OD (Ordnance Datum) or thereabout at its western boundary and -53m (minus fifty three metres) OD (Ordnance Datum) or thereabouts at its eastern boundary.	242 - London Borough of Southwark	TGL118165, TGL124151, TGL131415, TGL137512
GRECT/2164	189.3 square metres of a stratum of subsoil below public footways (Cunard Walk) where the upper surface of the stratum of the sub-soil is at a level equivalent to -35.1m (minus thirty five point one metres) OD (Ordnance Datum) or thereabout at its western boundary and -35m (minus thirty five metres) OD (Ordnance Datum) or thereabouts at its eastern boundary, and the lower surface of the stratum of the sub-soil is at a level equivalent to -52.9m (minus fifty two point nine metres) OD (Ordnance Datum) or thereabout at its western boundary and -52.8m (minus fifty two point eight metres) OD (Ordnance Datum) or thereabouts at its eastern boundary.	245 - London Borough of Southwark	SGL341365
GRECT/2165	5.6 square metres of a stratum of subsoil below parking space (5 Mayflower Close) where the upper surface of the stratum of the sub-soil is at a level equivalent to -35m (minus thirty five metres) OD (Ordnance Datum) or thereabout at its western boundary and -35m (minus thirty five metres) OD (Ordnance Datum) or thereabouts at its eastern boundary, and the lower surface of the stratum of the sub-soil is at a level equivalent to -52.9m (minus fifty two point nine metres) OD (Ordnance Datum) or thereabout at its western boundary and -52.9m (minus fifty two point nine metres) OD (Ordnance Datum) or thereabouts at its eastern boundary.	246 - London Borough of Southwark	TGL4069, SGL476905
GRECT/2166	34.9 square metres of a stratum of subsoil below house and garden (51, Cunard Walk) where the upper surface of the stratum of the sub-soil is at a level equivalent to -35m (minus thirty five metres) OD (Ordnance Datum) or thereabout at its western boundary and -35m (minus thirty five metres) OD (Ordnance Datum) or thereabouts at its eastern boundary, and the lower surface of the stratum of the sub-soil is at a level equivalent to -52.9m (minus fifty two point nine metres) OD (Ordnance Datum) or thereabout at its western boundary and -52.9m (minus fifty two point nine metres) OD (Ordnance Datum) or thereabouts at its eastern boundary.	249 - London Borough of Southwark	TGL4070, SGL476905
GRECT/2167	90.5 square metres of a stratum of subsoil below house and garden (49, Cunard Walk) where the upper surface of the stratum of the sub-soil is at a level equivalent to -35m (minus thirty five metres) OD (Ordnance Datum) or thereabout at its western boundary and -35m (minus thirty five metres) OD (Ordnance Datum) or thereabouts at its eastern boundary, and the lower surface of the stratum of the sub-soil is at a level equivalent to -52.9m (minus fifty two point nine metres) OD (Ordnance Datum) or thereabout at its western boundary and -52.9m (minus fifty two point nine metres) OD (Ordnance Datum) or thereabouts at its eastern boundary.	251 - London Borough of Southwark	TGL3350, SGL476905
GRECT/2168	44.9 square metres of a stratum of subsoil below hardstanding (Cunard Walk) where the upper surface of the stratum of the sub-soil is at a level equivalent to -35m (minus thirty five metres) OD (Ordnance Datum) or thereabout at its western boundary and -35m (minus thirty five metres) OD (Ordnance Datum) or thereabouts at its eastern boundary, and the lower surface of the stratum of the sub-soil is at a level equivalent to -52.9m (minus fifty two point nine metres) OD (Ordnance Datum) or thereabout at its western	254 - London Borough of Southwark	TGL115357

	boundary and -52.9m (minus fifty two point nine metres) OD (Ordnance Datum) or thereabouts at its eastern boundary.		
GRECT/2169	13.3 square metres of a stratum of subsoil below house and garden (5, Mayflower Close) where the upper surface of the stratum of the sub-soil is at a level equivalent to -35m (minus thirty five metres) OD (Ordnance Datum) or thereabout at its western boundary and -35m (minus thirty five metres) OD (Ordnance Datum) or thereabouts at its eastern boundary, and the lower surface of the stratum of the sub-soil is at a level equivalent to -52.9m (minus fifty two point nine metres) OD (Ordnance Datum) or thereabout at its western boundary and -52.9m (minus fifty two point nine metres) OD (Ordnance Datum) or thereabouts at its eastern boundary.	252 - London Borough of Southwark	TGL4069, SGL476905
GRECT/2170	53.5 square metres of a stratum of subsoil below house and garden (47, Cunard Walk) where the upper surface of the stratum of the sub-soil is at a level equivalent to -35m (minus thirty five metres) OD (Ordnance Datum) or thereabout at its western boundary and -35m (minus thirty five metres) OD (Ordnance Datum) or thereabouts at its eastern boundary, and the lower surface of the stratum of the sub-soil is at a level equivalent to -52.8m (minus fifty two point eight metres) OD (Ordnance Datum) or thereabout at its western boundary and -52.8m (minus fifty two point eight metres) OD (Ordnance Datum) or thereabouts at its eastern boundary.	253 - London Borough of Southwark	TGL3088, SGL476905
GRECT/2172	89.6 square metres of a stratum of subsoil below house and garden (45, Cunard Walk) where the upper surface of the stratum of the sub-soil is at a level equivalent to -35m (minus thirty five metres) OD (Ordnance Datum) or thereabout at its western boundary and -34.9m (minus thirty four point nine metres) OD (Ordnance Datum) or thereabouts at its eastern boundary, and the lower surface of the stratum of the sub-soil is at a level equivalent to -52.8m (minus fifty two point eight metres) OD (Ordnance Datum) or thereabout at its western boundary and -52.8m (minus fifty two point eight metres) OD (Ordnance Datum) or thereabouts at its eastern boundary.	255 - London Borough of Southwark	TGL3295, SGL476905
GRECT/2173	2.5 square metres of a stratum of subsoil below house (45, Cunard Walk) where the upper surface of the stratum of the sub-soil is at a level equivalent to -35m (minus thirty five metres) OD (Ordnance Datum) or thereabout at its western boundary and -35m (minus thirty five metres) OD (Ordnance Datum) or thereabouts at its eastern boundary, and the lower surface of the stratum of the sub-soil is at a level equivalent to -52.8m (minus fifty two point eight metres) OD (Ordnance Datum) or thereabout at its western boundary and -52.8m (minus fifty two point eight metres) OD (Ordnance Datum) or thereabouts at its eastern boundary.	255a - London Borough of Southwark	TGL3295, SGL476905
GRECT/2174	12 square metres of a stratum of subsoil below access and car park (41 to 47, Cunard Walk) where the upper surface of the stratum of the sub-soil is at a level equivalent to -35m (minus thirty five metres) OD (Ordnance Datum) or thereabout at its western boundary and -34.9m (minus thirty four point nine metres) OD (Ordnance Datum) or thereabouts at its eastern boundary, and the lower surface of the stratum of the sub-soil is at a level equivalent to -52.8m (minus fifty two point eight metres) OD (Ordnance Datum) or thereabout at its western boundary and -52.8m (minus fifty two point eight metres) OD (Ordnance Datum) or thereabouts at its eastern boundary.	256 - London Borough of Southwark	TGL115357
GRECT/2175	1.2 square metres of a stratum of subsoil below house (43, Cunard Walk) where the upper surface of the stratum of the sub-soil is at a level equivalent to -34.9m (minus thirty four point nine metres) OD (Ordnance Datum) or thereabout at its western boundary and -34.9m (minus thirty four point nine metres) OD (Ordnance Datum) or thereabouts at its eastern boundary, and the lower surface of the stratum of the sub-soil is at a level equivalent to -52.8m (minus fifty two point eight metres) OD (Ordnance Datum) or thereabout at its western boundary and -52.8m (minus fifty two point eight metres) OD (Ordnance Datum) or thereabouts at its eastern boundary.	258 - London Borough of Southwark	TGL7649, SGL476905

GRECT/2176	191.4 square metres of a stratum of subsoil below public footways (Cunard Walk) where the upper surface of the stratum of the sub-soil is at a level equivalent to -35m (minus thirty five metres) OD (Ordnance Datum) or thereabout at its western boundary and -34.9m (minus thirty four point nine metres) OD (Ordnance Datum) or thereabouts at its eastern boundary, and the lower surface of the stratum of the sub-soil is at a level equivalent to -52.8m (minus fifty two point eight metres) OD (Ordnance Datum) or thereabout at its western boundary and -52.8m (minus fifty two point eight metres) OD (Ordnance Datum) or thereabouts at its eastern boundary.	245 - London Borough of Southwark	SGL341365
GRECT/2177	10.4 square metres of a stratum of subsoil below garden (43, Plough Way) where the upper surface of the stratum of the sub-soil is at a level equivalent to -34.9m (minus thirty four point nine metres) OD (Ordnance Datum) or thereabout at its western boundary and -34.9m (minus thirty four point nine metres) OD (Ordnance Datum) or thereabouts at its eastern boundary, and the lower surface of the stratum of the sub-soil is at a level equivalent to -52.8m (minus fifty two point eight metres) OD (Ordnance Datum) or thereabout at its western boundary and -52.8m (minus fifty two point eight metres) OD (Ordnance Datum) or thereabouts at its eastern boundary.	262 - London Borough of Southwark	SGL307609
GRECT/2178	38.7 square metres of a stratum of subsoil below garden (45, Plough Way) where the upper surface of the stratum of the sub-soil is at a level equivalent to -34.9m (minus thirty four point nine metres) OD (Ordnance Datum) or thereabout at its western boundary and -34.9m (minus thirty four point nine metres) OD (Ordnance Datum) or thereabouts at its eastern boundary, and the lower surface of the stratum of the sub-soil is at a level equivalent to -52.8m (minus fifty two point eight metres) OD (Ordnance Datum) or thereabout at its western boundary and -52.8m (minus fifty two point eight metres) OD (Ordnance Datum) or thereabouts at its eastern boundary.	263 - London Borough of Southwark	SGL154804
GRECT/2179	64.7 square metres of a stratum of subsoil below garden (47, Plough Way) where the upper surface of the stratum of the sub-soil is at a level equivalent to -35m (minus thirty five metres) OD (Ordnance Datum) or thereabout at its western boundary and -34.9m (minus thirty four point nine metres) OD (Ordnance Datum) or thereabouts at its eastern boundary, and the lower surface of the stratum of the sub-soil is at a level equivalent to -52.8m (minus fifty two point eight metres) OD (Ordnance Datum) or thereabout at its western boundary and -52.8m (minus fifty two point eight metres) OD (Ordnance Datum) or thereabouts at its eastern boundary.	264 - London Borough of Southwark	SGL482984
GRECT/2180	96.1 square metres of a stratum of subsoil below house and garden (49, Plough Way) where the upper surface of the stratum of the sub-soil is at a level equivalent to -34.9m (minus thirty four point nine metres) OD (Ordnance Datum) or thereabout at its western boundary and -34.9m (minus thirty four point nine metres) OD (Ordnance Datum) or thereabouts at its eastern boundary, and the lower surface of the stratum of the sub-soil is at a level equivalent to -52.8m (minus fifty two point eight metres) OD (Ordnance Datum) or thereabout at its western boundary and -52.8m (minus fifty two point eight metres) OD (Ordnance Datum) or thereabouts at its eastern boundary.	265 - London Borough of Southwark	TGL199889
GRECT/2181	68.1 square metres of a stratum of subsoil below garden (51, Plough Way) where the upper surface of the stratum of the sub-soil is at a level equivalent to -34.9m (minus thirty four point nine metres) OD (Ordnance Datum) or thereabout at its western boundary and -34.9m (minus thirty four point nine metres) OD (Ordnance Datum) or thereabouts at its eastern boundary, and the lower surface of the stratum of the sub-soil is at a level equivalent to -52.8m (minus fifty two point eight metres) OD (Ordnance Datum) or thereabout at its western boundary and -52.7m (minus fifty two point seven metres) OD (Ordnance Datum) or thereabouts	266 - London Borough of Southwark	SGL489957

	at its eastern boundary.		
GRECT/2182	100 square metres of a stratum of subsoil below garden (53, Plough Way) where the upper surface of the stratum of the sub-soil is at a level equivalent to -34.9m (minus thirty four point nine metres) OD (Ordnance Datum) or thereabout at its western boundary and -34.9m (minus thirty four point nine metres) OD (Ordnance Datum) or thereabouts at its eastern boundary, and the lower surface of the stratum of the sub-soil is at a level equivalent to -52.8m (minus fifty two point eight metres) OD (Ordnance Datum) or thereabout at its western boundary and -52.7m (minus fifty two point seven metres) OD (Ordnance Datum) or thereabouts at its eastern boundary.	267 - London Borough of Southwark	SGL485084
GRECT/2183	3.3 square metres of a stratum of subsoil below garden (57, Plough Way) where the upper surface of the stratum of the sub-soil is at a level equivalent to -34.9m (minus thirty four point nine metres) OD (Ordnance Datum) or thereabout at its western boundary and -34.9m (minus thirty four point nine metres) OD (Ordnance Datum) or thereabouts at its eastern boundary, and the lower surface of the stratum of the sub-soil is at a level equivalent to -52.8m (minus fifty two point eight metres) OD (Ordnance Datum) or thereabout at its western boundary and -52.8m (minus fifty two point eight metres) OD (Ordnance Datum) or thereabouts at its eastern boundary.	269 - London Borough of Southwark	SGL483991
GRECT/2184	133.1 square metres of a stratum of subsoil below house and garden (55, Plough Way) where the upper surface of the stratum of the sub-soil is at a level equivalent to -34.9m (minus thirty four point nine metres) OD (Ordnance Datum) or thereabout at its western boundary and -34.9m (minus thirty four point nine metres) OD (Ordnance Datum) or thereabouts at its eastern boundary, and the lower surface of the stratum of the sub-soil is at a level equivalent to -52.8m (minus fifty two point eight metres) OD (Ordnance Datum) or thereabout at its western boundary and -52.7m (minus fifty two point seven metres) OD (Ordnance Datum) or thereabouts at its eastern boundary.	268 - London Borough of Southwark	TGL157847
GRECT/2185	116.4 square metres of a stratum of subsoil below house and garden (57, Plough Way) where the upper surface of the stratum of the sub-soil is at a level equivalent to -34.9m (minus thirty four point nine metres) OD (Ordnance Datum) or thereabout at its western boundary and -34.9m (minus thirty four point nine metres) OD (Ordnance Datum) or thereabouts at its eastern boundary, and the lower surface of the stratum of the sub-soil is at a level equivalent to -52.8m (minus fifty two point eight metres) OD (Ordnance Datum) or thereabout at its western boundary and -52.7m (minus fifty two point seven metres) OD (Ordnance Datum) or thereabouts at its eastern boundary.	269 - London Borough of Southwark	SGL151504
GRECT/2186	83.7 square metres of a stratum of subsoil below house and garden (59, Plough Way) where the upper surface of the stratum of the sub-soil is at a level equivalent to -34.9m (minus thirty four point nine metres) OD (Ordnance Datum) or thereabout at its western boundary and -34.8m (minus thirty four point eight metres) OD (Ordnance Datum) or thereabouts at its eastern boundary, and the lower surface of the stratum of the sub-soil is at a level equivalent to -52.7m (minus fifty two point seven metres) OD (Ordnance Datum) or thereabout at its western boundary and -52.7m (minus fifty two point seven metres) OD (Ordnance Datum) or thereabouts at its eastern boundary.	270 - London Borough of Southwark	SGL138091
GRECT/2187	48.3 square metres of a stratum of subsoil below house and garden (61, Plough Way) where the upper surface of the stratum of the sub-soil is at a level equivalent to -34.9m (minus thirty four point nine metres) OD (Ordnance Datum) or thereabout at its western boundary and -34.8m (minus thirty four point eight metres) OD (Ordnance Datum) or thereabouts at its eastern boundary, and the lower surface of the stratum of the sub-soil is at a level equivalent to -52.7m (minus fifty two point seven metres) OD (Ordnance Datum) or thereabout at its western boundary and -52.7m (minus	271 - London Borough of Southwark	SGL194163

	fifty two point seven metres) OD (Ordnance Datum) or thereabouts at its eastern boundary.		
GRECT/2188	15.7 square metres of a stratum of subsoil below house and garden (63, Plough Way) where the upper surface of the stratum of the sub-soil is at a level equivalent to -34.8m (minus thirty four point eight metres) OD (Ordnance Datum) or thereabout at its western boundary and -34.8m (minus thirty four point eight metres) OD (Ordnance Datum) or thereabouts at its eastern boundary, and the lower surface of the stratum of the sub-soil is at a level equivalent to -52.7m (minus fifty two point seven metres) OD (Ordnance Datum) or thereabout at its western boundary and -52.7m (minus fifty two point seven metres) OD (Ordnance Datum) or thereabouts at its eastern boundary.	272 - London Borough of Southwark	LN196908
GRECT/2189	332.2 square metres of a stratum of subsoil below public road and footways (Plough Way, B206) where the upper surface of the stratum of the sub-soil is at a level equivalent to -34.9m (minus thirty four point nine metres) OD (Ordnance Datum) or thereabout at its western boundary and -34.8m (minus thirty four point eight metres) OD (Ordnance Datum) or thereabouts at its eastern boundary, and the lower surface of the stratum of the sub-soil is at a level equivalent to -52.7m (minus fifty two point seven metres) OD (Ordnance Datum) or thereabout at its western boundary and -52.7m (minus fifty two point seven metres) OD (Ordnance Datum) or thereabouts at its eastern boundary.	275 - London Borough of Southwark	Unregistered
GRECT/2190	781.6 square metres of a stratum of subsoil below flats, car park, gardens and bin store (Jura House) where the upper surface of the stratum of the sub-soil is at a level equivalent to -34.8m (minus thirty four point eight metres) OD (Ordnance Datum) or thereabout at its western boundary and -34.7m (minus thirty four point seven metres) OD (Ordnance Datum) or thereabouts at its eastern boundary, and the lower surface of the stratum of the sub-soil is at a level equivalent to -52.7m (minus fifty two point seven metres) OD (Ordnance Datum) or thereabout at its western boundary and -52.6m (minus fifty two point six metres) OD (Ordnance Datum) or thereabouts at its eastern boundary.	276 - London Borough of Southwark	SGL29153
GRECT/2193	302.1 square metres of a stratum of subsoil below car park and gardens (Chilton Grove) and electricity substation (93353) where the upper surface of the stratum of the sub-soil is at a level equivalent to -34.7m (minus thirty four point seven metres) OD (Ordnance Datum) or thereabout at its western boundary and -34.6m (minus thirty four point six metres) OD (Ordnance Datum) or thereabouts at its eastern boundary, and the lower surface of the stratum of the sub-soil is at a level equivalent to -52.6m (minus fifty two point six metres) OD (Ordnance Datum) or thereabout at its western boundary and -52.5m (minus fifty two point five metres) OD (Ordnance Datum) or thereabouts at its eastern boundary.	279 - London Borough of Southwark	SGL373755
GRECT/2194	255.6 square metres of a stratum of subsoil below public road and footways (Chilton Grove) where the upper surface of the stratum of the sub-soil is at a level equivalent to -34.6m (minus thirty four point six metres) OD (Ordnance Datum) or thereabout at its western boundary and -34.6m (minus thirty four point six metres) OD (Ordnance Datum) or thereabouts at its eastern boundary, and the lower surface of the stratum of the sub-soil is at a level equivalent to -52.5m (minus fifty two point five metres) OD (Ordnance Datum) or thereabout at its western boundary and -52.5m (minus fifty two point five metres) OD (Ordnance Datum) or thereabouts at its eastern boundary.	281 - London Borough of Southwark	Unregistered
GRECT/2195	0.7 square metres of a stratum of subsoil below public road and footway (Chilton Grove) where the upper surface of the stratum of the sub-soil is at a level equivalent to -34.6m (minus thirty four point six metres) OD (Ordnance Datum) or thereabout at its western boundary and -34.6m (minus thirty four point six metres) OD (Ordnance Datum) or thereabouts at its eastern boundary, and	1 - London Borough of Lewisham	Unregistered

	the lower surface of the stratum of the sub-soil is at a level equivalent to -52.5m (minus fifty two point five metres) OD (Ordnance Datum) or thereabout at its western boundary and -52.5m (minus fifty two point five metres) OD (Ordnance Datum) or thereabouts at its eastern boundary.		
GRECT/2196	0.1 square metres of a stratum of subsoil below flats (108 to 136, Chilton Grove) where the upper surface of the stratum of the sub-soil is at a level equivalent to -34.6m (minus thirty four point six metres) OD (Ordnance Datum) or thereabout at its western boundary and -34.6m (minus thirty four point six metres) OD (Ordnance Datum) or thereabouts at its eastern boundary, and the lower surface of the stratum of the sub-soil is at a level equivalent to -52.5m (minus fifty two point five metres) OD (Ordnance Datum) or thereabout at its western boundary and -52.4m (minus fifty two point four metres) OD (Ordnance Datum) or thereabouts at its eastern boundary.	284 - London Borough of Southwark	LN60506
GRECT/2197	0.3 square metres of a stratum of subsoil below flats (108 to 136, Chilton Grove) where the upper surface of the stratum of the sub-soil is at a level equivalent to -34.6m (minus thirty four point six metres) OD (Ordnance Datum) or thereabout at its western boundary and -34.5m (minus thirty four point five metres) OD (Ordnance Datum) or thereabouts at its eastern boundary, and the lower surface of the stratum of the sub-soil is at a level equivalent to -52.5m (minus fifty two point five metres) OD (Ordnance Datum) or thereabout at its western boundary and -52.4m (minus fifty two point four metres) OD (Ordnance Datum) or thereabouts at its eastern boundary.	284 - London Borough of Southwark	LN60506
GRECT/2198	171.5 square metres of a stratum of subsoil below hardstanding and grassed area (108 to 136, Chilton Grove) where the upper surface of the stratum of the sub-soil is at a level equivalent to -34.6m (minus thirty four point six metres) OD (Ordnance Datum) or thereabout at its western boundary and -34.6m (minus thirty four point six metres) OD (Ordnance Datum) or thereabouts at its eastern boundary, and the lower surface of the stratum of the sub-soil is at a level equivalent to -52.5m (minus fifty two point five metres) OD (Ordnance Datum) or thereabout at its western boundary and -52.5m (minus fifty two point five metres) OD (Ordnance Datum) or thereabouts at its eastern boundary.	282 - London Borough of Southwark	LN60506, TGL23580
GRECT/2199	194.2 square metres of a stratum of subsoil below public road and footway (Croft Street) where the upper surface of the stratum of the sub-soil is at a level equivalent to -34.6m (minus thirty four point six metres) OD (Ordnance Datum) or thereabout at its western boundary and -34.5m (minus thirty four point five metres) OD (Ordnance Datum) or thereabouts at its eastern boundary, and the lower surface of the stratum of the sub-soil is at a level equivalent to -52.5m (minus fifty two point five metres) OD (Ordnance Datum) or thereabout at its western boundary and -52.4m (minus fifty two point four metres) OD (Ordnance Datum) or thereabouts at its eastern boundary.	285 - London Borough of Southwark	Unregistered
GRECT/2200	156 square metres of a stratum of subsoil below public road and footway (Croft Street) where the upper surface of the stratum of the sub-soil is at a level equivalent to -34.6m (minus thirty four point six metres) OD (Ordnance Datum) or thereabout at its western boundary and -34.5m (minus thirty four point five metres) OD (Ordnance Datum) or thereabouts at its eastern boundary, and the lower surface of the stratum of the sub-soil is at a level equivalent to -52.5m (minus fifty two point five metres) OD (Ordnance Datum) or thereabout at its western boundary and -52.4m (minus fifty two point four metres) OD (Ordnance Datum) or thereabouts at its eastern boundary.	3 - London Borough of Lewisham	Unregistered
GRECT/2201	117.1 square metres of a stratum of subsoil below hardstanding (Earl Pumping Station) where the upper surface of the stratum of the sub-soil is at a level equivalent to -34.6m (minus thirty four	5 - London Borough of Lewisham	LN30618

	point six metres) OD (Ordnance Datum) or thereabout at its western boundary and -34.5m (minus thirty four point five metres) OD (Ordnance Datum) or thereabouts at its eastern boundary, and the lower surface of the stratum of the sub-soil is at a level equivalent to -52.4m (minus fifty two point four metres) OD (Ordnance Datum) or thereabout at its western boundary and -52.4m (minus fifty two point four metres) OD (Ordnance Datum) or thereabouts at its eastern boundary.		
GRECT/2202	22.5 square metres of a stratum of subsoil below public road (Croft Street) where the upper surface of the stratum of the sub-soil is at a level equivalent to -34.5m (minus thirty four point five metres) OD (Ordnance Datum) or thereabout at its western boundary and -34.5m (minus thirty four point five metres) OD (Ordnance Datum) or thereabouts at its eastern boundary, and the lower surface of the stratum of the sub-soil is at a level equivalent to -52.4m (minus fifty two point four metres) OD (Ordnance Datum) or thereabout at its western boundary and -52.4m (minus fifty two point four metres) OD (Ordnance Datum) or thereabouts at its eastern boundary.	286 - London Borough of Southwark	Unregistered
GRECT/2203	77.4 square metres of a stratum of subsoil below public road and footway (Croft Street) where the upper surface of the stratum of the sub-soil is at a level equivalent to -34.5m (minus thirty four point five metres) OD (Ordnance Datum) or thereabout at its western boundary and -34.5m (minus thirty four point five metres) OD (Ordnance Datum) or thereabouts at its eastern boundary, and the lower surface of the stratum of the sub-soil is at a level equivalent to -52.4m (minus fifty two point four metres) OD (Ordnance Datum) or thereabout at its western boundary and -52.3m (minus fifty two point three metres) OD (Ordnance Datum) or thereabouts at its eastern boundary.	10 - London Borough of Lewisham	Unregistered
EARPS/2001	26 square metres of a stratum of subsoil below hardstanding (Earl Pumping Station) where the upper surface of the stratum of the sub-soil is at a level equivalent to -34.7m (minus thirty four point seven metres) OD (Ordnance Datum) or thereabout at its western boundary and -34.7m (minus thirty four point seven metres) OD (Ordnance Datum) or thereabouts at its eastern boundary, and the lower surface of the stratum of the sub-soil is at a level equivalent to -52m (minus fifty two metres) OD (Ordnance Datum) or thereabout at its western boundary and -52m (minus fifty two metres) OD (Ordnance Datum) or thereabouts at its eastern boundary.	11 - London Borough of Lewisham	LN30618
EARPS/2008	177.5 square metres of a stratum of subsoil below warehouse and car park (64 to 72, Croft Street) where the upper surface of the stratum of the sub-soil is at a level equivalent to -34.7m (minus thirty four point seven metres) OD (Ordnance Datum) or thereabout at its western boundary and -34.6m (minus thirty four point six metres) OD (Ordnance Datum) or thereabouts at its eastern boundary, and the lower surface of the stratum of the sub-soil is at a level equivalent to -52.2m (minus fifty two point two metres) OD (Ordnance Datum) or thereabout at its western boundary and -52.1m (minus fifty two point one metres) OD (Ordnance Datum) or thereabouts at its eastern boundary.	18 - London Borough of Lewisham	TGL272294
GRECT/2205	81.8 square metres of a stratum of subsoil below house and garden (60, Croft Street) where the upper surface of the stratum of the sub-soil is at a level equivalent to -34.4m (minus thirty four point four metres) OD (Ordnance Datum) or thereabout at its western boundary and -34.4m (minus thirty four point four metres) OD (Ordnance Datum) or thereabouts at its eastern boundary, and the lower surface of the stratum of the sub-soil is at a level equivalent to -52.3m (minus fifty two point three metres) OD (Ordnance Datum) or thereabout at its western boundary and -52.3m (minus fifty two point three metres) OD (Ordnance Datum) or thereabouts at its eastern boundary.	27 - London Borough of Lewisham	SGL206194

GREC/2207	44.8 square metres of a stratum of subsoil below house and garden (56, Croft Street) where the upper surface of the stratum of the sub-soil is at a level equivalent to -34.4m (minus thirty four point four metres) OD (Ordnance Datum) or thereabout at its western boundary and -34.4m (minus thirty four point four metres) OD (Ordnance Datum) or thereabouts at its eastern boundary, and the lower surface of the stratum of the sub-soil is at a level equivalent to -52.3m (minus fifty two point three metres) OD (Ordnance Datum) or thereabout at its western boundary and -52.3m (minus fifty two point three metres) OD (Ordnance Datum) or thereabouts at its eastern boundary.	29 - London Borough of Lewisham	SGL206194
GREC/2208	24.8 square metres of a stratum of subsoil below house and garden (54, Croft Street) where the upper surface of the stratum of the sub-soil is at a level equivalent to -34.4m (minus thirty four point four metres) OD (Ordnance Datum) or thereabout at its western boundary and -34.4m (minus thirty four point four metres) OD (Ordnance Datum) or thereabouts at its eastern boundary, and the lower surface of the stratum of the sub-soil is at a level equivalent to -52.3m (minus fifty two point three metres) OD (Ordnance Datum) or thereabout at its western boundary and -52.2m (minus fifty two point two metres) OD (Ordnance Datum) or thereabouts at its eastern boundary.	30 - London Borough of Lewisham	SGL206194
GREC/2209	9.5 square metres of a stratum of subsoil below garden (52, Croft Street) where the upper surface of the stratum of the sub-soil is at a level equivalent to -34.4m (minus thirty four point four metres) OD (Ordnance Datum) or thereabout at its western boundary and -34.4m (minus thirty four point four metres) OD (Ordnance Datum) or thereabouts at its eastern boundary, and the lower surface of the stratum of the sub-soil is at a level equivalent to -52.2m (minus fifty two point two metres) OD (Ordnance Datum) or thereabout at its western boundary and -52.2m (minus fifty two point two metres) OD (Ordnance Datum) or thereabouts at its eastern boundary.	31 - London Borough of Lewisham	SGL499476
GREC/2210	0.1 square metres of a stratum of subsoil below garden (1, Woodcroft Mews) where the upper surface of the stratum of the sub-soil is at a level equivalent to -34.4m (minus thirty four point four metres) OD (Ordnance Datum) or thereabout at its western boundary and -34.4m (minus thirty four point four metres) OD (Ordnance Datum) or thereabouts at its eastern boundary, and the lower surface of the stratum of the sub-soil is at a level equivalent to -52.2m (minus fifty two point two metres) OD (Ordnance Datum) or thereabout at its western boundary and -52.2m (minus fifty two point two metres) OD (Ordnance Datum) or thereabouts at its eastern boundary.	32 - London Borough of Lewisham	TGL160895
GREC/2212	703.6 square metres of a stratum of subsoil below communal yard (Nyland Court) where the upper surface of the stratum of the sub-soil is at a level equivalent to -34.2m (minus thirty four point two metres) OD (Ordnance Datum) or thereabout at its western boundary and -34m (minus thirty four metres) OD (Ordnance Datum) or thereabouts at its eastern boundary, and the lower surface of the stratum of the sub-soil is at a level equivalent to -52m (minus fifty two metres) OD (Ordnance Datum) or thereabout at its western boundary and -51.9m (minus fifty one point nine metres) OD (Ordnance Datum) or thereabouts at its eastern boundary.	34 - London Borough of Lewisham	TGL269356
GREC/2326	0.1 square metres of a stratum of subsoil below house (6, Mayflower Close) where the upper surface of the stratum of the sub-soil is at a level equivalent to -35m (minus thirty five metres) OD (Ordnance Datum) or thereabout at its western boundary and -35m (minus thirty five metres) OD (Ordnance Datum) or thereabouts at its eastern boundary, and the lower surface of the stratum of the sub-soil is at a level equivalent to -52.9m (minus fifty two point nine metres) OD (Ordnance Datum) or thereabout at its western boundary and -52.9m (minus fifty two point nine metres) OD (Ordnance Datum) or thereabouts at its eastern boundary.	250 - London Borough of Southwark	TGL5529, SGL476905

	OD (Ordnance Datum) or thereabouts at its eastern boundary.		
GRECT/2372	18.2 square metres of a stratum of subsoil below Mandara Place and car park entrance (Yeoman Street) where the upper surface of the stratum of the sub-soil is at a level equivalent to -34.4m (minus thirty four point four metres) OD (Ordnance Datum) or thereabout at its western boundary and -34.4m (minus thirty four point four metres) OD (Ordnance Datum) or thereabouts at its eastern boundary, and the lower surface of the stratum of the sub-soil is at a level equivalent to -52.3m (minus fifty two point three metres) OD (Ordnance Datum) or thereabout at its western boundary and -52.2m (minus fifty two point two metres) OD (Ordnance Datum) or thereabouts at its eastern boundary.	25 - London Borough of Lewisham	TGL269356
GRECT/2373	13.3 square metres of a stratum of subsoil below parking space 83 (Cannon Wharf) where the upper surface of the stratum of the sub-soil is at a level equivalent to -34.4m (minus thirty four point four metres) OD (Ordnance Datum) or thereabout at its western boundary and -34.4m (minus thirty four point four metres) OD (Ordnance Datum) or thereabouts at its eastern boundary, and the lower surface of the stratum of the sub-soil is at a level equivalent to -52.2m (minus fifty two point two metres) OD (Ordnance Datum) or thereabout at its western boundary and -52.2m (minus fifty two point two metres) OD (Ordnance Datum) or thereabouts at its eastern boundary.	25 - London Borough of Lewisham	TGL269356, TGL517361
GRECT/2374	528.1 square metres of a stratum of subsoil below hardstanding and car park (Yeoman Street) where the upper surface of the stratum of the sub-soil is at a level equivalent to -34.4m (minus thirty four point four metres) OD (Ordnance Datum) or thereabout at its western boundary and -34.3m (minus thirty four point three metres) OD (Ordnance Datum) or thereabouts at its eastern boundary, and the lower surface of the stratum of the sub-soil is at a level equivalent to -52.3m (minus fifty two point three metres) OD (Ordnance Datum) or thereabout at its western boundary and -52.2m (minus fifty two point two metres) OD (Ordnance Datum) or thereabouts at its eastern boundary.	25 - London Borough of Lewisham	TGL269356
GRECT/2375	633.4 square metres of a stratum of subsoil below Chantrelle Court and Mandara Place (Yeoman Street) where the upper surface of the stratum of the sub-soil is at a level equivalent to -34.4m (minus thirty four point four metres) OD (Ordnance Datum) or thereabout at its western boundary and -34.3m (minus thirty four point three metres) OD (Ordnance Datum) or thereabouts at its eastern boundary, and the lower surface of the stratum of the sub-soil is at a level equivalent to -52.2m (minus fifty two point two metres) OD (Ordnance Datum) or thereabout at its western boundary and -52.1m (minus fifty two point one metres) OD (Ordnance Datum) or thereabouts at its eastern boundary.	25 - London Borough of Lewisham	TGL269356, TGL374100, TGL414183, TGL536228
GRECT/2376	9.1 square metres of a stratum of subsoil below Chantrelle Court (Yeoman Street) where the upper surface of the stratum of the sub-soil is at a level equivalent to -34.3m (minus thirty four point three metres) OD (Ordnance Datum) or thereabout at its western boundary and -34.3m (minus thirty four point three metres) OD (Ordnance Datum) or thereabouts at its eastern boundary, and the lower surface of the stratum of the sub-soil is at a level equivalent to -52.1m (minus fifty two point one metres) OD (Ordnance Datum) or thereabout at its western boundary and -52.1m (minus fifty two point one metres) OD (Ordnance Datum) or thereabouts at its eastern boundary.	25 - London Borough of Lewisham	TGL269356, TGL414183, TGL458585
GRECT/2377	39.7 square metres of a stratum of subsoil below Copenhagen Court (Yeoman Street) where the upper surface of the stratum of the sub-soil is at a level equivalent to -34.2m (minus thirty four point two metres) OD (Ordnance Datum) or thereabout at its western boundary and -34.2m (minus thirty four point two metres) OD (Ordnance Datum) or thereabouts at its eastern boundary, and the lower surface of the stratum of the sub-soil is at a level equivalent	25 - London Borough of Lewisham	TGL269356, TGL462904

	to -52.1m (minus fifty two point one metres) OD (Ordnance Datum) or thereabout at its western boundary and -52.1m (minus fifty two point one metres) OD (Ordnance Datum) or thereabouts at its eastern boundary.		
GRECT/2378	5.8 square metres of a stratum of subsoil below hardstanding, units and car park (Yeoman Street) where the upper surface of the stratum of the sub-soil is at a level equivalent to -34.2m (minus thirty four point two metres) OD (Ordnance Datum) or thereabout at its western boundary and -34.2m (minus thirty four point two metres) OD (Ordnance Datum) or thereabouts at its eastern boundary, and the lower surface of the stratum of the sub-soil is at a level equivalent to -52m (minus fifty two metres) OD (Ordnance Datum) or thereabout at its western boundary and -52m (minus fifty two metres) OD (Ordnance Datum) or thereabouts at its eastern boundary.	25 - London Borough of Lewisham	TGL269356, TGL433856
GRECT/2379	37.2 square metres of a stratum of subsoil below flats (Nyland Court) where the upper surface of the stratum of the sub-soil is at a level equivalent to -34.2m (minus thirty four point two metres) OD (Ordnance Datum) or thereabout at its western boundary and -34.2m (minus thirty four point two metres) OD (Ordnance Datum) or thereabouts at its eastern boundary, and the lower surface of the stratum of the sub-soil is at a level equivalent to -52m (minus fifty two metres) OD (Ordnance Datum) or thereabout at its western boundary and -52m (minus fifty two metres) OD (Ordnance Datum) or thereabouts at its eastern boundary.	25 - London Borough of Lewisham	TGL269356
GRECT/2380	59.9 square metres of a stratum of subsoil below private road (Naomi Street) where the upper surface of the stratum of the sub-soil is at a level equivalent to -34.2m (minus thirty four point two metres) OD (Ordnance Datum) or thereabout at its western boundary and -34.2m (minus thirty four point two metres) OD (Ordnance Datum) or thereabouts at its eastern boundary, and the lower surface of the stratum of the sub-soil is at a level equivalent to -52.1m (minus fifty two point one metres) OD (Ordnance Datum) or thereabout at its western boundary and -52m (minus fifty two metres) OD (Ordnance Datum) or thereabouts at its eastern boundary.	34 - London Borough of Lewisham	TGL269356
GRECT/2381	31.9 square metres of a stratum of subsoil below parking spaces (Cannon Wharf) where the upper surface of the stratum of the sub-soil is at a level equivalent to -34.2m (minus thirty four point two metres) OD (Ordnance Datum) or thereabout at its western boundary and -34.2m (minus thirty four point two metres) OD (Ordnance Datum) or thereabouts at its eastern boundary, and the lower surface of the stratum of the sub-soil is at a level equivalent to -52m (minus fifty two metres) OD (Ordnance Datum) or thereabout at its western boundary and -52m (minus fifty two metres) OD (Ordnance Datum) or thereabouts at its eastern boundary.	34 - London Borough of Lewisham	TGL269356, TGL522353
GRECT/2382	3.2 square metres of a stratum of subsoil below parking space 373 (Cannon Wharf) where the upper surface of the stratum of the sub-soil is at a level equivalent to -34.2m (minus thirty four point two metres) OD (Ordnance Datum) or thereabout at its western boundary and -34.2m (minus thirty four point two metres) OD (Ordnance Datum) or thereabouts at its eastern boundary, and the lower surface of the stratum of the sub-soil is at a level equivalent to -52m (minus fifty two metres) OD (Ordnance Datum) or thereabout at its western boundary and -52m (minus fifty two metres) OD (Ordnance Datum) or thereabouts at its eastern boundary.	34 - London Borough of Lewisham	TGL269356, TGL458028
GRECT/2383	303.5 square metres of a stratum of subsoil below flats (Nyland Court) where the upper surface of the stratum of the sub-soil is at a level equivalent to -34.2m (minus thirty four point two metres) OD (Ordnance Datum) or thereabout at its western boundary and -34.1m (minus thirty four point one metres) OD (Ordnance Datum)	34 - London Borough of Lewisham	TGL269356, TGL374095

	or thereabouts at its eastern boundary, and the lower surface of the stratum of the sub-soil is at a level equivalent to -52m (minus fifty two metres) OD (Ordnance Datum) or thereabout at its western boundary and -52m (minus fifty two metres) OD (Ordnance Datum) or thereabouts at its eastern boundary.		
GRECT/2384	88.3 square metres of a stratum of subsoil below flats (Nyland Court) where the upper surface of the stratum of the sub-soil is at a level equivalent to -34.1m (minus thirty four point one metres) OD (Ordnance Datum) or thereabout at its western boundary and -34m (minus thirty four metres) OD (Ordnance Datum) or thereabouts at its eastern boundary, and the lower surface of the stratum of the sub-soil is at a level equivalent to -51.9m (minus fifty one point nine metres) OD (Ordnance Datum) or thereabout at its western boundary and -51.9m (minus fifty one point nine metres) OD (Ordnance Datum) or thereabouts at its eastern boundary.	34 - London Borough of Lewisham	TGL269356
GRECT/2385	3 square metres of a stratum of subsoil below parking space 291 (Cannon Wharf) where the upper surface of the stratum of the sub-soil is at a level equivalent to -34.1m (minus thirty four point one metres) OD (Ordnance Datum) or thereabout at its western boundary and -34.1m (minus thirty four point one metres) OD (Ordnance Datum) or thereabouts at its eastern boundary, and the lower surface of the stratum of the sub-soil is at a level equivalent to -52m (minus fifty two metres) OD (Ordnance Datum) or thereabout at its western boundary and -52m (minus fifty two metres) OD (Ordnance Datum) or thereabouts at its eastern boundary.	34 - London Borough of Lewisham	TGL269356, TGL507141
GRECT/2386	5.2 square metres of a stratum of subsoil below parking space 279 (Cannon Wharf) where the upper surface of the stratum of the sub-soil is at a level equivalent to -34.1m (minus thirty four point one metres) OD (Ordnance Datum) or thereabout at its western boundary and -34.1m (minus thirty four point one metres) OD (Ordnance Datum) or thereabouts at its eastern boundary, and the lower surface of the stratum of the sub-soil is at a level equivalent to -51.9m (minus fifty one point nine metres) OD (Ordnance Datum) or thereabout at its western boundary and -51.9m (minus fifty one point nine metres) OD (Ordnance Datum) or thereabouts at its eastern boundary.	34 - London Borough of Lewisham	TGL269356, TGL507138
GRECT/2387	7 square metres of a stratum of subsoil below parking space 260 (Cannon Wharf) where the upper surface of the stratum of the sub-soil is at a level equivalent to -34.1m (minus thirty four point one metres) OD (Ordnance Datum) or thereabout at its western boundary and -34.1m (minus thirty four point one metres) OD (Ordnance Datum) or thereabouts at its eastern boundary, and the lower surface of the stratum of the sub-soil is at a level equivalent to -51.9m (minus fifty one point nine metres) OD (Ordnance Datum) or thereabout at its western boundary and -51.9m (minus fifty one point nine metres) OD (Ordnance Datum) or thereabouts at its eastern boundary.	34 - London Borough of Lewisham	TGL269356, TGL507371
GRECT/2389	27.2 square metres of a stratum of subsoil below part of house and garden (173, Lower Road) where the upper surface of the stratum of the sub-soil is at a level equivalent to -35.8m (minus thirty five point eight metres) OD (Ordnance Datum) or thereabout at its western boundary and -35.8m (minus thirty five point eight metres) OD (Ordnance Datum) or thereabouts at its eastern boundary, and the lower surface of the stratum of the sub-soil is at a level equivalent to -53.7m (minus fifty three point seven metres) OD (Ordnance Datum) or thereabout at its western boundary and -53.7m (minus fifty three point seven metres) OD (Ordnance Datum) or thereabouts at its eastern boundary.	228 - London Borough of Southwark	TGL551803
GRECT/2391	124.5 square metres of a stratum of subsoil below public road, footways and grassed area (Redriff Road, B205) where the upper surface of the stratum of the sub-soil is at a level equivalent to -35.4m (minus thirty five point four metres) OD (Ordnance Datum)	237 - London Borough of Southwark	Unregistered

	or thereabout at its western boundary and -35.3m (minus thirty five point three metres) OD (Ordnance Datum) or thereabouts at its eastern boundary, and the lower surface of the stratum of the sub-soil is at a level equivalent to -53.2m (minus fifty three point two metres) OD (Ordnance Datum) or thereabout at its western boundary and -53.2m (minus fifty three point two metres) OD (Ordnance Datum) or thereabouts at its eastern boundary.		
GRECT/2392	131.1 square metres of a stratum of subsoil below public road, footways and grassed area (Redriff Road, B205) where the upper surface of the stratum of the sub-soil is at a level equivalent to -35.4m (minus thirty five point four metres) OD (Ordnance Datum) or thereabout at its western boundary and -35.4m (minus thirty five point four metres) OD (Ordnance Datum) or thereabouts at its eastern boundary, and the lower surface of the stratum of the sub-soil is at a level equivalent to -53.3m (minus fifty three point three metres) OD (Ordnance Datum) or thereabout at its western boundary and -53.3m (minus fifty three point three metres) OD (Ordnance Datum) or thereabouts at its eastern boundary.	237 - London Borough of Southwark	TGL558025, TGL136102
GRECT/2393	89.8 square metres of a stratum of subsoil below car park, hardstanding, garages, playground, building, access and footways (1, Trident Street) where the upper surface of the stratum of the sub-soil is at a level equivalent to -35.1m (minus thirty five point one metres) OD (Ordnance Datum) or thereabout at its western boundary and -35m (minus thirty five metres) OD (Ordnance Datum) or thereabouts at its eastern boundary, and the lower surface of the stratum of the sub-soil is at a level equivalent to -52.9m (minus fifty two point nine metres) OD (Ordnance Datum) or thereabout at its western boundary and -52.9m (minus fifty two point nine metres) OD (Ordnance Datum) or thereabouts at its eastern boundary.	240 - London Borough of Southwark	SGL341365
GRECT/2394	195.5 square metres of a stratum of subsoil below car park, hardstanding, garages, playground, building, access and footways (1, Trident Street) where the upper surface of the stratum of the sub-soil is at a level equivalent to -35.2m (minus thirty five point two metres) OD (Ordnance Datum) or thereabout at its western boundary and -35.2m (minus thirty five point two metres) OD (Ordnance Datum) or thereabouts at its eastern boundary, and the lower surface of the stratum of the sub-soil is at a level equivalent to -53.1m (minus fifty three point one metres) OD (Ordnance Datum) or thereabout at its western boundary and -53m (minus fifty three metres) OD (Ordnance Datum) or thereabouts at its eastern boundary.	240 - London Borough of Southwark	TGL136102
GRECT/2396	522 square metres of a stratum of subsoil below car park, hardstanding, garages, playground, building, access and footways (1, Trident Street) where the upper surface of the stratum of the sub-soil is at a level equivalent to -35.1m (minus thirty five point one metres) OD (Ordnance Datum) or thereabout at its western boundary and -35m (minus thirty five metres) OD (Ordnance Datum) or thereabouts at its eastern boundary, and the lower surface of the stratum of the sub-soil is at a level equivalent to -53m (minus fifty three metres) OD (Ordnance Datum) or thereabout at its western boundary and -52.9m (minus fifty two point nine metres) OD (Ordnance Datum) or thereabouts at its eastern boundary.	240 - London Borough of Southwark	SGL308140
GRECT/2397	287.5 square metres of a stratum of subsoil below car park, hardstanding, garages, playground, building, access and footways (1, Trident Street) where the upper surface of the stratum of the sub-soil is at a level equivalent to -35.2m (minus thirty five point two metres) OD (Ordnance Datum) or thereabout at its western boundary and -35.1m (minus thirty five point one metres) OD (Ordnance Datum) or thereabouts at its eastern boundary, and the lower surface of the stratum of the sub-soil is at a level equivalent to -53m (minus fifty three metres) OD (Ordnance Datum) or	240 - London Borough of Southwark	SGL341365

	thereabout at its western boundary and -53m (minus fifty three metres) OD (Ordnance Datum) or thereabouts at its eastern boundary.		
GRECT/2398	0.3 square metres of a stratum of subsoil below parking space (49 Cunard Walk) where the upper surface of the stratum of the sub-soil is at a level equivalent to -35m (minus thirty five metres) OD (Ordnance Datum) or thereabout at its western boundary and -35m (minus thirty five metres) OD (Ordnance Datum) or thereabouts at its eastern boundary, and the lower surface of the stratum of the sub-soil is at a level equivalent to -52.9m (minus fifty two point nine metres) OD (Ordnance Datum) or thereabout at its western boundary and -52.9m (minus fifty two point nine metres) OD (Ordnance Datum) or thereabouts at its eastern boundary.	246 - London Borough of Southwark	TGL3350, SGL476905
GRECT/2399	2.6 square metres of a stratum of subsoil below access and car park (Mayflower Close) where the upper surface of the stratum of the sub-soil is at a level equivalent to -35m (minus thirty five metres) OD (Ordnance Datum) or thereabout at its western boundary and -35m (minus thirty five metres) OD (Ordnance Datum) or thereabouts at its eastern boundary, and the lower surface of the stratum of the sub-soil is at a level equivalent to -52.9m (minus fifty two point nine metres) OD (Ordnance Datum) or thereabout at its western boundary and -52.9m (minus fifty two point nine metres) OD (Ordnance Datum) or thereabouts at its eastern boundary.	246 - London Borough of Southwark	TGL115357
GRECT/2402	1 square metres of a stratum of subsoil below hardstanding adjacent to house (45, Cunard Walk) where the upper surface of the stratum of the sub-soil is at a level equivalent to -34.9m (minus thirty four point nine metres) OD (Ordnance Datum) or thereabout at its western boundary and -34.9m (minus thirty four point nine metres) OD (Ordnance Datum) or thereabouts at its eastern boundary, and the lower surface of the stratum of the sub-soil is at a level equivalent to -52.8m (minus fifty two point eight metres) OD (Ordnance Datum) or thereabout at its western boundary and -52.8m (minus fifty two point eight metres) OD (Ordnance Datum) or thereabouts at its eastern boundary.	255 - London Borough of Southwark	TGL115357
GRECT/2403	63.3 square metres of a stratum of subsoil below house and garden (51, Plough Way) where the upper surface of the stratum of the sub-soil is at a level equivalent to -34.9m (minus thirty four point nine metres) OD (Ordnance Datum) or thereabout at its western boundary and -34.9m (minus thirty four point nine metres) OD (Ordnance Datum) or thereabouts at its eastern boundary, and the lower surface of the stratum of the sub-soil is at a level equivalent to -52.8m (minus fifty two point eight metres) OD (Ordnance Datum) or thereabout at its western boundary and -52.8m (minus fifty two point eight metres) OD (Ordnance Datum) or thereabouts at its eastern boundary.	266 - London Borough of Southwark	SGL489957
GRECT/2404	57.2 square metres of a stratum of subsoil below garden (53, Plough Way) where the upper surface of the stratum of the sub-soil is at a level equivalent to -35m (minus thirty five metres) OD (Ordnance Datum) or thereabout at its western boundary and -34.9m (minus thirty four point nine metres) OD (Ordnance Datum) or thereabouts at its eastern boundary, and the lower surface of the stratum of the sub-soil is at a level equivalent to -58.2m (minus fifty eight point two metres) OD (Ordnance Datum) or thereabout at its western boundary and -52.8m (minus fifty two point eight metres) OD (Ordnance Datum) or thereabouts at its eastern boundary.	267 - London Borough of Southwark	SGL485084
GRECT/2405	1.4 square metres of a stratum of subsoil below gated grassland (Chilton Grove) where the upper surface of the stratum of the sub-soil is at a level equivalent to -34.7m (minus thirty four point seven metres) OD (Ordnance Datum) or thereabout at its western boundary and -34.6m (minus thirty four point six metres) OD (Ordnance Datum) or thereabouts at its eastern boundary, and the lower surface of the stratum of the sub-soil is at a level equivalent to -52.5m (minus fifty two point five metres) OD (Ordnance Datum)	279 - London Borough of Southwark	SGL242812

	or thereabout at its western boundary and -52.5m (minus fifty two point five metres) OD (Ordnance Datum) or thereabouts at its eastern boundary.		
GRECT/2410	0.4 square metres of a stratum of subsoil below house and garden (47, Cunard Walk) where the upper surface of the stratum of the sub-soil is at a level equivalent to -35m (minus thirty five metres) OD (Ordnance Datum) or thereabout at its western boundary and -35m (minus thirty five metres) OD (Ordnance Datum) or thereabouts at its eastern boundary, and the lower surface of the stratum of the sub-soil is at a level equivalent to -52.8m (minus fifty two point eight metres) OD (Ordnance Datum) or thereabout at its western boundary and -52.8m (minus fifty two point eight metres) OD (Ordnance Datum) or thereabouts at its eastern boundary.	252 - London Borough of Southwark	TGL3088, SGL476905
GRECT/2411	1.7 square metres of a stratum of subsoil below gated grassland (Chilton Grove) where the upper surface of the stratum of the sub-soil is at a level equivalent to -34.7m (minus thirty four point seven metres) OD (Ordnance Datum) or thereabout at its western boundary and -34.6m (minus thirty four point six metres) OD (Ordnance Datum) or thereabouts at its eastern boundary, and the lower surface of the stratum of the sub-soil is at a level equivalent to -52.5m (minus fifty two point five metres) OD (Ordnance Datum) or thereabout at its western boundary and -52.5m (minus fifty two point five metres) OD (Ordnance Datum) or thereabouts at its eastern boundary.	281 - London Borough of Southwark	SGL242812
GRECT/2412	19.6 square metres of a stratum of subsoil below car park, hardstanding, garages, playground, building, access and footways (1, Trident Street) where the upper surface of the stratum of the sub-soil is at a level equivalent to -35.1m (minus thirty five point one metres) OD (Ordnance Datum) or thereabout at its western boundary and -35.1m (minus thirty five point one metres) OD (Ordnance Datum) or thereabouts at its eastern boundary, and the lower surface of the stratum of the sub-soil is at a level equivalent to -53m (minus fifty three metres) OD (Ordnance Datum) or thereabout at its western boundary and -53m (minus fifty three metres) OD (Ordnance Datum) or thereabouts at its eastern boundary.	243 - London Borough of Southwark	SGL308140

EXECUTION PAGE

The Common seal of **Thames Water**)
Utilities Limited was affixed in the)
presence of:)



Jacqueline Sandison
Senior Legal Counsel

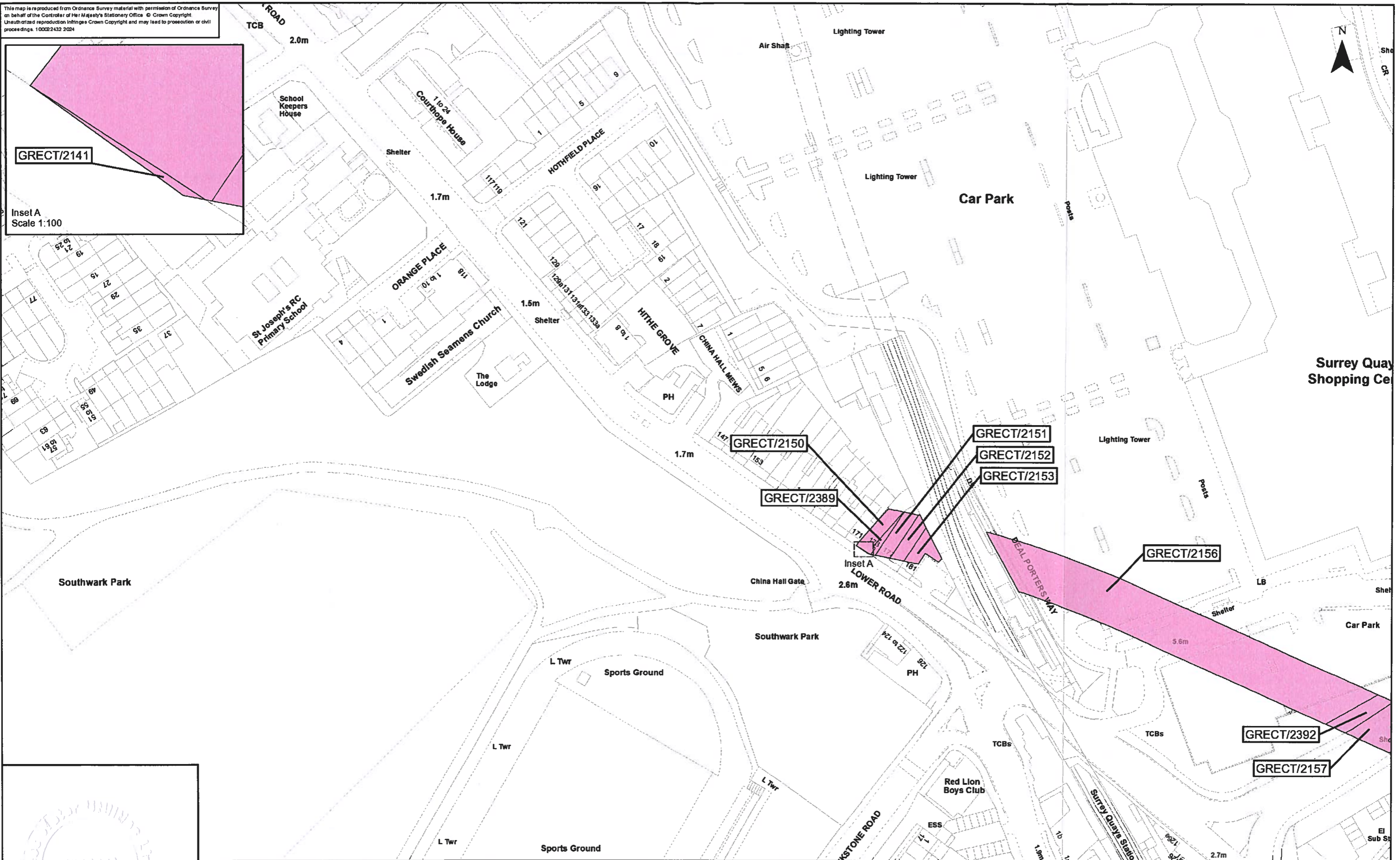
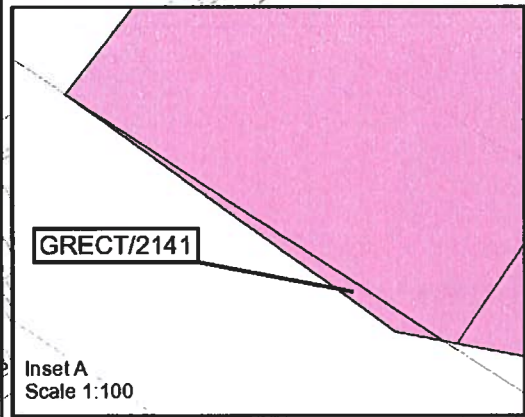
2024-1395

.....
Authorised Signatory

12 June 2024

.....
Date

This map is reproduced from Ordnance Survey material with permission of Ordnance Survey on behalf of the Controller of Her Majesty's Stationery Office. © Crown Copyright. Unauthorised reproduction infringes Crown Copyright and may lead to prosecution or civil proceedings. 10002432 2024



2024-1396

The Common seal of Thames Water Utilities Limited was affixed in the presence of

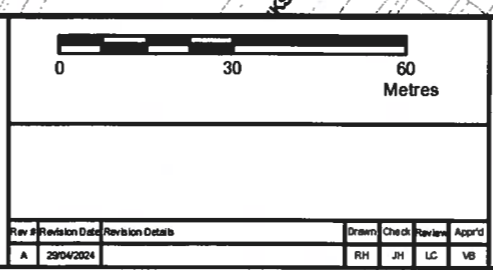
[Signature]
 Authorised Signatory

Dated: 12 June 2024

Key

Permanent Acquisition of Land

Jacqueline Sandison
 Senior Legal Coun



Tideway

Date: 29/04/2024

Scale at A3
1:1,250

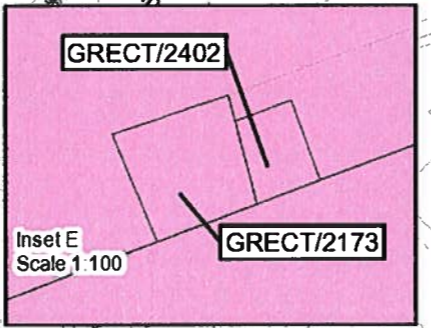
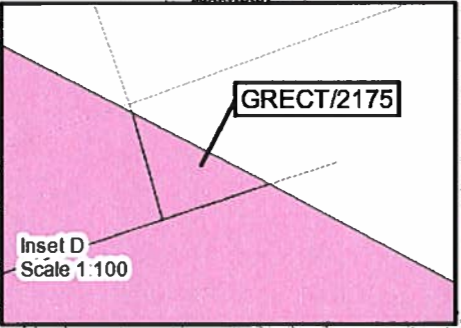
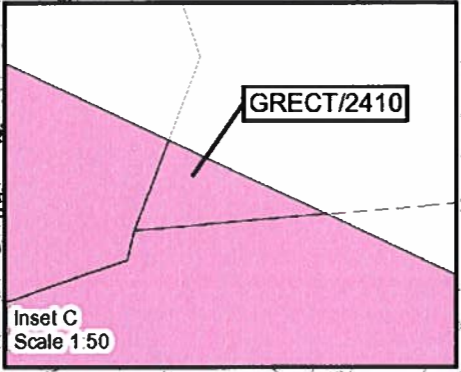
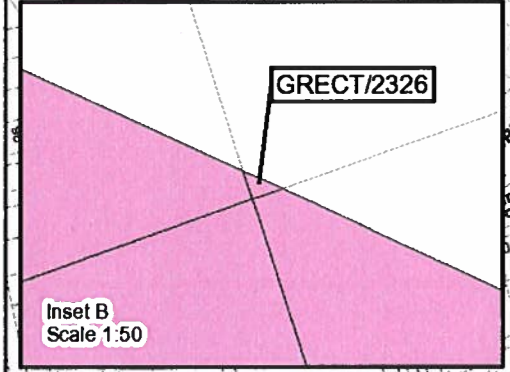
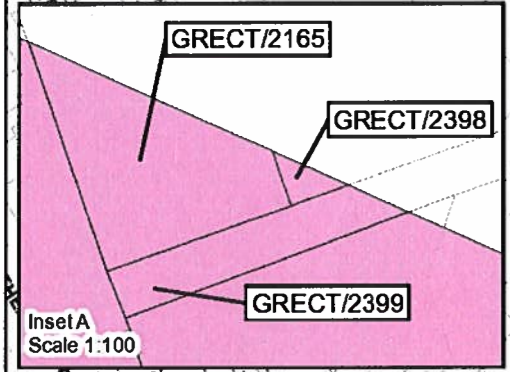
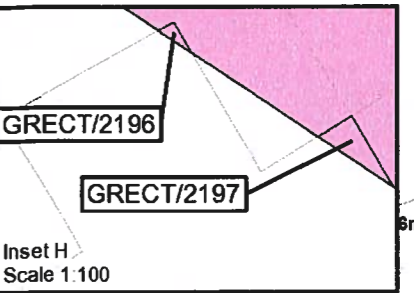
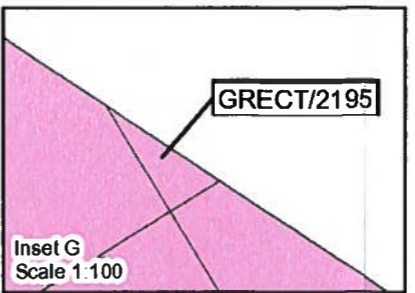
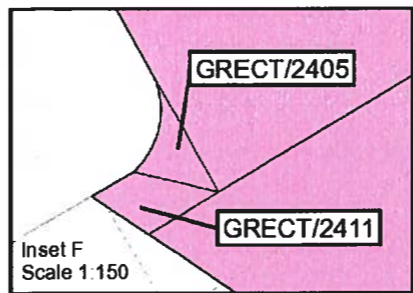
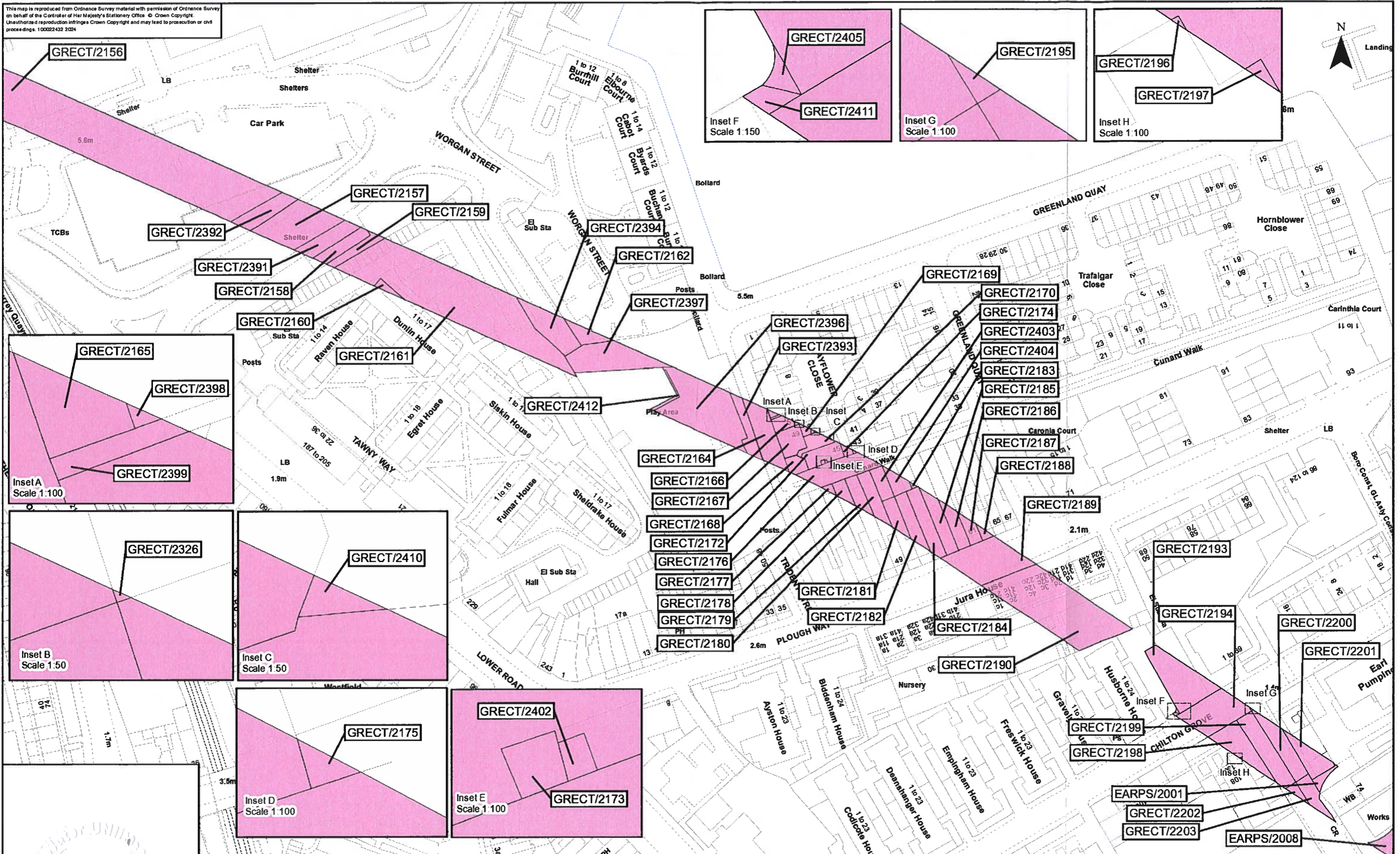
The Thames Water Utilities Limited (Thames Tideway Tunnel) Order 2014 (AS AMENDED) SI 2014 NO 2384

Plan referred to in General Vesting Declaration No 36 of The Thames Water Utilities Limited (Thames Tideway Tunnel) Order 2014 (AS AMENDED) SI 2014 NO 2384


For identification only


Document Reference
70054885-N TC-GVD-TR2-GVD36-0001

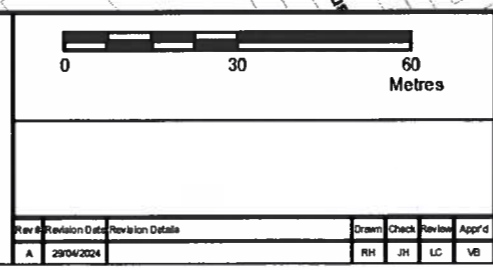
This map is reproduced from Ordnance Survey material with permission of Ordnance Survey on behalf of the Controller of Her Majesty's Stationery Office. © Crown Copyright. Unauthorised reproduction infringes Crown Copyright and may lead to prosecution or civil proceedings. 100022432 2024



2024-1397

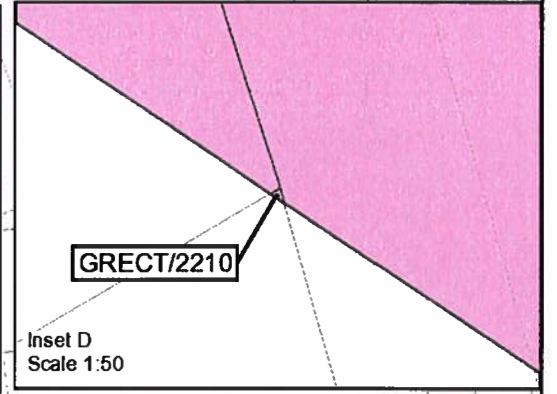
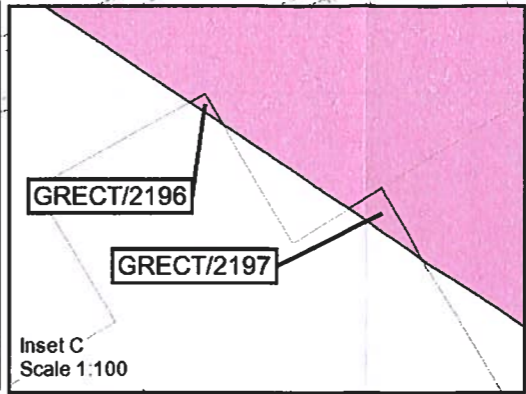
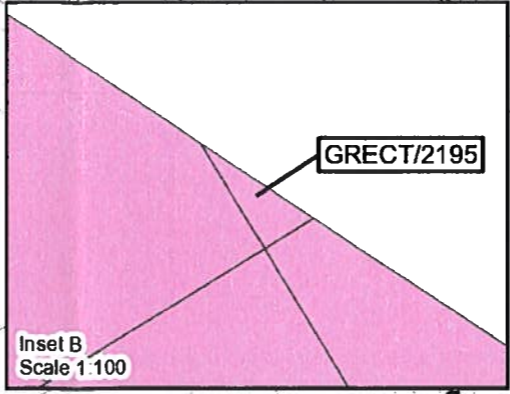
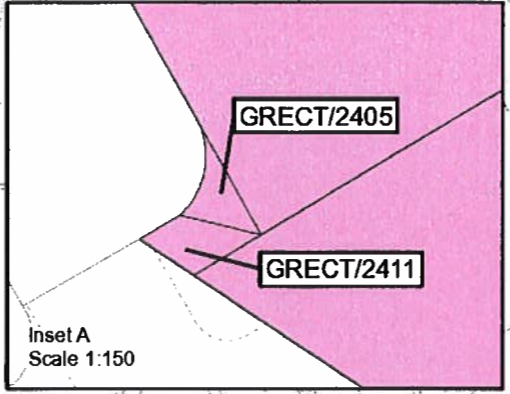
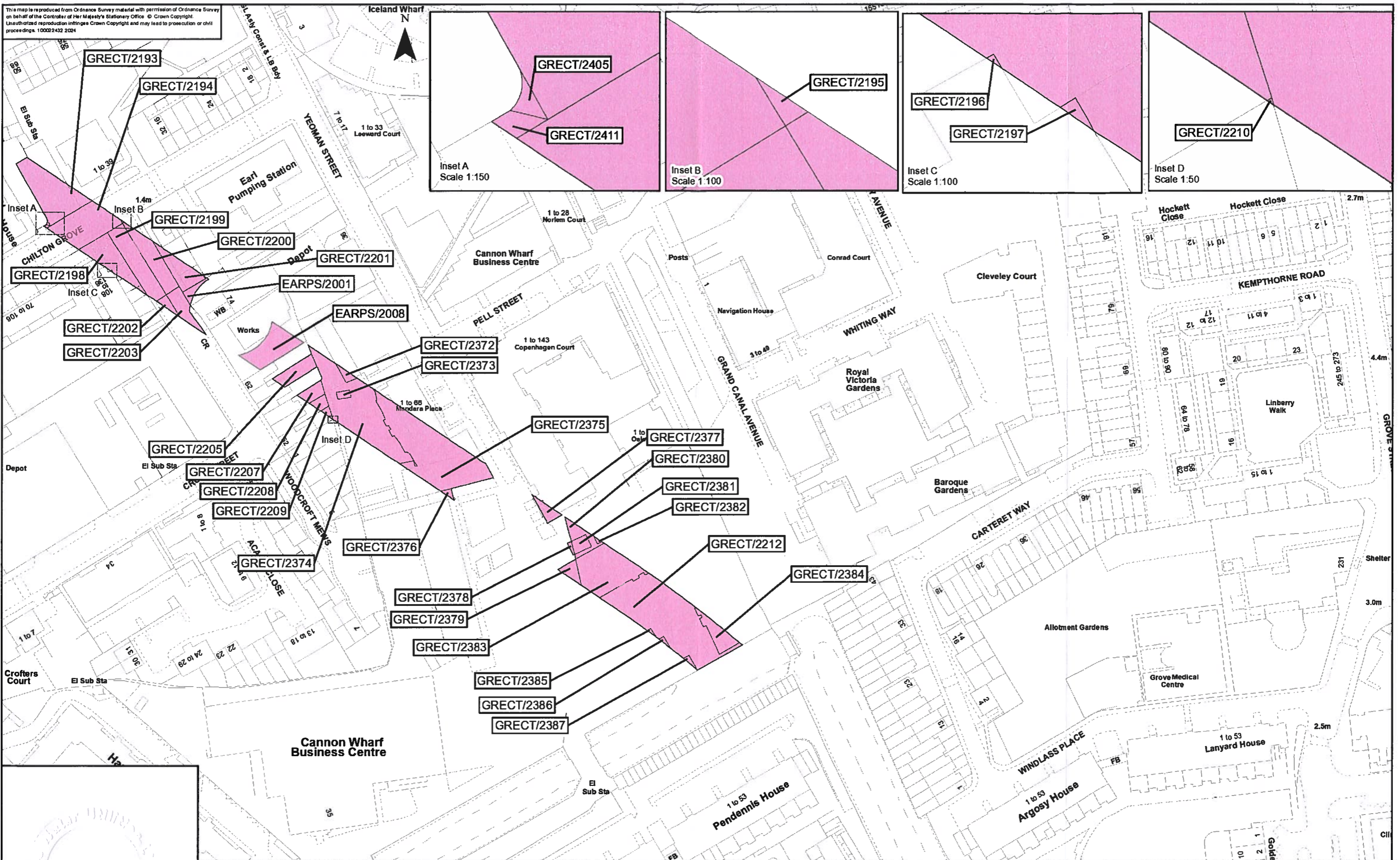
The Common seal of Thames Water Utilities Limited was affixed in the presence of:

 Authorised Signatory
 Dated: 12 June 2024

Key
 Permanent Acquisition of Land
 Jacqueline Sandison
 Senior Legal Counsel

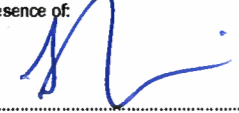



The Thames Water Utilities Limited (Thames Tideway Tunnel) Order 2014 (AS AMENDED) SI 2014 NO 2384
 Drawing Title: Plan referred to in General Vesting Declaration No. 36 of The Thames Water Utilities Limited (Thames Tideway Tunnel) Order 2014 (AS AMENDED) SI 2014 NO 2384
 For identification only
 Document Reference: 70054885-NTC-GVD-TR2-GVD36-0002

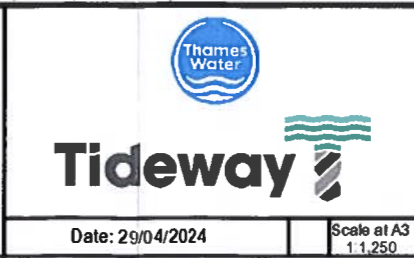
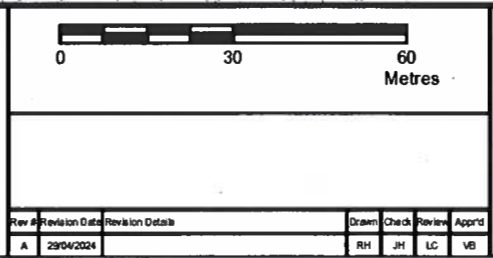
This map is reproduced from Ordnance Survey material with permission of Ordnance Survey on behalf of the Controller of Her Majesty's Stationary Office. © Crown Copyright. Unauthorised reproduction infringes Crown Copyright and may lead to prosecution or civil proceedings. 10002432 2024



2024-1398

The Common seal of Thames Water Utilities Limited was affixed in the presence of:

 Authorised Signatory
 Dated: 12 June 2024

Key
 Permanent Acquisition of Land
 Jacqueline Sandison
 Senior Legal Counsel



The Thames Water Utilities Limited (Thames Tideway Tunnel) Order 2014 (AS AMENDED) SI 2014 NO 2384
 Plan referred to in General Vesting Declaration No. 36 of The Thames Water Utilities Limited (Thames Tideway Tunnel) Order 2014 (AS AMENDED) SI 2014 NO 2384
 For identification only
 Document Reference: 70054885-NTC-GVD-TR2-GVD38-0003