

# CHAMBERS WHARF COMMUNITY LIAISON WORKING GROUP



Chair – Patricia Brown

Tuesday 2nd July 2024

# Agenda

Agenda item	Topic	Name
1	Welcome, introductions, apologies	Patricia Brown
2	Notes and actions from last meeting	Patricia Brown
3	Southwark Council Section 106 and Community Enhancement Fund updates	Southwark Council Jacqueline Christie
4	Update on the wider project Updates from Chambers Wharf project team <ul style="list-style-type: none"><li>Construction update and upcoming activities</li><li>Noise and air quality</li><li>Mitigation and contacting Tideway</li><li>Legacy and Community Investment</li></ul>	Emily Black  Sophie Vicard and Jesse Barr Lydia Claxton Emily Black Martin Griffiths
5	Feedback and discussion	All
6	Any other business	All
7	Meeting Ends	

# Outstanding Actions (from previous meetings)

Open actions from March meeting			
Date	Action	Who	Status
26 Mar 2024	Action 1 - Tideway team to provide an update about the possibility of hoarding off the dead-end of the Thames Path near Fountain Green Square to reduce anti-social behaviour.	Tideway / Southwark Council	Open – Allen Summerskill to provide an update at tonight’s CLWG
26 Mar 2024	Action 2 - Tideway to show a video of the below ground tunnel and shaft at the next CLWG.	Tideway	Open to close at meeting The below short video shows the team going down the shaft at Chambers Wharf and into the tunnel below ground: <a href="https://www.youtube.com/watch?v=ekm88lK9Yiw">https://www.youtube.com/watch?v=ekm88lK9Yiw</a>
26 Mar 2024	Action 3 - Team to provide paper copies of the programme at future CLWGs.	Tideway / CVB	Closed – paper copies printed and will be printed at following meetings
26 Mar 2024	Action 4 - The team to look into hosting a general presentation about the science of noise and how its measured.	Tideway / CVB	Open
26 Mar 2024	Action 5 – Details of the Independent Compensation Panel fast track process to be shared with residents ASAP	Tideway / ICP	Ongoing – Details about the Independent Compensation Panel fast track process continue to be shared via information sheets and weekly e-newsletter

Open actions from previous meetings			
Date	Action	Who	Status
14 Nov 2023	Tideway team to provide an update regarding the cofferdam removal timescales and methodology at the next meeting.	CVB	Open and ongoing – this item was presented at the meeting on 26 March and 2 July 2024 and will remain on the agenda.
14 Nov 2023	Tideway to continue to provide notice to residents ahead of noisy activities including the cofferdam removal.	CVB/Tideway	Open and ongoing
14 Nov 2023	Tideway to invite Andy Mitchell (Tideway CEO) and Graham Parry (Independent Compensation Panel chair) to the next CLWG which is expected to take place in March 2024.	Tideway	<p>Done – Graham Parry attended the meeting on the 26 March. Andy Mitchell was invited to the meeting but was unavailable.</p> <p>Update 26 March – Patricia Brown will write and invite Andy Mitchell to next CLWG. Andy Mitchell attending 2 July meeting.</p>
14 Nov 2023	CVB to look into the request for a site visit for residents.	CVB	Note – There isn't much to see on the site currently. The view from the window shows what the site looks like now.
14 Nov 2023	Tideway to discuss calls not being transferred with the Helpdesk to ensure it does not happen again.	Tideway	Done – we have spoken with the call centre and details of complaints are sent to Southwark Council on a monthly basis. All complaints are also sent through to the Engagement Manager for their awareness.
14 Nov 2023	CVB to provide an update on how noise monitoring and mitigation is undertaken at an upcoming CLWG.	CVB	Open
21 Nov 2022	Future developer to be invited to CLWG meeting at appropriate time.	Tideway	Open – developer to be invited in due course.
4 July 2022	Team to present at future CLWG on the reused and recycled elements of the project.	CVB	Open and ongoing – team will continue to highlight where we have reused and recycled elements of the project.

# **UPDATE FROM SOUTHWARK COUNCIL**

Jacqueline Christie

# CHAMBERS WHARF COMMUNITY ENHANCEMENT FUND (CEF)

Jacqueline Christie

Project Manager

July 2024



# Framework for the CEF fund

Under legal agreement Thames Water have agreed to fund a number of projects in the local area surrounding the Chambers Wharf site. This is set out in with accordance with the details and terms in the agreement.

Financial contributions of **£5,000,000** to local infrastructure projects in the area adjacent to Chambers Wharf including local schools, play facilities, transport improvements.

The expenditure of a **£1,000,000** Community Enhancement Fund (CEF) with clear guidance on how local people can submit project ideas, and a how a local panel of stakeholders can oversee the expenditure.

# Scott Lidgett and Wickfield Playground Improvements

Consultation was completed at the end of last year for the final phase of playground improvements for:

- Scott Lidgett Playground
- Wickfield play ball court and play area

Work is due to start after the summer holidays to create a playground that local families can enjoy.



Playground Layout Plan - Timber Tree House

The Timber Tree House design incorporates curved edges and smooth lines with fluid play equipment proposed which mainly consists of timber materials, offering a range of play activities for ages up to 12. A large central Play hut on top of a mound encourages a mix of dynamic play, with other play specific equipment giving opportunities for sliding, swinging and climbing. The scheme also include new seating areas for parents/ guardians to sit, with new planting areas to enjoy.

- Key
1. Existing Ballcourt retained
  2. Existing Gate Entrance made accessible
  3. East Lane
  4. Scott Lidgett Crescent
  5. Existing Playground Entrance
  6. Kampan Swing with Nest Swing
  7. Kampan Play Hut with Stairway
  8. Kampan Up and Over Net
  9. Kampan Track Ride Tower
  10. New Seating Area
  11. New Planting Areas
- Existing Trees  
New Railings & Gates  
Amenity Grass



Scott Lidgett  
Playground

Playground Layout Plan - Metal Platform

'The Metal Platform' design includes curved rubber crumb surfacing and the traditional play equipment such as swings, slides and carousels, which mainly consists of stainless steel and recycled EcoCore. The large 'Triple Tower' play equipment offers various levels of difficulty in access climbing and balance with the Steel Swing allowing for ages up to 12. New planting areas are proposed with new seating areas to allow Parents / Guardians a place to sit, rest and relax.

- Key
1. Existing Ballcourt retained
  2. Existing Gate Entrance made accessible
  3. East Lane
  4. Scott Lidgett Crescent
  5. Existing Playground Entrance
  6. Kampan Triple Tower
  7. Kampan Steel Swing
  8. Kampan Accessible Roundabout
  9. Kampan Springer Bowl
  10. New Seating Area
  11. New Planting Areas
- Existing Trees  
New Railings & Gates  
Amenity Grass



Playground Layout Plan - Wickfield Play Area and Ball Court

Proposals at the Wickfield play area and ball court are to retain and refurbish where possible. All equipment within the play space to be retained and refurbished as necessary. New safety surfacing will be provided. A new rubber crumb surface will emphasize the entrance in the play space, and new seating will be provided. The Ball Court will be cleaned and refurbished with new line markings. Seating will also be provided alongside the pitch markings.

Key

- 1. Existing Ballcourt retained, cleaned with new pitch markings
- 2. Scott Ludgett Crescent
- 3. Existing Public Pathway
- 4. Existing Playground Entrance, railings refurbished
- 5. Existing Play Equipment retained and refurbished
- 6. New Seating Area
- 7. New Rubber crumb surfacing
- 8. New Grass Rubber matting
- 9. New Planting Areas
- 10. New Play Markings
- 11. Existing Goals retained



Wickfield Ball Court  
and Play area



7. Rubber Matting



7. Rubber Crumb Surfacing



7. New seating areas

# CEF APPLICATIONS OVERVIEW

- To date there have been **16** separate voting events
- A total of **67** applications have been submitted by local residents and organisations
- **55** applications were approved, with **12** being refused.



# 2023/24 CEF Projects

## Dicken Estate community Greening

Approved £48,095 for screening the Dickens estate from the road pollution with wildlife-friendly hedges.

Also de paving the alley and putting in drought resistant plants, greenery, as well as adding new planting in two adjacent locations and maintaining it for 3 years.



# Wrayburn TMO Ecology Projects

Wrayburn TMO approved £16,500 to purchase and maintain community greening area.

Also to encourage more residents to get involved with greening.

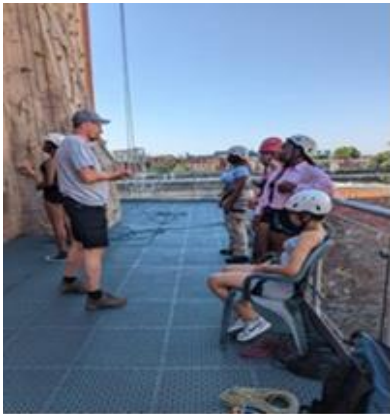
This will also provide a community vegetable garden. Local residents can grow their own vegetables.



# Schools Out @ Salmon Project

Salmon Youth Centre approved £13,790 for provide another year of allocated places to Chambers Wharf children providing a total of 304 young people with an exciting summer of activities with a 1 weekly play scheme, 17 trips, 3 evening clubs and 1 residential.

707 attended last year and they hope to repeat the same numbers and a host a variety of activities.



## Young Peoples Feedback

*“the Salmon Summer scheme was my favourite week of the summer the rest of the summer was really boring, I didn’t go anywhere I stayed in my house” 11 year old.*



# Cranbourne Passage Way Project

Approved £35,698 for creating and maintaining green walkway by de-paving the area.

This will become an attractive green corridor, designed and landscaped with imaginative wildlife-friendly planting.

Riverside School workshop planting day



# Old Justice Defibrillator

Approved £10,500 to purchase, install and maintain a defibrillator outside their building. This will work to support the local community to help save lives of local people and visitors to the area.





# Bermondsey Operation Soft Play

Approved £39,789 to provide a free service for children under 5 years old and their families in Southwark over 2 years.

Open to all, this service has been supporting local children and their families for several years.



# Fountain Green Square Revival Project

Approved £44,450 residents and Wilder Ltd are working together on ideas for breathing new life into the green that their homes look on to.

Consultation is ongoing with residents of the green to uplift the look and feel of the green by looking at a range of options.

# Riverside Primary School

## **Riverside Primary School**

Approved £29,009 for the installation of a greenhouse and water collection unit will support the learning environment for the pupils by bringing nature into the city environment.

## **Friends of Riverside Primary school**

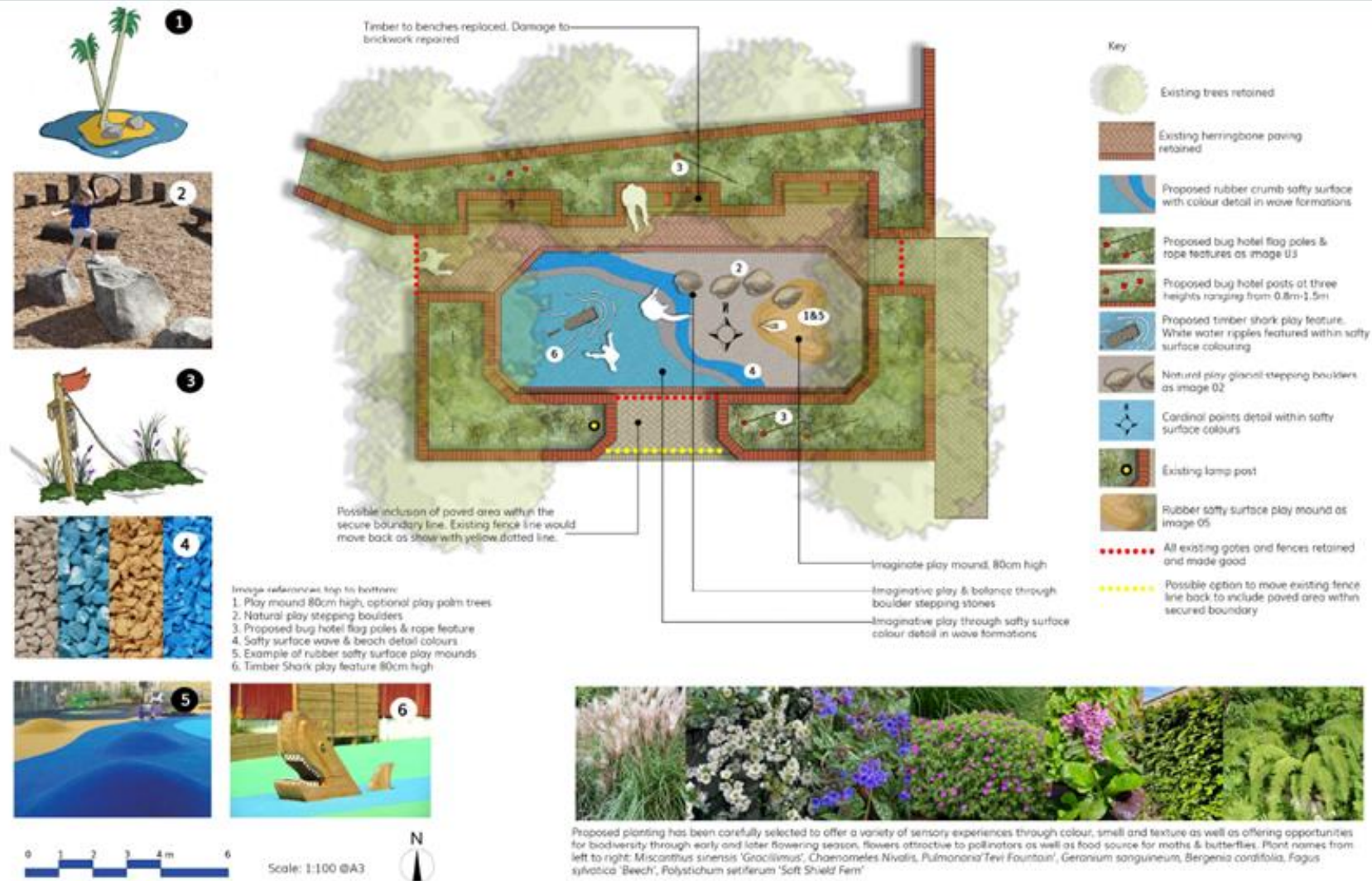
Approved £9,500 for the newly formed PTA group to support the school with local school trips and towards the first summer fair to bring the school community together.

# Cherry Garden Play Space Improvements

Approved £45,100 to revamp the play area.

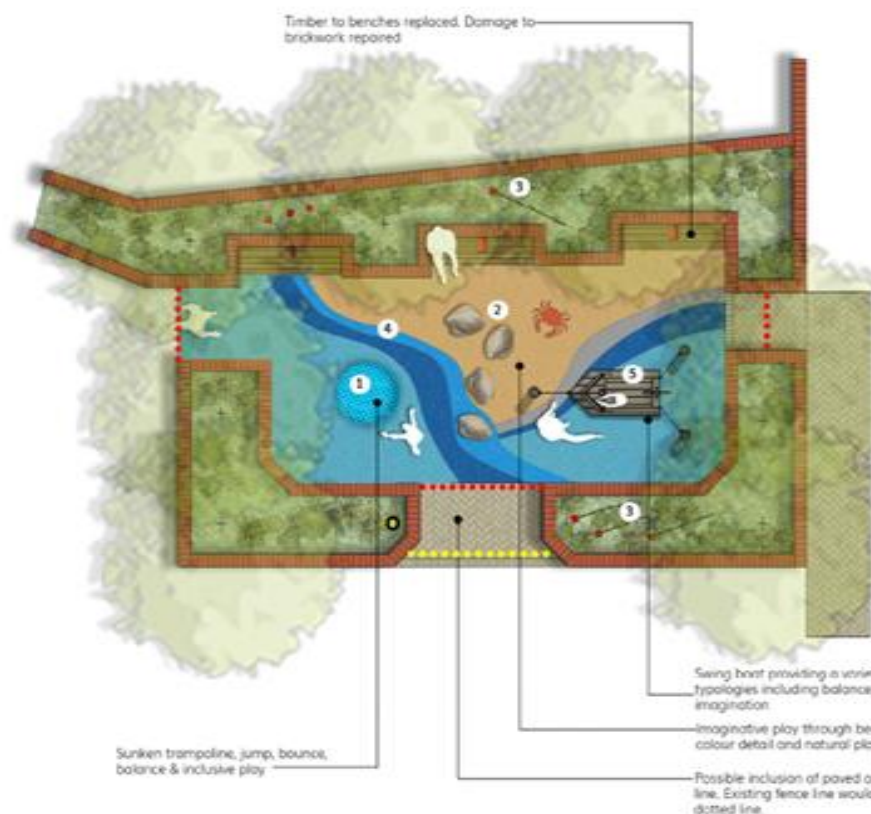
Consultation is now taking place with local residents on the two option designs for the play space.

## Option one





# Cherry Garden Play Space Improvements



Proposed planting has been carefully selected to offer a variety of sensory experiences through colour, smell and texture as well as offering opportunities for biodiversity by providing a variety of food sources for pollinators as well as food waste for insects & butterflies. Plant species from left to right: *Miscanthus sinensis*, *Groenlandia*, *Astragalus*, *Clivia*, *Anemone* x *hybrida*, *Androsace*, *Geranium sanguineum*, *Rosmarinus officinalis*, *Prostratus*, *Fagus sylvatica*, *Beech*, *Polystichum setiferum*, *Soft Shield Fern*.

# CEF SPEND

Tideway S106 community projects total spend end 2023/24

Years	Number of Projects	Total spend
2017	7	£78,100.00
2018	3	£57,400.00
2019	6	£134,824.00
2020	6	£22,995.00
2021	6	£49,012.00
2022	5	£120,112.00
2023	17	£348,145.00
2024	5	£107,089.00
<b>Total</b>	<b>55</b>	<b>£917,677.00</b>
<b>Balance</b>		<b>£82,323.00</b>

## How to get involved

- Residents with community improvement ideas are encouraged to **work together** to make an application to the Community Enhancement Fund.
- Full details and the application form are available on Southwark Council's website at <https://www.southwark.gov.uk/tideway>

## Next Funding - Deadline

The next deadline for submitting applications is now - **30 August 2024**

# PROJECT OVERVIEW





BMB

WEST

1

Acton Storm Tanks

2

Hammersmith Pumping Station

3

Barn Elms

4

Putney Embankment Foreshore

5

Dormay Street

6

King George's Park

7

Carnwath Road Riverside



FLO

CENTRAL

8

Falconbrook Pumping Station

9

Cremorne Wharf Depot

10

Chelsea Embankment Foreshore

11

Kirtling Street

12

Heathwall Pumping Station

13

Albert Embankment Foreshore

14

Victoria Embankment Foreshore

15

Blackfriars Bridge Foreshore



CVB

EAST

17

Chambers Wharf

18

Earl Pumping Station

19

Deptford Church Street

20

Greenwich Pumping Station

21

King Edward Memorial Park Foreshore

23

Abbey Mills Pumping Station



Thames Water

16

Shad Thames Pumping Station

22

Bekesbourne Street

24

Beckton Sewage Treatment Works

MAP KEY

Main tunnel drive tunnel site

Main tunnel reception site

CSO site

Short connection tunnel drive site

Long connection tunnel drive site

System modifications

Main tunnel

Connection Tunnels

Lee Tunnel

Proposed drive direction

West works site

Central works sites

East works site

2

3

4

5

6

7



# Tunnel complete & connecting up

Final major construction work complete underground

Abbey Mills shaft cover slab lifted and moved into position

- 1,200 tonne lift
- Took 5 hours for manoeuvre

Wall between Lee Tunnel and Tideway tunnel removed

London Tideway Tunnel is now one continuous tunnel

Over the summer the various site teams will connect each former discharge points along the route into the tunnel

Later this year we will start storm testing

Super sewer planned to be operational in 2025





# CONSTRUCTION UPDATE

Sophie Vicard – Project Manager CVB  
Jesse Barr – Site Agent CVB



**Tideway**





# SHAFT – Shed removed and cover backfilled

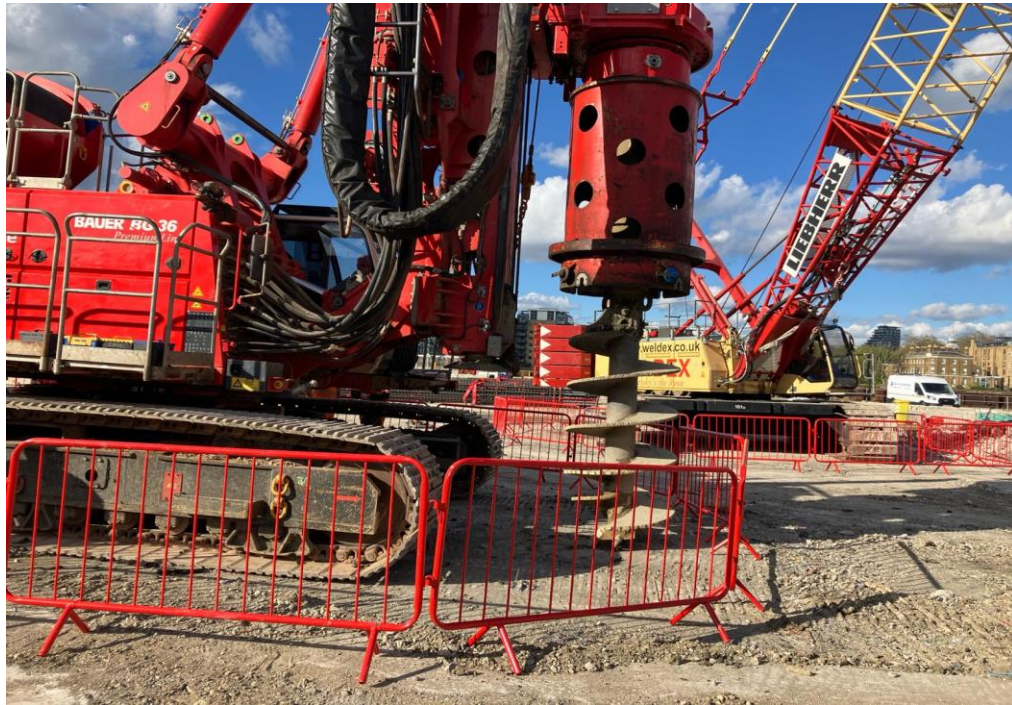
- Noise enclosure removed from above the shaft
- Backfill material installed on top of shaft cover





# RIVERWALL PILING – Works completed!

- 63 new river wall piles safely installed
- 1,000 linear metres of piles
- 1,500 m3 of concrete poured
- 150 tonnes of reinforced steel





# CAPPING BEAM and LUNA HOUSE – Completion by end of July





# Kiosk and Air Treatment Unit– Completion by end of Summer



# CHAMBERS WHARF – UPCOMING WORKS

- Cofferdam Removal – starting July 2024
- Kiosk commissioning
- Architecture and landscaping
- Loftie Street – new access gate





# UPCOMING WORKS - COFFERDAM REMOVAL METHODOLOGY

## Removal of Cofferdam – Summer '24 to Spring '25

- Installation of 2 new sheet pile connection walls to create three cells (east, central and west) for safe cofferdam removal
- Breaking of concrete will start from 8 July for approximately 2 months
- An additional cross wall is needed to be installed following design review to ensure safe work on the cofferdam (two in total)
- Approx 24 new sheet piles installed by vibro hammer (but if problematic, may require impact pile unit)
- The hinterland and fill will be removed using excavators and material removed by barge
- The cells will then be excavated and sheets removed in a sequence working from east to west
- Most of the sheet piles will be removed using a Dawson hydraulic piler. The remaining piles that cannot be removed using the Dawson will be removed using a vibro hammer





# WORK PLANNED - COFFERDAM REMOVAL SEQUENCE

## Anticipated Sequence

1. Installation of two new sheet pile cross walls to create eastern, central and western cofferdam cells.

Expected to start mid-summer and take 2 to 3 weeks.

2. Removal of hinterland area  
Starting mid-summer

3. Removal of eastern twin wall cofferdam cell starting next to Fountain Green Square. Removal of western twin wall cofferdam cell.

Starting autumn 2024 and finishing next to Luna House in spring 2025



# TAKEN OFFSITE BY RIVER

## Cofferdam removal

- 55,000m<sup>3</sup> of excavated material will be removed, avoiding approx over 3000 lorries coming to site

## Piling and Capping Beam arising

- 5,000m<sup>3</sup> of excavated material removed, avoiding approx 300 lorries coming to site





## UPCOMING PROGRAMME OF WORKS (next 6 months)

[illegible]

## Normal Working Hours

- 08:00 to 18:00 - weekdays
- 08:00 to 13:00 - Saturdays

## Extended Working Hours

- Tidal activities
- Concreting activities

### Breaking concrete on Saturday (trialled)

- 09:00 to 14:00

# HIGH LEVEL PROGRAMME OF WORKS

Activity	Start Date	Jul	Oct	Jan	Apr	Jul	Oct
		2024				2025	
		Q3	Q4	Q1	Q2	Q3	Q4
Commissioning	Started						
Cofferdam - Temporary Crosswalls installation	Jul-24						
Cofferdam - Hinterland excavation	Jul-24						
Cofferdam - Outerland excavation	Sep-24						
Cofferdam Sheetpile removal	Sep-24						
A&L - Cladding panel installation	Oct-24						
A&L - Intertidal terrace	Spring 2024						
A&L - Pavement installation	Summer 2024						
New Access - Loftie Street	Autumn 2024						
Secured fencing installation	Autumn 2024						
Installation of Permanent Ventilation Columns	Autumn 2024						
Construction completed - Land Handback	Summer 2025						



# NOISE AND AIR QUALITY

Lydia Claxton, Environment Advisor CVB



**Tideway**





# Environment Summary: March – July 2024



## Noise Monitoring since last CLWG

- No Section 61 noise exceedances in the last 6 months
- Attended monitoring undertaken

## Air Quality Monitoring

- No Air Quality Exceedances in the last 6 months (24h PM10)

Any exceedances shown by our monitors are investigated thoroughly after we are alerted.

# NOISE MITIGATION

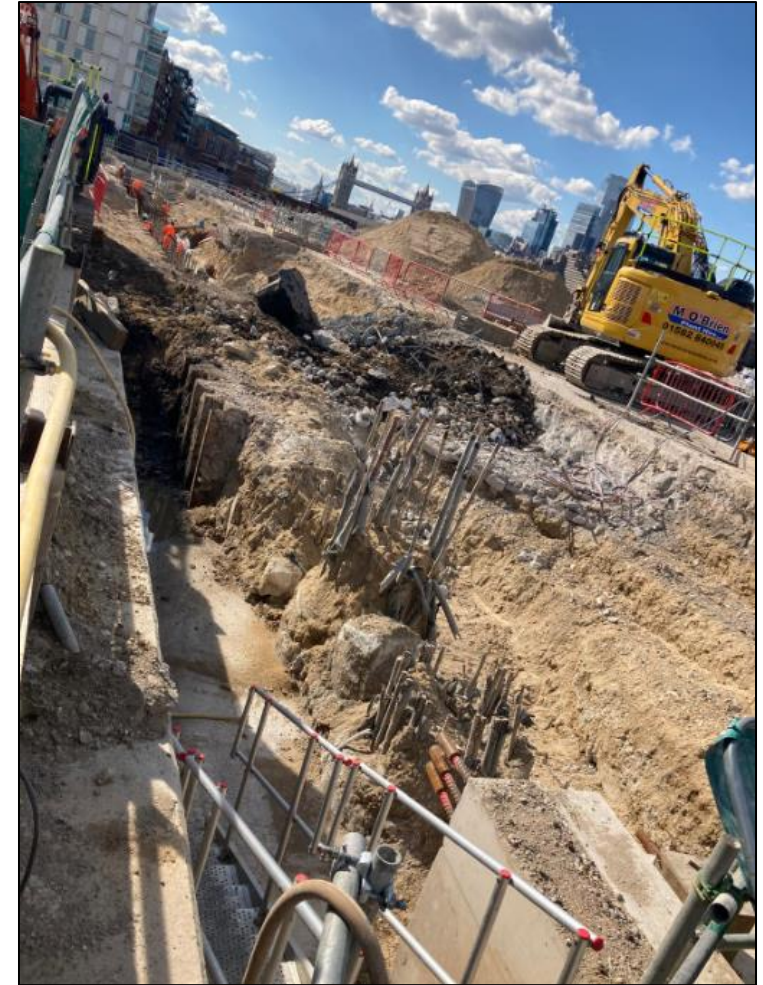
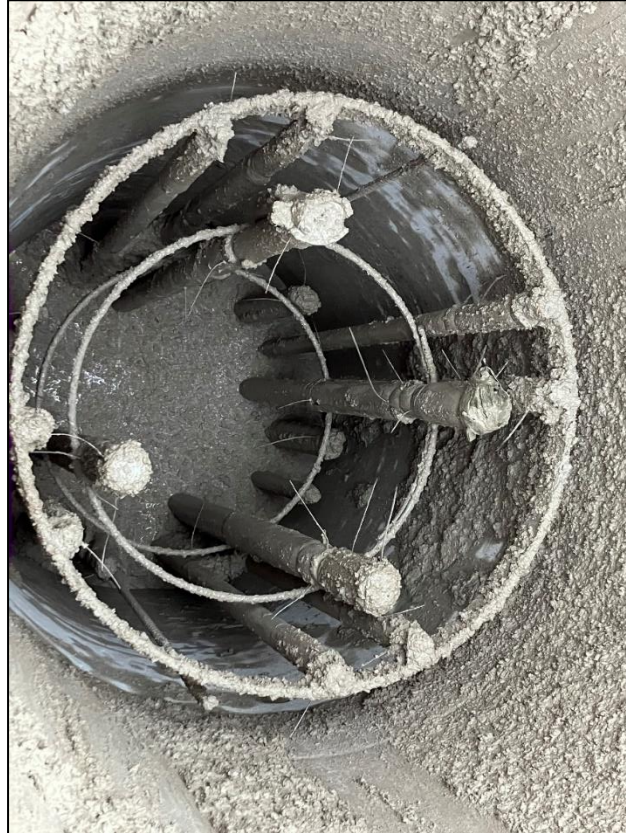


## Key methods for reducing noise onsite

- Planning construction methodologies with noise impacts as a key consideration (Section 61 consent)
- Monitoring noise across site to identify exceptional noise sources
- Acoustic screening static plant where possible
- Localised screening of loud activities (concrete breaking, floor sawing etc) where possible
- Sourcing / developing low noise plant & equipment where possible
- Shutting down plant and equipment when not in use
- Offsite fabrication of construction elements where possible
- Using mains electricity to power equipment where practicable
- Alternative concrete cutting techniques used to reduce noise when breaking concrete



# CAPPING BEAM – Noise mitigations – Vacuum Excavator





# MITIGATION

## **Making a claim if affected by Tideway's work**

### **Who do I go to for advice?**

For personal assistance contact our Helpdesk: 08000 30 80 80 or [helpdesk@tideway.london](mailto:helpdesk@tideway.london)

For independent advice contact Independent Advisory Service (IAS) Helpline: 0800 917 8845 or [info@tidewayias.co.uk](mailto:info@tidewayias.co.uk)

### **How do I submit my claim?**

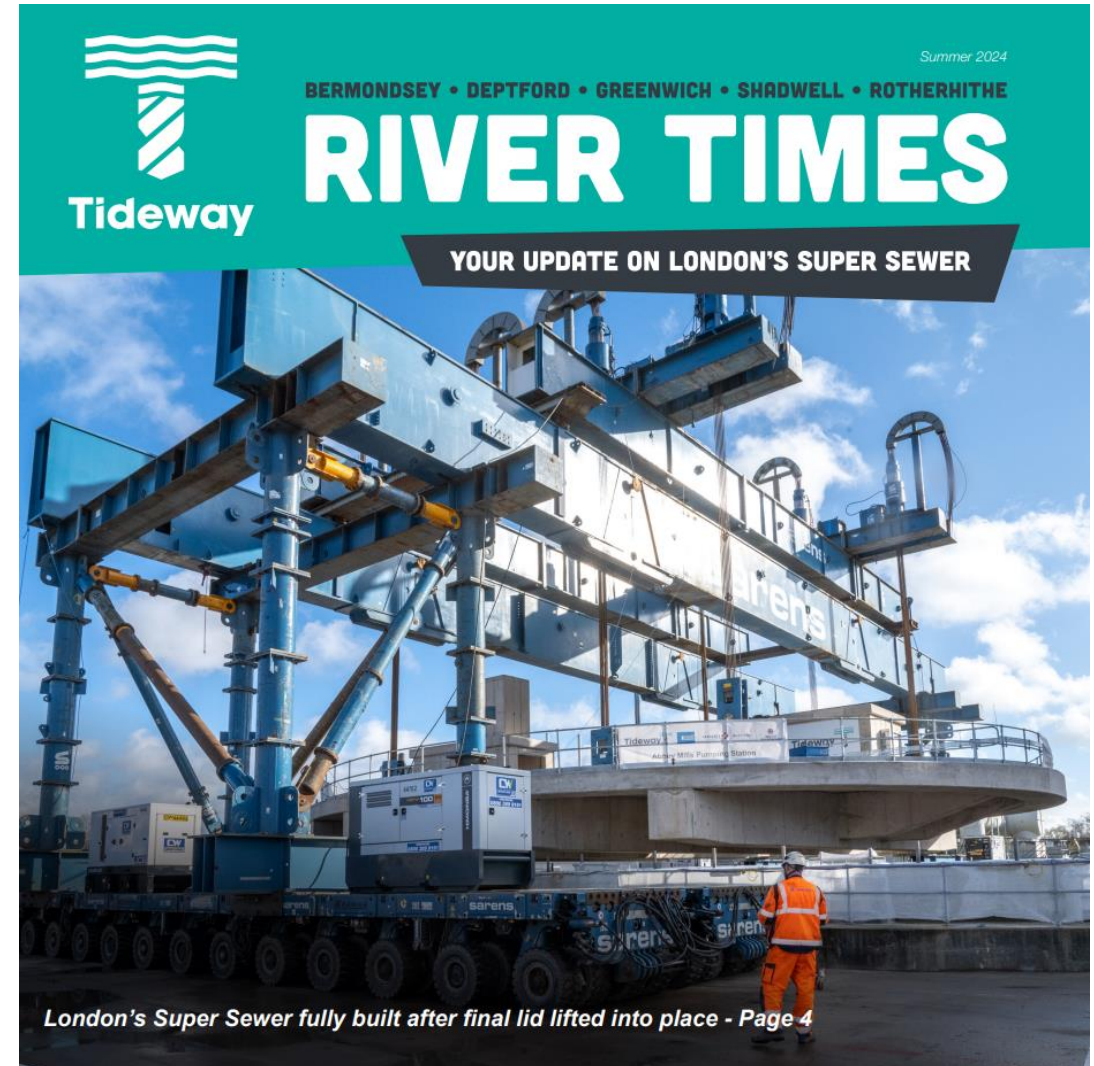
The Helpdesk can submit your claim to the Independent Compensation Panel (ICP) on your behalf, or you can submit your claim direct to the ICP: [admin@tidewayicp.london](mailto:admin@tidewayicp.london)

You can download the claim form from the Tideway website:

[www.tideway.london/help-advice/compensation-information/Independent-Compensation-Panel](http://www.tideway.london/help-advice/compensation-information/Independent-Compensation-Panel)

# CONTACTING US

- If you have any questions or enquiries, please contact the Tideway Helpdesk:
- Telephone: **0800 030 80 80**
- Email: **[Helpdesk@Tideway.London](mailto:Helpdesk@Tideway.London)**





# LEGACY



Tideway





- Tideway shortlisted for Environmental Project of the Year in British Construction Industry Awards
- Better Society Awards – Tideway were Highly Commended
- Senior Project Manager won European Women in Construction & Engineering Project Manager Award



Chambers Wharf Site agent ran London marathon in under 3.5 hours, raising over £1,800 for Guide Dogs



Next issue of River Times out soon



Work Experience students in 2024: 9 here so far



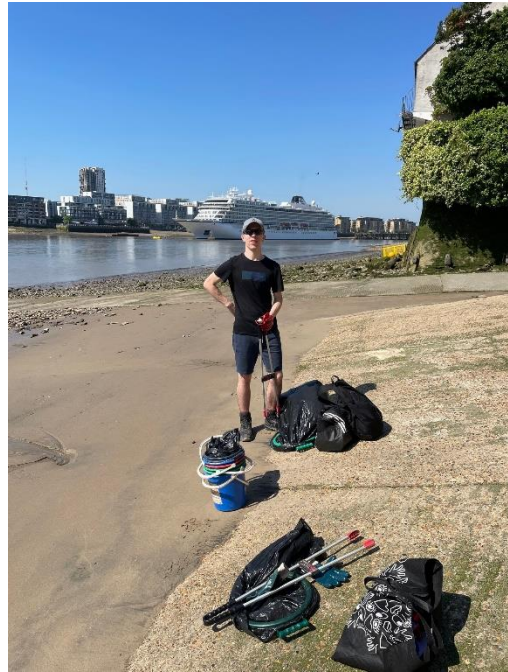


Tideway Sustainability report published last week:

- 79 Apprentices here in Tideway East;
- We have planted 126 trees across our 5 East boroughs;
- 627 Southwark residents employed at our 6 East sites

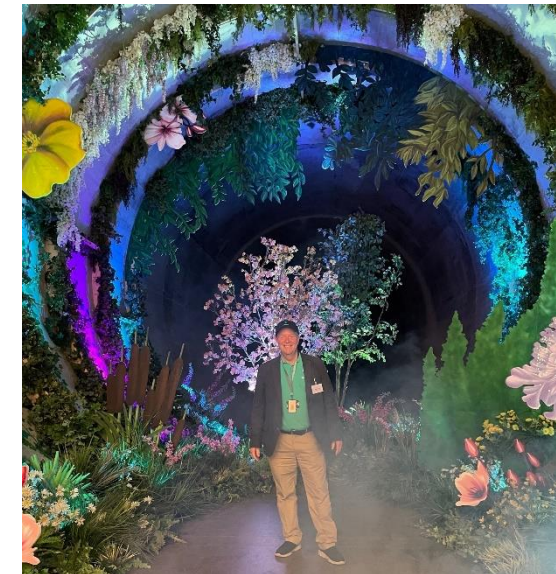
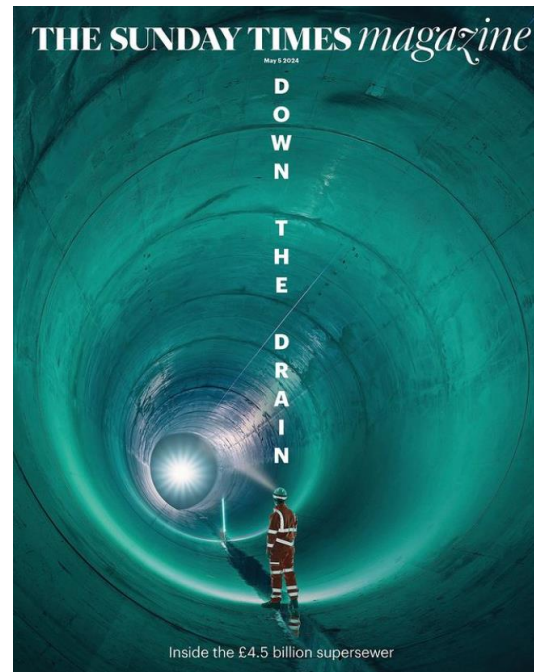


BBC covered the closing of the last Tideway shaft live on breakfast television



London Rivers (last) Week:  
Thames21 foreshore  
litter survey

Sunday Times highlighted the project in their magazine



Tideway's "Loo Gardens" campaign won Media Relations Campaign of the Year at PR Moment Awards





Community Enhancement Fund  
planting by Old Justice pub and at  
Wrayburn House



University of the Third Age visited the Chambers Wharf  
offices



PPE donation to charity  
Constructionarium to help train  
students for future careers



# THANK YOU



## Any Questions?



**Tideway**

# **RECONNECTING LONDON WITH THE RIVER THAMES**

**#SuperSewer**

[www.tideway.london](http://www.tideway.london)