

THE THAMES WATER UTILITIES LIMITED (THAMES TIDEWAY TUNNEL) ORDER 2014 (AS AMENDED)¹ SI 2014 NO.2384

GENERAL VESTING DECLARATION No. 33

This GENERAL VESTING DECLARATION NO. 33 is made the 9th day of May 2024 by Thames Water Utilities Limited ("Thames Water").

WHEREAS:

- 1 On 3 September 2014 an order entitled The Thames Water Utilities Limited (Thames Tideway Tunnel) Order 2014 (as amended) SI 2014 No.2384 ("the Order") was made (and came into force on 24 September 2014) by the Secretaries of State for Communities and Local Government and Environment, Food and Rural Affairs under the powers conferred on them by the Planning Act 2008 authorising Thames Water to acquire the land specified in the Schedule hereto.
- 2 Notice of the making/confirmation of the Order was first published in accordance with section 134 of the Planning Act 2008 on 19 September 2014.
- 3 Preliminary notice of the intention to make a general vesting declaration in respect of any of the land described in the Schedule hereto was first published on **24 November 2023** in accordance with section 3 of the Compulsory Purchase (Vesting Declarations) Act 1981 ("the 1981 Act")², as modified by Article 34 of the Order.
- 4 That preliminary notice included the particulars specified in section 3(3) of the 1981 Act, as modified by Article 34 of the Order.
- 5 The notice referred to in (4) above specified the period of two months beginning with the date of its first publication as the period before the end of which this general vesting declaration could not be executed.

NOW THIS DEED WITNESSETH that, in exercise of the powers conferred on them by the Order and section 4 of the 1981 Act, Thames Water hereby declare:

The land described in the Schedule hereto being part of the land authorised to be acquired by the Order and more particularly delineated on the plans annexed hereto, together with the right to enter upon and take possession of the land shall vest in the Thames Water as from the end of the period of 28 days from the date on which the service of notices required by section 6 of the 1981 Act and in accordance with Article 34 of the Order is completed.

¹ The Order has been amended by (1) SI 2015/723 issued on 17 March 2015; (2) SI 2017/659 issued on 16 May 2017; (3) SI 2018/1262 issued 29 November 2018; (4) Notices of Variation Nos.1 and 2 Issued on 17 March 2015 and 17 August 2017 respectively in respect of the Deemed Marine Licence; (5) SI 2020/268 issued on 10 March 2020; and (6) SI 2020/862 issued on 13 August 2020.

² The Version of the 1981 Act is the version that applied immediately prior to amendments brought in by the Housing and Planning Bill on 13 October 2015 and as modified by the Order.

SCHEDULE

The land

<u>Reference number on attached notice plan</u>	<u>Description of the land</u>	<u>Associated Book of Reference plot number</u>	<u>Title Number</u>
GRECT/2004	544.5 square metres of a stratum of subsoil below flats (Hartley House, Chambers Street) where the upper surface of the stratum of the sub-soil is at a level equivalent to -39m (minus thirty nine metres) OD (Ordnance Datum) or thereabout at its western boundary and -38.9m (minus thirty eight point nine metres) OD (Ordnance Datum) or thereabouts at its eastern boundary, and the lower surface of the stratum of the sub-soil is at a level equivalent to -56.8m (minus fifty six point eight metres) OD (Ordnance Datum) or thereabout at its western boundary and -56.8m (minus fifty six point eight metres) OD (Ordnance Datum) or thereabouts at its eastern boundary.	57 - London Borough of Southwark	SGL269207
GRECT/2006	38.6 square metres of a stratum of subsoil below flats (Wrayburn House) where the upper surface of the stratum of the sub-soil is at a level equivalent to -38.9m (minus thirty eight point nine metres) OD (Ordnance Datum) or thereabout at its western boundary and -38.9m (minus thirty eight point nine metres) OD (Ordnance Datum) or thereabouts at its eastern boundary, and the lower surface of the stratum of the sub-soil is at a level equivalent to -56.8m (minus fifty six point eight metres) OD (Ordnance Datum) or thereabout at its western boundary and -56.7m (minus fifty six point seven metres) OD (Ordnance Datum) or thereabouts at its eastern boundary.	60 - London Borough of Southwark	TGL91108
GRECT/2020	68.9 square metres of a stratum of subsoil below flats (8, 21 and 34, Bromfield Court) where the upper surface of the stratum of the sub-soil is at a level equivalent to -38.5m (minus thirty eight point five metres) OD (Ordnance Datum) or thereabout at its western boundary and -38.4m (minus thirty eight point four metres) OD (Ordnance Datum) or thereabouts at its eastern boundary, and the lower surface of the stratum of the sub-soil is at a level equivalent to -56.3m (minus fifty six point three metres) OD (Ordnance Datum) or thereabout at its western boundary and -56.3m (minus fifty six point three metres) OD (Ordnance Datum) or thereabouts at its eastern boundary.	72 - London Borough of Southwark	TGL228990, TGL31288
GRECT/2142	1.5 square metres of a stratum of subsoil below house and garden (157, Lower Road) where the upper surface of the stratum of the sub-soil is at a level equivalent to -35.9m (minus thirty five point nine metres) OD (Ordnance Datum) or thereabout at its western boundary and -35.9m (minus thirty five point nine metres) OD (Ordnance Datum) or thereabouts at its eastern boundary, and the lower surface of the stratum of the sub-soil is at a level equivalent to -53.8m (minus fifty three point eight metres) OD (Ordnance Datum) or thereabout at its western boundary and -53.7m (minus fifty three point seven metres) OD (Ordnance Datum) or thereabouts at its eastern boundary.	220 - London Borough of Southwark	LN219717
GRECT/2143	11.5 square metres of a stratum of subsoil below house and garden (159, Lower Road) where the upper surface of the stratum of the sub-soil is at a level equivalent to -35.9m (minus thirty five point nine metres) OD (Ordnance Datum) or thereabout at its western boundary and -35.9m (minus thirty five point nine metres) OD (Ordnance Datum) or thereabouts at its eastern boundary, and the lower surface of the stratum of the sub-soil is at a level equivalent to -53.7m (minus fifty three point seven metres) OD (Ordnance Datum) or thereabout at its western boundary and -53.7m (minus fifty three point seven metres) OD (Ordnance Datum) or thereabouts at its eastern boundary.	221 - London Borough of Southwark	SGL119384

GRECT/2144	24.2 square metres of a stratum of subsoil below house and garden (161, Lower Road) where the upper surface of the stratum of the sub-soil is at a level equivalent to -35.9m (minus thirty five point nine metres) OD (Ordnance Datum) or thereabout at its western boundary and -35.9m (minus thirty five point nine metres) OD (Ordnance Datum) or thereabouts at its eastern boundary, and the lower surface of the stratum of the sub-soil is at a level equivalent to -53.7m (minus fifty three point seven metres) OD (Ordnance Datum) or thereabout at its western boundary and -53.7m (minus fifty three point seven metres) OD (Ordnance Datum) or thereabouts at its eastern boundary.	222 - London Borough of Southwark	343124, SGL494115
GRECT/2145	35 square metres of a stratum of subsoil below house and garden (163, Lower Road) where the upper surface of the stratum of the sub-soil is at a level equivalent to -35.9m (minus thirty five point nine metres) OD (Ordnance Datum) or thereabout at its western boundary and -35.8m (minus thirty five point eight metres) OD (Ordnance Datum) or thereabouts at its eastern boundary, and the lower surface of the stratum of the sub-soil is at a level equivalent to -53.7m (minus fifty three point seven metres) OD (Ordnance Datum) or thereabout at its western boundary and -53.7m (minus fifty three point seven metres) OD (Ordnance Datum) or thereabouts at its eastern boundary.	223 - London Borough of Southwark	LN201073, TGL245849, TGL184985
GRECT/2146	44.2 square metres of a stratum of subsoil below house and garden (165, Lower Road) where the upper surface of the stratum of the sub-soil is at a level equivalent to -35.8m (minus thirty five point eight metres) OD (Ordnance Datum) or thereabout at its western boundary and -35.8m (minus thirty five point eight metres) OD (Ordnance Datum) or thereabouts at its eastern boundary, and the lower surface of the stratum of the sub-soil is at a level equivalent to -53.7m (minus fifty three point seven metres) OD (Ordnance Datum) or thereabout at its western boundary and -53.7m (minus fifty three point seven metres) OD (Ordnance Datum) or thereabouts at its eastern boundary.	224 - London Borough of Southwark	LN162525
GRECT/2147	57.8 square metres of a stratum of subsoil below house and garden (167, Lower Road) where the upper surface of the stratum of the sub-soil is at a level equivalent to -35.8m (minus thirty five point eight metres) OD (Ordnance Datum) or thereabout at its western boundary and -35.8m (minus thirty five point eight metres) OD (Ordnance Datum) or thereabouts at its eastern boundary, and the lower surface of the stratum of the sub-soil is at a level equivalent to -53.7m (minus fifty three point seven metres) OD (Ordnance Datum) or thereabout at its western boundary and -53.7m (minus fifty three point seven metres) OD (Ordnance Datum) or thereabouts at its eastern boundary.	225 - London Borough of Southwark	LN203799, TGL40605
GRECT/2148	79.8 square metres of a stratum of subsoil below house and garden (169, Lower Road) where the upper surface of the stratum of the sub-soil is at a level equivalent to -35.8m (minus thirty five point eight metres) OD (Ordnance Datum) or thereabout at its western boundary and -35.8m (minus thirty five point eight metres) OD (Ordnance Datum) or thereabouts at its eastern boundary, and the lower surface of the stratum of the sub-soil is at a level equivalent to -53.7m (minus fifty three point seven metres) OD (Ordnance Datum) or thereabout at its western boundary and -53.7m (minus fifty three point seven metres) OD (Ordnance Datum) or thereabouts at its eastern boundary.	226 - London Borough of Southwark	LN203780
GRECT/2149	89.9 square metres of a stratum of subsoil below house and garden (171, Lower Road) where the upper surface of the stratum of the sub-soil is at a level equivalent to -35.8m (minus thirty five point eight metres) OD (Ordnance Datum) or thereabout at its western boundary and -35.8m (minus thirty five point eight metres) OD (Ordnance Datum) or thereabouts at its eastern boundary, and the lower surface of the stratum of the sub-soil is at a level equivalent to -53.7m (minus fifty three point seven metres) OD (Ordnance Datum) or thereabout at its western boundary and -53.7m (minus fifty three point seven metres) OD (Ordnance Datum) or thereabouts at its eastern boundary.	227 - London Borough of Southwark	SGL354340, TGL295333

	Datum) or thereabout at its western boundary and -53.7m (minus fifty three point seven metres) OD (Ordnance Datum) or thereabouts at its eastern boundary.		
GRECT/2191	103.5 square metres of a stratum of subsoil below flats (Husborne House) where the upper surface of the stratum of the sub-soil is at a level equivalent to -34.7m (minus thirty four point seven metres) OD (Ordnance Datum) or thereabout at its western boundary and -34.7m (minus thirty four point seven metres) OD (Ordnance Datum) or thereabouts at its eastern boundary, and the lower surface of the stratum of the sub-soil is at a level equivalent to -52.6m (minus fifty two point six metres) OD (Ordnance Datum) or thereabout at its western boundary and -52.5m (minus fifty two point five metres) OD (Ordnance Datum) or thereabouts at its eastern boundary.	278 - London Borough of Southwark	SGL242812
GRECT/2192	336.3 square metres of a stratum of subsoil below gardens and grassed areas (Gravelly House and Husborne House, Chilton Grove) where the upper surface of the stratum of the sub-soil is at a level equivalent to -34.7m (minus thirty four point seven metres) OD (Ordnance Datum) or thereabout at its western boundary and -34.7m (minus thirty four point seven metres) OD (Ordnance Datum) or thereabouts at its eastern boundary, and the lower surface of the stratum of the sub-soil is at a level equivalent to -52.6m (minus fifty two point six metres) OD (Ordnance Datum) or thereabout at its western boundary and -52.5m (minus fifty two point five metres) OD (Ordnance Datum) or thereabouts at its eastern boundary.	277 - London Borough of Southwark	SGL242812
GRECT/2204	94.1 square metres of a stratum of subsoil below house and garden (62, Croft Street) where the upper surface of the stratum of the sub-soil is at a level equivalent to -34.5m (minus thirty four point five metres) OD (Ordnance Datum) or thereabout at its western boundary and -34.4m (minus thirty four point four metres) OD (Ordnance Datum) or thereabouts at its eastern boundary, and the lower surface of the stratum of the sub-soil is at a level equivalent to -52.3m (minus fifty two point three metres) OD (Ordnance Datum) or thereabout at its western boundary and -52.3m (minus fifty two point three metres) OD (Ordnance Datum) or thereabouts at its eastern boundary.	26 - London Borough of Lewisham	SGL319483
GRECT/2206	62.2 square metres of a stratum of subsoil below house and garden (58, Croft Street) where the upper surface of the stratum of the sub-soil is at a level equivalent to -34.4m (minus thirty four point four metres) OD (Ordnance Datum) or thereabout at its western boundary and -34.4m (minus thirty four point four metres) OD (Ordnance Datum) or thereabouts at its eastern boundary, and the lower surface of the stratum of the sub-soil is at a level equivalent to -52.3m (minus fifty two point three metres) OD (Ordnance Datum) or thereabout at its western boundary and -52.3m (minus fifty two point three metres) OD (Ordnance Datum) or thereabouts at its eastern boundary.	28 - London Borough of Lewisham	TGL103662
GRECT/2211	731.8 square metres of a stratum of subsoil below hardstanding and private road (Yeoman Street and Naomi Street) where the upper surface of the stratum of the sub-soil is at a level equivalent to -34.3m (minus thirty four point three metres) OD (Ordnance Datum) or thereabout at its western boundary and -34.2m (minus thirty four point two metres) OD (Ordnance Datum) or thereabouts at its eastern boundary, and the lower surface of the stratum of the sub-soil is at a level equivalent to -52.1m (minus fifty two point one metres) OD (Ordnance Datum) or thereabout at its western boundary and -52m (minus fifty two metres) OD (Ordnance Datum) or thereabouts at its eastern boundary.	25 - London Borough of Lewisham	TGL269356
GRECT/2271	81.1 square metres of a stratum of subsoil below shop, flats and garden (211, Deptford High Street) where the upper surface of the stratum of the sub-soil is at a level equivalent to -31.4m (minus thirty one point four metres) OD (Ordnance Datum) or thereabout at its western boundary and -31.4m (minus thirty one point four metres) OD (Ordnance Datum) or thereabouts at its eastern	116 - London Borough of Lewisham	116742, TGL543852

	boundary, and the lower surface of the stratum of the sub-soil is at a level equivalent to -49.2m (minus forty nine point two metres) OD (Ordnance Datum) or thereabout at its western boundary and -49.2m (minus forty nine point two metres) OD (Ordnance Datum) or thereabouts at its eastern boundary.		
GRECT/2273	87.5 square metres of a stratum of subsoil below shop, flats and garden (207, Deptford High Street) where the upper surface of the stratum of the sub-soil is at a level equivalent to -31.4m (minus thirty one point four metres) OD (Ordnance Datum) or thereabout at its western boundary and -31.3m (minus thirty one point three metres) OD (Ordnance Datum) or thereabouts at its eastern boundary, and the lower surface of the stratum of the sub-soil is at a level equivalent to -49.2m (minus forty nine point two metres) OD (Ordnance Datum) or thereabout at its western boundary and -49.2m (minus forty nine point two metres) OD (Ordnance Datum) or thereabouts at its eastern boundary.	118 - London Borough of Lewisham	425839, TGL182043
GRECT/2274	121.1 square metres of a stratum of subsoil below shop, flats and garden (205, Deptford High Street) where the upper surface of the stratum of the sub-soil is at a level equivalent to -31.3m (minus thirty one point three metres) OD (Ordnance Datum) or thereabout at its western boundary and -31.3m (minus thirty one point three metres) OD (Ordnance Datum) or thereabouts at its eastern boundary, and the lower surface of the stratum of the sub-soil is at a level equivalent to -49.2m (minus forty nine point two metres) OD (Ordnance Datum) or thereabout at its western boundary and -49.2m (minus forty nine point two metres) OD (Ordnance Datum) or thereabouts at its eastern boundary.	119 - London Borough of Lewisham	130108
GRECT/2275	76.2 square metres of a stratum of subsoil below shop and flats (203, Deptford High Street) where the upper surface of the stratum of the sub-soil is at a level equivalent to -31.3m (minus thirty one point three metres) OD (Ordnance Datum) or thereabout at its western boundary and -31.3m (minus thirty one point three metres) OD (Ordnance Datum) or thereabouts at its eastern boundary, and the lower surface of the stratum of the sub-soil is at a level equivalent to -49.2m (minus forty nine point two metres) OD (Ordnance Datum) or thereabout at its western boundary and -49.2m (minus forty nine point two metres) OD (Ordnance Datum) or thereabouts at its eastern boundary.	120 - London Borough of Lewisham	303651
GRECT/2276	52.7 square metres of a stratum of subsoil below shop and flats (201, Deptford High Street) where the upper surface of the stratum of the sub-soil is at a level equivalent to -31.3m (minus thirty one point three metres) OD (Ordnance Datum) or thereabout at its western boundary and -31.3m (minus thirty one point three metres) OD (Ordnance Datum) or thereabouts at its eastern boundary, and the lower surface of the stratum of the sub-soil is at a level equivalent to -49.2m (minus forty nine point two metres) OD (Ordnance Datum) or thereabout at its western boundary and -49.1m (minus forty nine point one metres) OD (Ordnance Datum) or thereabouts at its eastern boundary.	121 - London Borough of Lewisham	SGL292715
GRECT/2277	92.8 square metres of a stratum of subsoil below snooker club (197 to 199, Deptford High Street) where the upper surface of the stratum of the sub-soil is at a level equivalent to -31.3m (minus thirty one point three metres) OD (Ordnance Datum) or thereabout at its western boundary and -31.3m (minus thirty one point three metres) OD (Ordnance Datum) or thereabouts at its eastern boundary, and the lower surface of the stratum of the sub-soil is at a level equivalent to -49.2m (minus forty nine point two metres) OD (Ordnance Datum) or thereabout at its western boundary and -49.1m (minus forty nine point one metres) OD (Ordnance Datum) or thereabouts at its eastern boundary.	122 - London Borough of Lewisham	SGL372898

GRECT/2278	48.6 square metres of a stratum of subsoil below public road and footways (Hyde Street) where the upper surface of the stratum of the sub-soil is at a level equivalent to -31.3m (minus thirty one point three metres) OD (Ordnance Datum) or thereabout at its western boundary and -31.3m (minus thirty one point three metres) OD (Ordnance Datum) or thereabouts at its eastern boundary, and the lower surface of the stratum of the sub-soil is at a level equivalent to -49.1m (minus forty nine point one metres) OD (Ordnance Datum) or thereabout at its western boundary and -49.1m (minus forty nine point one metres) OD (Ordnance Datum) or thereabouts at its eastern boundary.	123 - London Borough of Lewisham	Unregistered
GRECT/2279	24.2 square metres of a stratum of subsoil below shop and flats (195, Deptford High Street) where the upper surface of the stratum of the sub-soil is at a level equivalent to -31.3m (minus thirty one point three metres) OD (Ordnance Datum) or thereabout at its western boundary and -31.3m (minus thirty one point three metres) OD (Ordnance Datum) or thereabouts at its eastern boundary, and the lower surface of the stratum of the sub-soil is at a level equivalent to -49.1m (minus forty nine point one metres) OD (Ordnance Datum) or thereabout at its western boundary and -49.1m (minus forty nine point one metres) OD (Ordnance Datum) or thereabouts at its eastern boundary.	124 - London Borough of Lewisham	LN235562, TGL456203
GRECT/2280	27.1 square metres of a stratum of subsoil below shop and flats (191 to 193, Deptford High Street) where the upper surface of the stratum of the sub-soil is at a level equivalent to -31.3m (minus thirty one point three metres) OD (Ordnance Datum) or thereabout at its western boundary and -31.3m (minus thirty one point three metres) OD (Ordnance Datum) or thereabouts at its eastern boundary, and the lower surface of the stratum of the sub-soil is at a level equivalent to -49.1m (minus forty nine point one metres) OD (Ordnance Datum) or thereabout at its western boundary and -49.1m (minus forty nine point one metres) OD (Ordnance Datum) or thereabouts at its eastern boundary.	125 - London Borough of Lewisham	SGL321284
GRECT/2281	0.5 square metres of a stratum of subsoil below shop and flats (189, Deptford High Street) where the upper surface of the stratum of the sub-soil is at a level equivalent to -31.2m (minus thirty one point two metres) OD (Ordnance Datum) or thereabout at its western boundary and -31.2m (minus thirty one point two metres) OD (Ordnance Datum) or thereabouts at its eastern boundary, and the lower surface of the stratum of the sub-soil is at a level equivalent to -49.1m (minus forty nine point one metres) OD (Ordnance Datum) or thereabout at its western boundary and -49.1m (minus forty nine point one metres) OD (Ordnance Datum) or thereabouts at its eastern boundary.	126 - London Borough of Lewisham	LN236508
GRECT/2282	617.6 square metres of a stratum of subsoil below basement, public road and footways (Deptford High Street) where the upper surface of the stratum of the sub-soil is at a level equivalent to -31.3m (minus thirty one point three metres) OD (Ordnance Datum) or thereabout at its western boundary and -31.2m (minus thirty one point two metres) OD (Ordnance Datum) or thereabouts at its eastern boundary, and the lower surface of the stratum of the sub-soil is at a level equivalent to -49.2m (minus forty nine point two metres) OD (Ordnance Datum) or thereabout at its western boundary and -49.1m (minus forty nine point one metres) OD (Ordnance Datum) or thereabouts at its eastern boundary.	129 - London Borough of Lewisham	Unregistered
GRECT/2283	0.1 square metres of a stratum of subsoil below shop and flats (188, Deptford High Street) where the upper surface of the stratum of the sub-soil is at a level equivalent to -31.3m (minus thirty one point three metres) OD (Ordnance Datum) or thereabout at its western boundary and -31.3m (minus thirty one point three metres) OD (Ordnance Datum) or thereabouts at its eastern boundary, and the lower surface of the stratum of the sub-soil is at a level equivalent to -49.1m (minus forty nine point one metres) OD (Ordnance Datum) or thereabouts at its eastern boundary.	131 - London Borough of Lewisham	SGL86422, TGL424297

	Datum) or thereabout at its western boundary and -49.1m (minus forty nine point one metres) OD (Ordnance Datum) or thereabouts at its eastern boundary.		
GRECT/2284	5.6 square metres of a stratum of subsoil below shop and flats (186, Deptford High Street) where the upper surface of the stratum of the sub-soil is at a level equivalent to -31.3m (minus thirty one point three metres) OD (Ordnance Datum) or thereabout at its western boundary and -31.2m (minus thirty one point two metres) OD (Ordnance Datum) or thereabouts at its eastern boundary, and the lower surface of the stratum of the sub-soil is at a level equivalent to -49.1m (minus forty nine point one metres) OD (Ordnance Datum) or thereabout at its western boundary and -49.1m (minus forty nine point one metres) OD (Ordnance Datum) or thereabouts at its eastern boundary.	132 - London Borough of Lewisham	448364
GRECT/2285	15 square metres of a stratum of subsoil below shop and flats (184, Deptford High Street) where the upper surface of the stratum of the sub-soil is at a level equivalent to -31.2m (minus thirty one point two metres) OD (Ordnance Datum) or thereabout at its western boundary and -31.2m (minus thirty one point two metres) OD (Ordnance Datum) or thereabouts at its eastern boundary, and the lower surface of the stratum of the sub-soil is at a level equivalent to -49.1m (minus forty nine point one metres) OD (Ordnance Datum) or thereabout at its western boundary and -49.1m (minus forty nine point one metres) OD (Ordnance Datum) or thereabouts at its eastern boundary.	133 - London Borough of Lewisham	323372, TGL379095
GRECT/2286	30.9 square metres of a stratum of subsoil below shop and flats (182, Deptford High Street) where the upper surface of the stratum of the sub-soil is at a level equivalent to -31.2m (minus thirty one point two metres) OD (Ordnance Datum) or thereabout at its western boundary and -31.2m (minus thirty one point two metres) OD (Ordnance Datum) or thereabouts at its eastern boundary, and the lower surface of the stratum of the sub-soil is at a level equivalent to -49.1m (minus forty nine point one metres) OD (Ordnance Datum) or thereabout at its western boundary and -49.1m (minus forty nine point one metres) OD (Ordnance Datum) or thereabouts at its eastern boundary.	134 - London Borough of Lewisham	323730
GRECT/2287	39.5 square metres of a stratum of subsoil below shop and flats (180, Deptford High Street) where the upper surface of the stratum of the sub-soil is at a level equivalent to -31.2m (minus thirty one point two metres) OD (Ordnance Datum) or thereabout at its western boundary and -31.2m (minus thirty one point two metres) OD (Ordnance Datum) or thereabouts at its eastern boundary, and the lower surface of the stratum of the sub-soil is at a level equivalent to -49.1m (minus forty nine point one metres) OD (Ordnance Datum) or thereabout at its western boundary and -49.1m (minus forty nine point one metres) OD (Ordnance Datum) or thereabouts at its eastern boundary.	135 - London Borough of Lewisham	SGL459422, TGL293838, TGL225466
GRECT/2288	51.4 square metres of a stratum of subsoil below shop and flats (178, Deptford High Street) where the upper surface of the stratum of the sub-soil is at a level equivalent to -31.2m (minus thirty one point two metres) OD (Ordnance Datum) or thereabout at its western boundary and -31.2m (minus thirty one point two metres) OD (Ordnance Datum) or thereabouts at its eastern boundary, and the lower surface of the stratum of the sub-soil is at a level equivalent to -49.1m (minus forty nine point one metres) OD (Ordnance Datum) or thereabout at its western boundary and -49.1m (minus forty nine point one metres) OD (Ordnance Datum) or thereabouts at its eastern boundary.	136 - London Borough of Lewisham	307151, TGL293792, TGL86372
GRECT/2289	69.4 square metres of a stratum of subsoil below shop and flats (176, Deptford High Street) where the upper surface of the stratum of the sub-soil is at a level equivalent to -31.2m (minus thirty one point two metres) OD (Ordnance Datum) or thereabout at its western boundary and -31.2m (minus thirty one point two metres) OD (Ordnance Datum) or thereabouts at its eastern boundary.	137 - London Borough of Lewisham	235617, TGL411347

	OD (Ordnance Datum) or thereabouts at its eastern boundary, and the lower surface of the stratum of the sub-soil is at a level equivalent to -49.1m (minus forty nine point one metres) OD (Ordnance Datum) or thereabout at its western boundary and -49.1m (minus forty nine point one metres) OD (Ordnance Datum) or thereabouts at its eastern boundary.		
GRECT/2290	90.5 square metres of a stratum of subsoil below shop and flats (174, Deptford High Street) where the upper surface of the stratum of the sub-soil is at a level equivalent to -31.2m (minus thirty one point two metres) OD (Ordnance Datum) or thereabout at its western boundary and -31.2m (minus thirty one point two metres) OD (Ordnance Datum) or thereabouts at its eastern boundary, and the lower surface of the stratum of the sub-soil is at a level equivalent to -49.1m (minus forty nine point one metres) OD (Ordnance Datum) or thereabout at its western boundary and -49m (minus forty nine metres) OD (Ordnance Datum) or thereabouts at its eastern boundary.	139 - London Borough of Lewisham	TGL314251, TGL514609
GRECT/2291	76.7 square metres of a stratum of subsoil below shop and flats (172, Deptford High Street) where the upper surface of the stratum of the sub-soil is at a level equivalent to -31.2m (minus thirty one point two metres) OD (Ordnance Datum) or thereabout at its western boundary and -31.2m (minus thirty one point two metres) OD (Ordnance Datum) or thereabouts at its eastern boundary, and the lower surface of the stratum of the sub-soil is at a level equivalent to -49.1m (minus forty nine point one metres) OD (Ordnance Datum) or thereabout at its western boundary and -49m (minus forty nine metres) OD (Ordnance Datum) or thereabouts at its eastern boundary.	140 - London Borough of Lewisham	TGL2627
GRECT/2292	73.1 square metres of a stratum of subsoil below shop and flats (170, Deptford High Street) where the upper surface of the stratum of the sub-soil is at a level equivalent to -31.2m (minus thirty one point two metres) OD (Ordnance Datum) or thereabout at its western boundary and -31.2m (minus thirty one point two metres) OD (Ordnance Datum) or thereabouts at its eastern boundary, and the lower surface of the stratum of the sub-soil is at a level equivalent to -49m (minus forty nine metres) OD (Ordnance Datum) or thereabout at its western boundary and -49m (minus forty nine metres) OD (Ordnance Datum) or thereabouts at its eastern boundary.	143 - London Borough of Lewisham	TGL4712
GRECT/2293	21.7 square metres of a stratum of subsoil below building and yard (8, Mary Ann Gardens) where the upper surface of the stratum of the sub-soil is at a level equivalent to -31.2m (minus thirty one point two metres) OD (Ordnance Datum) or thereabout at its western boundary and -31.1m (minus thirty one point one metres) OD (Ordnance Datum) or thereabouts at its eastern boundary, and the lower surface of the stratum of the sub-soil is at a level equivalent to -49m (minus forty nine metres) OD (Ordnance Datum) or thereabout at its western boundary and -49m (minus forty nine metres) OD (Ordnance Datum) or thereabouts at its eastern boundary.	142 - London Borough of Lewisham	TGL99563
GRECT/2294	78.9 square metres of a stratum of subsoil below public road and footways (Mary Ann Gardens) where the upper surface of the stratum of the sub-soil is at a level equivalent to -31.2m (minus thirty one point two metres) OD (Ordnance Datum) or thereabout at its western boundary and -31.1m (minus thirty one point one metres) OD (Ordnance Datum) or thereabouts at its eastern boundary, and the lower surface of the stratum of the sub-soil is at a level equivalent to -49m (minus forty nine metres) OD (Ordnance Datum) or thereabout at its western boundary and -49m (minus forty nine metres) OD (Ordnance Datum) or thereabouts at its eastern boundary.	144 - London Borough of Lewisham	Unregistered


GRECT/2295	382.1 square metres of a stratum of subsoil below flats, shops and units (166 to 168, Deptford High Street) where the upper surface of the stratum of the sub-soil is at a level equivalent to -31.1m (minus thirty one point one metres) OD (Ordnance Datum) or thereabout at its western boundary and -31m (minus thirty one metres) OD (Ordnance Datum) or thereabouts at its eastern boundary, and the lower surface of the stratum of the sub-soil is at a level equivalent to -49m (minus forty nine metres) OD (Ordnance Datum) or thereabout at its western boundary and -48.9m (minus forty eight point nine metres) OD (Ordnance Datum) or thereabouts at its eastern boundary.	145 - London Borough of Lewisham	TGL459818, SGL363661, TGL281592, TGL449837, TGL459818, TGL485683, TGL489171, TGL522128, TGL162109
GRECT/2390	1.3 square metres of a stratum of subsoil below garden (171, Lower Road) where the upper surface of the stratum of the sub-soil is at a level equivalent to -35.8m (minus thirty five point eight metres) OD (Ordnance Datum) or thereabout at its western boundary and -35.8m (minus thirty five point eight metres) OD (Ordnance Datum) or thereabouts at its eastern boundary, and the lower surface of the stratum of the sub-soil is at a level equivalent to -53.7m (minus fifty three point seven metres) OD (Ordnance Datum) or thereabout at its western boundary and -53.7m (minus fifty three point seven metres) OD (Ordnance Datum) or thereabouts at its eastern boundary.	228 - London Borough of Southwark	SGL354340, TGL295333
GRECT/2409	790.2 square metres of a stratum of subsoil below public road and footways (Lower Road, A200) where the upper surface of the stratum of the sub-soil is at a level equivalent to -36m (minus thirty six metres) OD (Ordnance Datum) or thereabout at its western boundary and -35.8m (minus thirty five point eight metres) OD (Ordnance Datum) or thereabouts at its eastern boundary, and the lower surface of the stratum of the sub-soil is at a level equivalent to -53.9m (minus fifty three point nine metres) OD (Ordnance Datum) or thereabout at its western boundary and -53.7m (minus fifty three point seven metres) OD (Ordnance Datum) or thereabouts at its eastern boundary.	218 - London Borough of Southwark	Unregistered
GRECT/2413	1.5 square metres of a stratum of subsoil below basement, public road and footways (Deptford High Street) where the upper surface of the stratum of the sub-soil is at a level equivalent to -31.2m (minus thirty one point two metres) OD (Ordnance Datum) or thereabout at its western boundary and -31.2m (minus thirty one point two metres) OD (Ordnance Datum) or thereabouts at its eastern boundary, and the lower surface of the stratum of the sub-soil is at a level equivalent to -49.1m (minus forty nine point one metres) OD (Ordnance Datum) or thereabout at its western boundary and -49.1m (minus forty nine point one metres) OD (Ordnance Datum) or thereabouts at its eastern boundary.	129 - London Borough of Lewisham	TGL379095
GRECT/2414	4.6 square metres of a stratum of subsoil below building and yard (8, Mary Ann Gardens) where the upper surface of the stratum of the sub-soil is at a level equivalent to -31.2m (minus thirty one point two metres) OD (Ordnance Datum) or thereabout at its western boundary and -31.1m (minus thirty one point one metres) OD (Ordnance Datum) or thereabouts at its eastern boundary, and the lower surface of the stratum of the sub-soil is at a level equivalent to -49m (minus forty nine metres) OD (Ordnance Datum) or thereabout at its western boundary and -49m (minus forty nine metres) OD (Ordnance Datum) or thereabouts at its eastern boundary.	143- London Borough of Lewisham	TGL99563
MNTLD/2037	178.4 square metres of a stratum of subsoil below flats (Chinnocks Wharf), underground car parking, and hardstanding where the upper surface of the stratum of the sub-soil is at a level equivalent to -41.5m (minus forty one point five metres) OD (Ordnance Datum) or thereabout at its western boundary and -41.5m (minus forty one point five metres) OD (Ordnance Datum) or thereabouts at its eastern boundary, and the lower surface of the stratum of the sub-soil is at a level equivalent to -62.4m (minus sixty two point	47 - London Borough of Tower Hamlets	EGL244272, EGL333488, EGL471119

	four metres) OD (Ordnance Datum) or thereabout at its western boundary and -62.5m (minus sixty two point five metres) OD (Ordnance Datum) or thereabouts at its eastern boundary.		
MNTLD/2038	0.2 square metres of a stratum of subsoil below flats (Chinnocks Wharf), underground car parking, and hardstanding where the upper surface of the stratum of the sub-soil is at a level equivalent to -41.5m (minus forty one point five metres) OD (Ordnance Datum) or thereabout at its western boundary and -41.5m (minus forty one point five metres) OD (Ordnance Datum) or thereabouts at its eastern boundary, and the lower surface of the stratum of the sub-soil is at a level equivalent to -62.5m (minus sixty two point five metres) OD (Ordnance Datum) or thereabout at its western boundary and -62.5m (minus sixty two point five metres) OD (Ordnance Datum) or thereabouts at its eastern boundary.	47 - London Borough of Tower Hamlets	EGL244272, EGL333488, EGL471119
MNTLD/2100	99.5 square metres of a stratum of subsoil below flats, hardstanding and shrubbery (Denmark Wharf) where the upper surface of the stratum of the sub-soil is at a level equivalent to -42.3m (minus forty two point three metres) OD (Ordnance Datum) or thereabout at its western boundary and -42.4m (minus forty two point four metres) OD (Ordnance Datum) or thereabouts at its eastern boundary, and the lower surface of the stratum of the sub-soil is at a level equivalent to -63.3m (minus sixty three point three metres) OD (Ordnance Datum) or thereabout at its western boundary and -63.3m (minus sixty three point three metres) OD (Ordnance Datum) or thereabouts at its eastern boundary.	115 - London Borough of Tower Hamlets	411379
MNTLD/2198	3.2 square metres of a stratum of subsoil below footpath and hardstanding (Copenhagen Place) where the upper surface of the stratum of the sub-soil is at a level equivalent to -42.3m (minus forty two point three metres) OD (Ordnance Datum) or thereabout at its western boundary and -42.3m (minus forty two point three metres) OD (Ordnance Datum) or thereabouts at its eastern boundary, and the lower surface of the stratum of the sub-soil is at a level equivalent to -63.3m (minus sixty three point three metres) OD (Ordnance Datum) or thereabout at its western boundary and -63.3m (minus sixty three point three metres) OD (Ordnance Datum) or thereabouts at its eastern boundary.	114 - London Borough of Tower Hamlets	Unregistered

EXECUTION PAGE

The Common seal of **Thames Water**)
Utilities Limited was affixed in the)
presence of:)





..... J. SANDISON
Authorised Signatory


9th May 2024
.....
Date

This map is reproduced from Ordnance Survey material with permission of Ordnance Survey on behalf of the Controller of Her Majesty's Stationery Office © Crown Copyright. Unauthorized reproduction infringes Crown Copyright and may lead to prosecution or civil proceedings. 100022432 2024



The Common seal of Thames Water Utilities Limited was affixed in the presence of:
[Signature]
 Authorised Signatory
 Dated: 9th May 2024

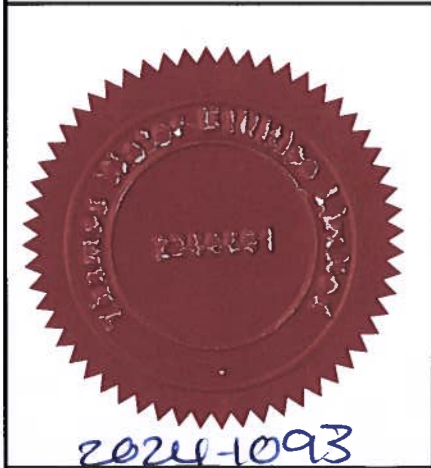
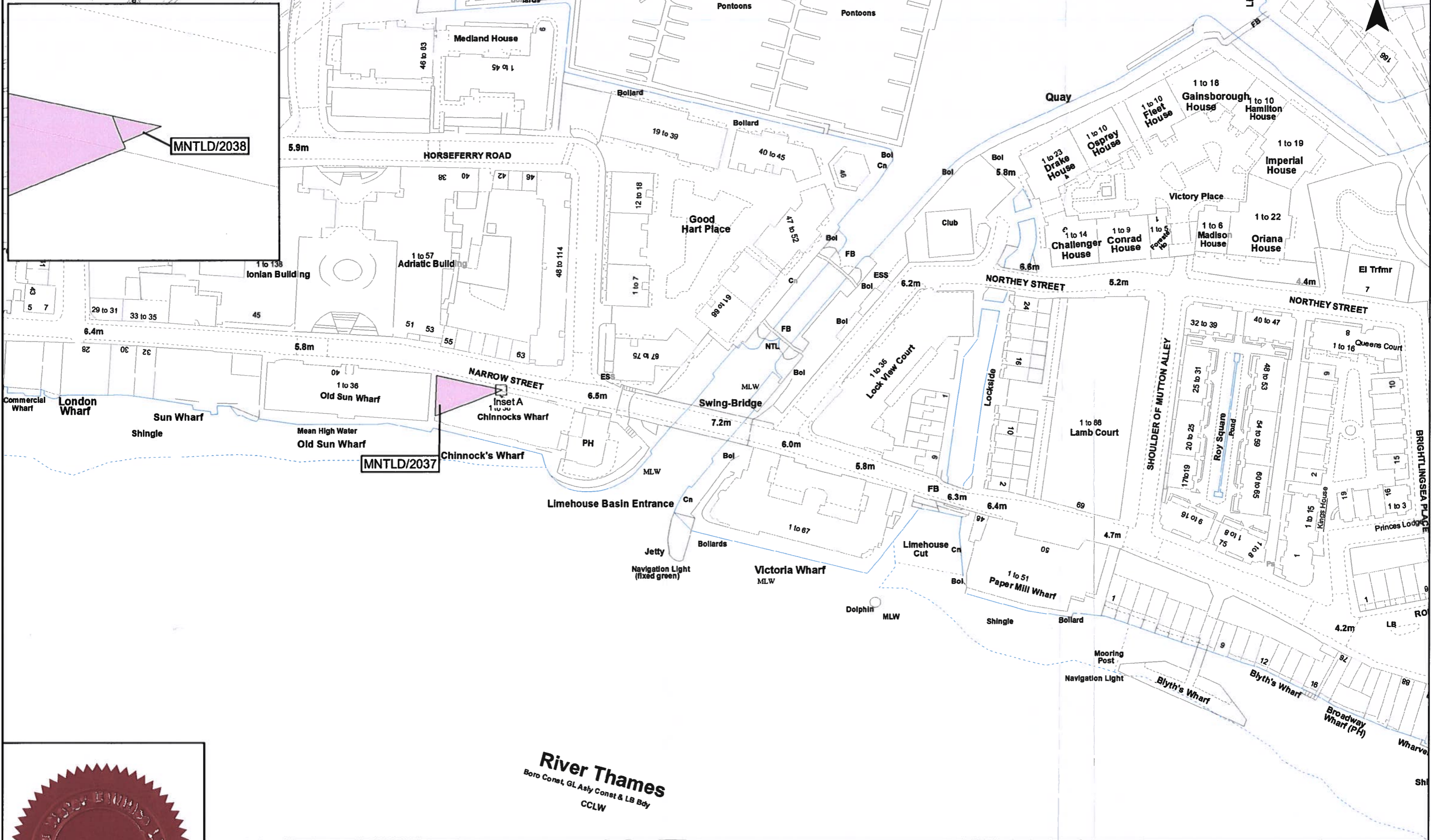
Key
 Permanent Acquisition of Land

0 30 60 Metres		wsp	 Tideway		
Rev	Revision Date / Revision Details			Drawn	Check
A	07/03/2024	AB	JH	LC	VB

Date: 29/02/2024
 Scale at A3 1:1,250

The Thames Water Utilities Limited (Thames Tideway Tunnel) Order 2014 (AS AMENDED) SI 2014 NO 2384
 Drawing Title
 Plan referred to in General Vesting Declaration No. 33 of The Thames Water Utilities Limited (Thames Tideway Tunnel) Order 2014 (AS AMENDED) SI 2014 NO 2384
 For identification only
 Document Reference
 70054885-NTC-GVD-TR1-GVD33-0001

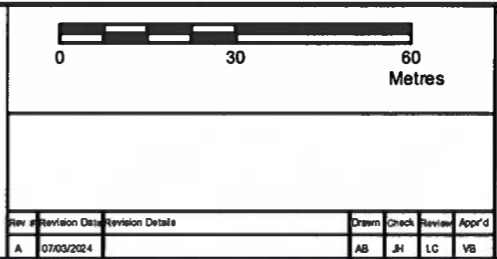
This map is reproduced from Ordnance Survey material with permission of Ordnance Survey on behalf of the Controller of Her Majesty's Stationery Office © Crown Copyright. Unauthorized reproduction infringes Crown Copyright and may lead to prosecution or civil proceedings. 100022432 2024



The Common seal of Thames Water Utilities Limited was affixed in the presence of:
J. SANDISON
 Authorised Signatory
 Dated: 9th May 2024

River Thames
 Boro Const, GL Asly Const & LB Bdy
 CCLW

Key
 Permanent Acquisition of Land



Tideway

Date: 29/02/2024

Scale at A3
1:1,250

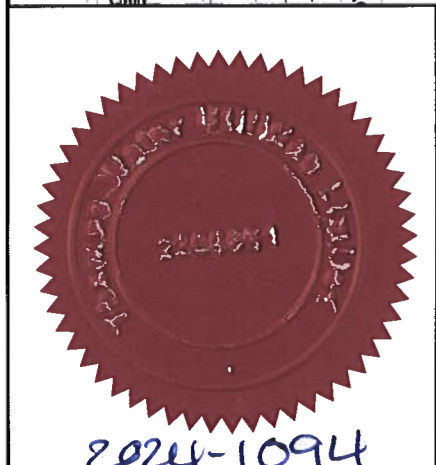
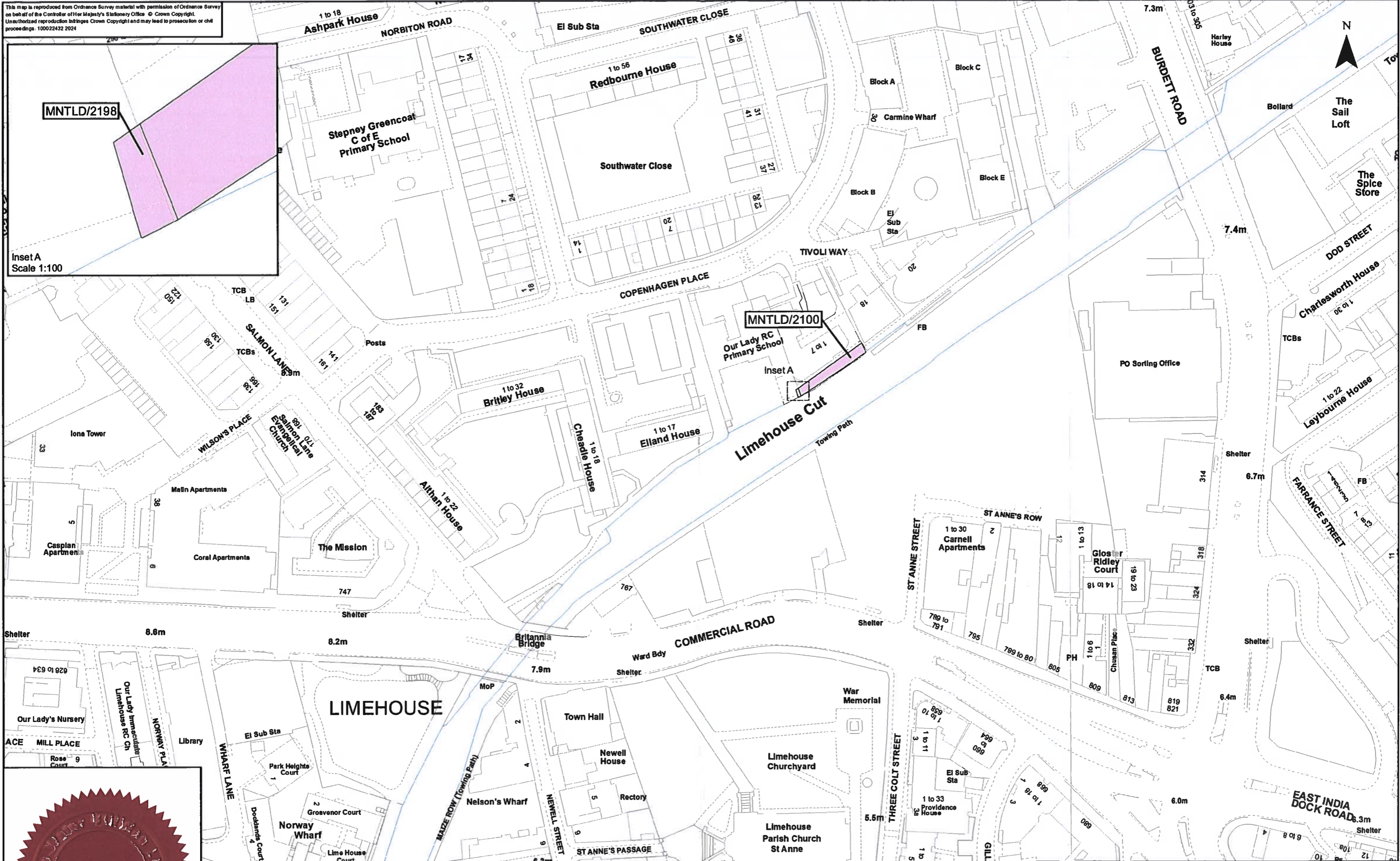
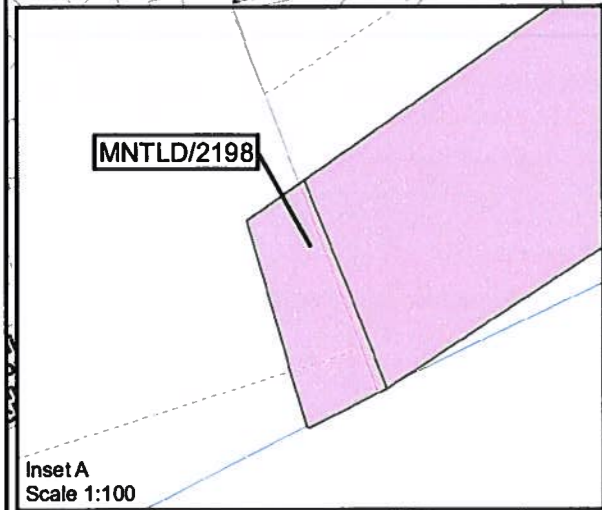
The Thames Water Utilities Limited (Thames Tideway Tunnel) Order 2014 (AS AMENDED) SI 2014 NO 2384

Plan referred to in General Vesting Declaration No. 33 of The Thames Water Utilities Limited (Thames Tideway Tunnel) Order 2014 (AS AMENDED) SI 2014 NO 2384

For identification only

Document Reference
70054885-NTC-GVD-TR1-GVD33-0002

This map is reproduced from Ordnance Survey material with permission of Ordnance Survey on behalf of the Controller of Her Majesty's Stationery Office © Crown Copyright. Unauthorized reproduction infringes Crown Copyright and may lead to prosecution or civil proceedings. 100022432 2024



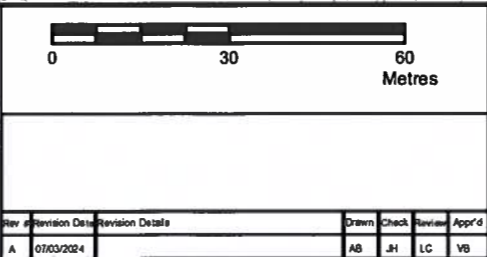
The Common seal of Thames Water Utilities Limited was affixed in the presence of:

J. Anderson
Authorised Signatory

Dated: 9th May 2024

Key

Permanent Acquisition of Land



The Thames Water Utilities Limited (Thames Tideway Tunnel) Order 2014 (AS AMENDED) SI 2014 NO 2384

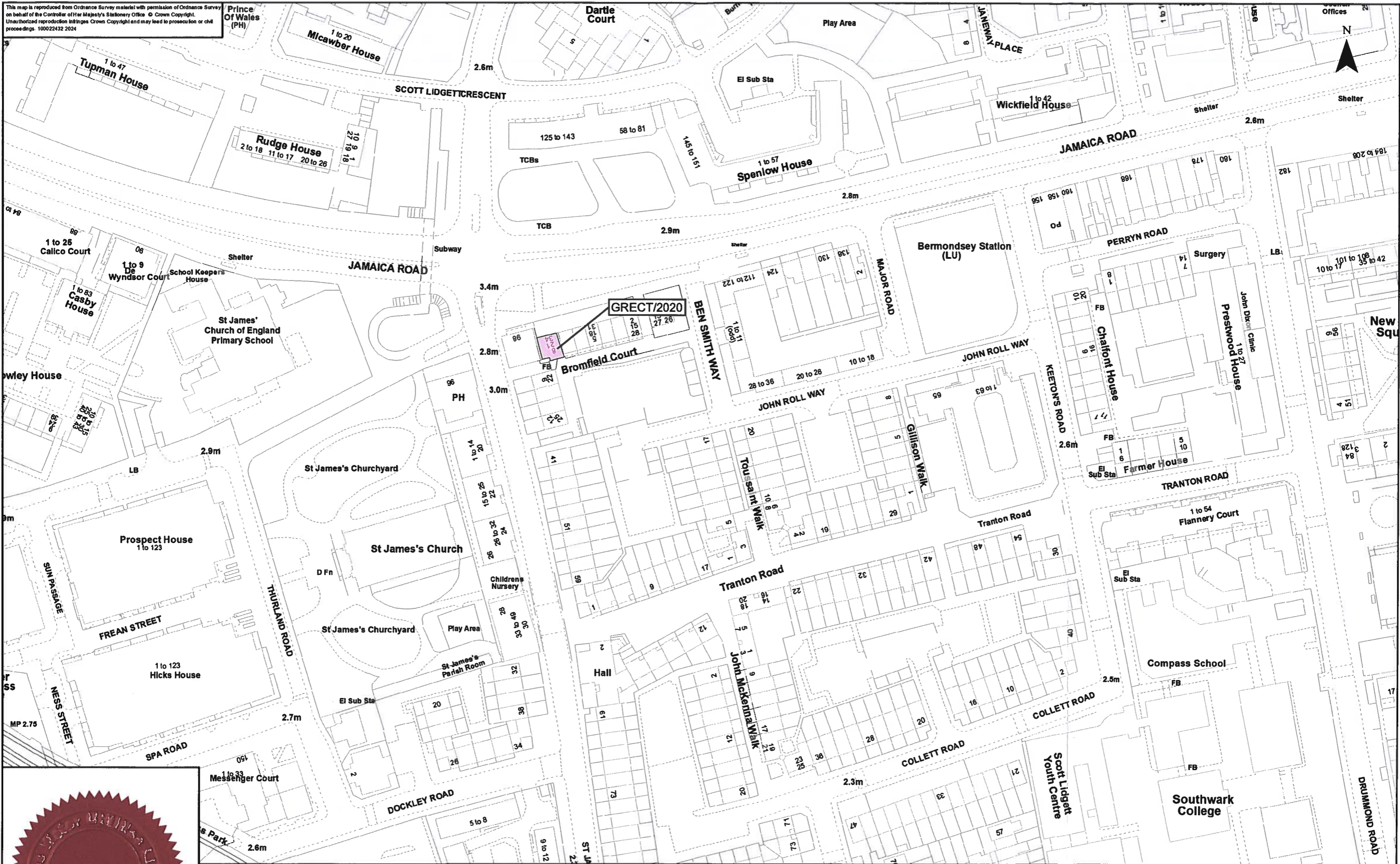
Plan referred to in General Vesting Declaration No. 33 of The Thames Water Utilities Limited (Thames Tideway Tunnel) Order 2014 (AS AMENDED) SI 2014 NO 2384

For identification only

Document Reference
70054885-NTC-GVD-TR1-GVD33-0003

This map is reproduced from Ordnance Survey material with permission of Ordnance Survey on behalf of the Controller of Her Majesty's Stationery Office © Crown Copyright. Unauthorised reproduction infringes Crown Copyright and may lead to prosecution or civil proceedings. 100022432 2024

Prince Of Wales (PH)



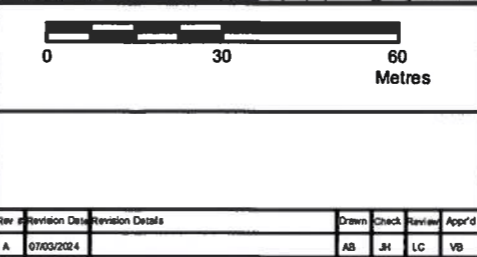
The Common seal of Thames Water Utilities Limited was affixed in the presence of:

J. SANDISON
 Authorised Signatory

Dated: *9th May 2024*

Key

Permanent Acquisition of Land



Date: 29/02/2024

Scale at A3
1:1,250

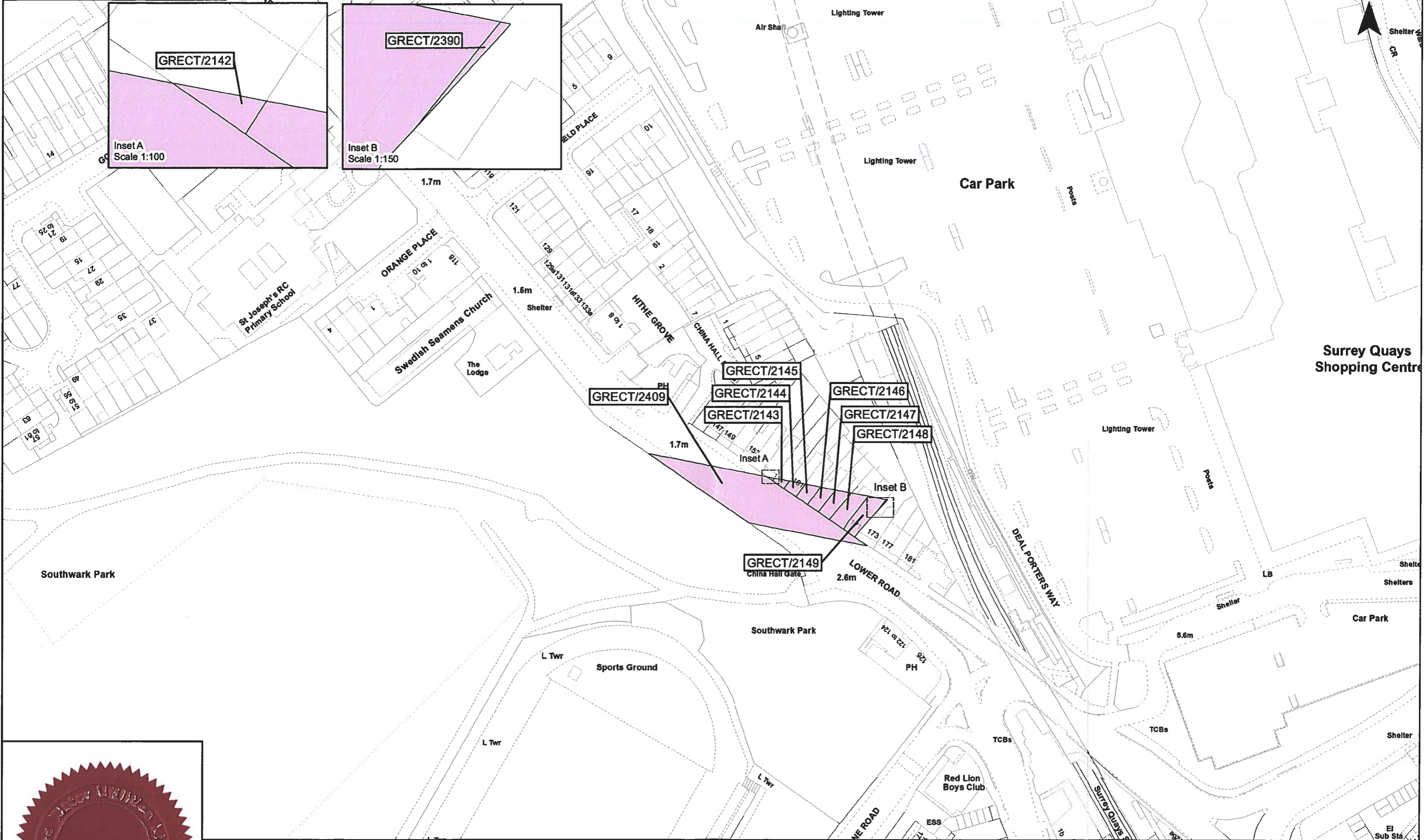
Job Title: The Thames Water Utilities Limited (Thames Tideway Tunnel) Order 2014 (AS AMENDED) SI 2014 NO 2384

Drawing Title: Plan referred to in General Vesting Declaration No. 33 of The Thames Water Utilities Limited (Thames Tideway Tunnel) Order 2014 (AS AMENDED) SI 2014 NO 2384

Status: For identification only

Document Reference: 70054885-NTC-GVD-TR1-GVD33-0004

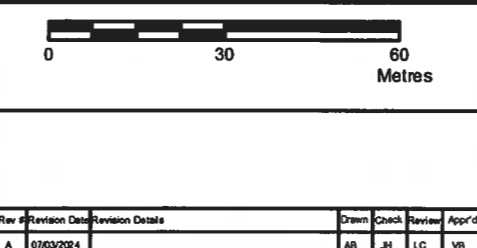
This map is reproduced from Ordnance Survey material with permission of Ordnance Survey on behalf of the Controller of Her Majesty's Stationery Office © Crown Copyright. Unauthorized reproduction infringes Crown Copyright and may lead to prosecution or civil proceedings. 100022432 2024



The Common seal of Thames Water Utilities Limited was affixed in the presence of:
J. SANDISON
 Authorised Signatory
 Dated: *9th May 2024*

Key

Permanent Acquisition of Land



Date: 29/02/2024

Scale at A3: 1:1,250

Job Title: The Thames Water Utilities Limited (Thames Tideway Tunnel) Order 2014 (AS AMENDED) SI 2014 NO 2384


Drawing Title: Plan referred to in General Vesting Declaration No. 33 of The Thames Water Utilities Limited (Thames Tideway Tunnel) Order 2014 (AS AMENDED) SI 2014 NO 2384

Notes: For identification only

Document Reference: 70054885-NTC-GVD-TR1-GVD33-0005


This map is reproduced from Ordnance Survey material with permission of Ordnance Survey on behalf of the Controller of Her Majesty's Stationery Office © Crown Copyright. Unauthorized reproduction infringes Crown Copyright and may lead to prosecution or civil proceedings. 100022432 2024



The Common seal of Thames Water Utilities Limited was affixed in the presence of:

 Authorised Signatory
 Dated: 9th May 2024

Rev #	Revision Date	Revision Details	Drawn	Check	Review	Appr'd
A	07/03/2024		AB	JH	LC	VB

Key

 Permanent Acquisition of Land

Scale: 0, 30, 60 Metres

WSP

Thames Water

Tideway

Date: 29/02/2024

Scale at A3: 1:1,250

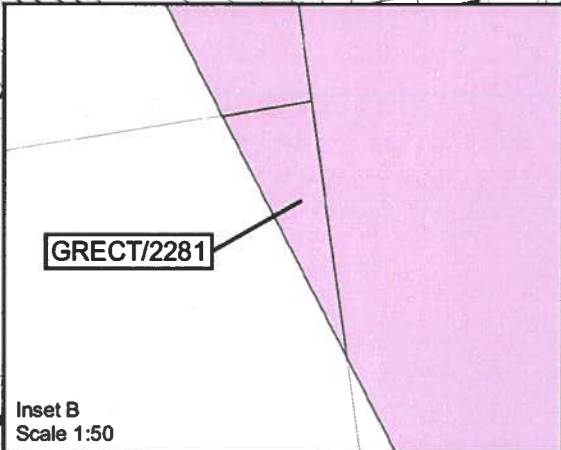
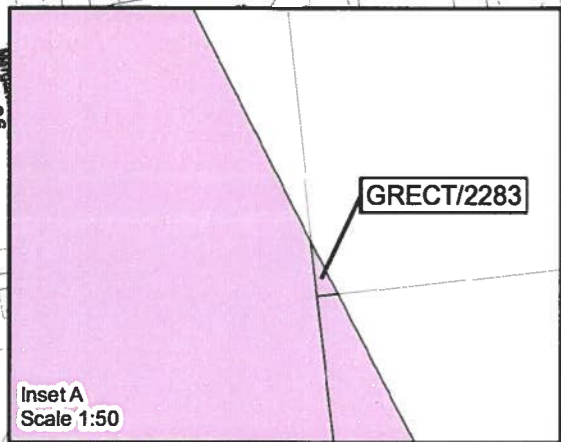
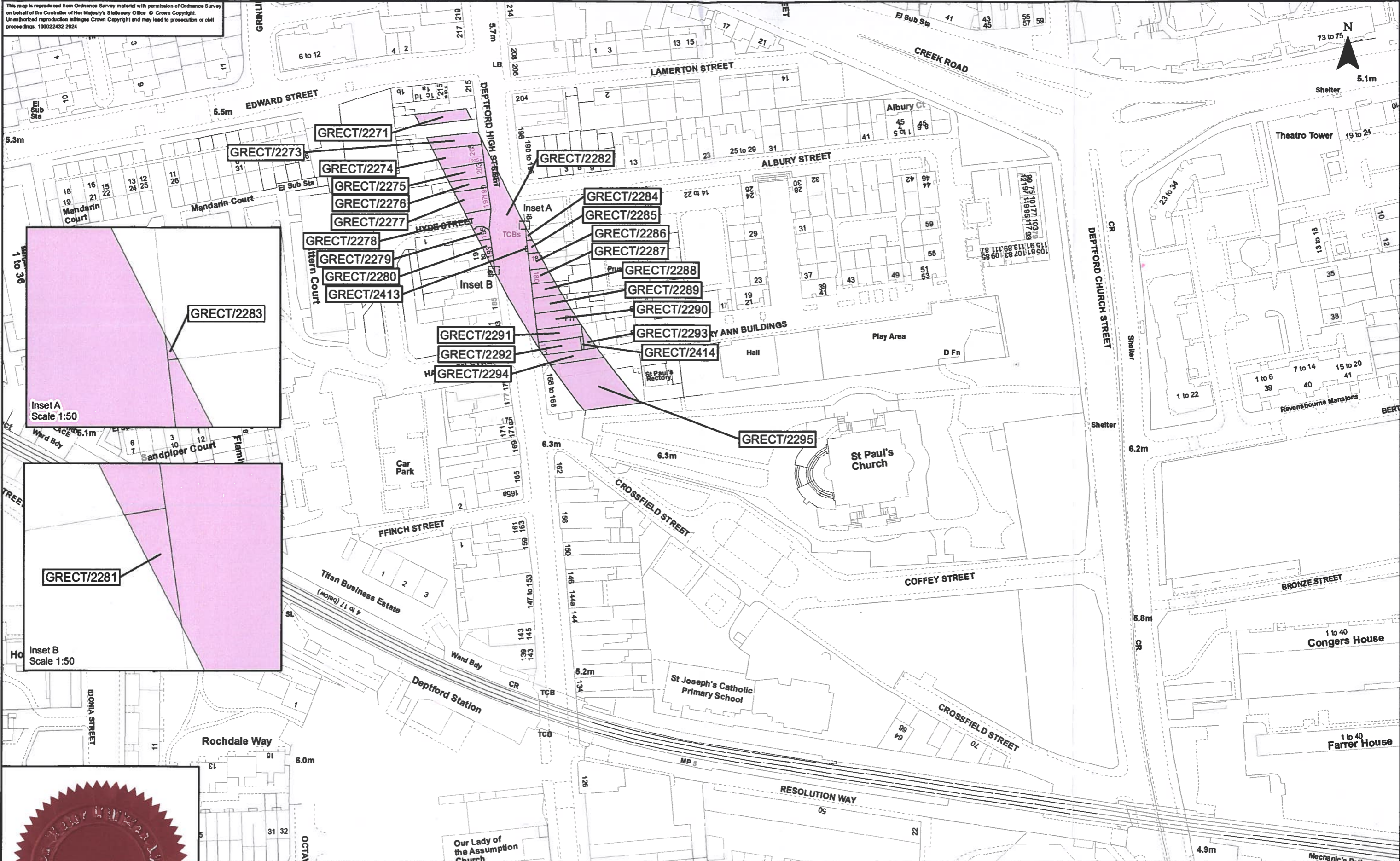
The Thames Water Utilities Limited (Thames Tideway Tunnel) Order 2014 (AS AMENDED) SI 2014 NO 2384

Plan referred to in General Vesting Declaration No. 33 of The Thames Water Utilities Limited (Thames Tideway Tunnel) Order 2014 (AS AMENDED) SI 2014 NO 2384

For identification only

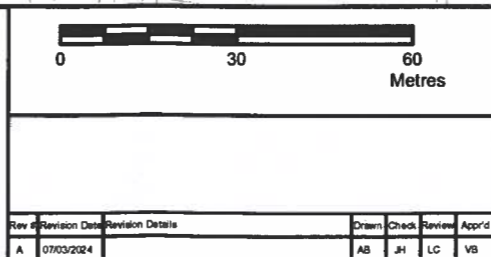
Document Reference: 70054885-NTC-GVD-TR1-GVD33-0008

This map is reproduced from Ordnance Survey material with permission of Ordnance Survey on behalf of the Controller of Her Majesty's Stationery Office © Crown Copyright. Unauthorised reproduction infringes Crown Copyright and may lead to prosecution or civil proceedings. 100022432 2024



The Common seal of Thames Water Utilities Limited was affixed in the presence of:
J. Anderson
 Authorised Signatory
 Dated: 9th May 2024

Key
 Permanent Acquisition of Land



Job Title
 The Thames Water Utilities Limited (Thames Tideway Tunnel) Order 2014 (AS AMENDED) SI 2014 NO 2384
 Drawing Title
 Plan referred to in General Vesting Declaration No. 33 of The Thames Water Utilities Limited (Thames Tideway Tunnel) Order 2014 (AS AMENDED) SI 2014 NO. 2384
 Status: For identification only
 Document Reference
 70054885-NTC-GVD-TR1-GVD33-0007

Date: 07/03/2024
 Scale at A3
 1:1,250

Rev	Revision Date	Revision Details	Drawn	Check	Review	App'd
A	07/03/2024		AB	JH	LC	VB