

THE THAMES WATER UTILITIES LIMITED (THAMES TIDEWAY TUNNEL) ORDER 2014 (AS AMENDED)¹ SI 2014 NO.2384

GENERAL VESTING DECLARATION No. 41

This GENERAL VESTING DECLARATION NO. 41 is made the 17 day of July 2024 by Thames Water Utilities Limited ("Thames Water").

WHEREAS:

- 1 On 3 September 2014 an order entitled The Thames Water Utilities Limited (Thames Tideway Tunnel) Order 2014 (as amended) SI 2014 No.2384 ("the Order") was made (and came into force on 24 September 2014) by the Secretaries of State for Communities and Local Government and Environment, Food and Rural Affairs under the powers conferred on them by the Planning Act 2008 authorising Thames Water to acquire the land specified in the Schedule hereto.
- 2 Notice of the making/confirmation of the Order was first published in accordance with section 134 of the Planning Act 2008 on 19 September 2014.
- 3 Preliminary notice of the intention to make a general vesting declaration in respect of any of the land described in the Schedule hereto was published on **19 July 2023, 24 November 2023 and 26 April 2024** in accordance with section 3 of the Compulsory Purchase (Vesting Declarations) Act 1981 ("the 1981 Act")², as modified by Article 34 of the Order.
- 4 That preliminary notice included the particulars specified in section 3(3) of the 1981 Act, as modified by Article 34 of the Order.
- 5 The notice referred to in (4) above specified the period of two months beginning with the date of its first publication as the period before the end of which this general vesting declaration could not be executed.

NOW THIS DEED WITNESSETH that, in exercise of the powers conferred on them by the Order and section 4 of the 1981 Act, Thames Water hereby declare:

Save in so far as they comprise or affect interests of Excluded Persons (listed in column 5 of the Schedule), the land described in the Schedule hereto being part of the land authorised to be acquired by the Order and more particularly delineated on the plans annexed hereto, together with the right to enter upon and take possession of the land shall vest in the Thames Water as from the end of the period of 28 days from the date on which the service of notices required by section 6 of the 1981 Act and in accordance with Article 34 of the Order is completed.

¹ The Order has been amended by (1) SI 2015/723 issued on 17 March 2015; (2) SI 2017/659 issued on 16 May 2017; (3) SI 2018/1262 issued 29 November 2018; (4) Notices of Variation Nos.1 and 2 Issued on 17 March 2015 and 17 August 2017 respectively in respect of the Deemed Marine Licence; (5) SI 2020/268 issued on 10 March 2020; and (6) SI 2020/862 issued on 13 August 2020.

² The Version of the 1981 Act is the version that applied immediately prior to amendments brought in by the Housing and Planning Bill on 13 October 2015 and as modified by the Order.

SCHEDULE

The land

<u>Reference number on attached notice plan</u>	<u>Description of the land</u>	<u>Associated Book of Reference plot number</u>	<u>Title Number</u>	<u>Excluded Persons</u>
ALBEF/2001	255.8 square metres of river (River Thames), foreshore and bed thereof	15 - London Borough of Lambeth	TGL599953	
ALBEF/2017	458.5 square metres of river (River Thames), foreshore and bed thereof	28 - London Borough of Lambeth	TGL599953	
ALBEF/2018	503.2 square metres of river (River Thames), foreshore and bed thereof	37 - London Borough of Lambeth	TGL599953	
ALBEF/2019	3.1 square metres of river (River Thames) and bed thereof	29 - London Borough of Lambeth	TGL599953	
ALBEF/2032	731.5 square metres of river (River Thames), foreshore and bed thereof	28 - London Borough of Lambeth	TGL599953	
BLABF/2001	0.4 square metres of river (River Thames) and bed thereof	29 - City of London	AGL440616	
BLABF/2005	19.1 square metres of river (River Thames) and bed thereof	28 - City of London	AGL440616	
BLABF/2007	590.1 square metres of river (River Thames), foreshore and bed thereof and stairs and airspace (Paul's Walk) (excluding the toe of the river wall)	30 - City of London	AGL440616	
BLABF/2008	455.2 square metres of river (River Thames) and bed thereof (excluding the toe of the river wall)	17 - City of London	AGL440616, AGL440617	
BLABF/2011	2265 square metres of river (River Thames) and bed thereof (excluding the toe of the river wall)	15 - City of London	AGL440616, AGL440617	
BLABF/2018	266.7 square metres of river (River Thames), foreshore and bed thereof below bridge carrying public road and footway (Blackfriars Bridge, A201) and stairs together with airspace (Paul's Walk) (excluding the toe of the river wall)	33 - City of London	AGL440616	Transport for London, City Bridge Foundation
BLABF/2020	408.1 square metres of pier (Blackfriars Millennium Pier) and river (River Thames) and bed thereof	22 - City of London	AGL440616, AGL440617	
BLABF/2021	11 square metres of pier (Blackfriars Millennium Pier) and river (River Thames) and bed thereof	26 - City of London	AGL440616	
BLABF/2022	219.4 square metres of pier, footbridge, pump house and stairs (Blackfriars Millennium Pier) and river (River Thames) and bed thereof (excluding the toe of the river wall)	24 - City of London	AGL440616, AGL440617	

BLABF/2023	43.1 square metres of pier (Blackfriars Millennium Pier) and river (River Thames) and bed thereof	27 - City of London	AGL440616	
BLABF/2024	6.4 square metres of stairs (Blackfriars Millennium Pier) and river (River Thames), foreshore and bed thereof (excluding the toe of the river wall)	25a - City of London	AGL440616	
BLABF/2036	0.6 square metres of pier, footbridge, pump house and stairs (Blackfriars Millennium Pier) and river (River Thames) and bed thereof (excluding the toe of the river wall)	24 - City of London	AGL440616	
BLABF/2038	39.5 square metres of river (River Thames) and bed thereof	4a - City of London	AGL440617	
BLABF/2041	0.9 square metres of river (River Thames), foreshore and bed thereof	30 - City of London	AGL440616	
CHAWF/2005	502.2 square metres of hardstanding (Chambers Wharf) and river (River Thames), foreshore and bed thereof	20a - London Borough of Southwark	Unregistered	
CHAWF/2006	37.6 square metres of hardstanding (Chambers Wharf) and river (River Thames), foreshore and bed thereof	25 - London Borough of Southwark	Unregistered	
CHAWF/2019	285.2 square metres of hardstanding (Chambers Wharf) and river (River Thames), foreshore and bed thereof	20a - London Borough of Southwark	Unregistered	
CHAWF/2020	0.6 square metres of hardstanding (Chambers Wharf) and river (River Thames), foreshore and bed thereof	20a - London Borough of Southwark	Unregistered	
CHAWF/2021	5 square metres of hardstanding (Chambers Wharf)	20 - London Borough of Southwark	SGL246760	
CHAWF/2022	16.8 square metres of hardstanding (Chambers Wharf)	20 - London Borough of Southwark	SGL246760	
CHAWF/2023	22.5 square metres of hardstanding (Chambers Wharf)	20 - London Borough of Southwark	SGL246760	
CHAWF/2024	7.7 square metres of hardstanding (Chambers Wharf)	20 - London Borough of Southwark	SGL246760	
HEAPS/2014	27.7 square metres of river (River Thames), foreshore and bed thereof	303 - London Borough of Wandsworth	Unregistered	
HEAPS/2016	560.6 square metres of river (River Thames), foreshore and bed thereof	305 - London Borough of Wandsworth	Unregistered	
HEAPS/2030	22.9 square metres of river (River Thames), foreshore and bed thereof	306 - London Borough of Wandsworth	Unregistered	
KEMPF/2009	209.5 square metres of river (River Thames) and bed thereof	27a - London Borough of Tower Hamlets	AGL594568	
KEMPF/2010	1432 square metres of river (River Thames), foreshore and bed thereof	26 - London Borough of Tower Hamlets	AGL594568	

KEMPF/2011	179.7 square metres of river (River Thames) and bed thereof	26a - London Borough of Tower Hamlets	AGL594568	
KEMPF/2027	298 square metres of river (River Thames), foreshore banks and bed thereof	29 - London Borough of Tower Hamlets	AGL594568	
KEMPF/2029	3.9 square metres of river (River Thames) and bed thereof	28 - London Borough of Tower Hamlets	AGL594568	
MNTLC/2140	296.7 square metres of river (River Thames), foreshore and bed thereof, below bridge carrying public road and footways (Vauxhall Bridge, A202)	23 - London Borough of Lambeth	TGL599953	Transport for London
MNTLC/2142	22.6 square metres of river (River Thames), foreshore and bed thereof	20 - London Borough of Lambeth	TGL599953	
MNTLC/2143	154.8 square metres of river (River Thames), foreshore and bed thereof, below bridge carrying public road and footways (Vauxhall Bridge, A202)	22 - London Borough of Lambeth	TGL599953	Transport for London
MNTLD/2193	15.8 square metres of river (River Thames), foreshore and bed thereof	29 - London Borough of Southwark	TGL498256	
MNTLD/2265	0.1 square metres of hardstanding (Chambers Wharf) and river (River Thames), foreshore and bed thereof	20a - London Borough of Southwark	TGL498256	
MNTLD/2266	0.1 square metres of hardstanding (Chambers Wharf)	20 - London Borough of Southwark	SGL246760	
PUTEF/2001	329.2 square metres of river (River Thames), foreshore and bed thereof	17 - London Borough of Wandsworth	TGL499814	
PUTEF/2003	18.4 square metres of river (River Thames), foreshore and bed thereof	18 - London Borough of Wandsworth	TGL499814	
PUTEF/2007	216.6 square metres of river (River Thames), foreshore and bed thereof	24 - London Borough of Wandsworth	TGL499814	

EXECUTION PAGE

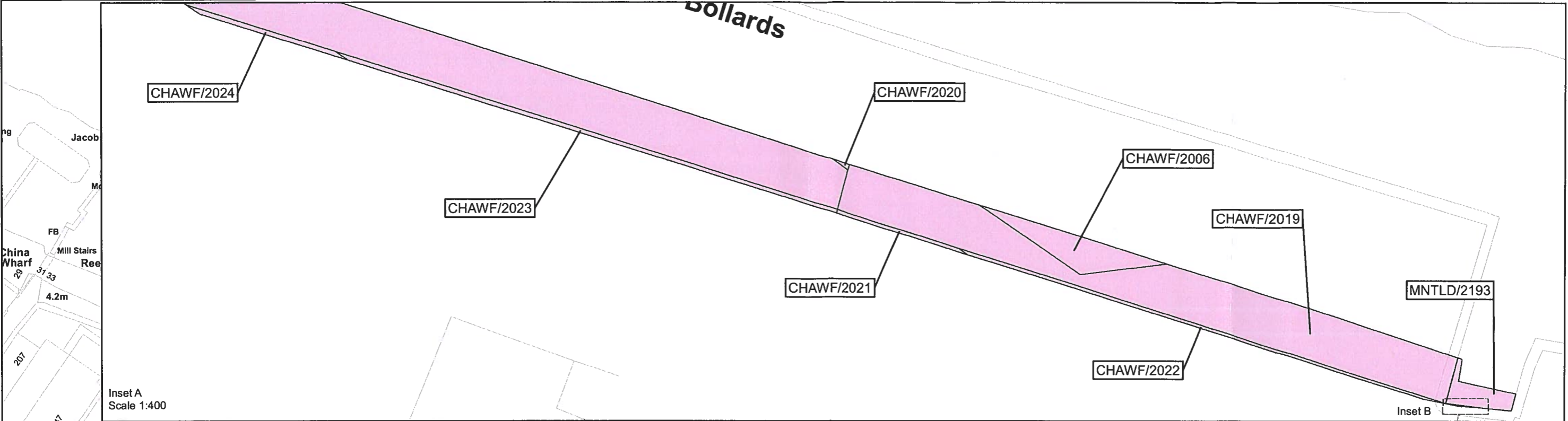
The Common seal of **Thames Water**)
Utilities Limited was affixed in the)
presence of:)



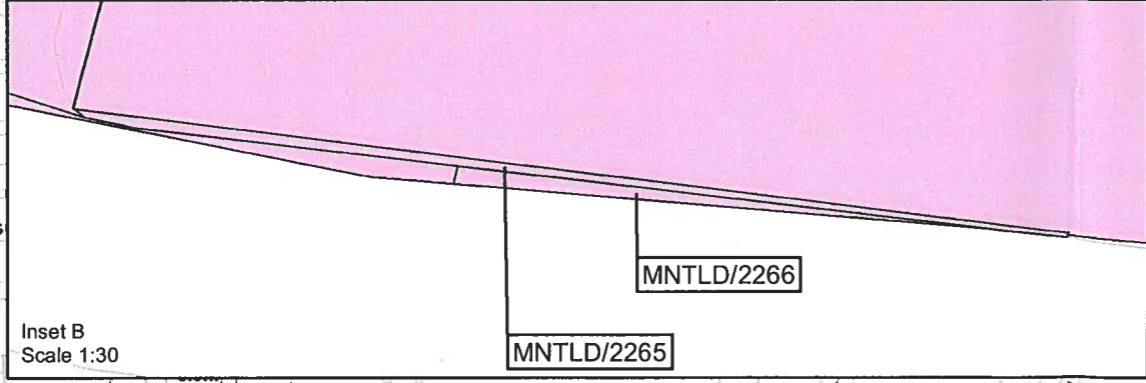
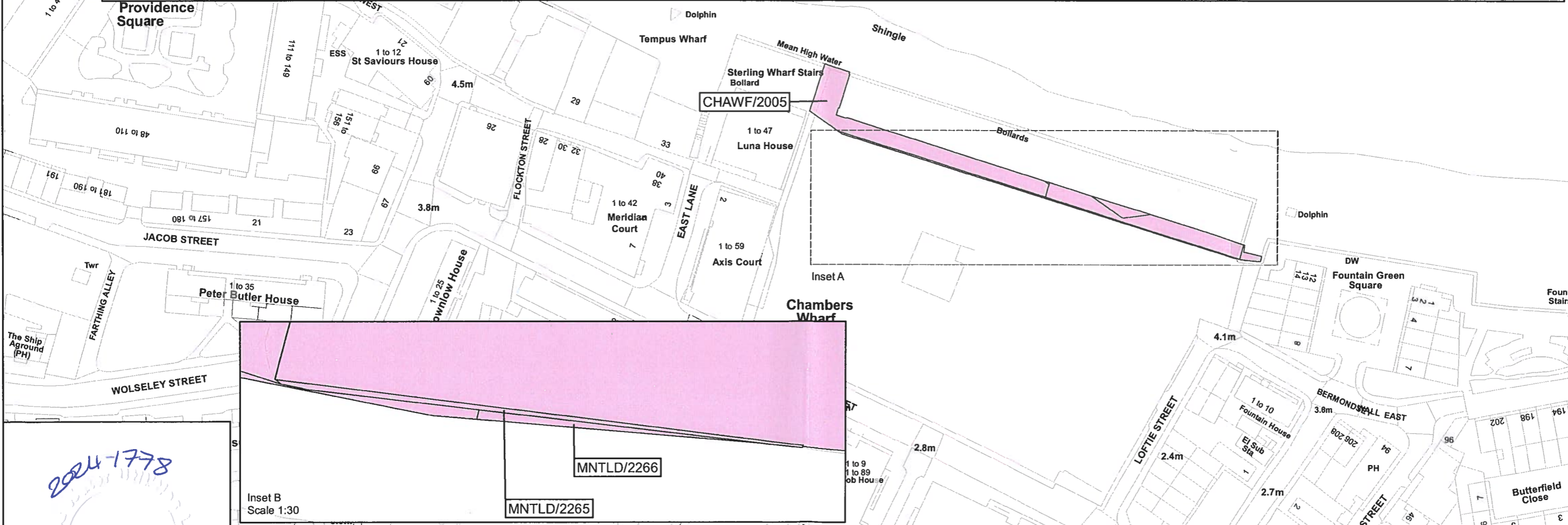
Jacqueline Sandison
Senior Legal Counsel

.....
Authorised Signatory

.....
Date

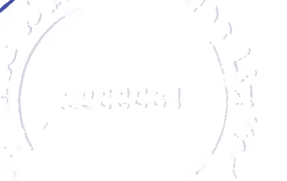


Inset A
Scale 1:400



Inset B
Scale 1:30

2024-1778



The Common seal of Thames Water Utilities Limited was affixed in the presence of:

[Signature]
Authorised Signatory

Dated: 17 July 2024

Key
 Permanent Acquisition of Land
 Jacqueline Sandison
 Senior Legal Counsel

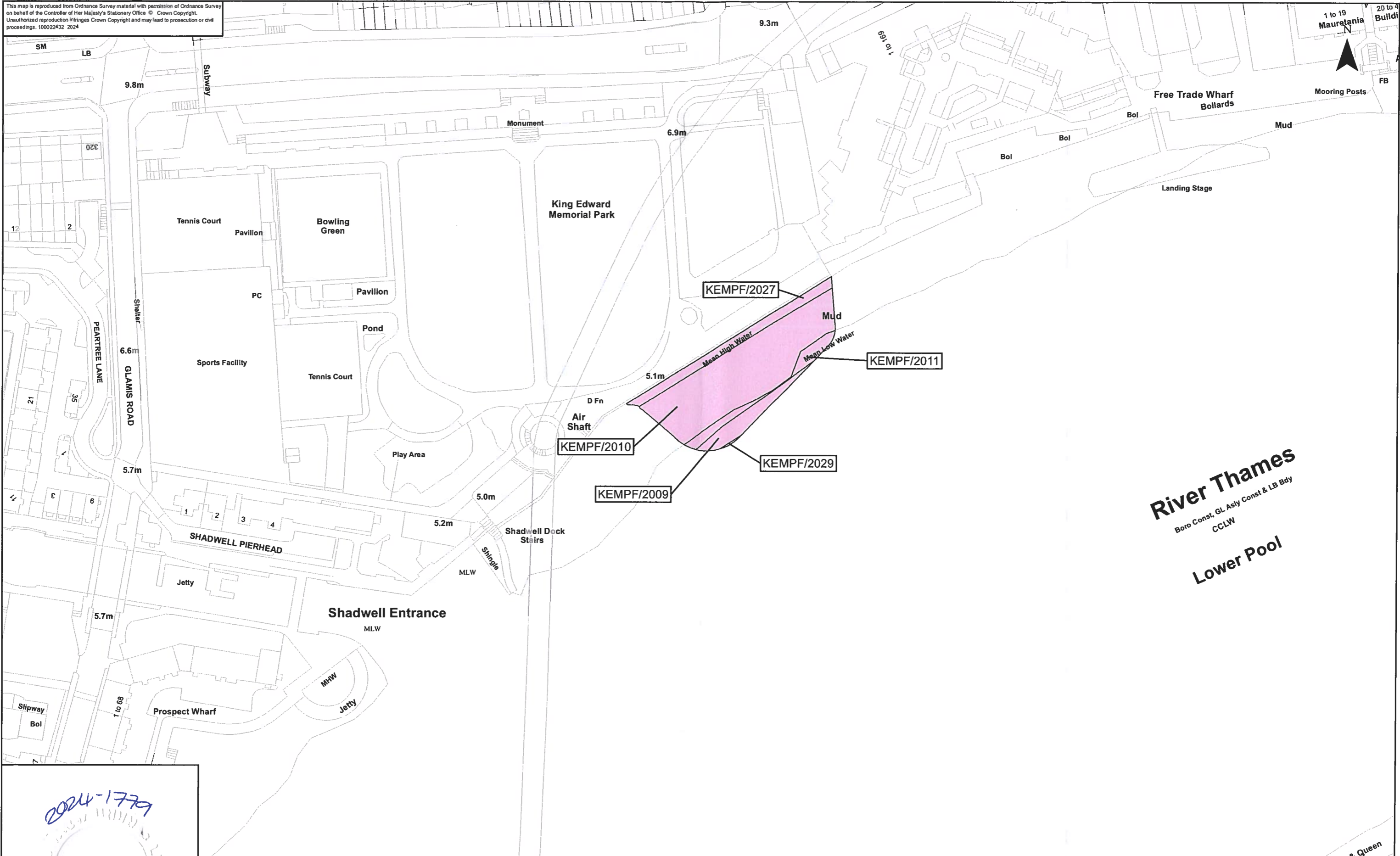


Job Title
 The Thames Water Utilities Limited (Thames Tideway Tunnel) Order 2014 (AS AMENDED) SI 2014 NO.2384
 Drawing Title
 Plan referred to in General Vesting Declaration No. 41 of The Thames Water Utilities Limited (Thames Tideway Tunnel) Order 2014 (AS AMENDED) SI 2014 NO.2384
 Date:
 For identification only
 Document Reference
 70054885-NTC-GVD-TR 1&2-GVD41-0005

Rev #	Revision Date	Revision Details	Drawn	Check	Review	App'd
A	05/07/2024		AB	JH	LC	VB

Date: 05/07/2024
 Scale at A3
 1:1,250

This map is reproduced from Ordnance Survey material with permission of Ordnance Survey on behalf of the Controller of Her Majesty's Stationery Office © Crown Copyright. Unauthorised reproduction infringes Crown Copyright and may lead to prosecution or civil proceedings. 100022432 2024



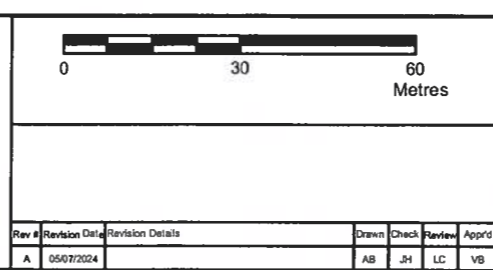
River Thames
Boro Const, GL Asly Const & LB Bdy
CCLW
Lower Pool

2024-1779
230351

The Common seal of Thames Water Utilities Limited was affixed in the presence of:

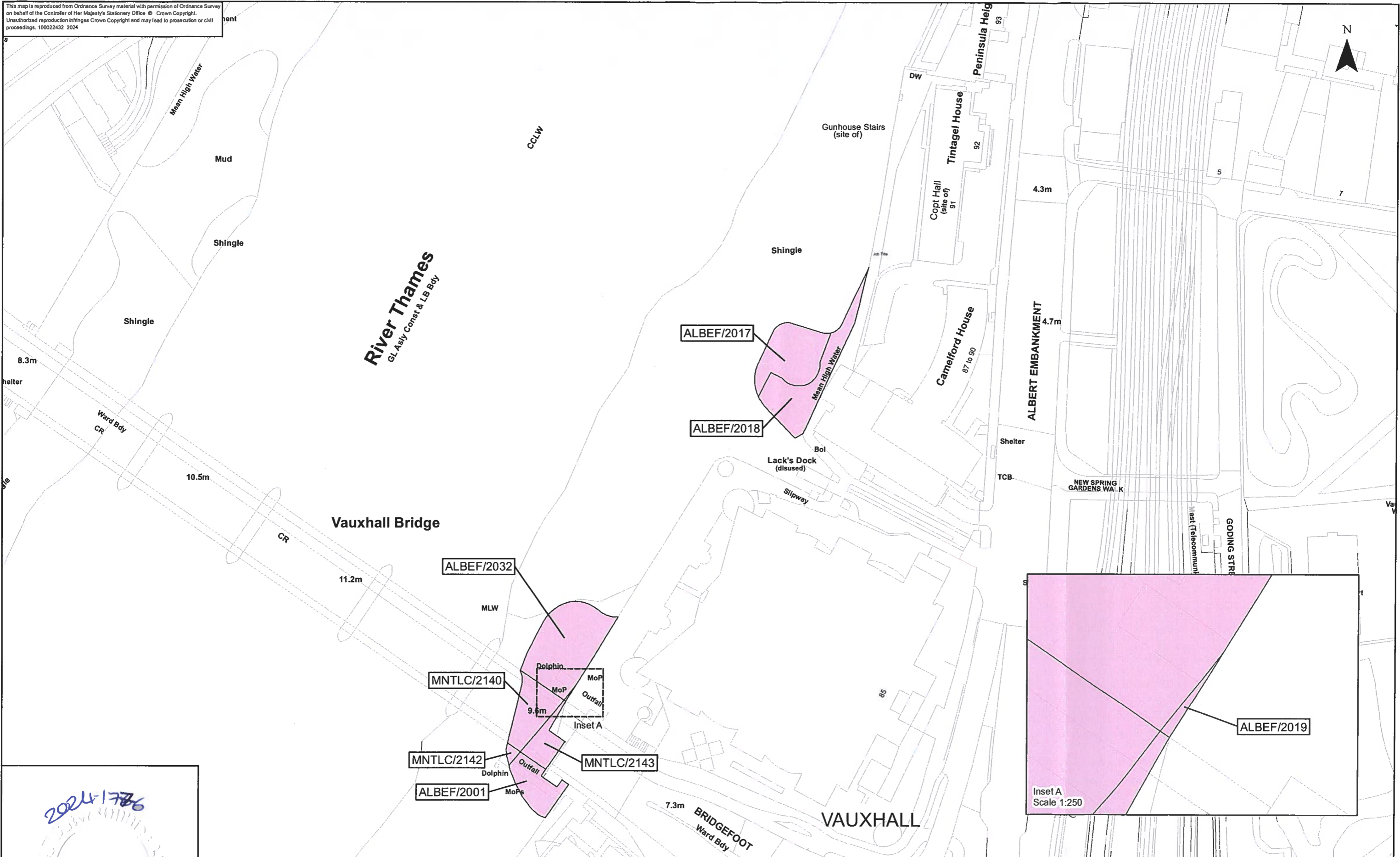
Authorised Signatory
Dated: 17 July 2024


Key
 Permanent Acquisition of Land
 Jacqueline Sandison
 Senior Legal Counsel





Job Title: The Thames Water Utilities Limited (Thames Tideway Tunnel) Order 2014 (AS AMENDED) SI 2014 NO.2384
 Drawing Title: Plan referred to in General Vesting Declaration No. 41 of The Thames Water Utilities Limited (Thames Tideway Tunnel) Order 2014 (AS AMENDED) SI 2014 NO.2384
 Status: For identification only
 Document Reference: 70054885-NTC-GVD-TR1&2-GVD41-0006

This map is reproduced from Ordnance Survey material with permission of Ordnance Survey on behalf of the Controller of Her Majesty's Stationery Office © Crown Copyright. Unauthorized reproduction infringes Crown Copyright and may lead to prosecution or civil proceedings. 100022432 2024



2024/1776

 2024/1776

The Common seal of Thames Water Utilities Limited was affixed in the presence of

 Authorised Signatory
 Dated: 17 July 2024

Key
 Permanent Acquisition of Land
 Jacqueline Sandison
 Senior Legal Counsel

0 30 60 Metres	
Rev #	Revision Date
A	05/07/2024
Drawn	Check
AB	JH
Review	App'd
LC	VB



Thames Water
Tideway
 Date: 05/07/2024
 Scale at A3: 1:1,250

The Thames Water Utilities Limited (Thames Tideway Tunnel) Order 2014 (AS AMENDED) SI 2014 NO.2384
 Drawing Title
 Plan referred to in General Vesting Declaration No. 41 of The Thames Water Utilities Limited (Thames Tideway Tunnel) Order 2014 (AS AMENDED) SI 2014 NO.2384
 Status: For identification only
 Document Reference
 70054885-NTC-GVD-TR1-GVD41-0003

BLABF/2001

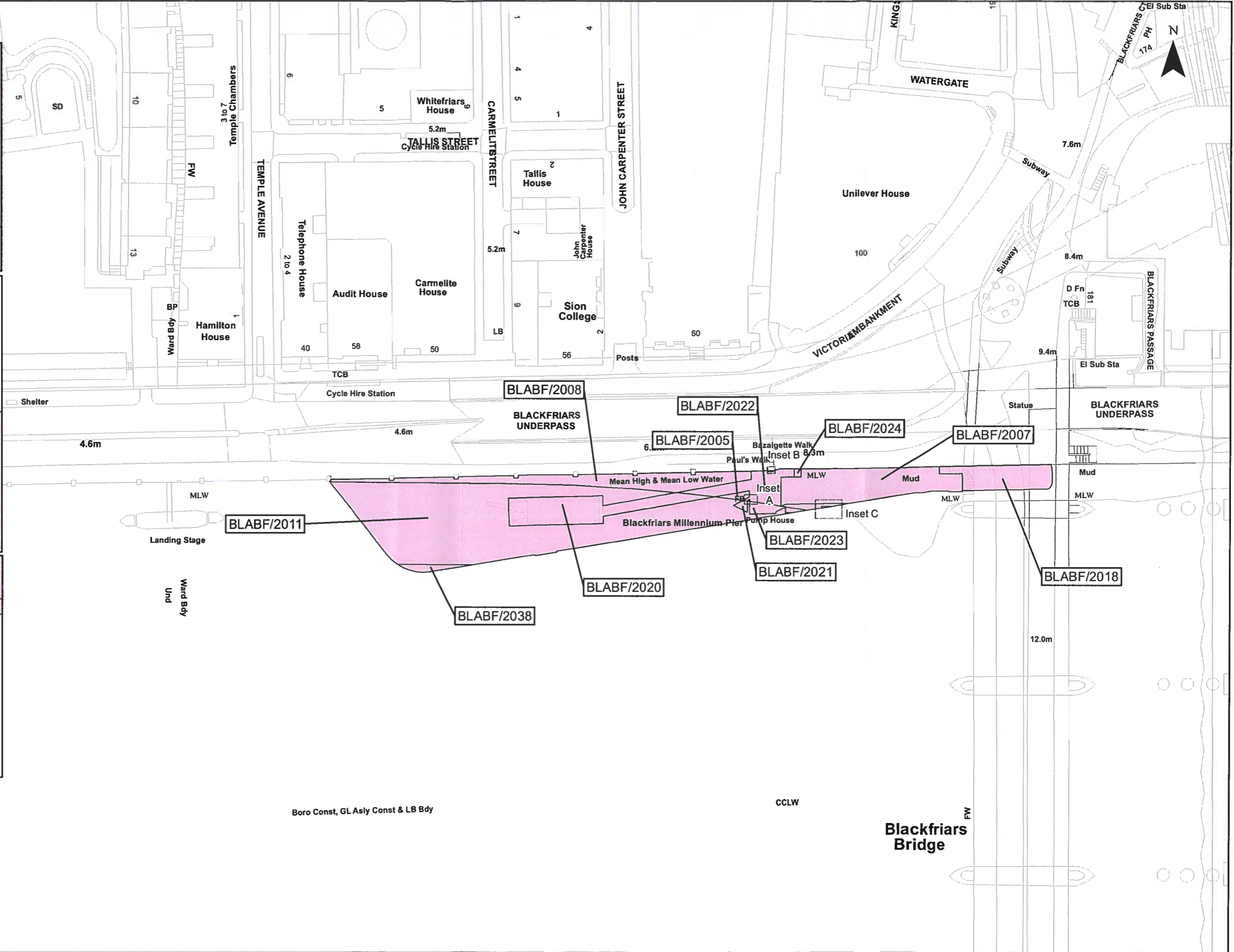
Inset A
Scale 1:50

BLABF/2036

Inset B
Scale 1:50

BLABF/2041

Inset C
Scale 1:100



River Thames
s Reach

Boro Const, GL Asly Const & LB Bdy

CCLW

Blackfriars Bridge

City of London

2024-1777

The Common seal of Thames Water Utilities Limited was affixed in the presence of

[Signature]
Authorised Signatory

Dated: 17 July 2024

Key

Permanent Acquisition of Land

Jacqueline Sandison
Senior Legal Counsel

0		30		60	
Metres					
Rev #	Revision Date	Revision Details		Drawn	Check
A	05/07/2024			AB	JH
				LC	VB



Tideway

Date: 05/07/2024

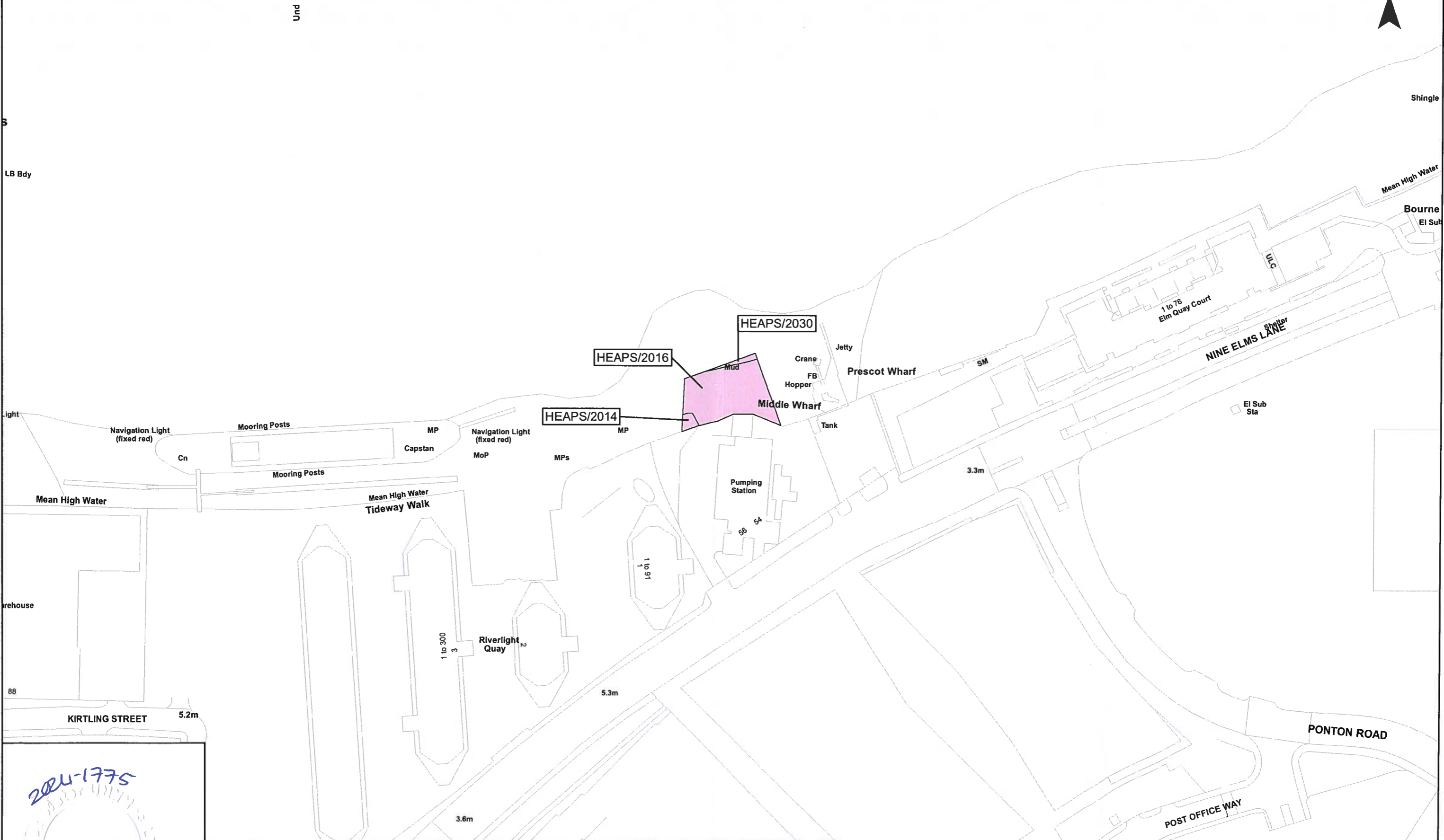
Scale at A3
1:1,250

The Thames Water Utilities Limited (Thames Tideway Tunnel) Order 2014 (AS AMENDED) SI 2014 NO.2384

Plan referred to in General Vesting Declaration No. 41 of The Thames Water Utilities Limited (Thames Tideway Tunnel) Order 2014 (AS AMENDED) SI 2014 NO.2384

For identification only

Document Reference
70054885-NTC-GVD-TR1-GVD41-0004



2024-1775

Authorised Signatory

Dated: 17 July 2024

The Common seal of Thames Water Utilities Limited was affixed in the presence of:

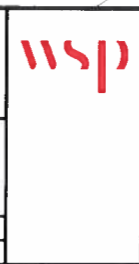
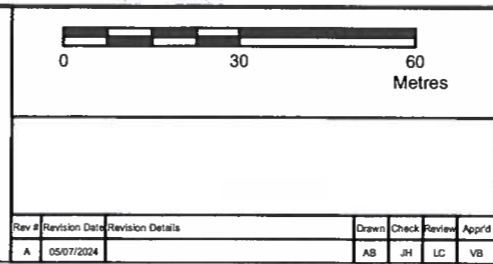
Authorised Signatory

Dated: 17 July 2024

Key

Permanent Acquisition of Land

Jacqueline Sandison
Senior Legal Counsel



Date: 05/07/2024

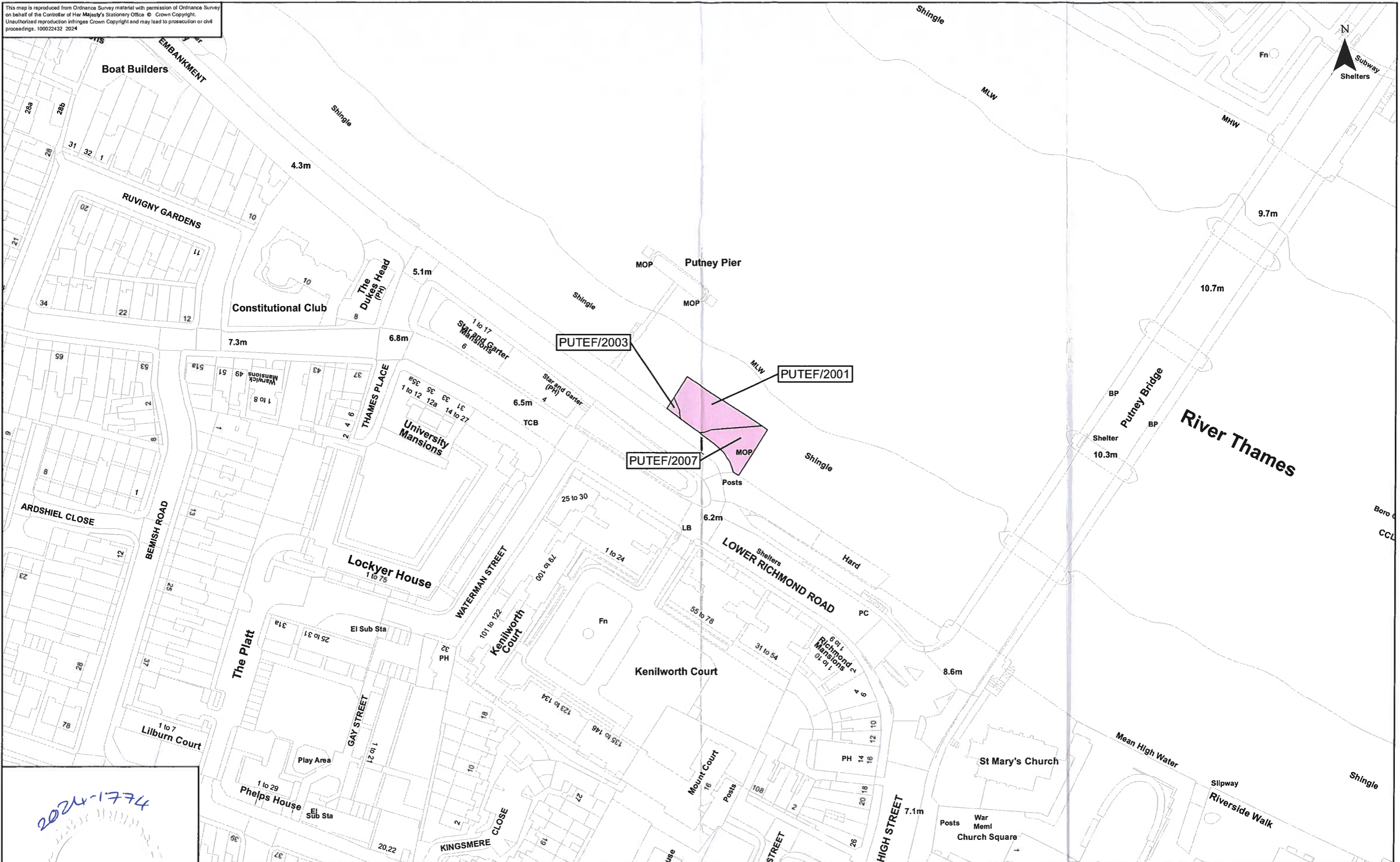
Scale at A3
1:1,250

Job Title
The Thames Water Utilities Limited (Thames Tideway Tunnel) Order 2014 (AS AMENDED) SI 2014 NO.2384

Drawing Title
Plan referred to in General Vesting Declaration No. 41 of The Thames Water Utilities Limited (Thames Tideway Tunnel) Order 2014 (AS AMENDED) SI 2014 NO.2384

Status
For identification only

Document Reference
70054885-NTC-GVD-TR1&2-GVD41-0002



2024-1774

Authorised Signatory: *[Signature]*

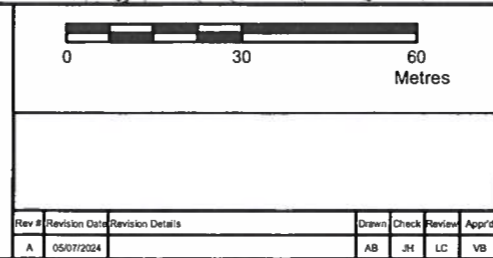
Dated: 17 July 2024

The Common seal of Thames Water Utilities Limited was affixed in the presence of:

Key

Permanent Acquisition of Land

Jacqueline Sandison
Senior Legal Counsel



Job Title: The Thames Water Utilities Limited (Thames Tideway Tunnel) Order 2014 (AS AMENDED) SI 2014 NO.2384

Drawing Title: Plan referred to in General Vesting Declaration No. 41 of The Thames Water Utilities Limited (Thames Tideway Tunnel) Order 2014 (AS AMENDED) SI 2014 NO.2384

Site: For identification only

Document Reference: 70054885-NTC-GVD-TR1&2-GVD41-0001