

**THE THAMES WATER UTILITIES LIMITED (THAMES TIDEWAY TUNNEL) ORDER 2014 (AS AMENDED)<sup>1</sup> SI 2014 NO.2384**

**GENERAL VESTING DECLARATION No. 42**

This GENERAL VESTING DECLARATION NO. 42 is made the 17 day of July 2024 by Thames Water Utilities Limited ("Thames Water").

WHEREAS:

- 1 On 3 September 2014 an order entitled The Thames Water Utilities Limited (Thames Tideway Tunnel) Order 2014 (as amended) SI 2014 No.2384 ("the Order") was made (and came into force on 24 September 2014) by the Secretaries of State for Communities and Local Government and Environment, Food and Rural Affairs under the powers conferred on them by the Planning Act 2008 authorising Thames Water to acquire the land specified in the Schedule hereto.
- 2 Notice of the making/confirmation of the Order was first published in accordance with section 134 of the Planning Act 2008 on 19 September 2014.
- 3 Preliminary notice of the intention to make a general vesting declaration in respect of any of the land described in the Schedule hereto was first published on **19 July 2023** and **24 November 2023** in accordance with section 3 of the Compulsory Purchase (Vesting Declarations) Act 1981 ("the 1981 Act")<sup>2</sup>, as modified by Article 34 of the Order.
- 4 That preliminary notice included the particulars specified in section 3(3) of the 1981 Act, as modified by Article 34 of the Order.
- 5 The notice referred to in (4) above specified the period of two months beginning with the date of its first publication as the period before the end of which this general vesting declaration could not be executed.

NOW THIS DEED WITNESSETH that, in exercise of the powers conferred on them by the Order and section 4 of the 1981 Act, Thames Water hereby declare:

The land described in the Schedule hereto being part of the land authorised to be acquired by the Order and more particularly delineated on the plans annexed hereto, together with the right to enter upon and take possession of the land shall vest in the Thames Water as from the end of the period of 28 days from the date on which the service of notices required by section 6 of the 1981 Act and in accordance with Article 34 of the Order is completed.

---

<sup>1</sup> The Order has been amended by (1) SI 2015/723 issued on 17 March 2015; (2) SI 2017/659 issued on 16 May 2017; (3) SI 2018/1262 issued 29 November 2018; (4) Notices of Variation Nos.1 and 2 Issued on 17 March 2015 and 17 August 2017 respectively in respect of the Deemed Marine Licence; (5) SI 2020/268 issued on 10 March 2020; and (6) SI 2020/862 issued on 13 August 2020.

<sup>2</sup> The Version of the 1981 Act is the version that applied immediately prior to amendments brought in by the Housing and Planning Bill on 13 October 2015 and as modified by the Order.

## SCHEDULE

### The land

<u>Reference number on attached notice plan</u>	<u>Description of the land</u>	<u>Associated Book of Reference plot number</u>	<u>Title Number</u>
FALCT/2009	0.1 square metres of a stratum of subsoil below public footway (York Road, A3205) where the upper surface of the stratum of the sub-soil is at a level equivalent to -25.2m (minus Twenty Five Point Two metres) OD (Ordnance Datum) or thereabout at its western boundary and -25.2m (minus Twenty Five Point Two metres) OD (Ordnance Datum) or thereabouts at its eastern boundary, and the lower surface of the stratum of the sub-soil is at a level equivalent to -41.9m (minus Forty One Point Nine metres) OD (Ordnance Datum) or thereabout at its western boundary and -41.9m (minus Forty One Point Nine metres) OD (Ordnance Datum) or thereabouts at its eastern boundary.	198 - London Borough of Wandsworth	TGL367698
FALCT/2010	7.6 square metres of a stratum of subsoil below public footway (York Road, A3205) where the upper surface of the stratum of the sub-soil is at a level equivalent to -25.2m (minus Twenty Five Point Two metres) OD (Ordnance Datum) or thereabout at its western boundary and -25.1m (minus Twenty Five Point One metres) OD (Ordnance Datum) or thereabouts at its eastern boundary, and the lower surface of the stratum of the sub-soil is at a level equivalent to -41.9m (minus Forty One Point Nine metres) OD (Ordnance Datum) or thereabout at its western boundary and -41.8m (minus Forty One Point Eight metres) OD (Ordnance Datum) or thereabouts at its eastern boundary.	197 - London Borough of Wandsworth	TGL367698
FALCT/2011	98.9 square metres of a stratum of subsoil below public road, central reservation and footway (York Road, A3205) and shrubbery where the upper surface of the stratum of the sub-soil is at a level equivalent to -26.1m (minus Twenty Six Point One metres) OD (Ordnance Datum) or thereabout at its western boundary and -25.1m (minus Twenty Five Point One metres) OD (Ordnance Datum) or thereabouts at its eastern boundary, and the lower surface of the stratum of the sub-soil is at a level equivalent to -41.9m (minus Forty One Point Nine metres) OD (Ordnance Datum) or thereabout at its western boundary and -41.8m (minus Forty One Point Eight metres) OD (Ordnance Datum) or thereabouts at its eastern boundary.	191 - London Borough of Wandsworth	Unregistered
FALCT/2013	44.9 square metres of a stratum of subsoil below public road and footway (York Road, A3205) where the upper surface of the stratum of the sub-soil is at a level equivalent to -25.3m (minus Twenty Five Point Three metres) OD (Ordnance Datum) or thereabout at its western boundary and -25.1m (minus Twenty Five Point One metres) OD (Ordnance Datum) or thereabouts at its eastern boundary, and the lower surface of the stratum of the sub-soil is at a level equivalent to -42m (minus Forty Two metres) OD (Ordnance Datum) or thereabout at its western boundary and -41.8m (minus Forty One Point Eight metres) OD (Ordnance Datum) or thereabouts at its eastern boundary.	196 - London Borough of Wandsworth	Unregistered
FALCT/2019	0.1 square metres of a stratum of subsoil below public footway (York Road, A3205) where the upper surface of the stratum of the sub-soil is at a level equivalent to -25.2m (minus Twenty Five Point Two metres) OD (Ordnance Datum) or thereabout at its western boundary and -25.2m (minus Twenty Five Point Two metres) OD (Ordnance Datum) or thereabouts at its eastern boundary, and the lower surface of the stratum of the sub-soil is at a level equivalent to -41.9m (minus Forty One Point Nine metres) OD (Ordnance Datum) or thereabout at its western boundary and -41.9m (minus Forty One Point Nine metres) OD (Ordnance Datum) or thereabouts	207 - London Borough of Wandsworth	SGL304827

	at its eastern boundary.		
FRGCT/2055	119.2 square metres of a stratum of subsoil below public road and footways (Wandsworth High Street) where the upper surface of the stratum of the sub-soil is at a level equivalent to -6.9m (minus Six Point Nine metres) OD (Ordnance Datum) or thereabout at its southern boundary and -7m (minus Seven metres) OD (Ordnance Datum) or thereabouts at its northern boundary, and the lower surface of the stratum of the sub-soil is at a level equivalent to -21.5m (minus Twenty One Point Five metres) OD (Ordnance Datum) or thereabout at its southern boundary and -21.6m (minus Twenty One Point Six metres) OD (Ordnance Datum) or thereabouts at its northern boundary.	148 - London Borough of Wandsworth	Unregistered
FRGCT/2056	12 square metres of a stratum of subsoil below public footway (Wandsworth High Street) where the upper surface of the stratum of the sub-soil is at a level equivalent to -7m (minus Seven metres) OD (Ordnance Datum) or thereabout at its southern boundary and -7m (minus Seven metres) OD (Ordnance Datum) or thereabouts at its northern boundary, and the lower surface of the stratum of the sub-soil is at a level equivalent to -21.6m (minus Twenty One Point Six metres) OD (Ordnance Datum) or thereabout at its southern boundary and -21.6m (minus Twenty One Point Six metres) OD (Ordnance Datum) or thereabouts at its northern boundary.	149 - London Borough of Wandsworth	390383
FRGCT/2057	14.4 square metres of a stratum of subsoil below public footway (Wandsworth High Street) where the upper surface of the stratum of the sub-soil is at a level equivalent to -7m (minus Seven metres) OD (Ordnance Datum) or thereabout at its southern boundary and -7m (minus Seven metres) OD (Ordnance Datum) or thereabouts at its northern boundary, and the lower surface of the stratum of the sub-soil is at a level equivalent to -21.6m (minus Twenty One Point Six metres) OD (Ordnance Datum) or thereabout at its southern boundary and -21.6m (minus Twenty One Point Six metres) OD (Ordnance Datum) or thereabouts at its northern boundary.	150 - London Borough of Wandsworth	LN6898
FRGCT/2058	15.2 square metres of a stratum of subsoil below public footway (Wandsworth High Street) where the upper surface of the stratum of the sub-soil is at a level equivalent to -6.9m (minus Six Point Nine metres) OD (Ordnance Datum) or thereabout at its southern boundary and -7m (minus Seven metres) OD (Ordnance Datum) or thereabouts at its northern boundary, and the lower surface of the stratum of the sub-soil is at a level equivalent to -21.5m (minus Twenty One Point Five metres) OD (Ordnance Datum) or thereabout at its southern boundary and -21.6m (minus Twenty One Point Six metres) OD (Ordnance Datum) or thereabouts at its northern boundary.	151 - London Borough of Wandsworth	330315
FRGCT/2087	1 square metres of a stratum of subsoil below public footway (Wandsworth Plain) where the upper surface of the stratum of the sub-soil is at a level equivalent to -7m (minus Seven metres) OD (Ordnance Datum) or thereabout at its southern boundary and -7.3m (minus Seven Point Three metres) OD (Ordnance Datum) or thereabouts at its northern boundary, and the lower surface of the stratum of the sub-soil is at a level equivalent to -21.6m (minus Twenty One Point Six metres) OD (Ordnance Datum) or thereabout at its southern boundary and -21.9m (minus Twenty One Point Nine metres) OD (Ordnance Datum) or thereabouts at its northern boundary.	124 - London Borough of Wandsworth	156693
FRGCT/2088	11.4 square metres of a stratum of subsoil below public road and footways (Wandsworth High Street) where the upper surface of the stratum of the sub-soil is at a level equivalent to -6.9m (minus Six Point Nine metres) OD (Ordnance Datum) or thereabout at its southern boundary and -7m (minus Seven metres) OD (Ordnance Datum) or thereabouts at its northern boundary, and the lower surface of the stratum of the sub-soil is at a level equivalent to -21.5m (minus Twenty One Point Five metres) OD (Ordnance Datum) or thereabout at its southern boundary and -21.6m (minus	148 - London Borough of Wandsworth	194832

	Twenty One Point Six metres) OD (Ordnance Datum) or thereabouts at its northern boundary.		
FRGCT/2104	101.7 square metres of a stratum of subsoil below public roads and footways (Wandsworth Plain and Church Row) where the upper surface of the stratum of the sub-soil is at a level equivalent to -7m (minus Seven metres) OD (Ordnance Datum) or thereabout at its southern boundary and -7.2m (minus Seven Point Two metres) OD (Ordnance Datum) or thereabouts at its northern boundary, and the lower surface of the stratum of the sub-soil is at a level equivalent to -21.6m (minus Twenty One Point Six metres) OD (Ordnance Datum) or thereabout at its southern boundary and -21.8m (minus Twenty One Point Eight metres) OD (Ordnance Datum) or thereabouts at its northern boundary.	124 - London Borough of Wandsworth	Unregistered
FRGCT/2105	53.1 square metres of a stratum of subsoil below public road, footways and grassy knoll (Armoury Way) where the upper surface of the stratum of the sub-soil is at a level equivalent to -7.2m (minus Seven Point Two metres) OD (Ordnance Datum) or thereabout at its southern boundary and -7.3m (minus Seven Point Three metres) OD (Ordnance Datum) or thereabouts at its northern boundary, and the lower surface of the stratum of the sub-soil is at a level equivalent to -21.8m (minus Twenty One Point Eight metres) OD (Ordnance Datum) or thereabout at its southern boundary and -21.9m (minus Twenty One Point Nine metres) OD (Ordnance Datum) or thereabouts at its northern boundary.	122 - London Borough of Wandsworth	Unregistered
FRGCT/2106	0.1 square metres of a stratum of subsoil below public road, footways and grassy knoll (Armoury Way) where the upper surface of the stratum of the sub-soil is at a level equivalent to -7.2m (minus Seven Point Two metres) OD (Ordnance Datum) or thereabout at its southern boundary and -7.2m (minus Seven Point Two metres) OD (Ordnance Datum) or thereabouts at its northern boundary, and the lower surface of the stratum of the sub-soil is at a level equivalent to -21.8m (minus Twenty One Point Eight metres) OD (Ordnance Datum) or thereabout at its southern boundary and -21.8m (minus Twenty One Point Eight metres) OD (Ordnance Datum) or thereabouts at its northern boundary.	122 - London Borough of Wandsworth	LN23123
FRGCT/2107	0.1 square metres of a stratum of subsoil below public roads and footways (Wandsworth Plain and Church Row) where the upper surface of the stratum of the sub-soil is at a level equivalent to -7.2m (minus Seven Point Two metres) OD (Ordnance Datum) or thereabout at its southern boundary and -7.2m (minus Seven Point Two metres) OD (Ordnance Datum) or thereabouts at its northern boundary, and the lower surface of the stratum of the sub-soil is at a level equivalent to -21.8m (minus Twenty One Point Eight metres) OD (Ordnance Datum) or thereabout at its southern boundary and -21.8m (minus Twenty One Point Eight metres) OD (Ordnance Datum) or thereabouts at its northern boundary.	124 - London Borough of Wandsworth	112566
GRECT/2154	31.8 square metres of a stratum of subsoil below car park (177, 179 and 181, Lower Road) where the upper surface of the stratum of the sub-soil is at a level equivalent to -35.8m (minus thirty five point eight metres) OD (Ordnance Datum) or thereabout at its western boundary and -35.8m (minus thirty five point eight metres) OD (Ordnance Datum) or thereabouts at its eastern boundary, and the lower surface of the stratum of the sub-soil is at a level equivalent to -53.6m (minus fifty three point six metres) OD (Ordnance Datum) or thereabout at its western boundary and -53.6m (minus fifty three point six metres) OD (Ordnance Datum) or thereabouts at its eastern boundary.	234 - London Borough of Southwark	TGL591898
GRECT/2155	469.9 square metres of a stratum of subsoil below railway and access (Canada Water and Surrey Quays) where the upper surface of the stratum of the sub-soil is at a level equivalent to -35.8m (minus thirty five point eight metres) OD (Ordnance Datum) or thereabout at its western boundary and -35.7m (minus thirty five point seven metres) OD (Ordnance Datum) or thereabouts at its	235 - London Borough of Southwark	TGL354706

	eastern boundary, and the lower surface of the stratum of the sub-soil is at a level equivalent to -53.6m (minus fifty three point six metres) OD (Ordnance Datum) or thereabout at its western boundary and -53.5m (minus fifty three point five metres) OD (Ordnance Datum) or thereabouts at its eastern boundary.		
MNTLA/2113	27.8 square metres of a stratum of subsoil below viaduct carrying railway and works (District line) where the upper surface of the stratum of the sub-soil is at a level equivalent to -14m (minus Fourteen metres) OD (Ordnance Datum) or thereabout at its western boundary and -14m (minus Fourteen metres) OD (Ordnance Datum) or thereabouts at its eastern boundary, and the lower surface of the stratum of the sub-soil is at a level equivalent to -32.5m (minus Thirty Two Point Five metres) OD (Ordnance Datum) or thereabout at its western boundary and -32.5m (minus Thirty Two Point Five metres) OD (Ordnance Datum) or thereabouts at its eastern boundary.	72 - London Borough of Hounslow	AGL365095
MNTLA/2188	0.8 square metres of a stratum of subsoil below public road and footway (British Grove) where the upper surface of the stratum of the sub-soil is at a level equivalent to -14.8m (minus Fourteen Point Eight metres) OD (Ordnance Datum) or thereabout at its western boundary and -14.8m (minus Fourteen Point Eight metres) OD (Ordnance Datum) or thereabouts at its eastern boundary, and the lower surface of the stratum of the sub-soil is at a level equivalent to -33.3m (minus Thirty Three Point Three metres) OD (Ordnance Datum) or thereabout at its western boundary and -33.3m (minus Thirty Three Point Three metres) OD (Ordnance Datum) or thereabouts at its eastern boundary.	178 - London Borough of Hounslow	MX398141
MNTLA/2189	0.1 square metres of a stratum of subsoil below public road and footway (Great West Road) where the upper surface of the stratum of the sub-soil is at a level equivalent to -14.8m (minus Fourteen Point Eight metres) OD (Ordnance Datum) or thereabout at its western boundary and -14.8m (minus Fourteen Point Eight metres) OD (Ordnance Datum) or thereabouts at its eastern boundary, and the lower surface of the stratum of the sub-soil is at a level equivalent to -33.3m (minus Thirty Three Point Three metres) OD (Ordnance Datum) or thereabout at its western boundary and -33.3m (minus Thirty Three Point Three metres) OD (Ordnance Datum) or thereabouts at its eastern boundary.	179 - London Borough of Hounslow	MX406097
MNTLA/2198	129.6 square metres of a stratum of subsoil below public road, central reservation and footways (Great West Road, A4) where the upper surface of the stratum of the sub-soil is at a level equivalent to -14.8m (minus Fourteen Point Eight metres) OD (Ordnance Datum) or thereabout at its western boundary and -14.9m (minus Fourteen Point Nine metres) OD (Ordnance Datum) or thereabouts at its eastern boundary, and the lower surface of the stratum of the sub-soil is at a level equivalent to -33.3m (minus Thirty Three Point Three metres) OD (Ordnance Datum) or thereabout at its western boundary and -33.4m (minus Thirty Three Point Four metres) OD (Ordnance Datum) or thereabouts at its eastern boundary.	180 - London Borough of Hounslow	Unregistered
MNTLA/2199	17.2 square metres of a stratum of subsoil below public road and footways (Great West Road, A4) where the upper surface of the stratum of the sub-soil is at a level equivalent to -14.8m (minus Fourteen Point Eight metres) OD (Ordnance Datum) or thereabout at its western boundary and -14.9m (minus Fourteen Point Nine metres) OD (Ordnance Datum) or thereabouts at its eastern boundary, and the lower surface of the stratum of the sub-soil is at a level equivalent to -33.3m (minus Thirty Three Point Three metres) OD (Ordnance Datum) or thereabout at its western boundary and -33.4m (minus Thirty Three Point Four metres) OD (Ordnance Datum) or thereabouts at its eastern boundary.	54 - London Borough of Hammersmith & Fulham	459326
MNTLA/2200	101.3 square metres of a stratum of subsoil below public road and footways (Great West Road, A4) where the upper surface of the stratum of the sub-soil is at a level equivalent to -14.8m (minus	55 - London Borough of Hammersmith	Unregistered

	Fourteen Point Eight metres) OD (Ordnance Datum) or thereabout at its western boundary and -14.9m (minus Fourteen Point Nine metres) OD (Ordnance Datum) or thereabouts at its eastern boundary, and the lower surface of the stratum of the sub-soil is at a level equivalent to -33.3m (minus Thirty Three Point Three metres) OD (Ordnance Datum) or thereabout at its western boundary and -33.4m (minus Thirty Three Point Four metres) OD (Ordnance Datum) or thereabouts at its eastern boundary.	& Fulham	
MNTLA/2201	96.1 square metres of a stratum of subsoil below public road and footway (Great West Road, A4) where the upper surface of the stratum of the sub-soil is at a level equivalent to -14.9m (minus Fourteen Point Nine metres) OD (Ordnance Datum) or thereabout at its western boundary and -14.9m (minus Fourteen Point Nine metres) OD (Ordnance Datum) or thereabouts at its eastern boundary, and the lower surface of the stratum of the sub-soil is at a level equivalent to -33.4m (minus Thirty Three Point Four metres) OD (Ordnance Datum) or thereabout at its western boundary and -33.4m (minus Thirty Three Point Four metres) OD (Ordnance Datum) or thereabouts at its eastern boundary.	56 - London Borough of Hammersmith & Fulham	BGL79216
MNTLA/2214	0.6 square metres of a stratum of subsoil below public footway (British Grove Passage) where the upper surface of the stratum of the sub-soil is at a level equivalent to -14.9m (minus Fourteen Point Nine metres) OD (Ordnance Datum) or thereabout at its western boundary and -15m (minus Fifteen metres) OD (Ordnance Datum) or thereabouts at its eastern boundary, and the lower surface of the stratum of the sub-soil is at a level equivalent to -33.5m (minus Thirty Three Point Five metres) OD (Ordnance Datum) or thereabout at its western boundary and -33.5m (minus Thirty Three Point Five metres) OD (Ordnance Datum) or thereabouts at its eastern boundary.	65 - London Borough of Hammersmith & Fulham	BGL73213
MNTLA/2316	19.3 square metres of a stratum of subsoil below public road (British Grove) where the upper surface of the stratum of the sub-soil is at a level equivalent to -14.8m (minus Fourteen Point Eight metres) OD (Ordnance Datum) or thereabout at its western boundary and -14.8m (minus Fourteen Point Eight metres) OD (Ordnance Datum) or thereabouts at its eastern boundary, and the lower surface of the stratum of the sub-soil is at a level equivalent to -33.3m (minus Thirty Three Point Three metres) OD (Ordnance Datum) or thereabout at its western boundary and -33.3m (minus Thirty Three Point Three metres) OD (Ordnance Datum) or thereabouts at its eastern boundary.	176 - London Borough of Hounslow	Unregistered
MNTLA/2317	118 square metres of a stratum of subsoil below public road and footways (Great West Road, A4) where the upper surface of the stratum of the sub-soil is at a level equivalent to -14.8m (minus Fourteen Point Eight metres) OD (Ordnance Datum) or thereabout at its western boundary and -14.9m (minus Fourteen Point Nine metres) OD (Ordnance Datum) or thereabouts at its eastern boundary, and the lower surface of the stratum of the sub-soil is at a level equivalent to -33.3m (minus Thirty Three Point Three metres) OD (Ordnance Datum) or thereabout at its western boundary and -33.4m (minus Thirty Three Point Four metres) OD (Ordnance Datum) or thereabouts at its eastern boundary.	180 - London Borough of Hounslow	AGL221551
MNTLA/2318	4.7 square metres of a stratum of subsoil below public road (Great West Road, A4) where the upper surface of the stratum of the sub-soil is at a level equivalent to -14.8m (minus Fourteen Point Eight metres) OD (Ordnance Datum) or thereabout at its western boundary and -14.9m (minus Fourteen Point Nine metres) OD (Ordnance Datum) or thereabouts at its eastern boundary, and the lower surface of the stratum of the sub-soil is at a level equivalent to -33.3m (minus Thirty Three Point Three metres) OD (Ordnance Datum) or thereabout at its western boundary and -33.4m (minus Thirty Three Point Four metres) OD (Ordnance Datum) or thereabouts at its eastern boundary.	54 - London Borough of Hammersmith & Fulham	Unregistered

MNTLA/2319	17.8 square metres of a stratum of subsoil below public road, footways and car parking (British Grove South) where the upper surface of the stratum of the sub-soil is at a level equivalent to -14.9m (minus Fourteen Point Nine metres) OD (Ordnance Datum) or thereabout at its western boundary and -14.9m (minus Fourteen Point Nine metres) OD (Ordnance Datum) or thereabouts at its eastern boundary, and the lower surface of the stratum of the sub-soil is at a level equivalent to -33.4m (minus Thirty Three Point Four metres) OD (Ordnance Datum) or thereabout at its western boundary and -33.4m (minus Thirty Three Point Four metres) OD (Ordnance Datum) or thereabouts at its eastern boundary.	181 - London Borough of Hounslow	Unregistered
MNTLA/2320	1.4 square metres of a stratum of subsoil below public road, footways and car parking (British Grove South) where the upper surface of the stratum of the sub-soil is at a level equivalent to -14.9m (minus Fourteen Point Nine metres) OD (Ordnance Datum) or thereabout at its western boundary and -14.9m (minus Fourteen Point Nine metres) OD (Ordnance Datum) or thereabouts at its eastern boundary, and the lower surface of the stratum of the sub-soil is at a level equivalent to -33.4m (minus Thirty Three Point Four metres) OD (Ordnance Datum) or thereabout at its western boundary and -33.4m (minus Thirty Three Point Four metres) OD (Ordnance Datum) or thereabouts at its eastern boundary.	57 - London Borough of Hammersmith & Fulham	Unregistered
MNTLA/2327	106.6 square metres of a stratum of subsoil below public road and central reservation (Great West Road, A4) where the upper surface of the stratum of the sub-soil is at a level equivalent to -14.8m (minus Fourteen Point Eight metres) OD (Ordnance Datum) or thereabout at its western boundary and -14.9m (minus Fourteen Point Nine metres) OD (Ordnance Datum) or thereabouts at its eastern boundary, and the lower surface of the stratum of the sub-soil is at a level equivalent to -33.3m (minus Thirty Three Point Three metres) OD (Ordnance Datum) or thereabout at its western boundary and -33.4m (minus Thirty Three Point Four metres) OD (Ordnance Datum) or thereabouts at its eastern boundary.	180 - London Borough of Hounslow	BGL72897
MNTLA/2328	55.8 square metres of a stratum of subsoil below public road and footways (Great West Road, A4) where the upper surface of the stratum of the sub-soil is at a level equivalent to -14.8m (minus Fourteen Point Eight metres) OD (Ordnance Datum) or thereabout at its western boundary and -14.9m (minus Fourteen Point Nine metres) OD (Ordnance Datum) or thereabouts at its eastern boundary, and the lower surface of the stratum of the sub-soil is at a level equivalent to -33.3m (minus Thirty Three Point Three metres) OD (Ordnance Datum) or thereabout at its western boundary and -33.4m (minus Thirty Three Point Four metres) OD (Ordnance Datum) or thereabouts at its eastern boundary.	180 - London Borough of Hounslow	AGL205587
MNTLA/2331	3.6 square metres of a stratum of subsoil below public footway (British Grove Passage) where the upper surface of the stratum of the sub-soil is at a level equivalent to -14.9m (minus Fourteen Point Nine metres) OD (Ordnance Datum) or thereabout at its western boundary and -14.9m (minus Fourteen Point Nine metres) OD (Ordnance Datum) or thereabouts at its eastern boundary, and the lower surface of the stratum of the sub-soil is at a level equivalent to -33.5m (minus Thirty Three Point Five metres) OD (Ordnance Datum) or thereabout at its western boundary and -33.5m (minus Thirty Three Point Five metres) OD (Ordnance Datum) or thereabouts at its eastern boundary.	57 - London Borough of Hammersmith & Fulham	Unregistered
MNTLD/2075	11 square metres of a stratum of subsoil below railway and works (Docklands Light Railway - Limhouse and Westferry), and arch (270 to 271, Basin Approach) where the upper surface of the stratum of the sub-soil is at a level equivalent to -41.9m (minus forty one point nine metres) OD (Ordnance Datum) or thereabout at its western boundary and -41.9m (minus forty one point nine metres) OD (Ordnance Datum) or thereabouts at its eastern boundary, and the lower surface of the stratum of the sub-soil is at	84 - London Borough of Tower Hamlets	EGL218237, AGL497529, EGL340304

	a level equivalent to -62.9m (minus sixty two point nine metres) OD (Ordnance Datum) or thereabout at its western boundary and -62.9m (minus sixty two point nine metres) OD (Ordnance Datum) or thereabouts at its eastern boundary.		
MNTLD/2076	237.3 square metres of a stratum of subsoil below railway and works (Docklands Light Railway - Limehouse and Westferry), and arch (270 to 271, Basin Approach) where the upper surface of the stratum of the sub-soil is at a level equivalent to -41.9m (minus forty one point nine metres) OD (Ordnance Datum) or thereabout at its western boundary and -41.9m (minus forty one point nine metres) OD (Ordnance Datum) or thereabouts at its eastern boundary, and the lower surface of the stratum of the sub-soil is at a level equivalent to -62.9m (minus sixty two point nine metres) OD (Ordnance Datum) or thereabout at its western boundary and -62.9m (minus sixty two point nine metres) OD (Ordnance Datum) or thereabouts at its eastern boundary.	85 - London Borough of Tower Hamlets	AGL256879, EGL340304, AGL497529
MNTLD/2077	36.8 square metres of a stratum of subsoil below viaduct carrying railway and works (Docklands Light Railway - Limehouse and Westferry), over public road and footways (Island Row) where the upper surface of the stratum of the sub-soil is at a level equivalent to -41.9m (minus forty one point nine metres) OD (Ordnance Datum) or thereabout at its western boundary and -41.9m (minus forty one point nine metres) OD (Ordnance Datum) or thereabouts at its eastern boundary, and the lower surface of the stratum of the sub-soil is at a level equivalent to -62.9m (minus sixty two point nine metres) OD (Ordnance Datum) or thereabout at its western boundary and -62.9m (minus sixty two point nine metres) OD (Ordnance Datum) or thereabouts at its eastern boundary.	87 - London Borough of Tower Hamlets	Unregistered , AGL256879
MNTLD/2078	0.1 square metres of a stratum of subsoil below viaduct carrying railway and works (Docklands Light Railway - Limehouse and Westferry), over public road and footways (Island Row) where the upper surface of the stratum of the sub-soil is at a level equivalent to -41.9m (minus forty one point nine metres) OD (Ordnance Datum) or thereabout at its western boundary and -41.9m (minus forty one point nine metres) OD (Ordnance Datum) or thereabouts at its eastern boundary, and the lower surface of the stratum of the sub-soil is at a level equivalent to -62.9m (minus sixty two point nine metres) OD (Ordnance Datum) or thereabout at its western boundary and -62.9m (minus sixty two point nine metres) OD (Ordnance Datum) or thereabouts at its eastern boundary.	91 - London Borough of Tower Hamlets	Unregistered , AGL256879, EGL340301
MNTLD/2080	49.8 square metres of a stratum of subsoil below public road and footways (Island Row) where the upper surface of the stratum of the sub-soil is at a level equivalent to -41.9m (minus forty one point nine metres) OD (Ordnance Datum) or thereabout at its western boundary and -41.9m (minus forty one point nine metres) OD (Ordnance Datum) or thereabouts at its eastern boundary, and the lower surface of the stratum of the sub-soil is at a level equivalent to -62.9m (minus sixty two point nine metres) OD (Ordnance Datum) or thereabout at its western boundary and -62.9m (minus sixty two point nine metres) OD (Ordnance Datum) or thereabouts at its eastern boundary.	88 - London Borough of Tower Hamlets	Unregistered , AGL256879
MNTLD/2107	85.8 square metres of a stratum of subsoil below public road and footways (Burdett Road, A1205) where the upper surface of the stratum of the sub-soil is at a level equivalent to -42.5m (minus forty two point five metres) OD (Ordnance Datum) or thereabout at its western boundary and -42.6m (minus forty two point six metres) OD (Ordnance Datum) or thereabouts at its eastern boundary, and the lower surface of the stratum of the sub-soil is at a level equivalent to -63.5m (minus sixty three point five metres) OD (Ordnance Datum) or thereabout at its western boundary and -63.5m (minus sixty three point five metres) OD (Ordnance Datum) or thereabouts at its eastern boundary.	127 - London Borough of Tower Hamlets	Unregistered



MNTLD/2108	121.3 square metres of a stratum of subsoil below public road, footways and grassed areas (Burdett Road, A1205) where the upper surface of the stratum of the sub-soil is at a level equivalent to -42.5m (minus forty two point five metres) OD (Ordnance Datum) or thereabout at its western boundary and -42.6m (minus forty two point six metres) OD (Ordnance Datum) or thereabouts at its eastern boundary, and the lower surface of the stratum of the sub-soil is at a level equivalent to -63.5m (minus sixty three point five metres) OD (Ordnance Datum) or thereabout at its western boundary and -63.5m (minus sixty three point five metres) OD (Ordnance Datum) or thereabouts at its eastern boundary.	126 - London Borough of Tower Hamlets	NGL439992
MNTLD/2138	121.3 square metres of a stratum of subsoil below railway and works (Docklands Light Railway - Devons Road and Langdon Park) above where the upper surface of the stratum of the sub-soil is at a level equivalent to -43.8m (minus forty three point eight metres) OD (Ordnance Datum) or thereabout at its western boundary and -43.9m (minus forty three point nine metres) OD (Ordnance Datum) or thereabouts at its eastern boundary, and the lower surface of the stratum of the sub-soil is at a level equivalent to -64.8m (minus sixty four point eight metres) OD (Ordnance Datum) or thereabout at its western boundary and -64.8m (minus sixty four point eight metres) OD (Ordnance Datum) or thereabouts at its eastern boundary.	177 - London Borough of Tower Hamlets	EGL340386
MNTLD/2148	324.2 square metres of a stratum of subsoil below public road, footways and central reservation (Blackwall Tunnel Northern Approach (A12) where the upper surface of the stratum of the sub-soil is at a level equivalent to -44.3m (minus forty four point three metres) OD (Ordnance Datum) or thereabout at its western boundary and -44.4m (minus forty four point four metres) OD (Ordnance Datum) or thereabouts at its eastern boundary, and the lower surface of the stratum of the sub-soil is at a level equivalent to -65.3m (minus sixty five point three metres) OD (Ordnance Datum) or thereabout at its western boundary and -65.4m (minus sixty five point four metres) OD (Ordnance Datum) or thereabouts at its eastern boundary.	189 - London Borough of Tower Hamlets	NGL439756
MNTLD/2151	100.3 square metres of a stratum of subsoil below public road and footways (Gillender Street) where the upper surface of the stratum of the sub-soil is at a level equivalent to -44.4m (minus forty four point four metres) OD (Ordnance Datum) or thereabout at its western boundary and -44.4m (minus forty four point four metres) OD (Ordnance Datum) or thereabouts at its eastern boundary, and the lower surface of the stratum of the sub-soil is at a level equivalent to -65.4m (minus sixty five point four metres) OD (Ordnance Datum) or thereabout at its western boundary and -65.4m (minus sixty five point four metres) OD (Ordnance Datum) or thereabouts at its eastern boundary.	194 - London Borough of Tower Hamlets	NGL439756
MNTLD/2176	469.8 square metres of a stratum of subsoil below railway and works (Hammersmith and City line and District line) where the upper surface of the stratum of the sub-soil is at a level equivalent to -45.1m (minus forty five point one metres) OD (Ordnance Datum) or thereabout at its western boundary and -45.2m (minus forty five point two metres) OD (Ordnance Datum) or thereabouts at its eastern boundary, and the lower surface of the stratum of the sub-soil is at a level equivalent to -66m (minus sixty six metres) OD (Ordnance Datum) or thereabout at its western boundary and -66.1m (minus sixty six point one metres) OD (Ordnance Datum) or thereabouts at its eastern boundary.	16 - London Borough of Newham	AGL354328
MNTLD/2209	22.3 square metres of a stratum of subsoil below public road, footways and central reservation (Blackwall Tunnel Northern Approach (A12) where the upper surface of the stratum of the sub-soil is at a level equivalent to -44.4m (minus forty four point four metres) OD (Ordnance Datum) or thereabout at its western boundary and -44.4m (minus forty four point four metres) OD (Ordnance Datum) or thereabouts at its eastern boundary.	191 - London Borough of Tower Hamlets	NGL439756

	(Ordnance Datum) or thereabouts at its eastern boundary, and the lower surface of the stratum of the sub-soil is at a level equivalent to -65.4m (minus sixty five point four metres) OD (Ordnance Datum) or thereabout at its western boundary and -65.4m (minus sixty five point four metres) OD (Ordnance Datum) or thereabouts at its eastern boundary.		
MNTLD/2210	25.7 square metres of a stratum of subsoil below public road, footways and central reservation (Blackwall Tunnel Northern Approach (A12) where the upper surface of the stratum of the sub-soil is at a level equivalent to -44.4m (minus forty four point four metres) OD (Ordnance Datum) or thereabout at its western boundary and -44.4m (minus forty four point four metres) OD (Ordnance Datum) or thereabouts at its eastern boundary, and the lower surface of the stratum of the sub-soil is at a level equivalent to -65.4m (minus sixty five point four metres) OD (Ordnance Datum) or thereabout at its western boundary and -65.4m (minus sixty five point four metres) OD (Ordnance Datum) or thereabouts at its eastern boundary.	191 - London Borough of Tower Hamlets	164199
MNTLD/2213	57.6 square metres of a stratum of subsoil below public road, footways and central reservation (Blackwall Tunnel Northern Approach (A12) where the upper surface of the stratum of the sub-soil is at a level equivalent to -44.3m (minus forty four point three metres) OD (Ordnance Datum) or thereabout at its western boundary and -44.4m (minus forty four point four metres) OD (Ordnance Datum) or thereabouts at its eastern boundary, and the lower surface of the stratum of the sub-soil is at a level equivalent to -65.3m (minus sixty five point three metres) OD (Ordnance Datum) or thereabout at its western boundary and -65.4m (minus sixty five point four metres) OD (Ordnance Datum) or thereabouts at its eastern boundary.	189 - London Borough of Tower Hamlets	LN80770
MNTLD/2224	7.5 square metres of a stratum of subsoil below public road and footways (Burdett Road, A1205) where the upper surface of the stratum of the sub-soil is at a level equivalent to -42.5m (minus forty two point five metres) OD (Ordnance Datum) or thereabout at its western boundary and -42.5m (minus forty two point five metres) OD (Ordnance Datum) or thereabouts at its eastern boundary, and the lower surface of the stratum of the sub-soil is at a level equivalent to -63.5m (minus sixty three point five metres) OD (Ordnance Datum) or thereabout at its western boundary and -63.5m (minus sixty three point five metres) OD (Ordnance Datum) or thereabouts at its eastern boundary.	127 - London Borough of Tower Hamlets	NGL439992
MNTLD/2227	0.4 square metres of a stratum of subsoil below public footways (Commercial Road, A13) where the upper surface of the stratum of the sub-soil is at a level equivalent to -42.1m (minus forty two point one metres) OD (Ordnance Datum) or thereabout at its western boundary and -42.1m (minus forty two point one metres) OD (Ordnance Datum) or thereabouts at its eastern boundary, and the lower surface of the stratum of the sub-soil is at a level equivalent to -63.1m (minus sixty three point one metres) OD (Ordnance Datum) or thereabout at its western boundary and -63.1m (minus sixty three point one metres) OD (Ordnance Datum) or thereabouts at its eastern boundary.	105 - London Borough of Tower Hamlets	268496
MNTLD/2229	0.7 square metres of a stratum of subsoil below railway and works (Docklands Light Railway - Devons Road and Langdon Park) above where the upper surface of the stratum of the sub-soil is at a level equivalent to -43.8m (minus forty three point eight metres) OD (Ordnance Datum) or thereabout at its western boundary and -43.9m (minus forty three point nine metres) OD (Ordnance Datum) or thereabouts at its eastern boundary, and the lower surface of the stratum of the sub-soil is at a level equivalent to -64.8m (minus sixty four point eight metres) OD (Ordnance Datum) or thereabout at its western boundary and -64.8m (minus sixty four point eight metres) OD (Ordnance Datum) or thereabouts at its eastern	179 - London Borough of Tower Hamlets	EGL340386

	boundary.		
MNTLD/2269	121.7 square metres of a stratum of subsoil below public road, footways and central reservation (Commercial Road, A13) where the upper surface of the stratum of the sub-soil is at a level equivalent to -42.1m (minus forty two point one metres) OD (Ordnance Datum) or thereabout at its western boundary and -42.1m (minus forty two point one metres) OD (Ordnance Datum) or thereabouts at its eastern boundary, and the lower surface of the stratum of the sub-soil is at a level equivalent to -63.1m (minus sixty three point one metres) OD (Ordnance Datum) or thereabout at its western boundary and -63.1m (minus sixty three point one metres) OD (Ordnance Datum) or thereabouts at its eastern boundary.	105 - London Borough of Tower Hamlets	Unregistered
MNTLD/2272	0.5 square metres of a stratum of subsoil below public road, footways and central reservation (Blackwall Tunnel Northern Approach (A12) where the upper surface of the stratum of the sub-soil is at a level equivalent to -44.4m (minus forty four point four metres) OD (Ordnance Datum) or thereabout at its western boundary and -44.4m (minus forty four point four metres) OD (Ordnance Datum) or thereabouts at its eastern boundary, and the lower surface of the stratum of the sub-soil is at a level equivalent to -65.4m (minus sixty five point four metres) OD (Ordnance Datum) or thereabout at its western boundary and -65.4m (minus sixty five point four metres) OD (Ordnance Datum) or thereabouts at its eastern boundary.	191 - London Borough of Tower Hamlets	Unregistered
MNTLD/2273	41.1 square metres of a stratum of subsoil below public road and footways (Gillender Street) where the upper surface of the stratum of the sub-soil is at a level equivalent to -44.5m (minus forty four point five metres) OD (Ordnance Datum) or thereabout at its western boundary and -44.5m (minus forty four point five metres) OD (Ordnance Datum) or thereabouts at its eastern boundary, and the lower surface of the stratum of the sub-soil is at a level equivalent to -65.4m (minus sixty five point four metres) OD (Ordnance Datum) or thereabout at its western boundary and -65.4m (minus sixty five point four metres) OD (Ordnance Datum) or thereabouts at its eastern boundary.	197 - London Borough of Tower Hamlets	Unregistered
MNTLD/2274	15.1 square metres of a stratum of subsoil below public road and footways (Gillender Street) where the upper surface of the stratum of the sub-soil is at a level equivalent to -44.4m (minus forty four point four metres) OD (Ordnance Datum) or thereabout at its western boundary and -44.5m (minus forty four point five metres) OD (Ordnance Datum) or thereabouts at its eastern boundary, and the lower surface of the stratum of the sub-soil is at a level equivalent to -65.4m (minus sixty five point four metres) OD (Ordnance Datum) or thereabout at its western boundary and -65.4m (minus sixty five point four metres) OD (Ordnance Datum) or thereabouts at its eastern boundary.	191 - London Borough of Tower Hamlets	Unregistered

**EXECUTION PAGE**

The Common seal of **Thames Water** )  
**Utilities Limited** was affixed in the )  
presence of: )



2024-1780

Jacqueline Sandison  
Senior Legal Counsel

.....  
Authorised Signatory

17 July 2024

.....  
Date

This map is reproduced from Ordnance Survey material with permission of Ordnance Survey on behalf of the Controller of Her Majesty's Stationery Office. © Crown Copyright. Unauthorised reproduction in any form is prohibited and may lead to prosecution or civil proceedings. 100022-02 2024



2024-1781  
18/11/2024

The Common seal of Thames Water Utilities Limited was affixed in the presence of:

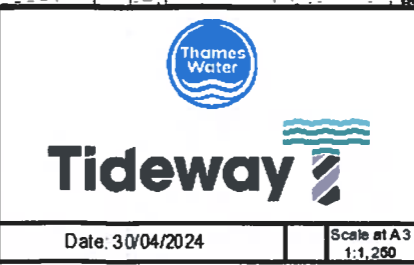
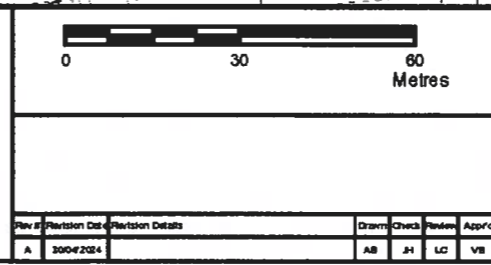
*[Signature]*  
Authorised Signatory

Dated: 17 July 2024

Key

Permanent Acquisition of Land

Jacqueline Sandison  
Senior Legal Counsel



The Thames Water Utilities Limited (Thames Tideway Tunnel) Order 2014 (AS AMENDED) SI 2014 NO. 2384

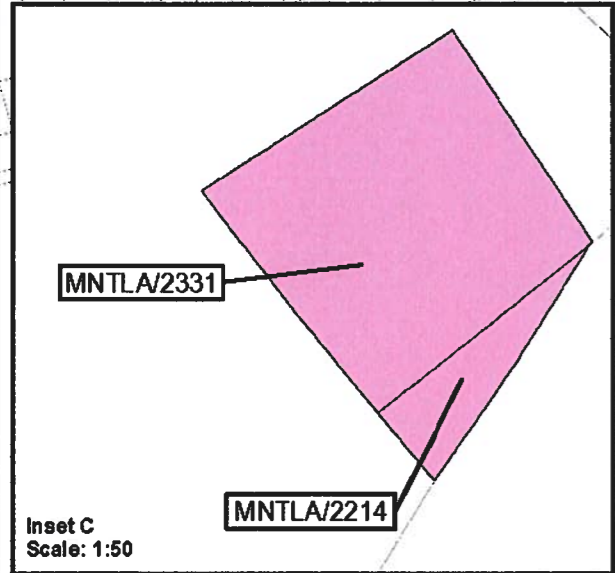
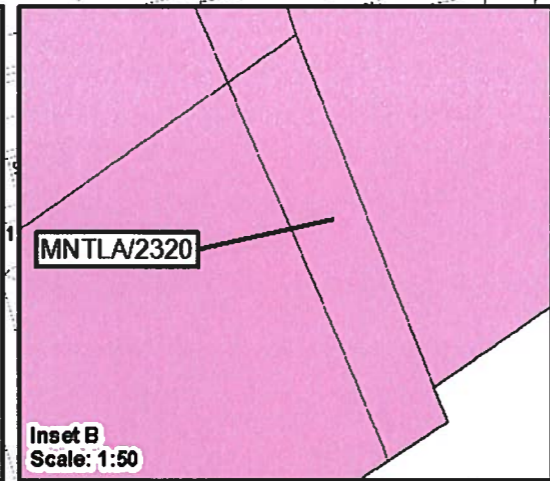
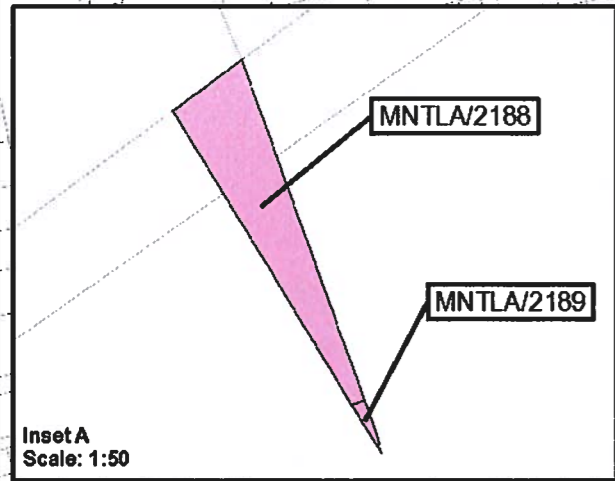
Plan referred to in General Vesting Declaration No. 42 of The Thames Water Utilities Limited (Thames Tideway Tunnel) Order 2014 (AS AMENDED) SI 2014 NO. 2384

For identification only

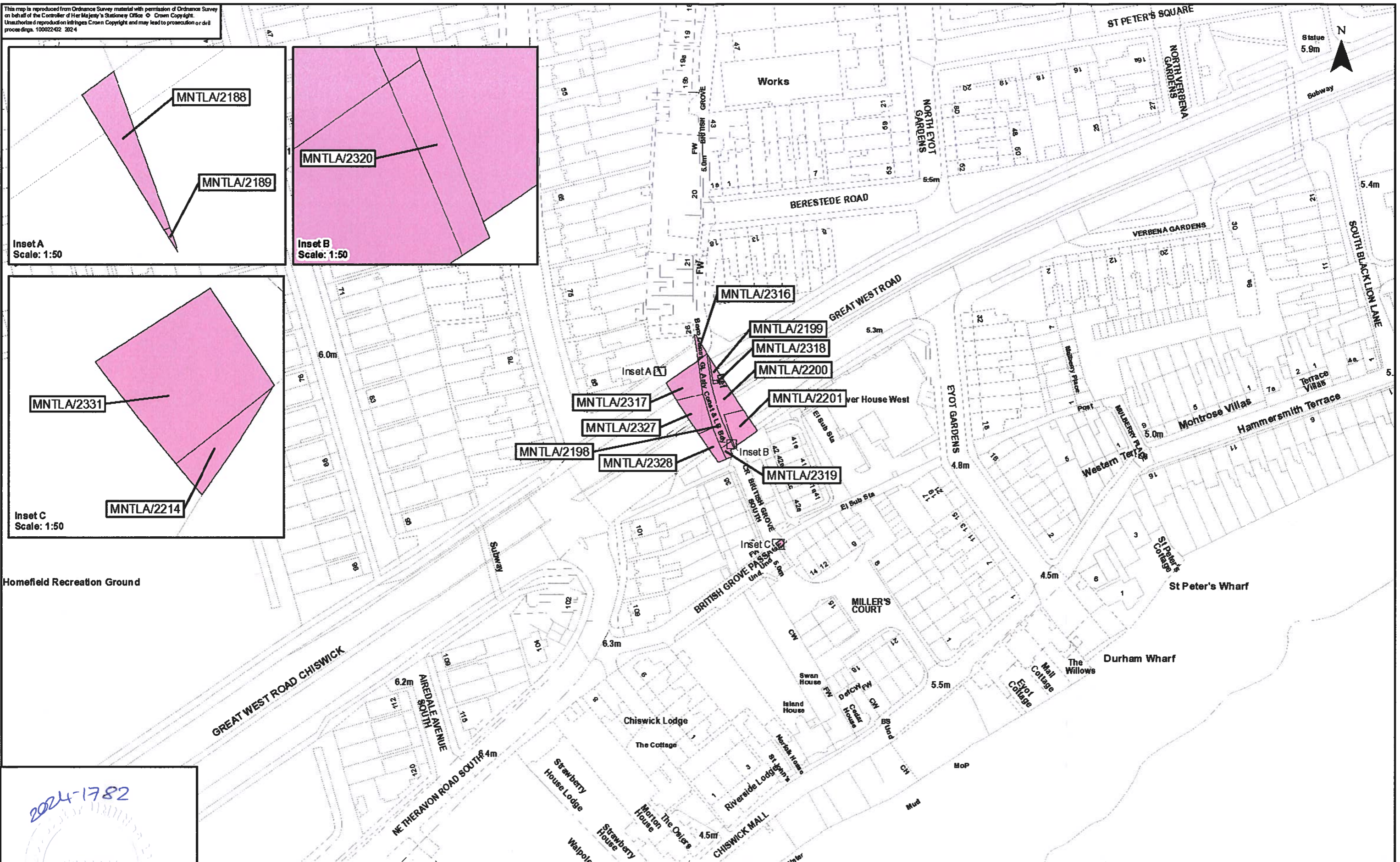
Document Reference  
70054885-NTC-GVD-TR182-GVD-0001


Rev #	Revision Date	Revision Details	Drawn	Check	Issue	App'd
A	30/04/2024		AB	JH	LC	VR


This map is reproduced from Ordnance Survey material with permission of Ordnance Survey on behalf of the Controller of Her Majesty's Stationery Office © Crown Copyright. Unauthorised reproduction infringes Crown Copyright and may lead to prosecution or civil proceedings. 100022402 2024



Homefield Recreation Ground



The Common seal of Thames Water Utilities Limited was affixed in the presence of:  
  
 Authorised Signatory  
 Dated: 17 July 2024

**Key**  
 Permanent Acquisition of Land  
 Jacqueline Sandison  
 Senior Legal Counsel

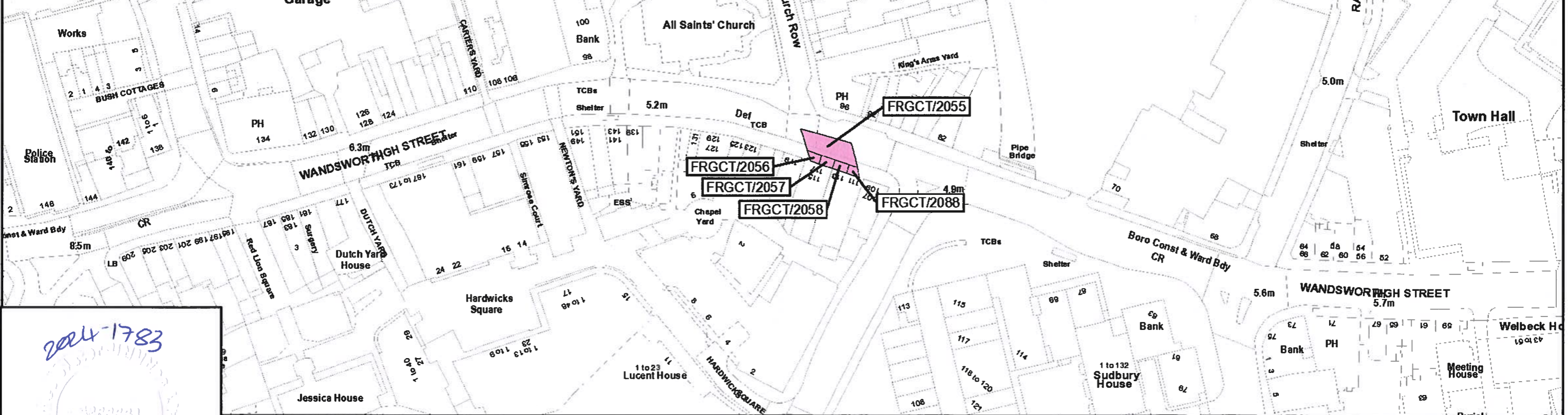
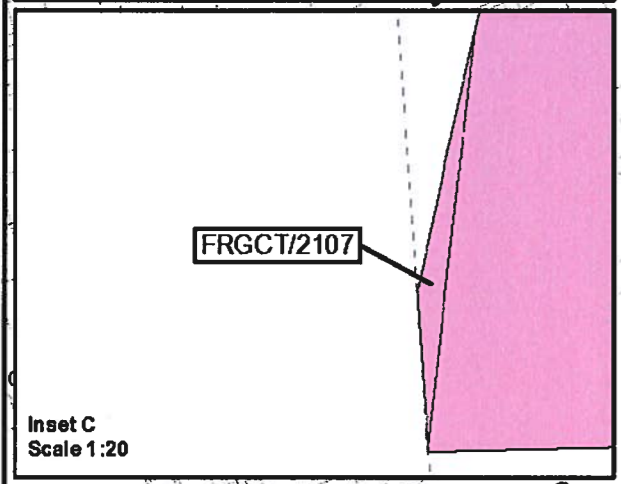
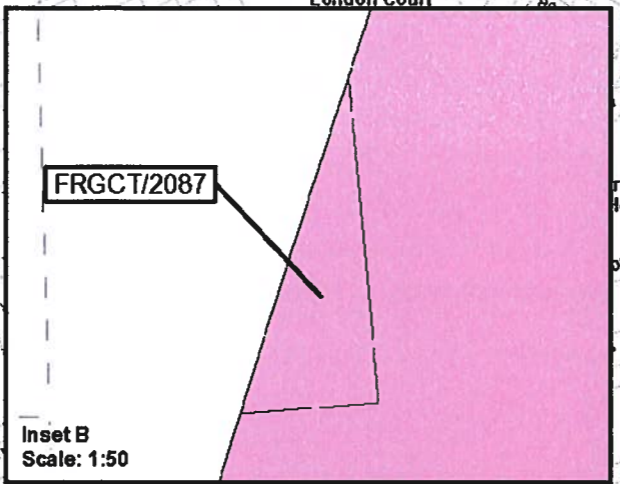
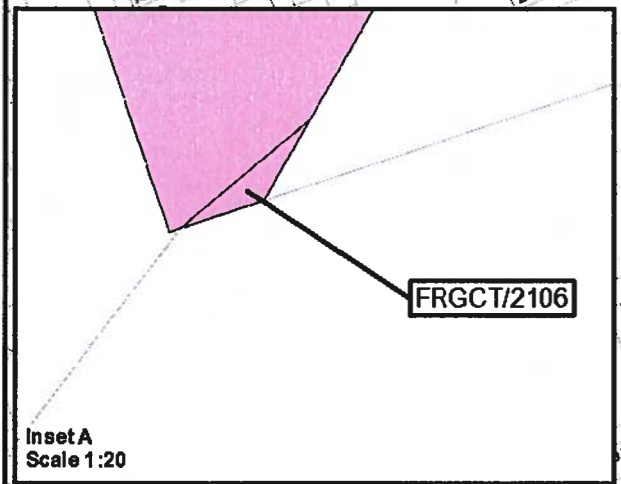
0 30 60 Metres																	
<table border="1"> <thead> <tr> <th>Rev</th> <th>Revision</th> <th>Date</th> <th>Revision Details</th> <th>Drawn</th> <th>Check</th> <th>Revise</th> <th>App'd</th> </tr> </thead> <tbody> <tr> <td>A</td> <td>30042024</td> <td></td> <td></td> <td>AB</td> <td>JH</td> <td>LD</td> <td>VB</td> </tr> </tbody> </table>		Rev	Revision	Date	Revision Details	Drawn	Check	Revise	App'd	A	30042024			AB	JH	LD	VB
Rev	Revision	Date	Revision Details	Drawn	Check	Revise	App'd										
A	30042024			AB	JH	LD	VB										



Thames Water  
**Tideway**  
 Date: 30/04/2024  
 Scale at A3: 1:1,250

The Thames Water Utilities Limited (Thames Tideway Tunnel) Order 2014 (AS AMENDED) SI 2014 NO.2384  
 Planning Title  
 Plan referred to in General Vesting Declaration No. 42 of The Thames Water Utilities Limited (Thames Tideway Tunnel) Order 2014 (AS AMENDED) SI 2014 NO.2384  
 For identification only  
 Document Reference  
 70054885-NTC-GVD-TR1&2-GVD42-0002

This map is reproduced from Ordnance Survey material with permission of Ordnance Survey on behalf of the Controller of Her Majesty's Stationery Office. Crown Copyright. Unauthorised reproduction on any medium is prohibited and may lead to prosecution or civil proceedings. 100022-02 2024



2024-1783

The Common seal of Thames Water Utilities Limited was affixed in the presence of:

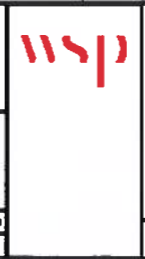
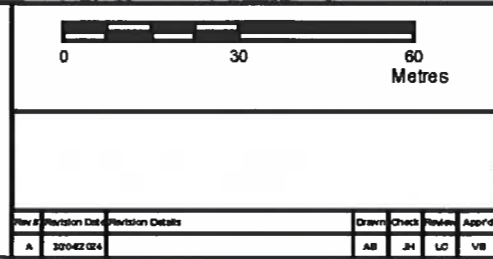
Authorised Signatory

Dated: 17 July 2024

Key

Permanent Acquisition of Land

Jacqueline Sandison  
Senior Legal Counsel



The Thames Water Utilities Limited (Thames Tideway Tunnel) Order 2014 (AS AMENDED) SI 2014 NO. 2384

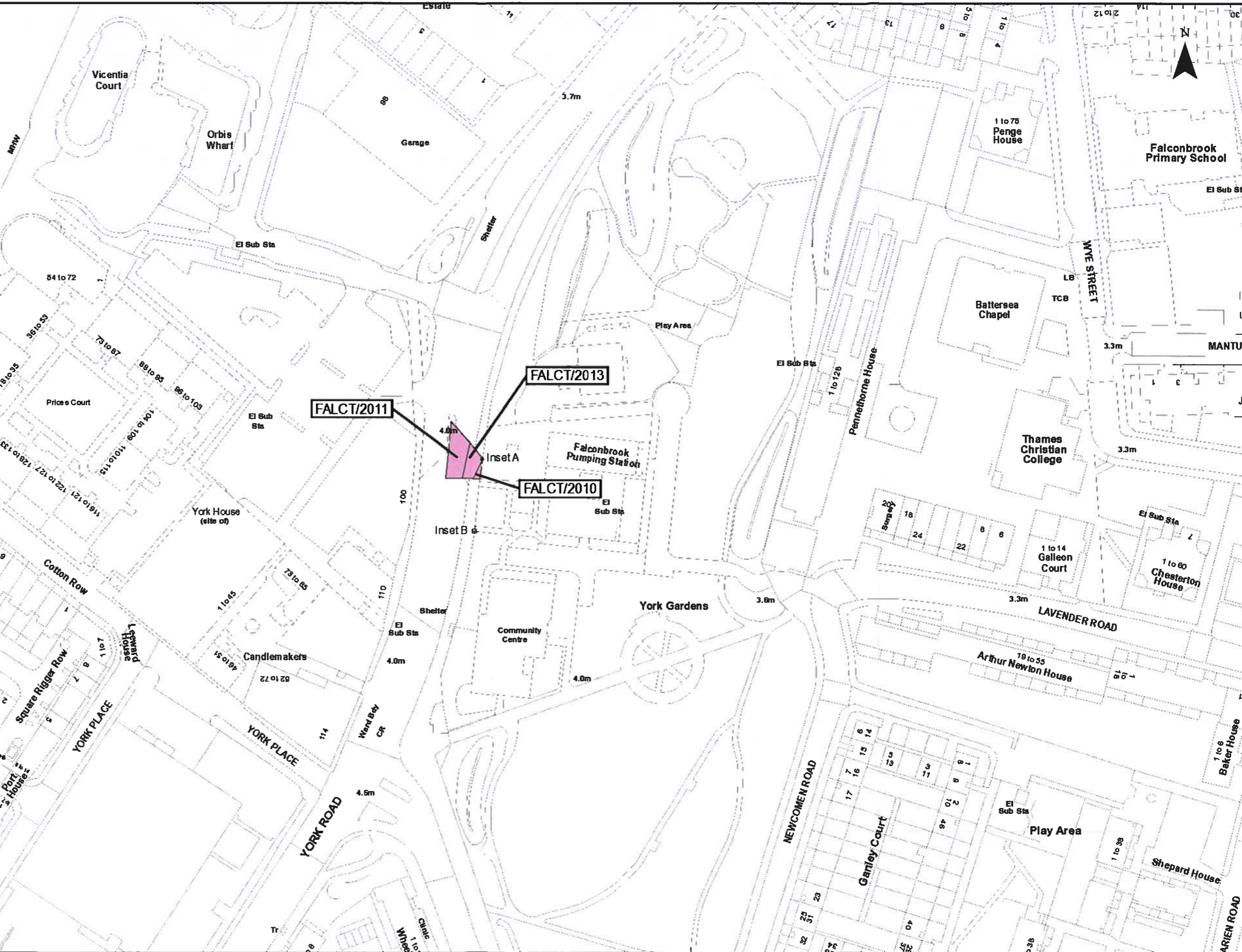
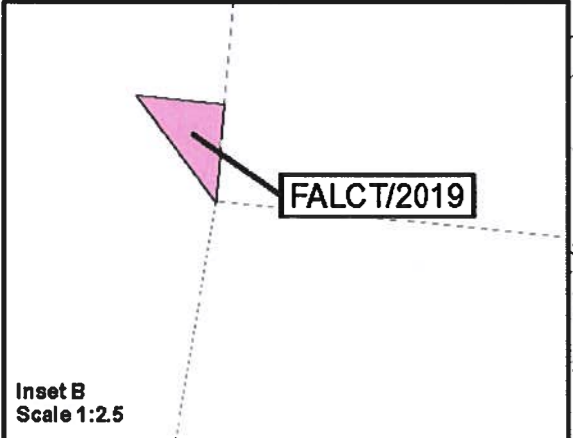
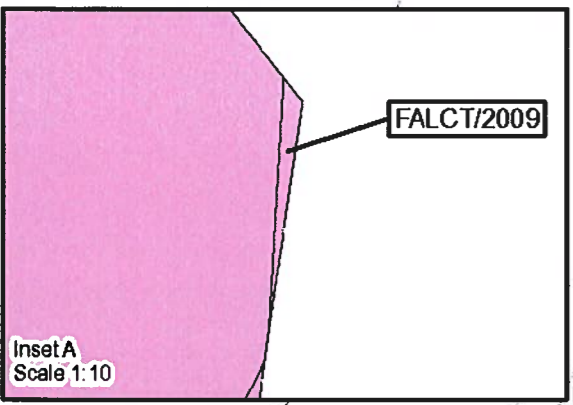
Plan referred to in General Vesting Declaration No. 42 of The Thames Water Utilities Limited (Thames Tideway Tunnel) Order 2014 (AS AMENDED) SI 2014 NO. 2384

For identification only

Document Reference  
70054885-NTC-GVD-TR1&2-GVD-42-0003

This map is reproduced from Ordnance Survey material with permission of Ordnance Survey on behalf of the Controller of Her Majesty's Stationery Office. Crown Copyright. Unauthorised reproduction in whole or in part is prohibited. 100022402 2024

Shingle



The Common seal of Thames Water Utilities Limited was affixed in the presence of:

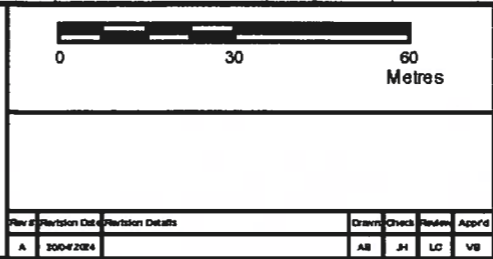
Authorised Signatory: *[Signature]*

Dated: 17 July 2024

Key

Permanent Acquisition of Land

Jacqueline Sandison  
Senior Legal Counsel



**Tideway**

Date: 30/04/2024

Scale at A3: 1:1,250

The Thames Water Utilities Limited (Thames Tideway Tunnel) Order 2014 (AS AMENDED) SI 2014 NO. 2384

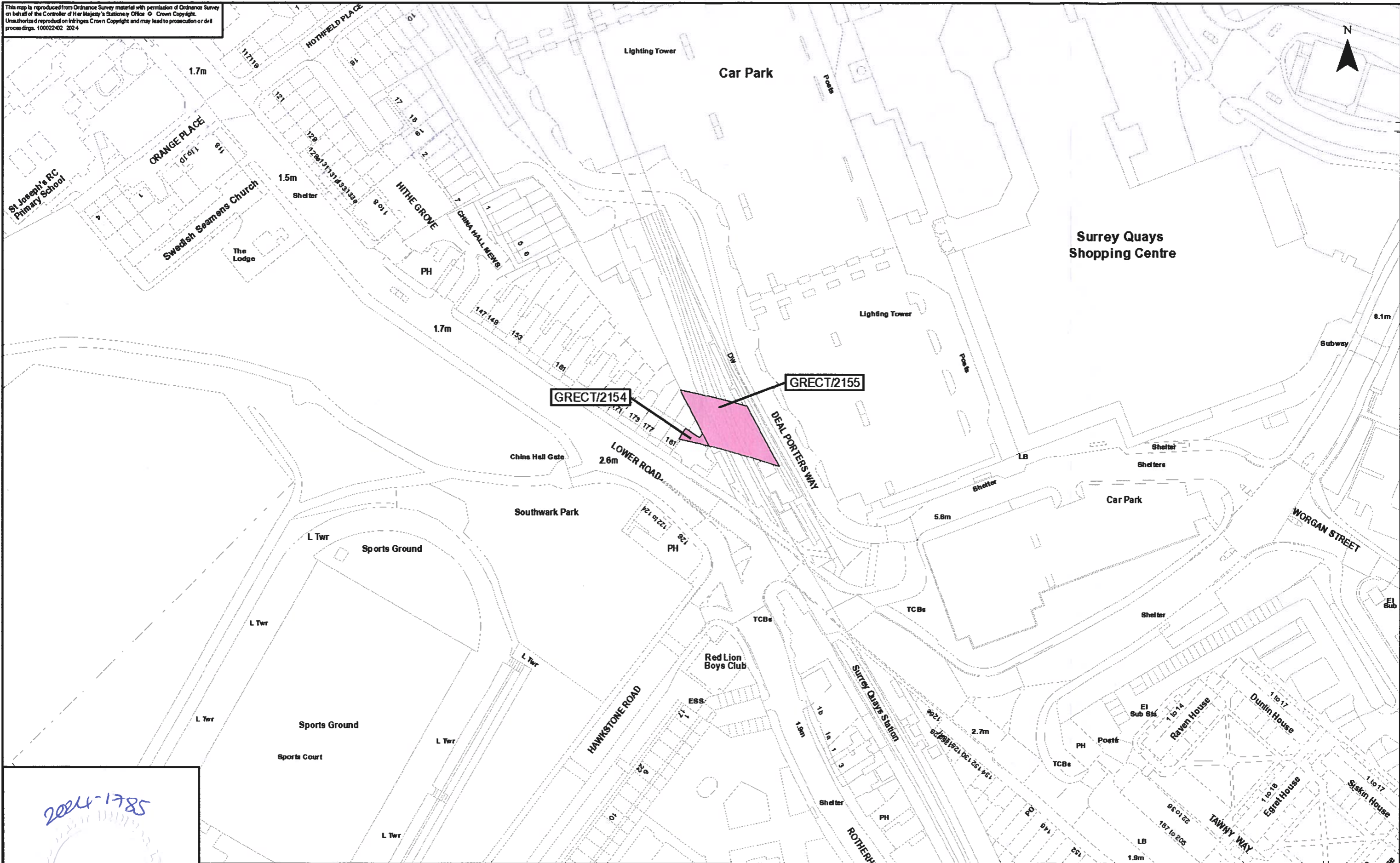
Plan referred to in General Vesting Declaration No. 42 of The Thames Water Utilities Limited (Thames Tideway Tunnel) Order 2014 (AS AMENDED) SI 2014 NO. 2384

For identification only

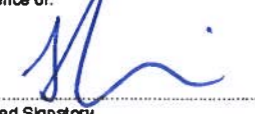
Document Reference: 70054885-NTC-GVD-TR1&2-GVD-0004




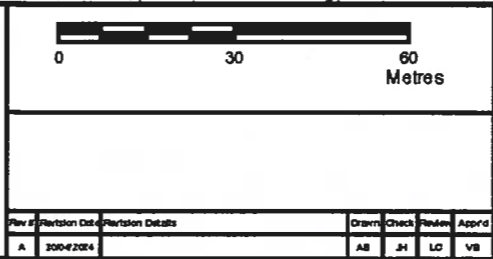
This map is reproduced from Ordnance Survey material with permission of Ordnance Survey on behalf of the Controller of Her Majesty's Stationery Office. © Crown Copyright. Unauthorised reproduction infringes Crown Copyright and may lead to prosecution or civil proceedings. 100022452 2024



2024-1785  


The Common seal of Thames Water Utilities Limited was affixed in the presence of:  
  
 Authorised Signatory  
 Dated: 17 July 2024

Key  
 Permanent Acquisition of Land  
 Jacqueline Sandison  
 Senior Legal Counsel





Date: 30/04/2024  
 Scale at A3  
 1:1,250

AS 714:  
 The Thames Water Utilities Limited (Thames Tideway Tunnel) Order 2014 (AS AMENDED) SI 2014 NO. 2384  
 Drawing Title:  
 Plan referred to in General Vesting Declaration No. 42 of The Thames Water Utilities Limited (Thames Tideway Tunnel) Order 2014 (AS AMENDED) SI 2014 NO. 2384  
 Status:  
 For identification only  
 Document Reference:  
 70054885-N TC-GVD-TR1&2-GVD42-0005

This map is reproduced from Ordnance Survey material with permission of Ordnance Survey on behalf of the Controller of Her Majesty's Stationery Office. Crown Copyright. Unauthorised reproduction infringes Crown Copyright and may lead to prosecution or civil proceedings. 100022422 2024

**Inset A**  
Scale 1:20

MNTLD/2078

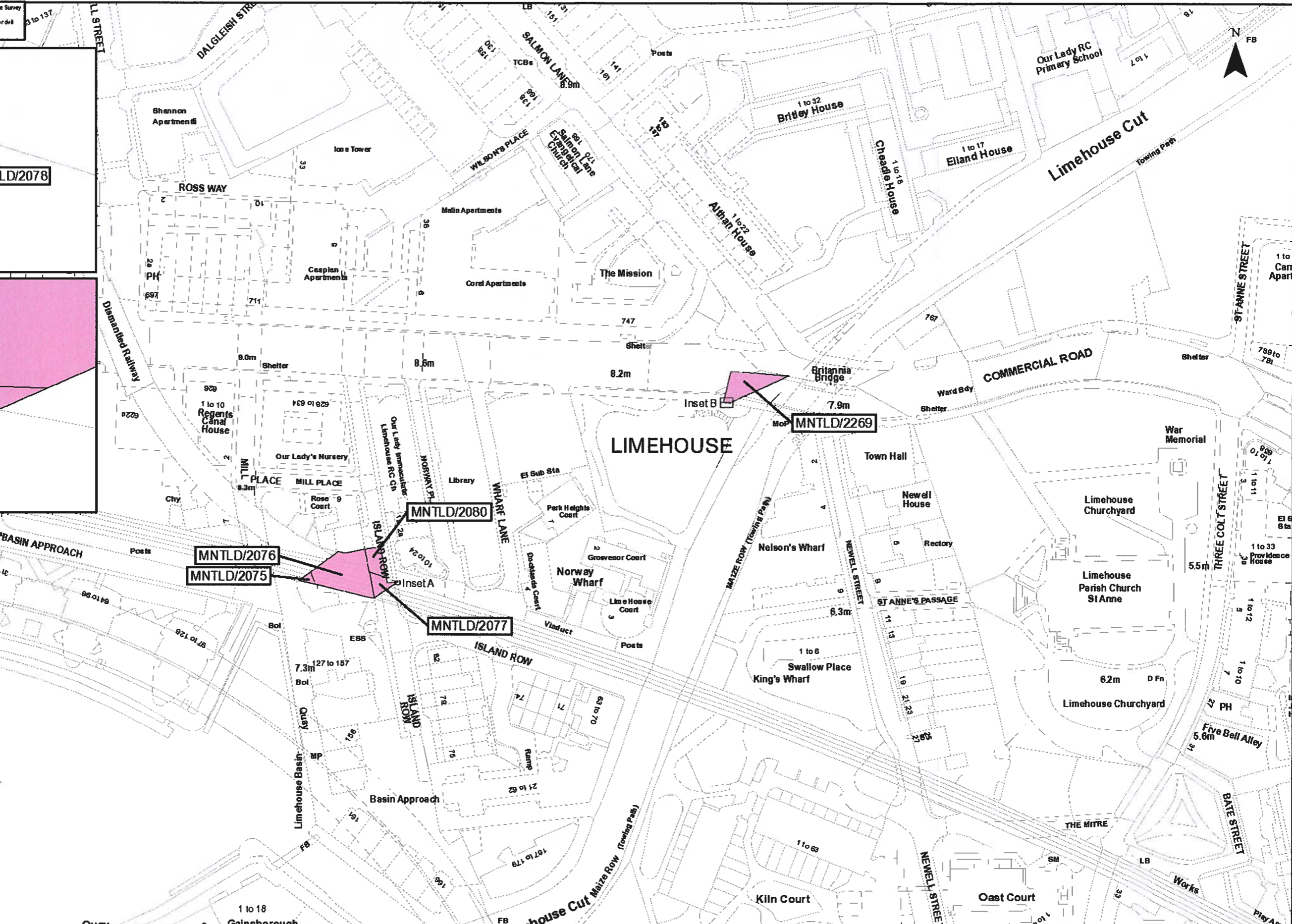
**Inset B**  
Scale 1:50

MNTLD/2227

**Inset C**  
Scale 1:50

MNTLD/2076  
MNTLD/2075

2024-17-786  
33333



The Common seal of Thames Water Utilities Limited was affixed in the presence of:

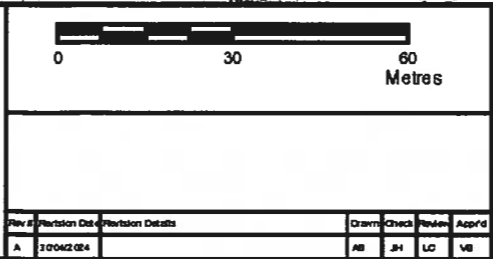
Authorised Signatory

Dated: 17 July 2024

**Key**

Permanent Acquisition of Land

Jacqueline Sandison  
Senior Legal Counsel



**Tideway**

Date: 30/04/2024

Scale at A3 1:1,250

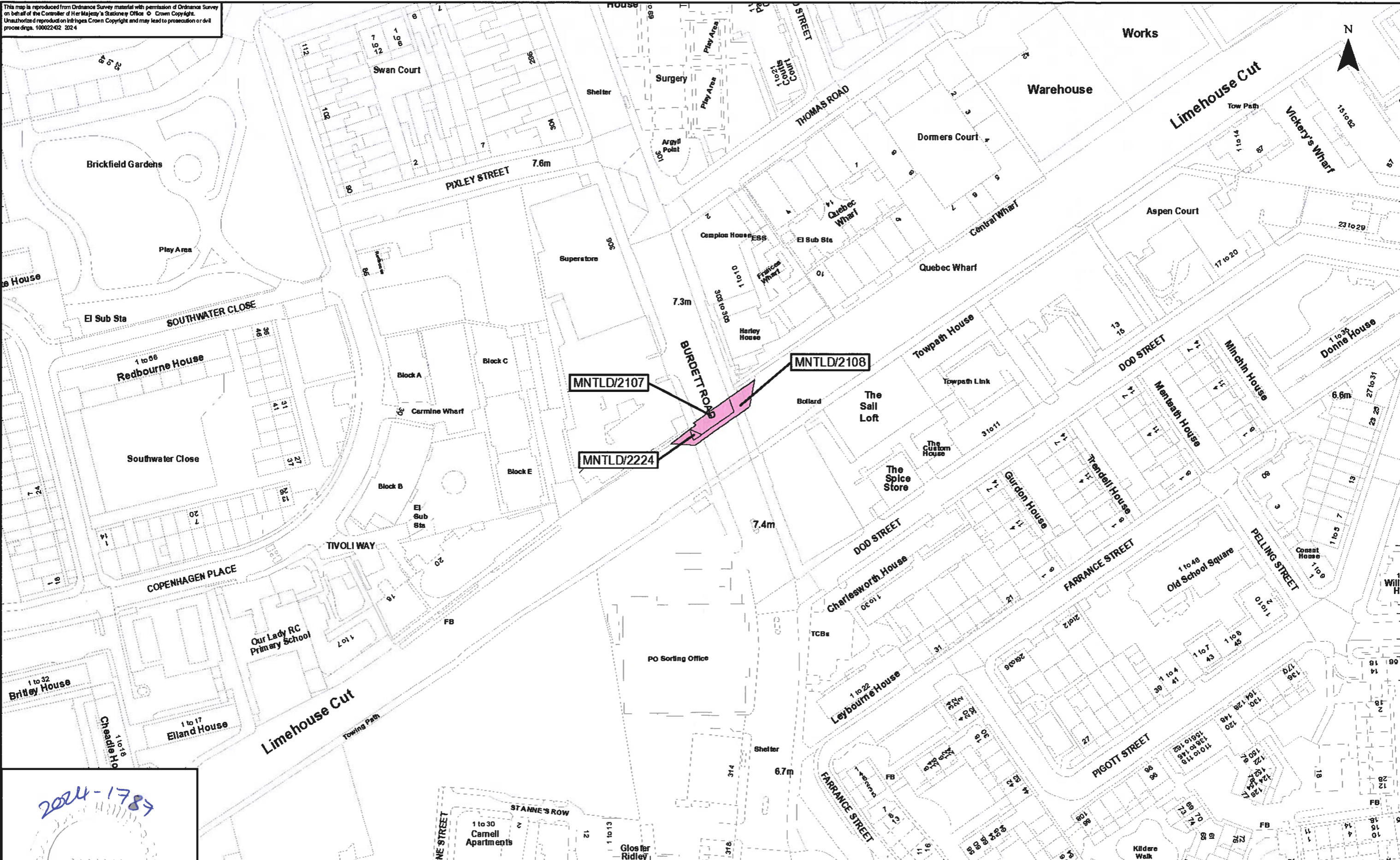
The Thames Water Utilities Limited (Thames Tideway Tunnel) Order 2014 (AS AMENDED) SI 2014 NO.2384

Plan referred to in General Vesting Declaration No. 42 of The Thames Water Utilities Limited (Thames Tideway Tunnel) Order 2014 (AS AMENDED) SI 2014 NO.2384


For identification only


Document Reference 70054885-NTC-GVD-TR1&2-GVD 42-0006

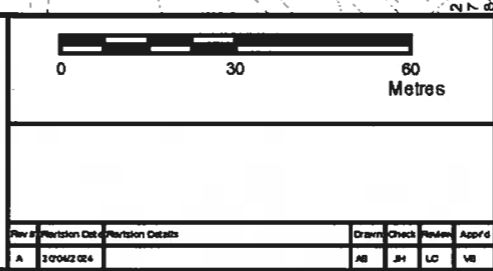


This map is reproduced from Ordnance Survey material with permission of Ordnance Survey on behalf of the Controller of Her Majesty's Stationery Office. Crown Copyright. Unauthorised reproduction on infringes Crown Copyright and may lead to prosecution or civil proceedings. 100022422 2024



2024-1787  
 2433331

The Common seal of Thames Water Utilities Limited was affixed in the presence of:  
  
 Authorised Signatory  
 Dated: 17 July 2024

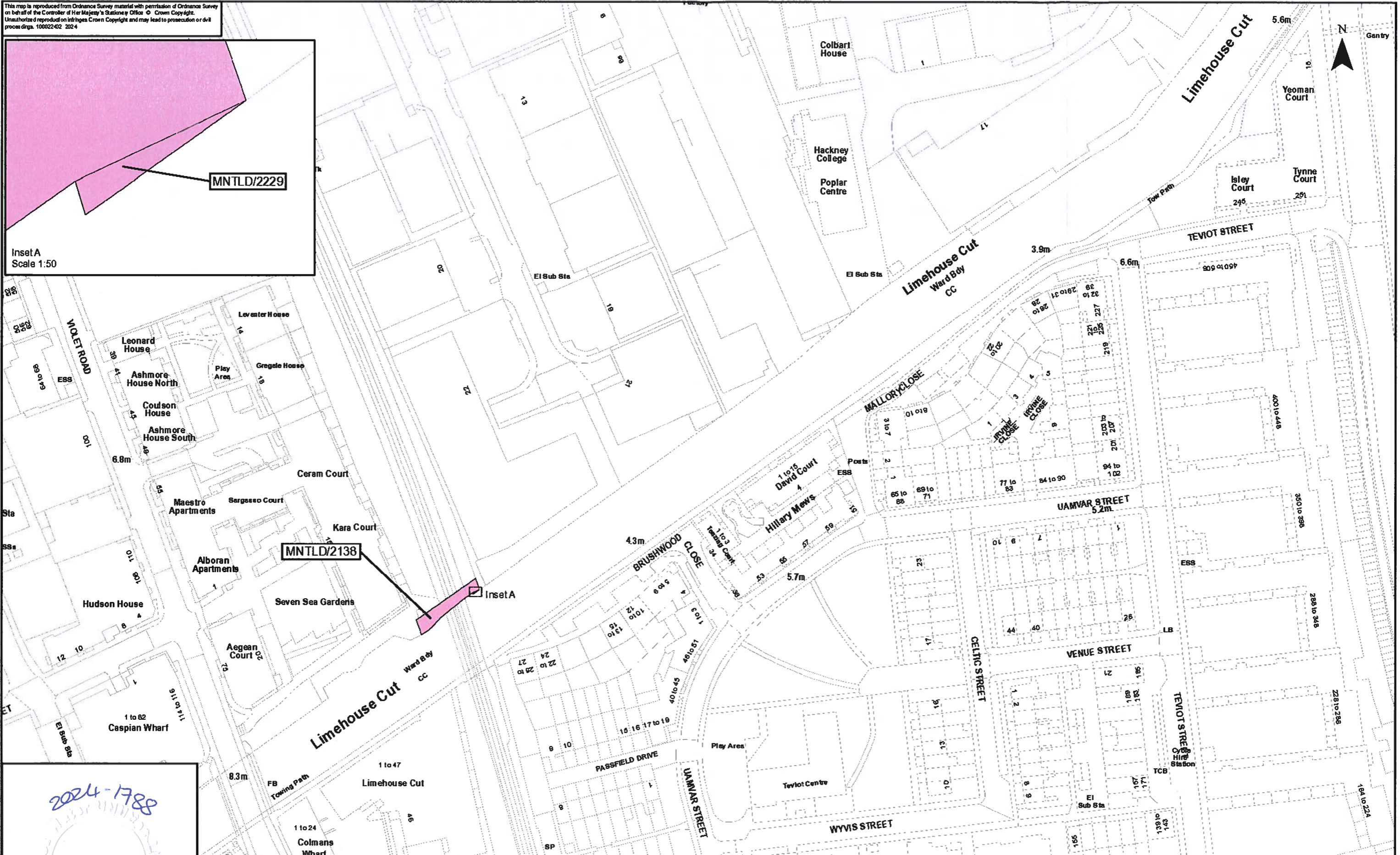
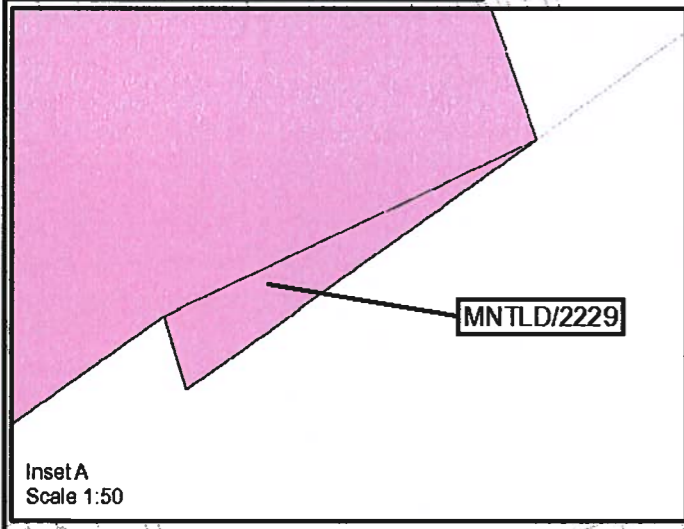
Key  
 Permanent Acquisition of Land  
 Jacqueline Sandison  
 Senior Legal Counsel

Date: 30/04/2024  
 Scale at A3  
 1:1,250

The Thames Water Utilities Limited (Thames Tideway Tunnel) Order 2014 (AS AMENDED) SI 2014 NO. 2384  
 Plan referred to in General Vesting Declaration No. 42 of The Thames Water Utilities Limited (Thames Tideway Tunnel) Order 2014 (AS AMENDED) SI 2014 NO. 2384  
 For identification only  
 Document Reference  
 70054885-NTC-GVD-TR1&2-GVD 42-0007

This map is reproduced from Ordnance Survey material with permission of Ordnance Survey on behalf of the Controller of Her Majesty's Stationery Office. © Crown Copyright. Unauthorised reproduction on infringes Crown Copyright and may lead to prosecution or civil proceedings. 100022402 2024



2024-1788

The Common seal of Thames Water Utilities Limited was affixed in the presence of:

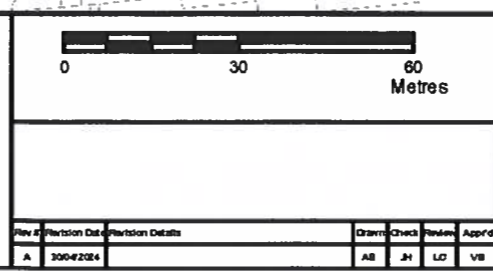
Authorised Signatory

Dated: 17 July 2024

Key

Permanent Acquisition of Land

Jacqueline Sandison  
Senior Legal Counsel



**Tideway**

Date: 30/04/2024

Scale at A3  
1:1,250

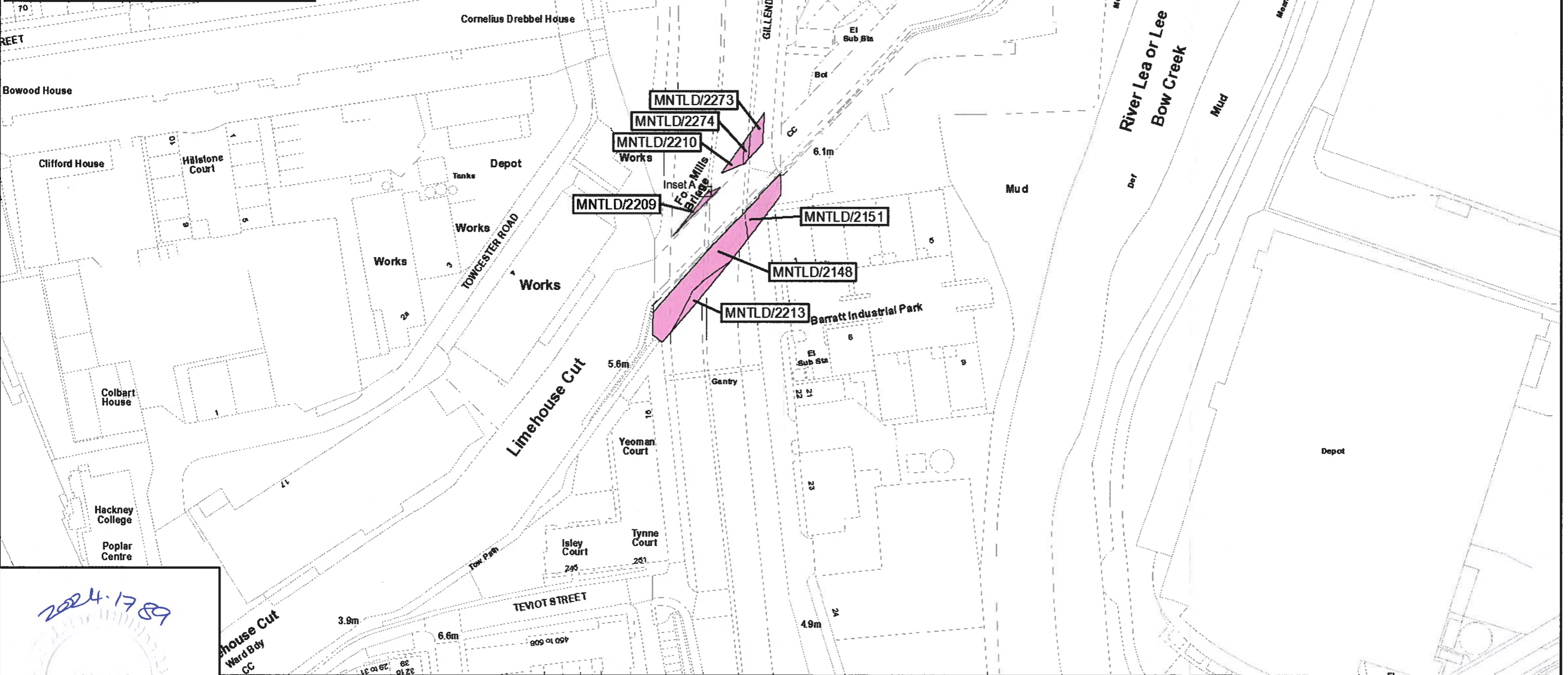
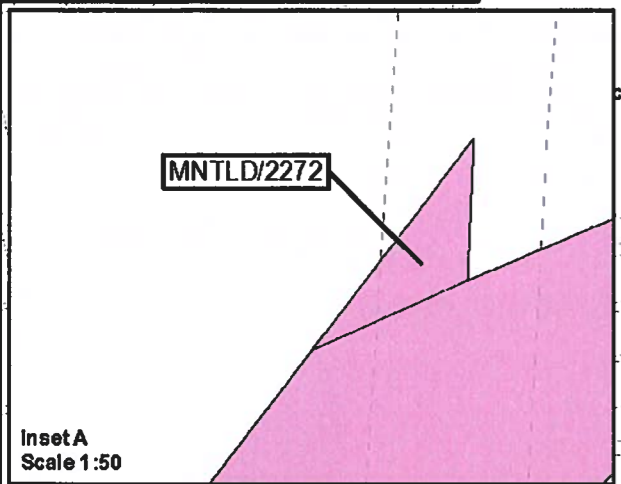
The Thames Water Utilities Limited (Thames Tideway Tunnel) Order 2014 (AS AMENDED) SI 2014 NO. 2384

Plan referred to in General Vesting Declaration No. 42 of The Thames Water Utilities Limited (Thames Tideway Tunnel) Order 2014 (AS AMENDED) SI 2014 NO. 2384

For identification only

Document Reference  
70054885-NTC-GVD-TR1&2-GVD-0008

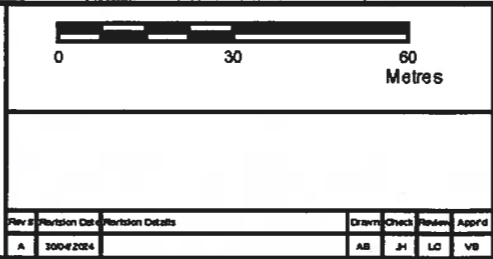
This map is reproduced from Ordnance Survey material with permission of Ordnance Survey on behalf of the Controller of Her Majesty's Stationery Office. © Crown Copyright. Unauthorised reproduction infringes Crown Copyright and may lead to prosecution or civil proceedings. 100022432 2024



2024.1789  
  
 The Common seal of Thames Water Utilities Limited was affixed in the presence of:  
  
 Authorised Signatory  
 Dated: 17 July 2024

The Common seal of Thames Water Utilities Limited was affixed in the presence of:  
  
 Authorised Signatory  
 Dated: 17 July 2024

Key  
 Permanent Acquisition of Land  
 Jacqueline Sandison  
 Senior Legal Counsel



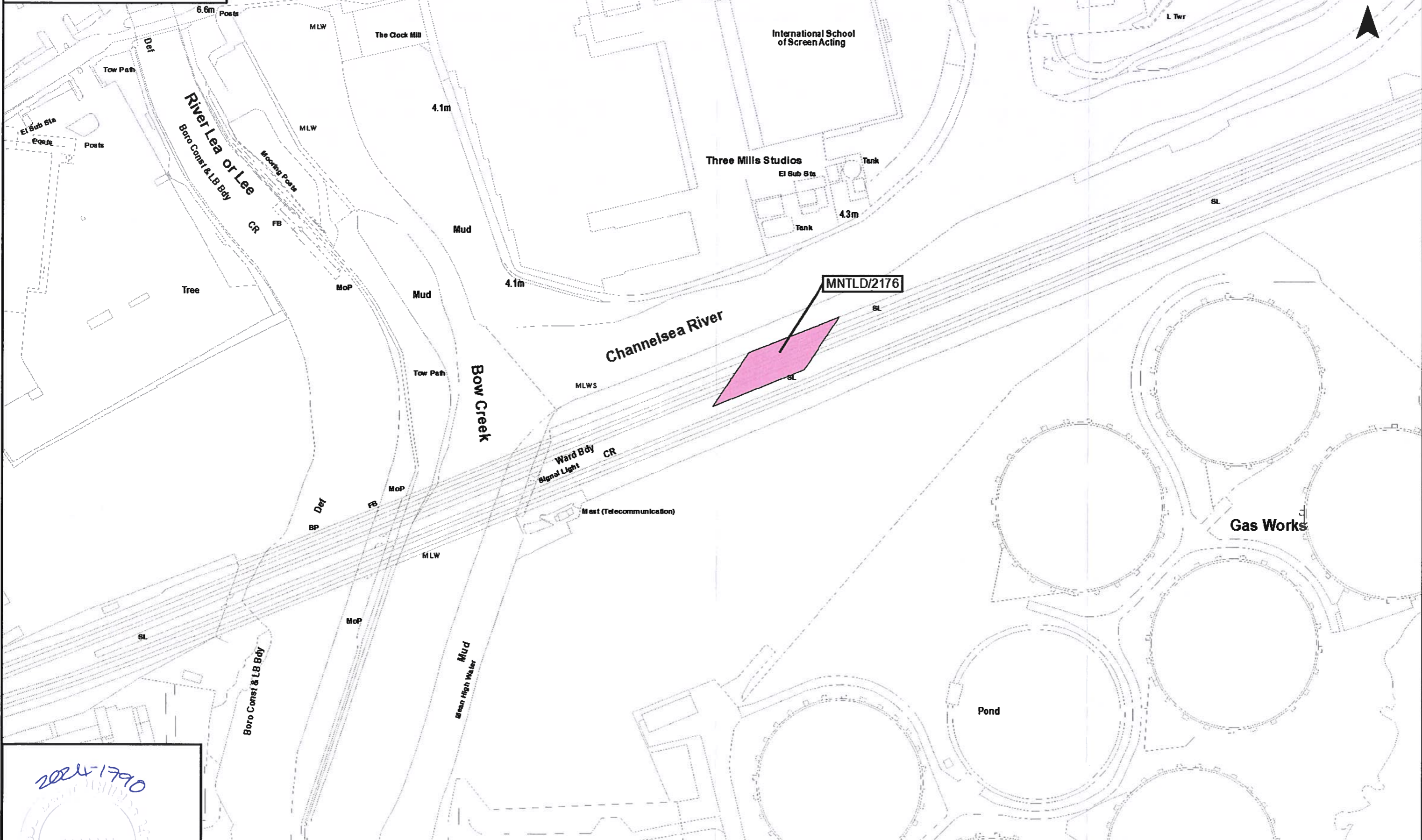
**Tideway**

Date: 30/04/2024

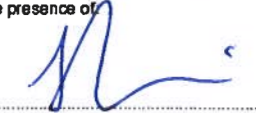
Scale at A3  
1:1,250


Job Title  
 The Thames Water Utilities Limited (Thames Tideway Tunnel) Order 2014 (AS AMENDED) SI 2014 NO. 2384  
 Drawing Title  
 Plan referred to in General Vesting Declaration No. 42 of The Thames Water Utilities Limited (Thames Tideway Tunnel) Order 2014 (AS AMENDED) SI 2014 NO. 2384  
 Status  
 For identification only  
 Document Reference  
 70054885-NTC-GVD-TR1&2-GVD-42-0009

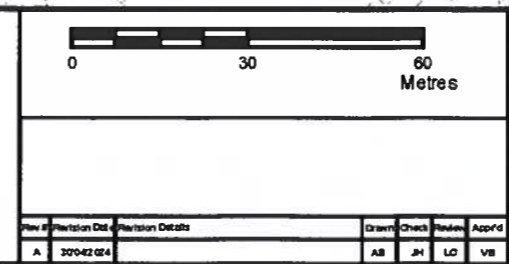
This map is reproduced from Ordnance Survey material with permission of Ordnance Survey on behalf of the Controller of Her Majesty's Stationery Office. © Crown Copyright. Unauthorised reproduction infringes Crown Copyright and may lead to prosecution or civil proceedings. 100022452 2024



2024-1790  
  
 The Common seal of Thames Water Utilities Limited was affixed in the presence of  
  
 Authorised Signatory  
 Dated: 17 July 2024

The Common seal of Thames Water Utilities Limited was affixed in the presence of  
  
 Authorised Signatory  
 Dated: 17 July 2024

Key  
 Permanent Acquisition of Land  
 Jacqueline Sandison  
 Senior Legal Counsel





Date: 30/04/2024

Job Title  
 The Thames Water Utilities Limited (Thames Tideway Tunnel) Order 2014 (AS AMENDED) SI 2014 NO.2384  
 Drawing Title  
 Plan referred to in General Vesting Declaration No. 42 of The Thames Water Utilities Limited (Thames Tideway Tunnel) Order 2014 (AS AMENDED) SI 2014 NO.2384  
 Status  
 For identification only  
 Document Reference  
 70054885-NTC-GVD-TR1&2-GVD-42-00010

Rev #	Revision Date	Revision Details	Drawn	Checked	Reviewed	App'd
A	2024-02-04		AB	JH	LD	VB