

CARNWATH ROAD RIVERSIDE

Community Liaison Working Group – Final Session

1 October 2024



Tideway





WELCOME



WORKS UPDATE

Daniel I-Webster Environment / Communications Manager

Works Update: March – September 2024



River wall works, removing piles and installing timber ecological enhancements.
Due for full completion by: Oct 2024



Artwork installation on kiosk: July 2024

Works Update: March – September 2024



Public realm and Thames Path paving installation to Riverwall 923: September 2024



Public realm installation of street furniture, lampposts, landscaping and kiosk.

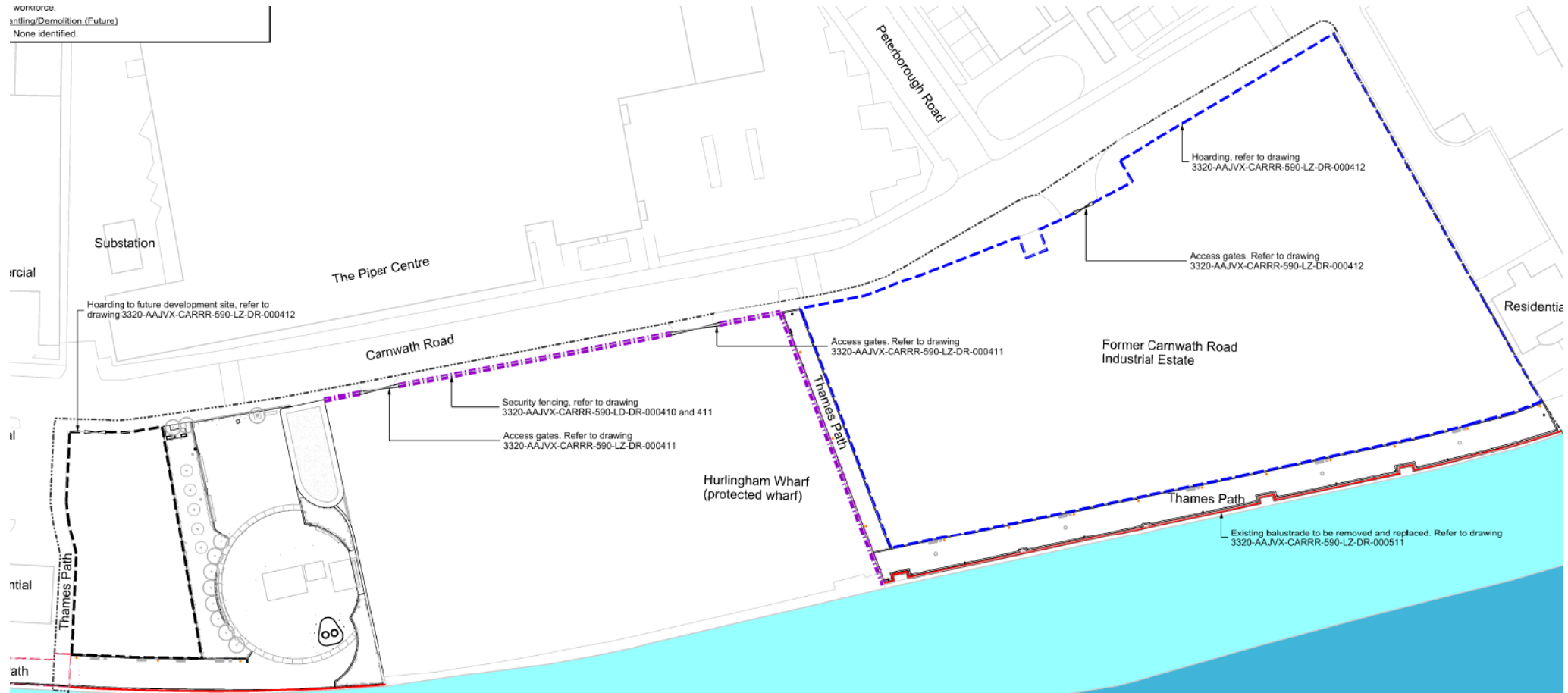
Key dates works continuing from October 2024 – end of 2024

- Riverwall works
- Removal of sheet piles
- Regrading of foreshore
- Levelling of public realm space and install lampposts to Thames Path
- Thames path riverwalk installation
- Permanent fencing and hoarding
- Mechanical and electrical works on-going
- Installation of equipment and cabling works across site
- System testing and commissioning continues until 2025

Site Layout



Hoarding and Fencing



Purple, is mesh security fencing to installed to Hurlingham wharf (protected wharf).
Blue and black dashed lines are 2.4m timber hoarding around future development areas / former industrial estate.

Remaining Works: October 2024 onwards



Note – Temporary Hoarding NOT Shown

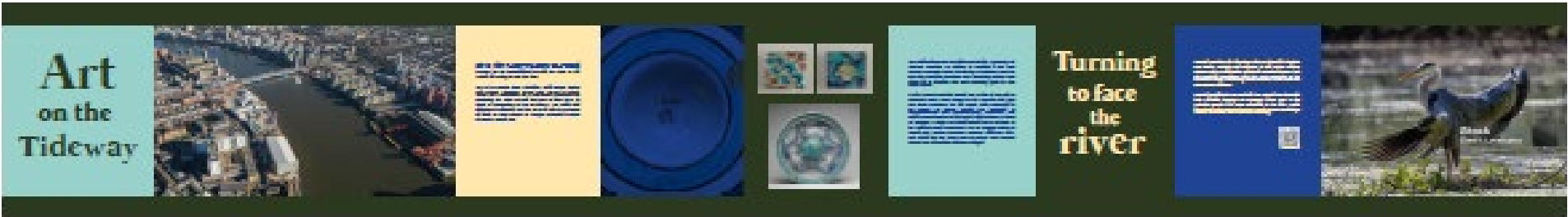
Completion of Public Realm Landscaping Works and install permanent hoarding.
Removal of hardstanding, river sheet piles and temporary works



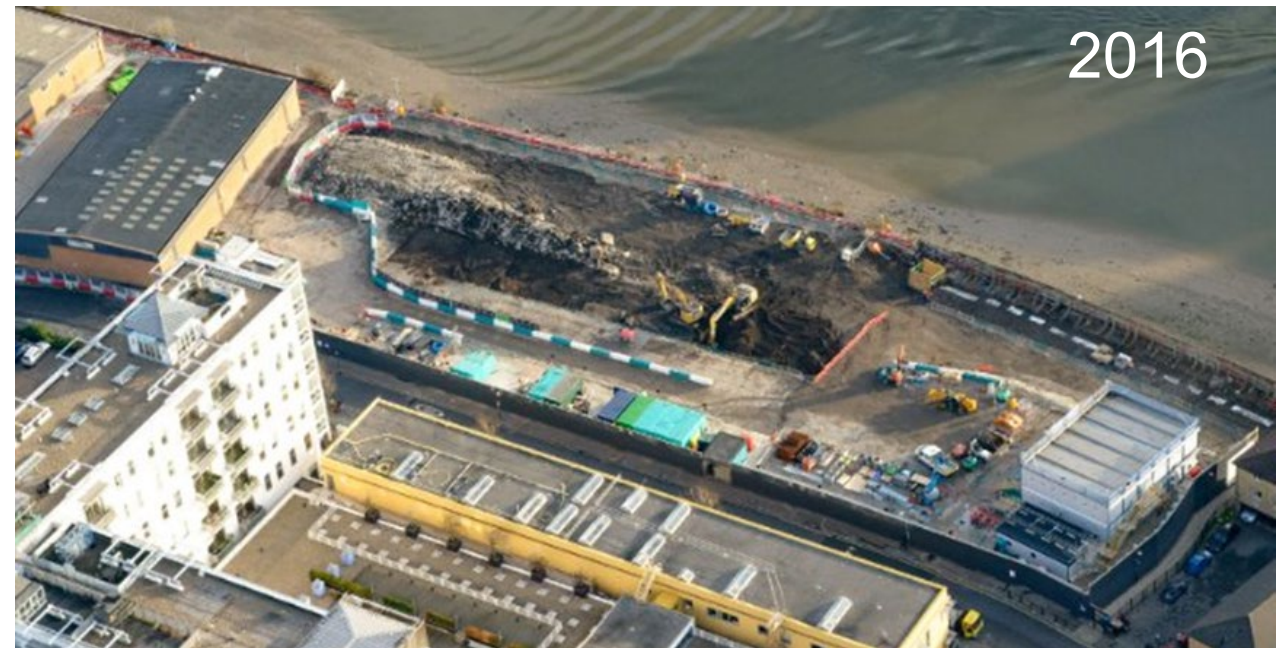
Note – Temporary Hoarding NOT Shown

Architectural and Landscaping Works
Hard and soft landscaping works

Whiffin Wharf Hoarding - design example



Journey of the CARRR Site



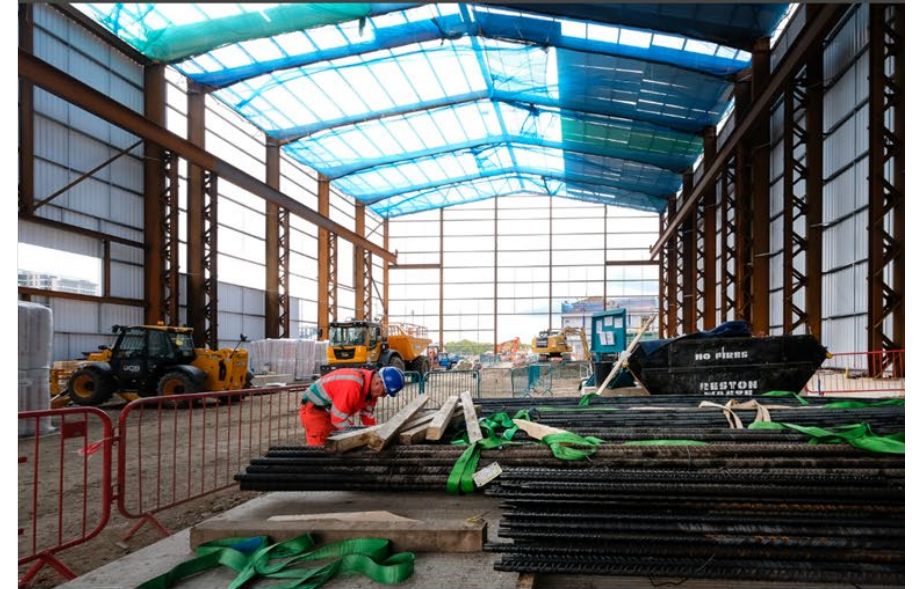
Journey of the CARRR Site



CARRR Site photos 2024



Acoustic Shed



The Shaft



Breakthrough at Acton



Tunnel Boring Machine (TBM)



The Tunnel



Surface works





COMMUNITY ENGAGEMENT

Daniel I-Webster Environment / Communications Manager

Community Investment Highlights



TWUL Carnwath Road Land Update

Land Update

An update was provided earlier on this year at the previous CLWG, and nothing has changed since. Summary below:

- Whiffin Wharf - The area of Whiffin Wharf, containing the Tideway shaft and ventilation plant, is owned by Thames Water, and will be opened as Public Realm by Summer 2025. The remaining non-public realm area of Whiffin Wharf is currently under review to confirm what (if any) areas are needed for the long-term maintenance activities of the Tideway Tunnel, any land surplus to these maintenance requirements may be disposed of by Thames Water.
- Hurlingham Wharf – This land is currently being leased to Thames Water and will be handed back at the end of the project.
- Carnwath Road Industrial Estate - Carnwath Industrial Estate is currently owned by Thames Water, having been acquired to facilitate the construction of the Thames Tideway Tunnel. In terms of the land, Tideway is required to hand the site back to Thames Water upon completion of the works and has no control over its sale or future development plans. Thames Water will dispose of this surplus land in due course and post hand back by Tideway.
- Once decisions have been finalised and information is publicly accessible there will be no issue in sharing.

CARRR Site Handback Areas



Key

H2 Handback Areas

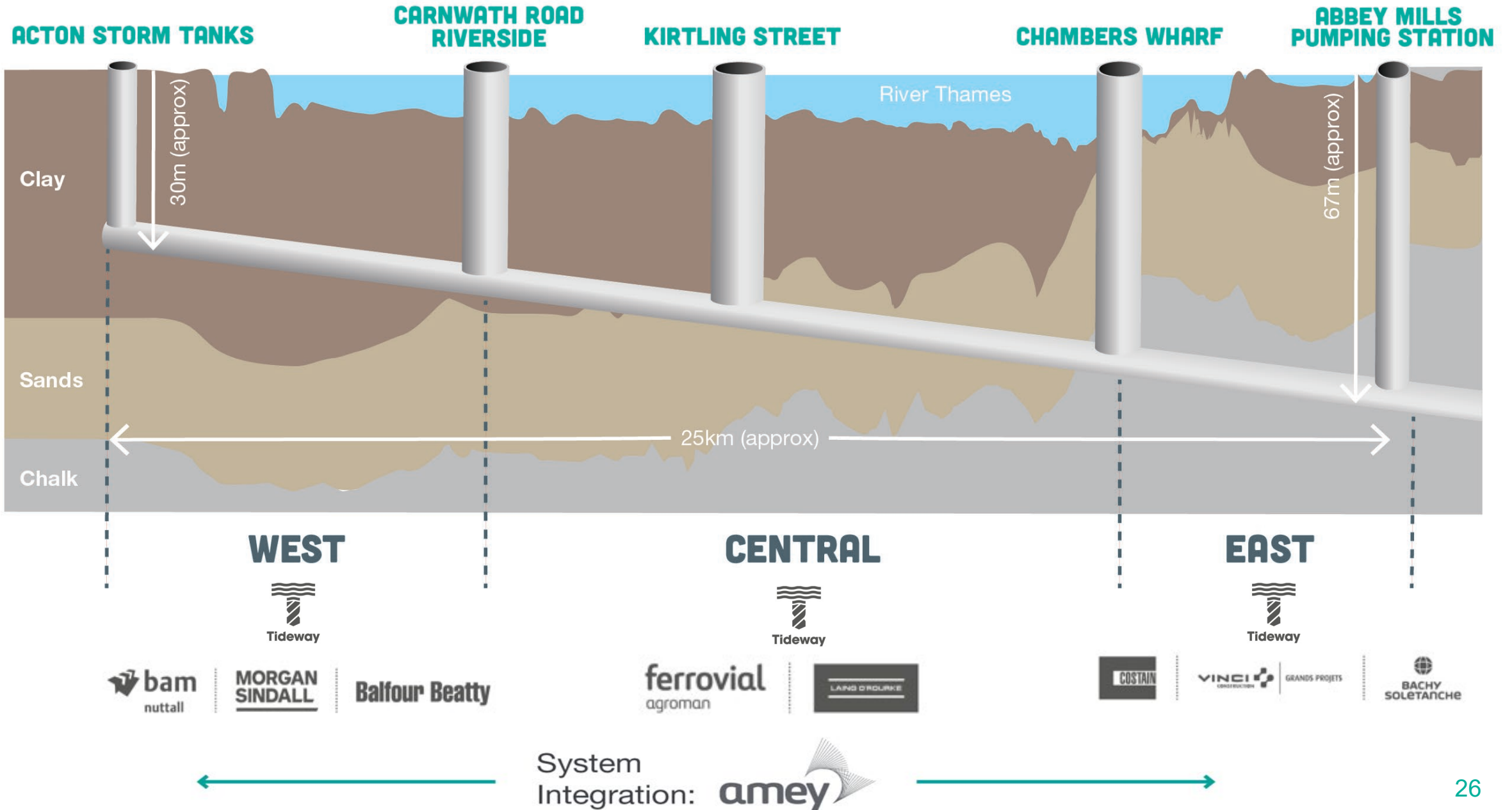
- H201 Whiffin Wharf (retained by TWUL (Artist impression below))
- H202 Hurlingham Wharf
- H203 Carnwath Road Industrial Estate
- H204 Whiffin Wharf (Artist impression below)
- H205 Carnwath Road Foreshore



TIDEWAY UPDATE

Georgia Boyd, Engagement Manager

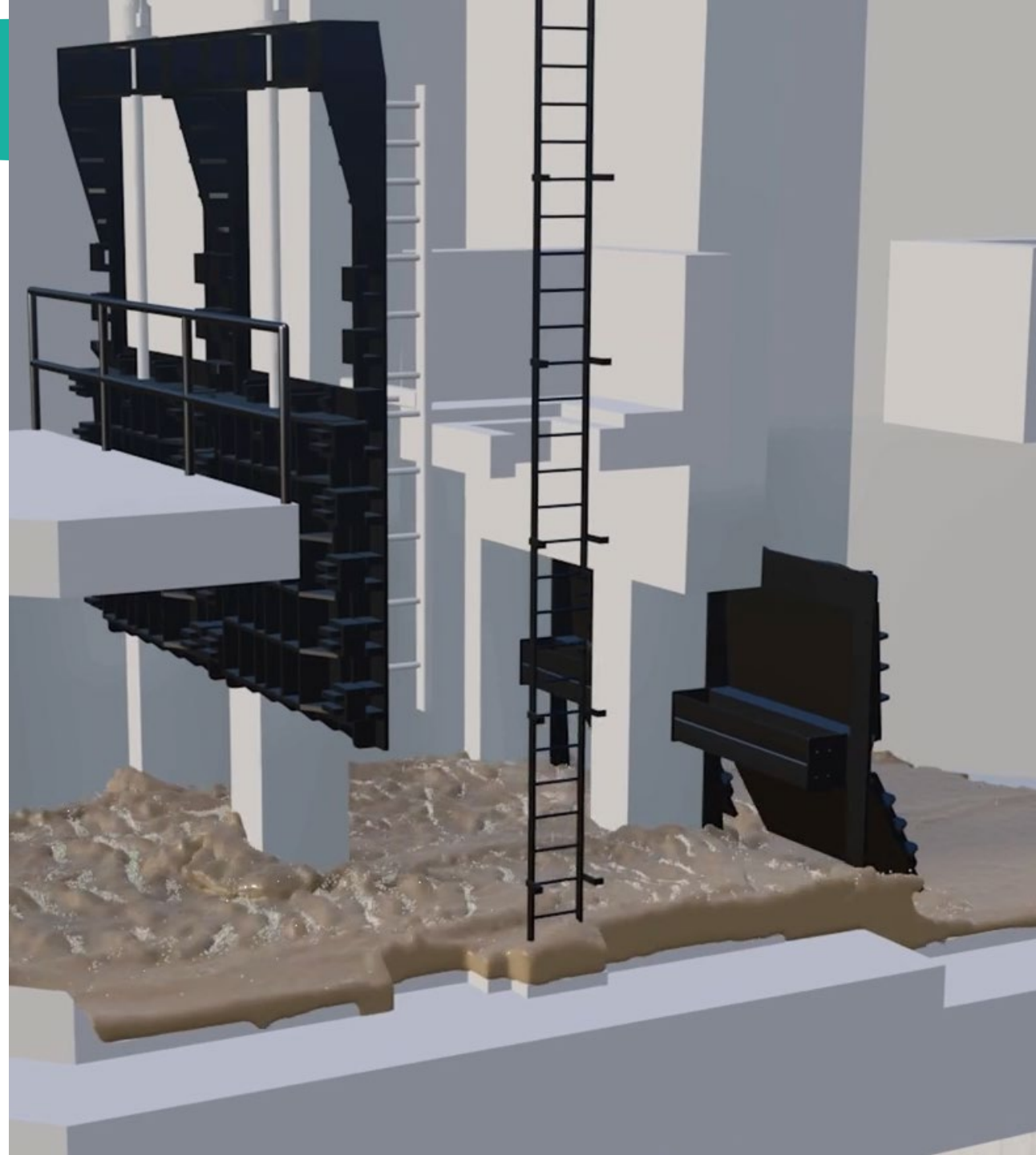
Tunnelling through London



Project overview

- We are starting to clean up the river!

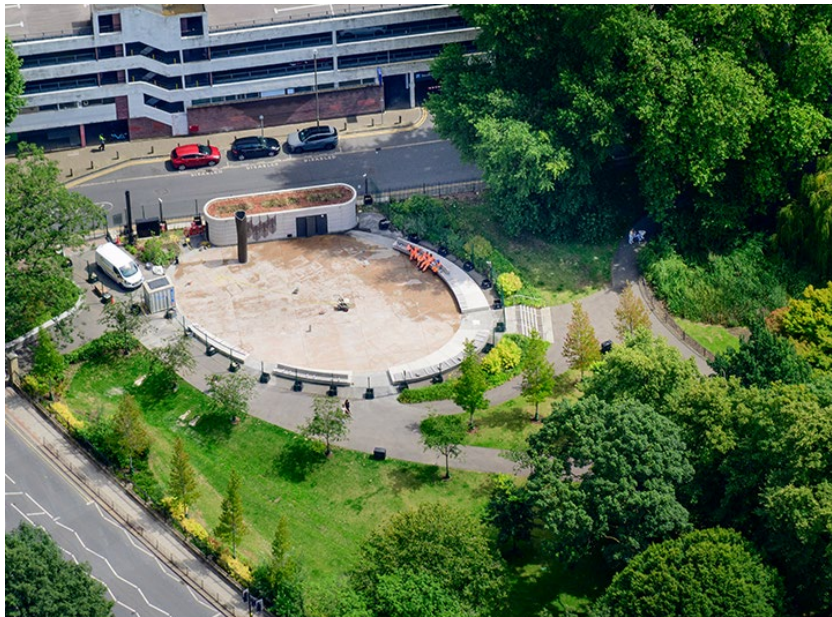
CSO points along the route have been connected to the tunnel and are now taking flows at:
 - ✓ Barn Elms
 - ✓ King George's Park
 - ✓ Dormay Street
- Next steps is to set a target date to start storm testing
- West highlight - permanent artworks all installed
- Opening of the public space in King George's park



Sites activated to date



BARN ELMS

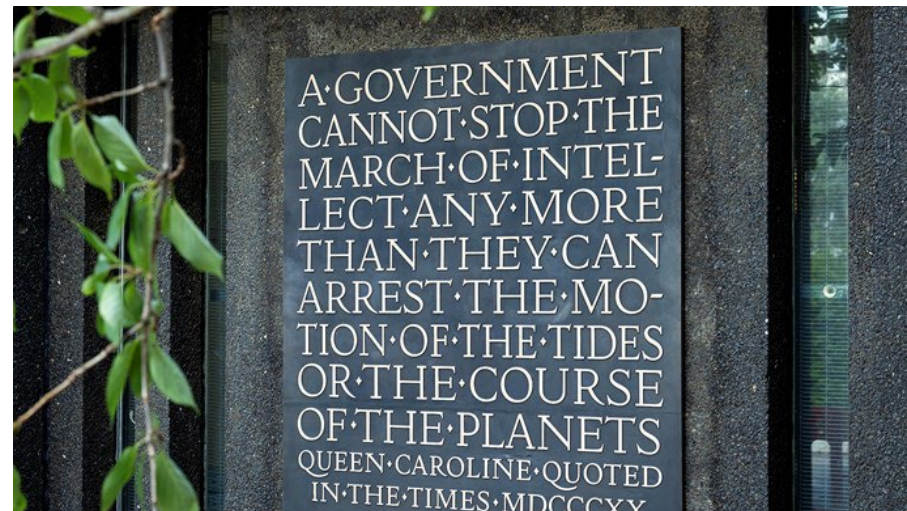


KING GEORGE'S PARK



DORMAY STREET

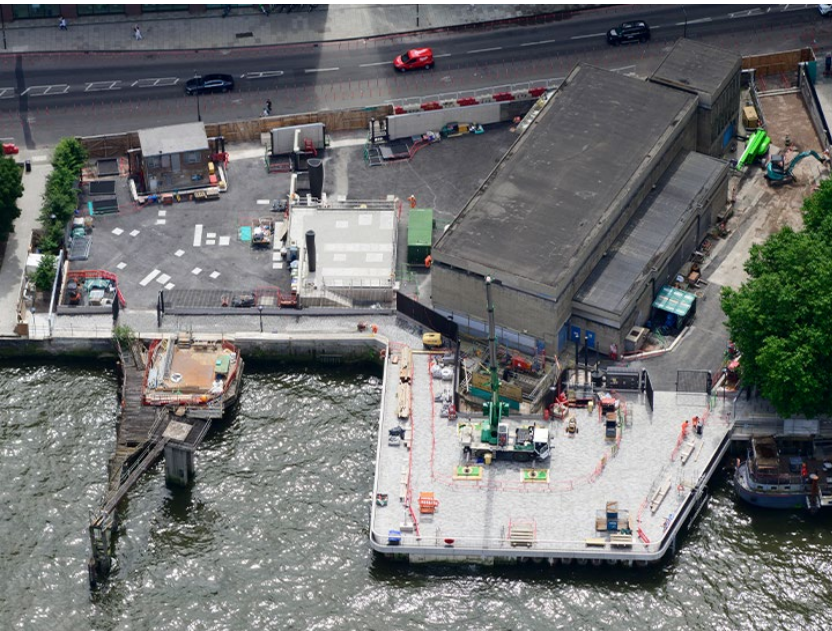
West – all artworks installed



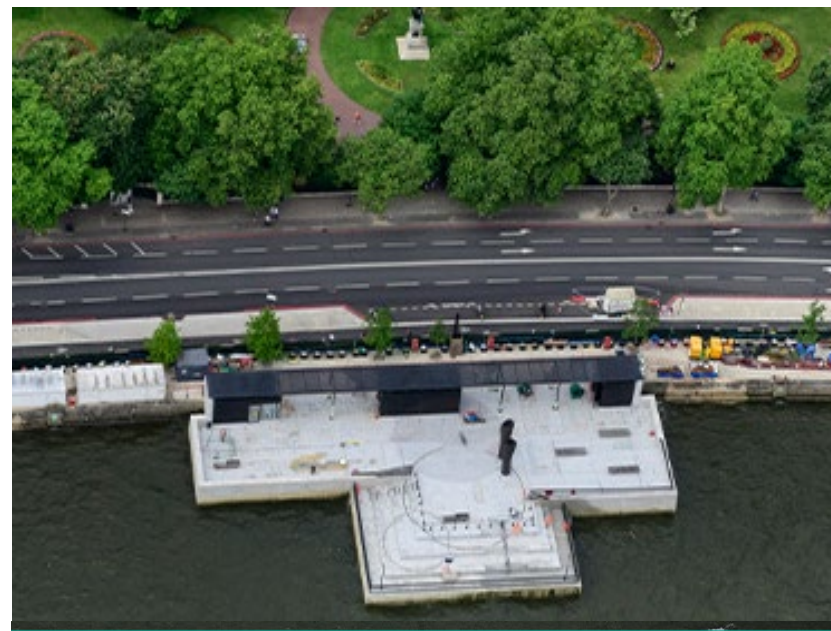
King George's Park Public space opened



Central – public realm progress



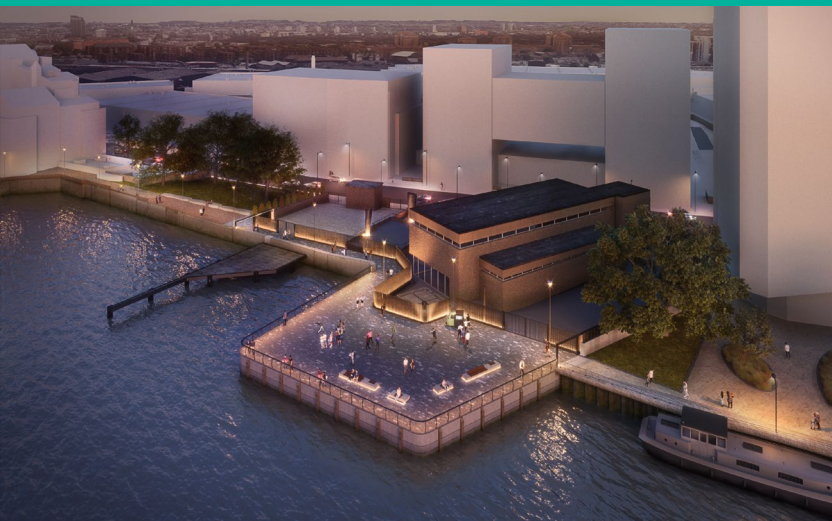
HEATHWALL PUMPING STATION



VICTORIA EMBANKMENT



FALCONBROOK PUMPING STATION



East public realm progress



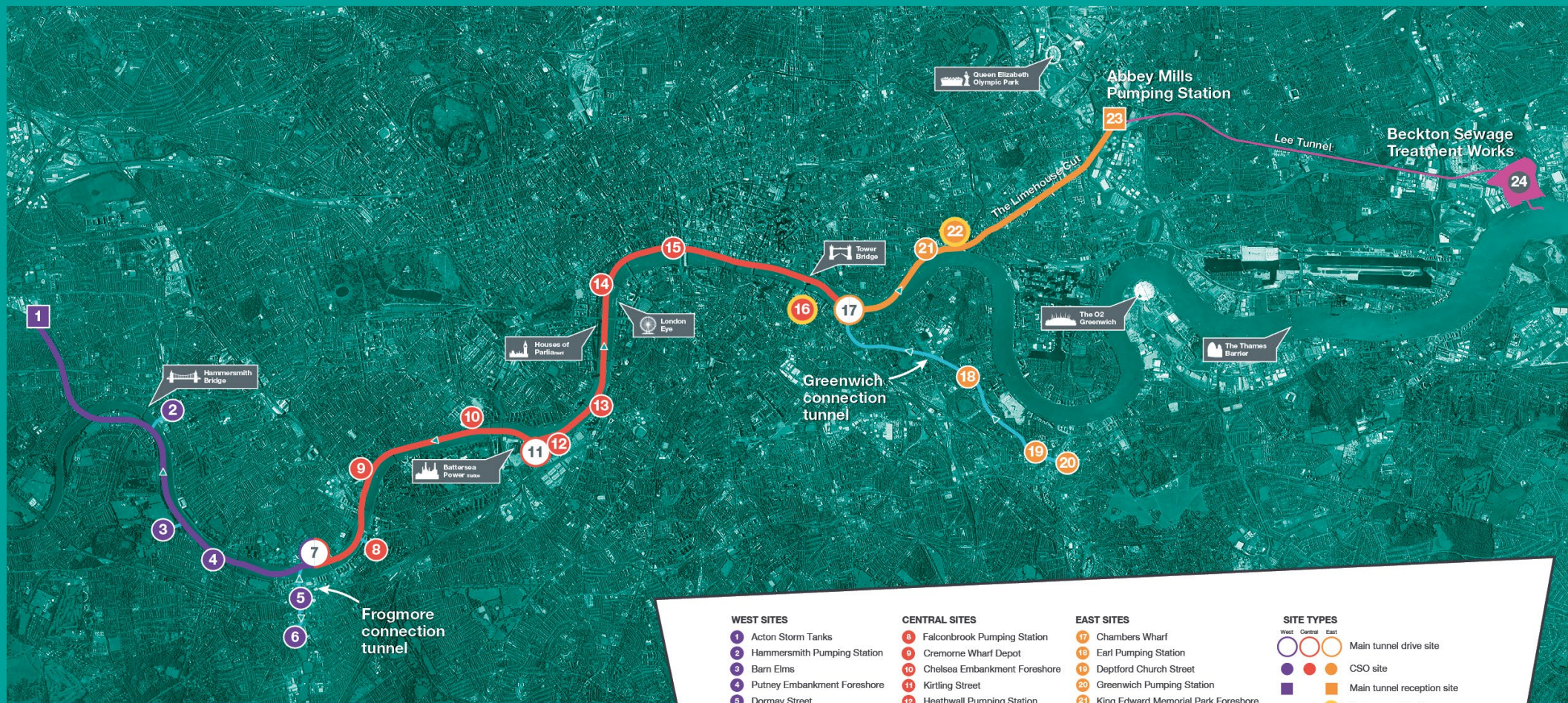
KING EDWARD MEMORIAL PARK



DEPTFORD CHURCH STREET



Tideway Tunnel Overview



TIDEWAY ROUTE MAP

WEST SITES

- 1 Acton Storm Tanks
- 2 Hammersmith Pumping Station
- 3 Barn Elms
- 4 Putney Embankment Foreshore
- 5 Dormay Street
- 6 King George's Park
- 7 Carnwath Road Riverside

CENTRAL SITES

- 8 Falconbrook Pumping Station
- 9 Cremorne Wharf Depot
- 10 Chelsea Embankment Foreshore
- 11 Kirtling Street
- 12 Heathwall Pumping Station
- 13 Albert Embankment Foreshore
- 14 Victoria Embankment Foreshore
- 15 Blackfriars Bridge Foreshore
- 16 Shad Thames Pumping Station

EAST SITES

- 17 Chambers Wharf
- 18 Earl Pumping Station
- 19 Deptford Church Street
- 20 Greenwich Pumping Station
- 21 King Edward Memorial Park Foreshore
- 22 Bekesbourne Street
- 23 Abbey Mills Pumping Station
- 24 Beckton Sewage Treatment Works

SITE TYPES

- West Central East
- Main tunnel drive site
- CSO site
- Main tunnel reception site
- System modifications
- Main tunnel (West)
- Main tunnel (Central)
- Main tunnel (East)
- Connection tunnels
- Lee Tunnel
- Proposed drive direction

25 kilometres long

Travelling from west to east London, the main tunnel will be 25km long. Two connection tunnels will be 4.6km and 1.1km long.

7.2 metres wide

The main tunnel will have an internal diameter of 6.5 metres between Acton Storm Tanks and Carnwath Road Riverside. It will have a 7.2 metre internal diameter at Abbey Mills Pumping Station. The Greenwich connection tunnel will have a 5 metre internal diameter and Frogmore connection tunnel will be 2.6 metres.

66 metres deep

The tunnel needs to fall one metre every 790 metres so it can be self-cleaning. Starting from 30 metres deep at Acton Storm Tanks, it will finish 66 metres deep at Abbey Mills Pumping Station.

Stay up to date

Website

www.tideway.london

Quarterly Newsletter

[@TidewayLondon](https://www.instagram.com/TidewayLondon)



Follow us on our social media platforms:



[Twitter / X](#)



[Facebook](#)



[Instagram](#)



[LinkedIn](#)



[YouTube](#)

How To Make A Claim if Affected By Tideway's Work

Who do I go to for advice?

Independent Advisory Service (IAS) Helpline for independent advice:

- 0800 917 8845 or info@tidewayias.co.uk
- For assistance and advice please contact the Tideway Helpdesk
 - Helpdesk: 08000 30 80 80 or
 - helpdesk@tideway.london

How do I submit my claim?

Please submit your claim direct to the ICP: admin@tidewayicp.london

The IAS can send you a claim form, or you can download the form off the Tideway website: www.tideway.london/help-advice/compensation-information/Independent-Compensation-Panel

THANK YOU!



for your patience, support and
understanding over the years.



Tideway

RECONNECTING LONDON WITH THE RIVER THAMES

#SuperSewer

www.tideway.london