

King Edward Memorial Park Foreshore

Community Liaison Working Group
21 October 2024



Tideway



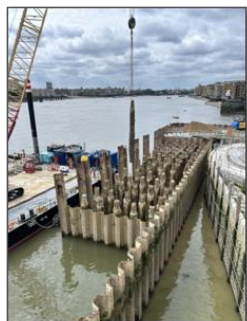
Site aerial view (July 2024)



Tideway



Progress on site in 2024



Upcoming works



Cofferdam removal including scour installation

- Cofferdam removal will be complete by the end of November 2024
- Scour installation works will be complete by March 2025

Architecture and Landscaping

- Soft and hard landscaping works are ongoing and are expected to be complete by March 2025
- Intertidal terraces are currently being installed with planting expected to be undertaken in April/May 2025

Completion

- Physical works are expected to be completed by March 2025 including demobilisation from the Multi Use Games Area (MUGA)

Opening to the public

- Thames Path (summer 2025)
- King Edward Memorial Park tideway site area (summer 2025)

Programme 2024 / 2025



Key Activity	Oct 2024	Nov 2024	Dec 2024	Jan 2025	Feb 2025	Mar 2025	Apr 2025	May 2025	Jun 2025
Cofferdam removal									
Scour installation									
Architecture & landscaping									
Site demobilisation									
Commissioning									

Note:
Light teal indicates minor works

Foreshore structure (indicative illustration)



Foreshore structure (indicative illustration)



Electrical and mechanical kiosk (indicative illustration)



Tideway



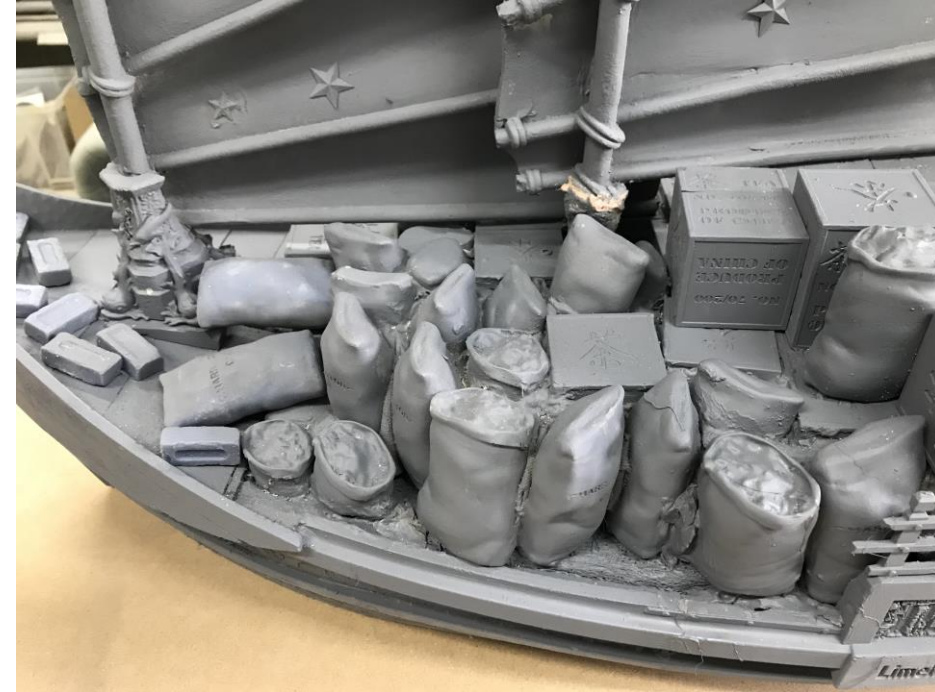
Cargoes by Hew Locke

As part of the project, a public art programme was implemented to deliver the Heritage Interpretation Strategy.

Here, a series of unique cast bronze boats, including a tug, Chinese junk, flat barge, Carrack, Thames sailing barge and Bangladesh river boat, symbolise the history of the Thames and the shifting population of the East End.

In many cultures, ships are symbolic of a person's passage through life and are considered a container of the soul.

A legion of histories is suggested by the specific ships, their decorative details and cargo.



The sculptures

The sculptures have now all been cast, which is a lengthy process involving a number of stages to create 'patterns' from which the moulds are made of sections of the sculptures, then molten bronze poured in, allowed to cool and then finished.



The sculptures

The finishing is an intricate process of welding sections of the sculptures together and then removing all traces of the welds and reinstating the decoration and ensuring that all of the decorative details are clear.

The sculptures will be installed as part of the last element of the landscaping, and the artist will give local residents a private tour.



Environment: noise and air quality

Section 61 Overview



Working Hours

KEY:

Standard Hours	= Mon-Fri 8am – 6pm & Sat 8am – 1pm
Extended Hours	= Mon-Fri 5am – 8am & 6pm – 10pm, Sat 5am - 8pm & 1pm – 6pm
Continuous Hours	= 24/7
Mobilisation / Demob Hours	= Standard hours 7am – 8am & 6pm – 7pm, Extended hours 4:30am – 5am & 10pm – 10.30pm
Maintenance Hours	= Sat 8am – 5pm, Sun 10am – 4pm

- General site activity - allowed Sat 1pm – 6pm
- Cofferdam removal - excavating and breaking
- Mechanical, electrical, instrumentation, control and automation works (MEICA)
- Barge loading/unloading
- Scour protection installation
- Rip-rap installation
- Marine intertidal terrace works
- Cofferdam removal – use of long reach and crane
- Architecture and Landscaping – including NESR roof. Allowed Sat 1pm – 6pm
- Dewatering
- Briefings, inspections, safety plant start- up checks, site cleaning, concrete wagons arriving for testing.
- Plant maintenance: installation and maintenance of services

Section 61 Exceedances

Noise

May 24 to date:

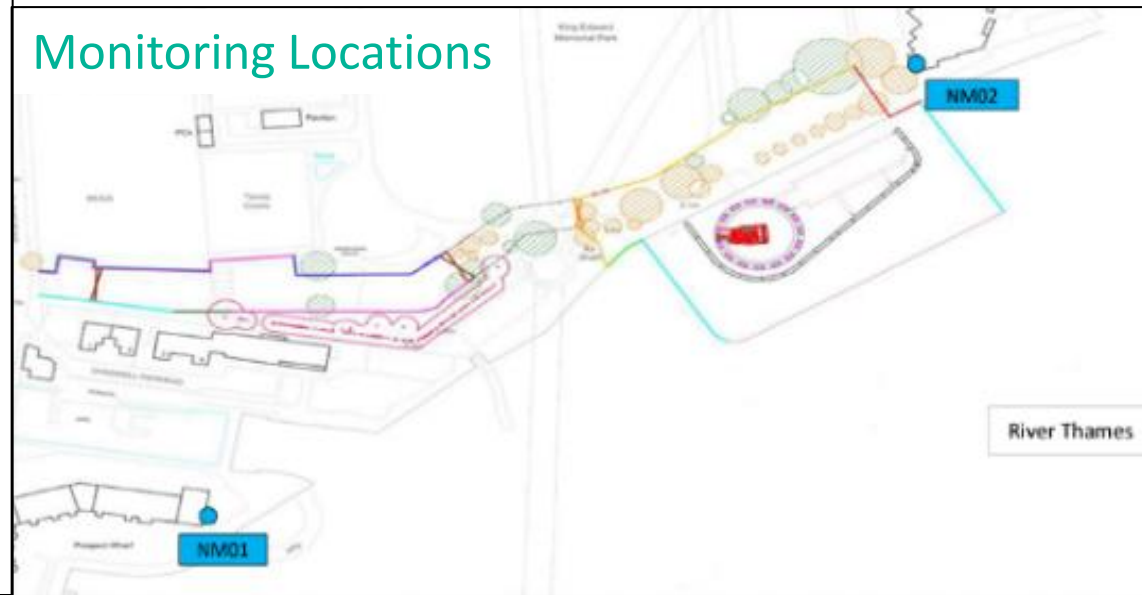
0 out of 40 allowed TAP exceedances during any 6-month period

Air

May 24 to date:

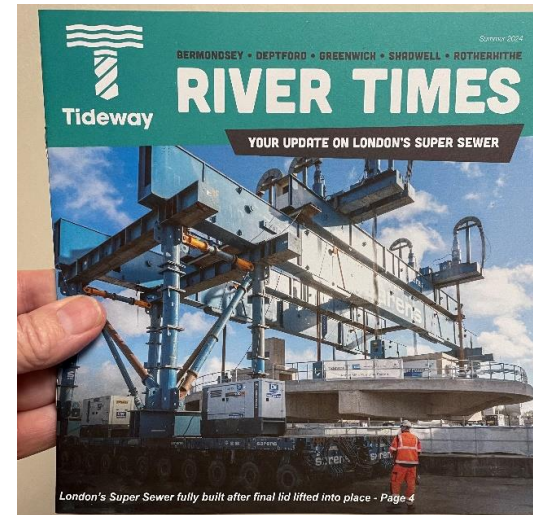
3 alerts on 29/06 due to hot weather and light winds on site

Monitoring Locations



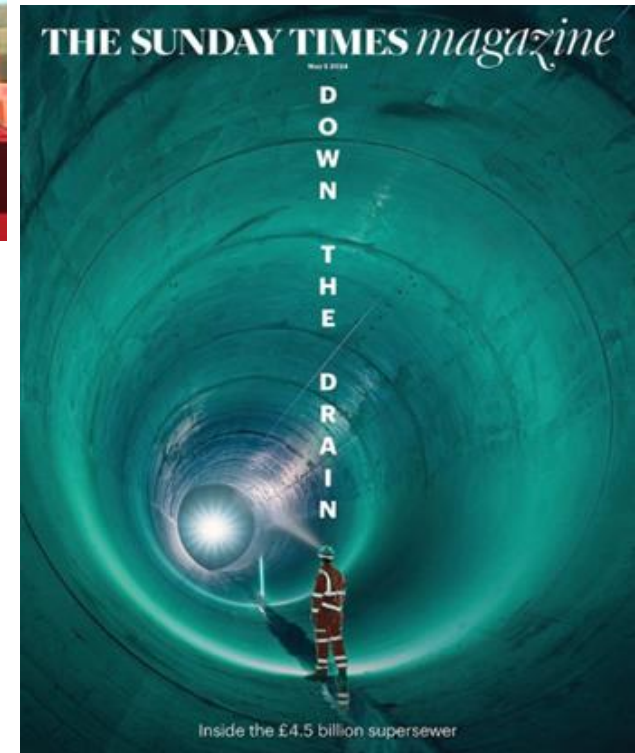
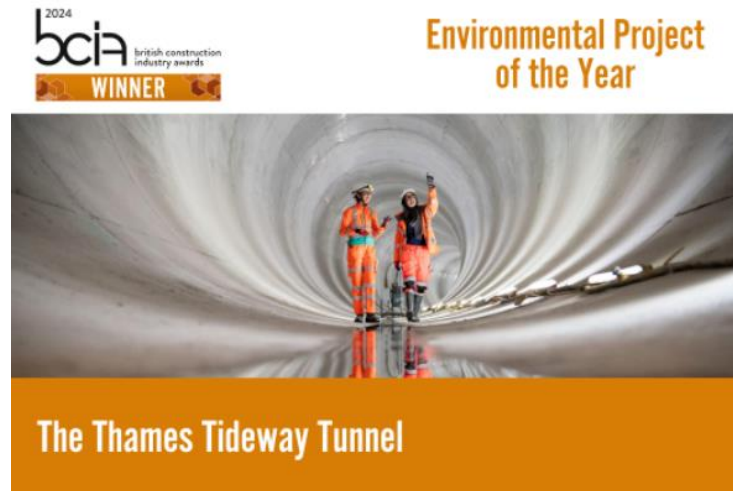
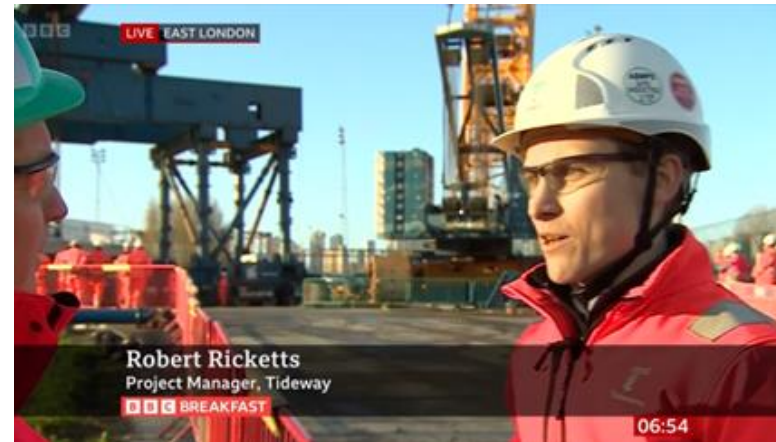
Community investment highlights

- River Times distributed to circa 16,000 households around the east sites
- King Edward Memorial Park Foreshore site liaising with neighbouring Shadwell Basin Centre to reuse equipment
- CVB PPE donation to Constructionarium in Norfolk
- Work experience: 14 students hosted this year by the east team
- London Design & Engineering University Technical College careers day & student mentoring supported
- Boat trip with Harris Academy students to showcase sustainability job opportunities
- Visited Bounceback charity for employing ex-offenders visit at HMP Brixton
- Thames 21 wet wipe count supported at Hammersmith



Highlights from the wider project

- Widespread media coverage as we put the final lid on the super sewer and started testing the system
- British Construction Industry Awards: Tideway wins include environmental project of the year and project of the year
- Better Society awards – Tideway Highly Commended
- Tideway Sustainability Report published
- Social Value Forum held with Tideway and other major projects
- International Women's Day panel held at our Chambers Wharf site



Tideway's eastern section (July 2024)



PROJECT OVERVIEW



 BMB WEST	 FLO CENTRAL	 CVB EAST	  <div> <div>16</div> Shad Thames Pumping Station <div>22</div> Bekesbourne Street <div>24</div> Beckton Sewage Treatment Works </div>
<div>1</div> Acton Storm Tanks	<div>8</div> Falconbrook Pumping Station	<div>17</div> Chambers Wharf	MAP KEY <div> <div>●</div> Main tunnel drive tunnel site <div>■</div> Main tunnel </div> <div> <div>●</div> Main tunnel reception site <div>⋯</div> Connection Tunnels </div> <div> <div>●</div> CSO site <div>—</div> Lee Tunnel </div> <div> <div>●</div> Short connection tunnel drive site <div>↔</div> Proposed drive direction </div> <div> <div>●</div> Long connection tunnel drive site <div>⋯</div> West works site </div> <div> <div>○</div> System modifications <div>⋯</div> Central works sites </div> <div> <div>⋯</div> East works site </div>
<div>2</div> Hammersmith Pumping Station	<div>9</div> Cremorne Wharf Depot	<div>18</div> Earl Pumping Station	
<div>3</div> Barn Elms	<div>10</div> Chelsea Embankment Foreshore	<div>19</div> Deptford Church Street	
<div>4</div> Putney Embankment Foreshore	<div>11</div> Kirtling Street	<div>20</div> Greenwich Pumping Station	
<div>5</div> Dormay Street	<div>12</div> Heathwall Pumping Station	<div>21</div> King Edward Memorial Park Foreshore	
<div>6</div> King George's Park	<div>13</div> Albert Embankment Foreshore	<div>23</div> Abbey Mills Pumping Station	
<div>7</div> Carnwath Road Riverside	<div>14</div> Victoria Embankment Foreshore		
	<div>15</div> Blackfriars Bridge Foreshore		

Tunnel complete & connecting up

- Final major construction work complete underground, and we are now starting to clean up the river!
 - ✓ First 4 of 21 sites switched on, with new tunnel starting to protect River Thames from sewage pollution for the first time
 - ✓ First data records half a million cubic metres of sewage captured by the tunnel network in 24-hour period (23 Sept)
 - ✓ Teams now working to bring system into full operation
 - ✓ Project on track for completion in 2025
- Picture left right - Abbey Mills shaft cover slab lifted and moved into position, effectively sealing the tunnel
- Picture bottom right - Wall between Lee Tunnel and Tideway Tunnel removed creating one continuous 25km tunnel
- October 2024 press release



Stay up to date with Tideway

Call us on 08000 30 80 80

Email us at helpdesk@tideway.london

Follow us on our social media platforms:



[Twitter / X](#)



[Facebook](#)



[Instagram](#)



[LinkedIn](#)



[YouTube](#)

How to make an application for additional mitigation



Who do I go to for advice?

For personal assistance contact our Helpdesk: 08000 30 80 80 or helpdesk@tideway.london

For independent advice contact Independent Advisory Service (IAS) Helpline:
0800 917 8845 or info@tidewayias.co.uk

How do I submit my Independent Compensation Panel form?

The Helpdesk can submit your form to the Independent Compensation Panel (ICP) on your behalf, or you can submit your claim direct to the ICP: admin@tidewayicp.london

You can download a claim form from the Tideway website:

www.tideway.london/help-advice/compensation-information/Independent-Compensation-Panel





Tideway

RECONNECTING LONDON WITH THE RIVER THAMES

#SuperSewer

www.tideway.london