

# WEEKLY SITE UPDATE

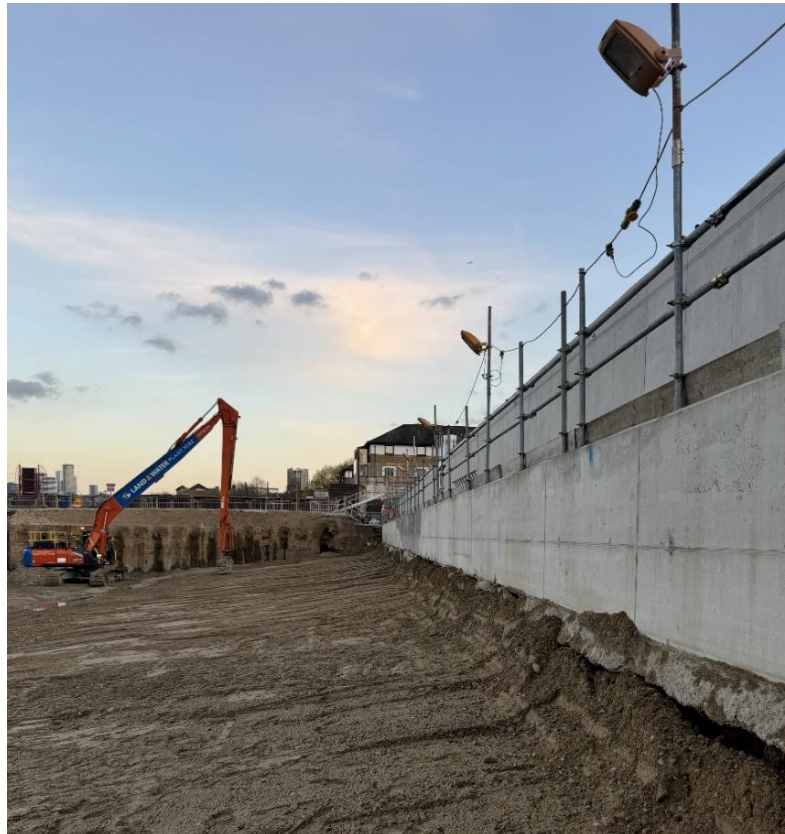


29 November 2024

## THIS WEEK

The site team has been:

- Breaking out the concrete platform, using large excavators, while we are removing the cofferdam
- Removing cofferdam fill material and stockpiling it, with excavators, to then be removed by barge
- Working on the foreshore for access to the existing jetty and undertaking preparation works
- Exposing the old concrete jetty piles and continuing with their removal
- Installing formwork and steel for the new Luna House jetty slab
- Continuing drainage and ducting work, including using an excavator for concrete breaking
- Continuing kiosk MEICA works (Mechanical, Electrical, Instrumentation, Control and Automation)
- Constructing the surface drainage plus undertaking architecture and landscape works, behind the kiosk
- Continuing street works at Loftie Street for the new road layout and entrance to Thames Water area. This includes installing services in the road, removing the existing road and footpath, preparing the area for permanent works and relocating the lightpost. Loftie St. vehicle access is for residents only



*Cofferdam removal progress, looking east*

## THIS WEEKEND

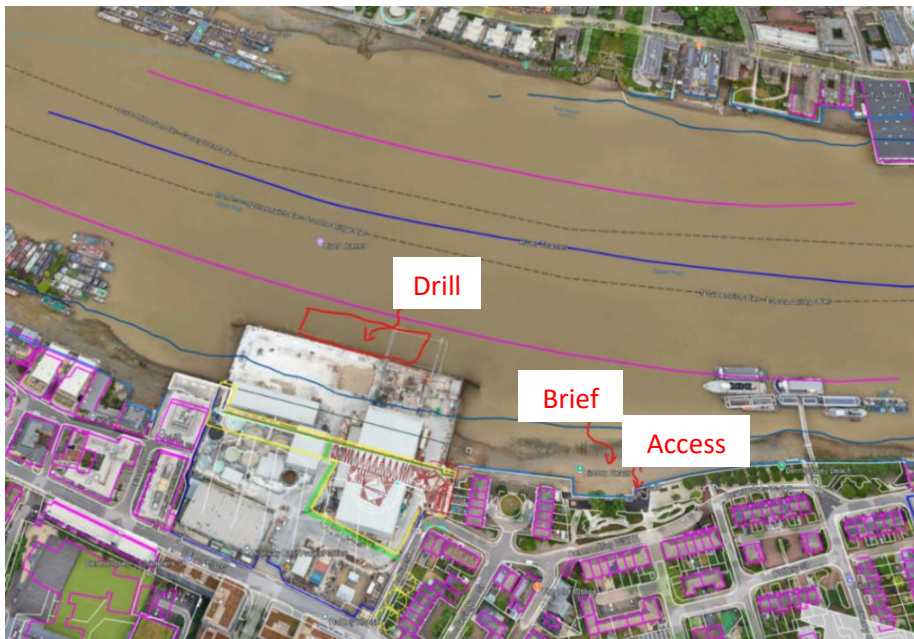
We are planning to continue working in the cofferdam area plus we will be installing formwork and steel for the new Luna House river walls.

The 24 hour, site-based, security team will be on regular patrol, while site staff will conduct periodic inspections of safety and monitoring equipment.

## NEXT WEEK & LOOKAHEAD

The site team will be:

- Breaking concrete, installing formwork and steel, then pouring the new Luna House river walls
- Working on the foreshore for access to the existing jetty and the underside of the concrete works
- Continuing drainage and ducting work, including the use of an excavator for concrete breaking
- Breaking out the concrete platform, using large excavators, while we are removing the cofferdam
- Removing the cofferdam fill material and stockpiling it with excavators, to be removed by barge
- Exposing the old concrete jetty piles and continuing with their removal
- Removing redundant steel tie rods in the cofferdam, using thermal cutting equipment
- Constructing surface drainage and continuing architecture and landscape works behind the kiosk
- Continuing kiosk MEICA works (Mechanical, Electrical, Instrumentation, Control and Automation)
- Continuing street works at Loftie Street for the new road layout and entrance into Thames Water area. This includes installing a new kerb, surface drains, concrete bollards and paving stones plus relocation of existing hoarding. Vehicle access through Loftie Street is limited to residents
- On Thursday morning, the Royal National Lifeboat Institution (RNLI) will be running an emergency drill – originally planned a couple of weeks ago - for site staff, who will be on the edge of the cofferdam and then the foreshore east of Chambers Wharf. Lifeboat volunteers will enact a ‘Man Overboard’ rescue drill, to highlight the dangers of working by the Thames, as well as showing the capabilities of the fourth emergency service, locally based on the Thames at the busiest lifeboat station in the country



## COFFERDAM REMOVAL

For more information about cofferdam removal, see the separate information sheet [here](#).

## WORKING HOURS

Standard working hours are:

- Monday to Friday: 8am to 6pm
- Saturday: 8am to 1pm

Concrete breaking activities will only be:

- Monday to Friday: 8am to 6pm
- Saturday: 9am to 2pm (starting and finishing an hour later than standard hours)
- We will endeavour to finish all works onsite by 6pm, but other support activities, such as moving materials and pouring concrete, may continue until 8 pm
- Certain activities for the cofferdam removal such as barge movements, and the Luna House, are dependent on the tide and may take place 5am to 10pm

## COMMUNITY ENHANCEMENT FUND

Under the project's Section 106 agreement, a Community Enhancement Fund of £1 million was allocated for community-led projects to improve the area around our Chambers Wharf site. Just over £30,000 remains.

If you have a community idea and wish to apply for some of the remaining money, or are interested in joining the panel of local representatives, please email Jacqueline Christie, at Southwark Council:

[Community.Engagement@southwark.gov.uk](mailto:Community.Engagement@southwark.gov.uk). Further information and details on how to apply are available on Southwark Council's [webpage](#).

## INDEPENDENT COMPENSATION PANEL

If you feel affected by our work, please continue to contact the Helpdesk, who can advise you on support available through the Independent Compensation Panel. Typical mitigation could include daily respite, alternative office accommodation, installation of secondary glazing, blackout blinds or noise cancelling headphones. If you would like to make an application to the Independent Compensation Panel (ICP), please contact the Helpdesk at [helpdesk@tideway.london](mailto:helpdesk@tideway.london) to request a copy of the form.

## CONTACT DETAILS

If you have any questions, contact the Tideway Helpdesk on 08000 30 80 80 or at [helpdesk@tideway.london](mailto:helpdesk@tideway.london).

Jacqueline Christie, Consultation and Involvement Officer for Southwark Council, can be contacted for Tideway enquiries at: [Community.Engagement@southwark.gov.uk](mailto:Community.Engagement@southwark.gov.uk).

The Southwark Council Environmental Health team can also be contacted directly if you have concerns about our work - [environment@southwark.gov.uk](mailto:environment@southwark.gov.uk).