

# CHAMBERS WHARF – COMMUNITY LIAISON WORKING GROUP

Tuesday 11 February 2025

Chair – Patricia Brown



Tideway



# Agenda

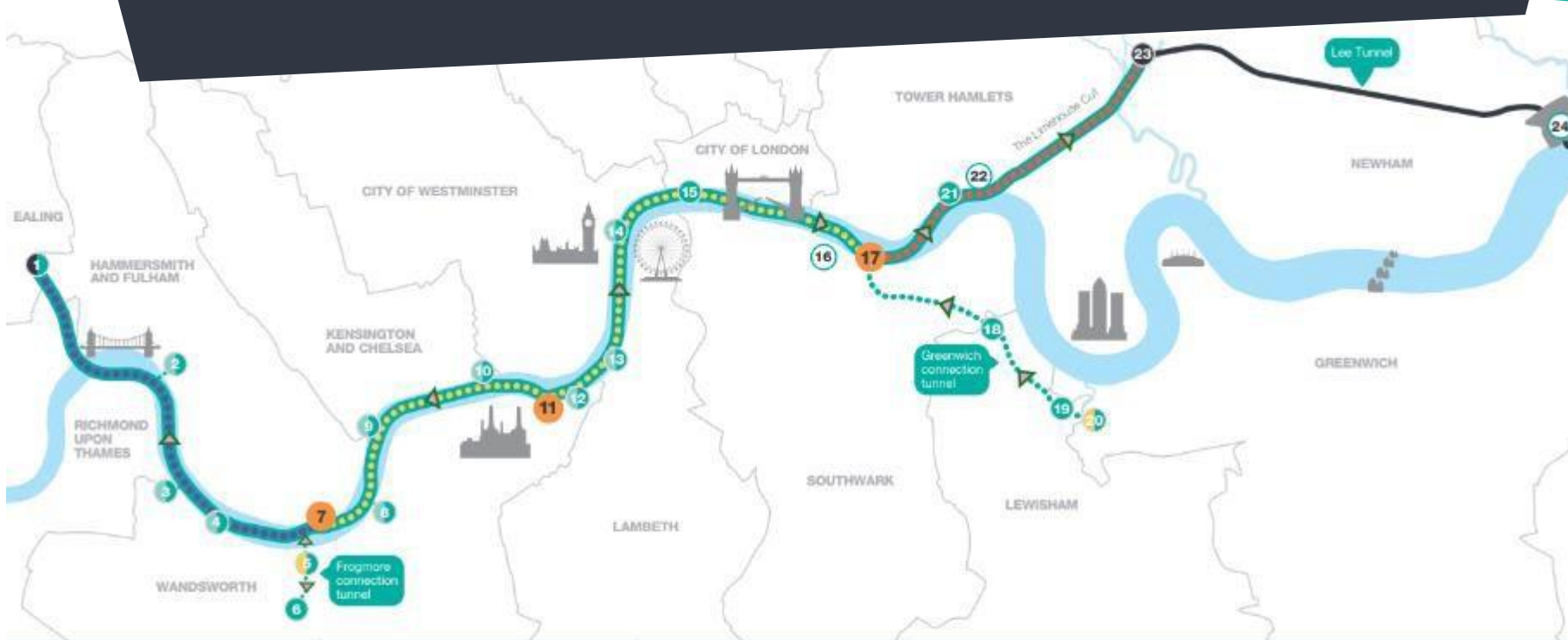
Agenda item	Topic	Name
1	Welcome, introductions, apologies	Patricia Brown
2	Notes and actions from last meeting	Patricia Brown
3	Update on the wider project Updates from Chambers Wharf project team <ul style="list-style-type: none"><li>• Construction update and upcoming activities</li><li>• Noise and air quality</li><li>• Trigger Action Plans, mitigation and contacting Tideway</li><li>• Legacy and Community Investment</li></ul>	Emily Black James Hatrick-Smith & Jesse Barr Lydia Claxton Emily Black Martin Griffiths
4	Southwark Council Section 106 and Community Enhancement Fund updates	Southwark Council Jacqueline Christie
5	Feedback and discussion	All
6	Any other business	All
7	Meeting ends	

## Actions from last meeting

Date	Action	Who	Status
4 Nov 2024	Southwark Council to speak to the Council's ground maintenance team to see what can be done regarding the plants that have been planted at Fountain Green Square.	Southwark Council	Open
4 Nov 2024	Tideway to look at a way to celebrate finishing at Chambers Wharf	Tideway	Open
4 Nov 2024	Thames Water to take question away and follow up - A resident asked if the Tideway tunnel will have any impact on the usage of the Thames Barrier.	Thames Water	Action closed. Thames Water note the Thames Barrier is for tidal flooding risk in the capital, the Tideway tunnel does not have any effect on the tide and therefore would not have any effect on the usage of the Thames Barrier.
4 Nov 2024	Tideway to email resident who wanted a copy of the aerial photographs that feature her property.	Tideway	Action closed. Photographs have been emailed to resident.
4 Nov 2024	A resident reported a beeping excavator on site. Team to investigate.	CVB	Action closed - The excavator was demobilised from site on the 8 November so beeping should have ceased. Action closed.



# PROJECT OVERVIEW



- 1 Acton Storm Tanks
- 2 Hammersmith Pumping Station
- 3 Barn Elms
- 4 Putney Embankment Foreshore
- 5 Dormay Street
- 6 King George's Park
- 7 Carnwath Road Riverside



- 8 Falconbrook Pumping Station
- 9 Cremorne Wharf Depot
- 10 Chelsea Embankment Foreshore
- 11 Kirtling Street
- 12 Heathwall Pumping Station
- 13 Albert Embankment Foreshore
- 14 Victoria Embankment Foreshore
- 15 Blackfriars Bridge Foreshore



- 17 Chambers Wharf
- 18 Earl Pumping Station
- 19 Deptford Church Street
- 20 Greenwich Pumping Station
- 21 King Edward Memorial Park Foreshore
- 23 Abbey Mills Pumping Station



- 16 Shad Thames Pumping Station
- 22 Bokesbourne Street
- 24 Beckton Sewage Treatment Works

## MAP KEY

- Orange circle: Main tunnel drive tunnel site
- Black circle: Main tunnel reception site
- Teal circle: CSO site
- Light teal circle: Short connection tunnel drive site
- Yellow circle: Long connection tunnel drive site
- White circle: System modifications
- Thick teal line: Main tunnel
- Dotted teal line: Connection Tunnels
- Thin black line: Lee Tunnel
- Teal arrow: Proposed drive direction
- Blue dots: West works site
- Yellow dots: Central works sites
- Red dots: East works site

# PROJECT OVERVIEW

- We are cleaning up the river!
  - ✓ The sites are being connected into the new system and we are protecting the River Thames from sewage pollution
  - ✓ Data from November storms - 850,000 tonnes of sewage captured by the super sewer in a single 24-hour period (27 November)
  - ✓ Teams need to undertake 'dry' storm testing before starting 'storm' testing
  - ✓ Project on track for completion in 2025
- [December 2024 press release](#)





# CONSTRUCTION UPDATE

James Hatrick-Smith – Project Manager, CVB  
Jesse Barr – Site Agent, CVB

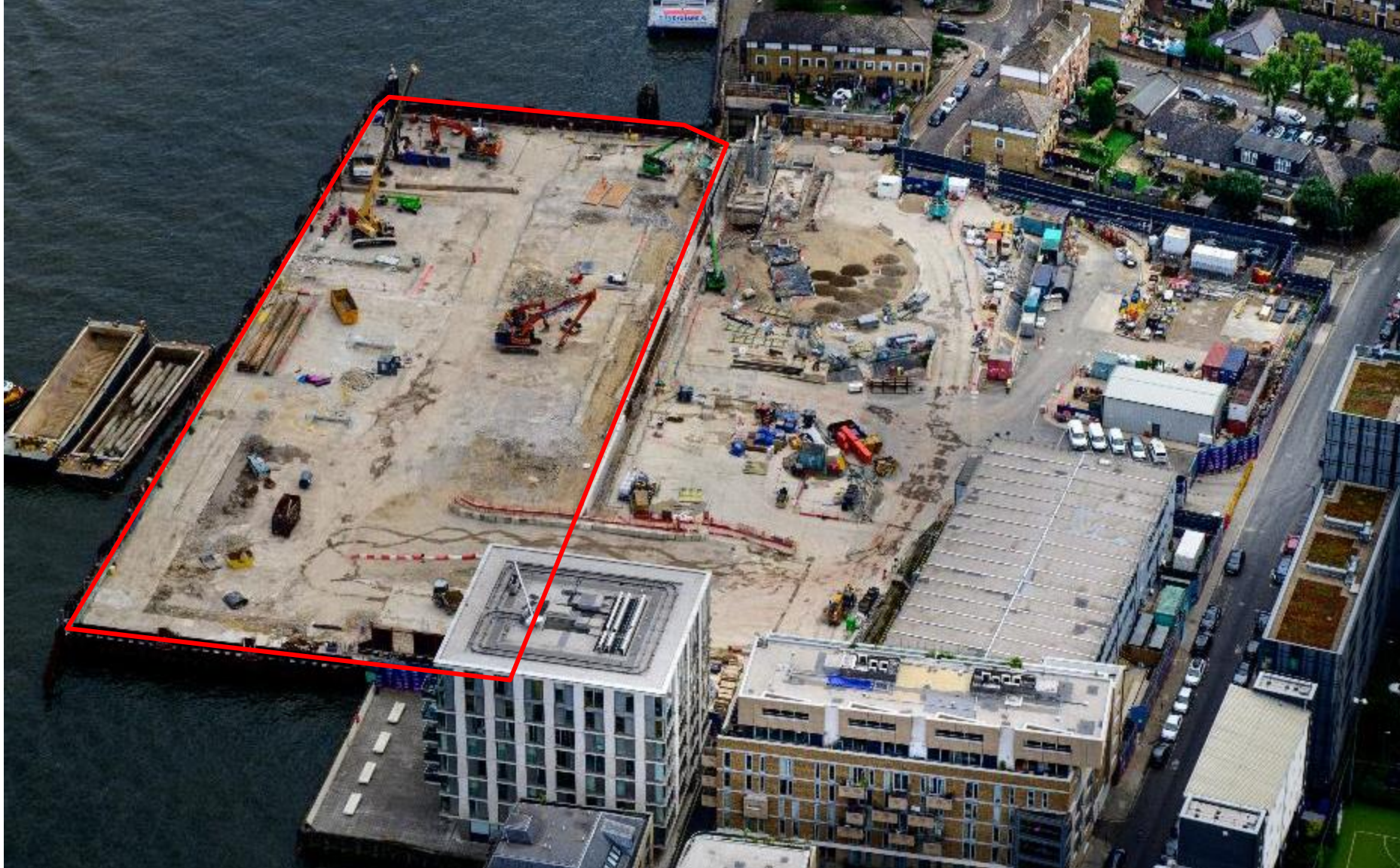


**Tideway**





# COFFERDAM AREA (aerial photograph taken July 2024)



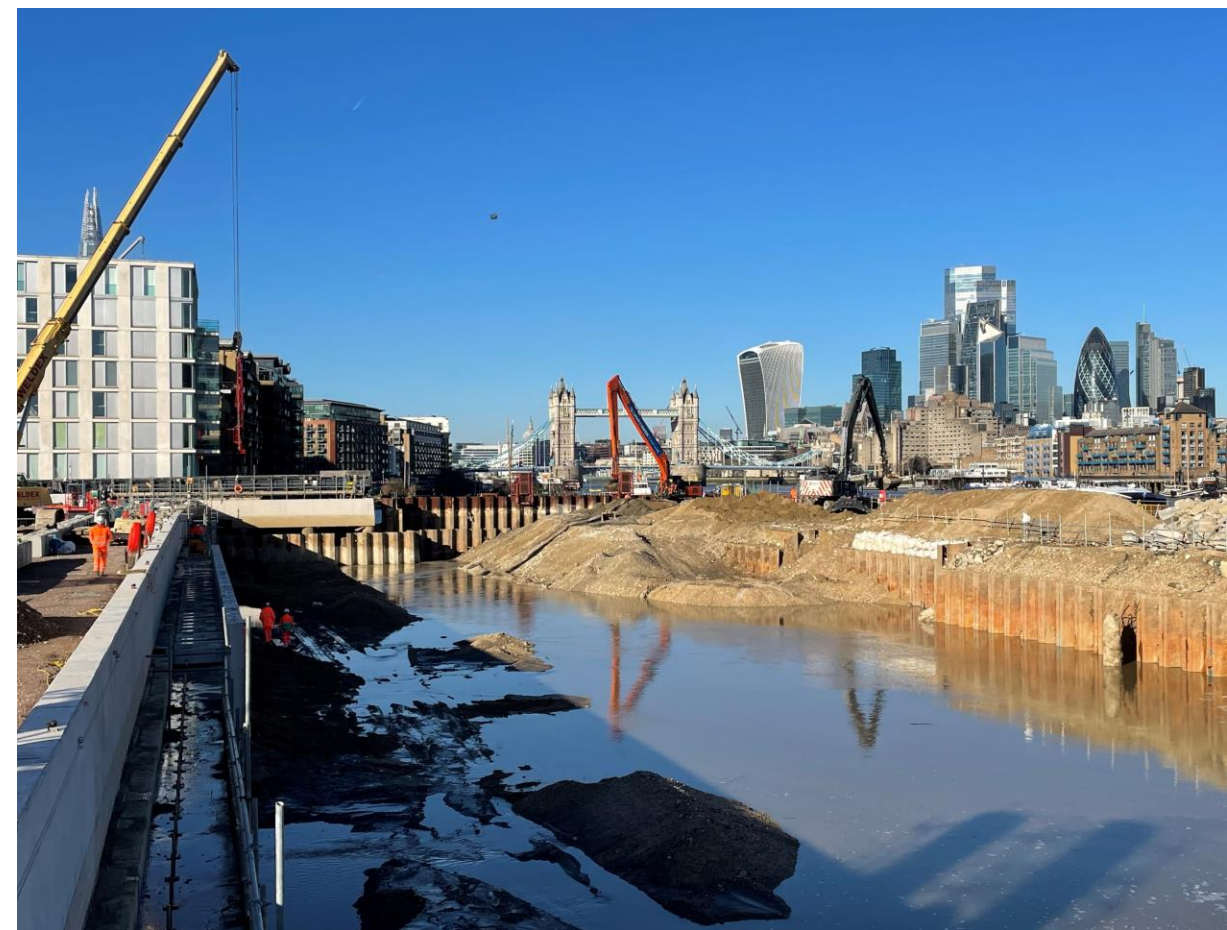
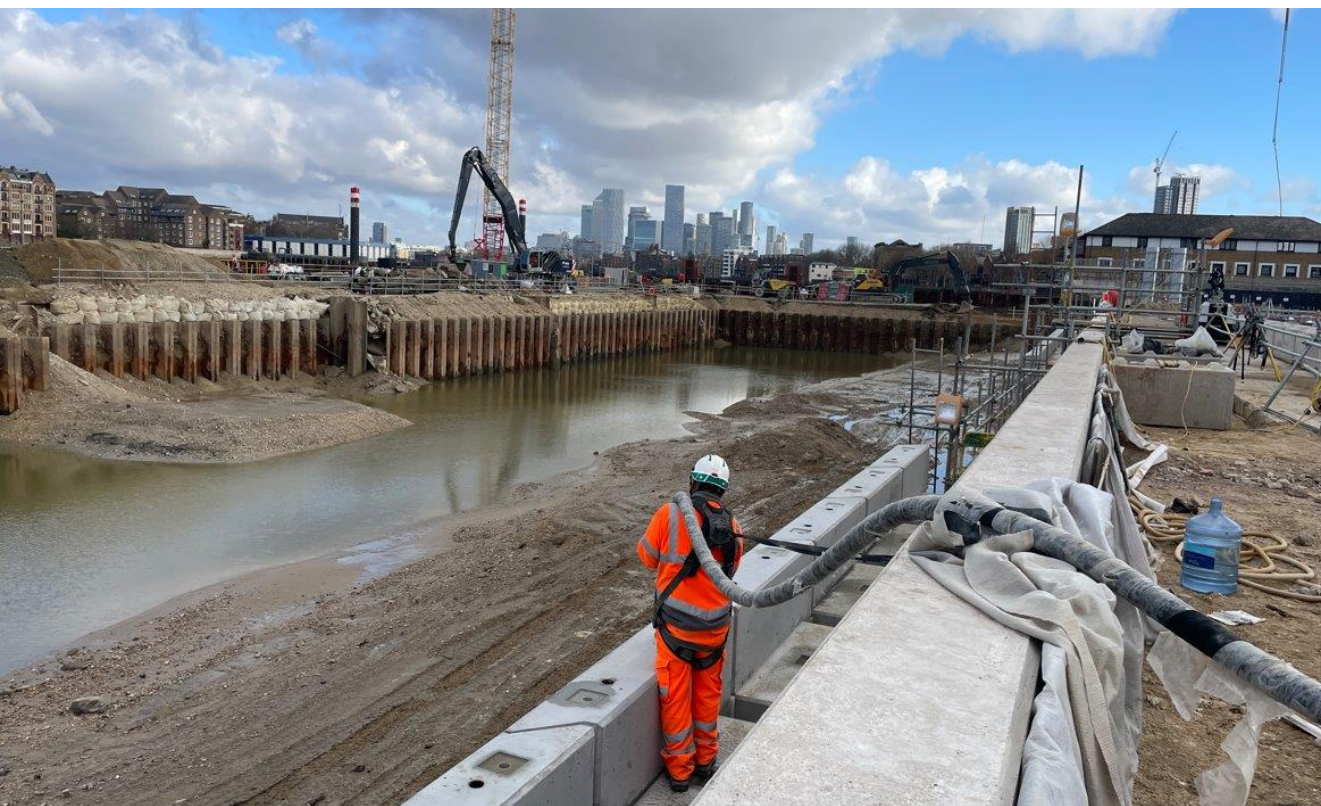


# RECENT PROGRESS – RIVER WALL PANELS AND FENDERS



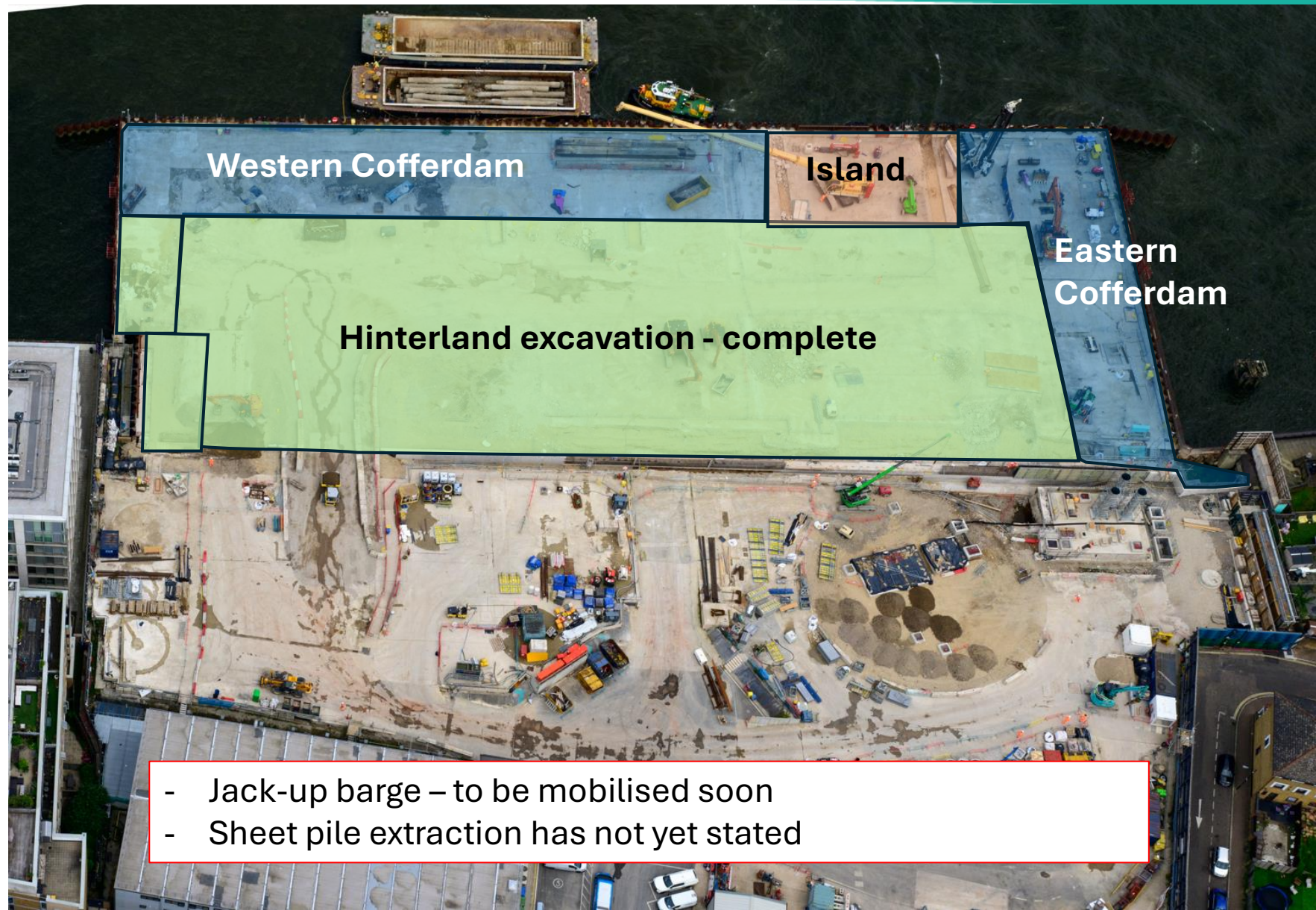


# RECENT PROGRESS – FILL MATERIAL REMOVAL

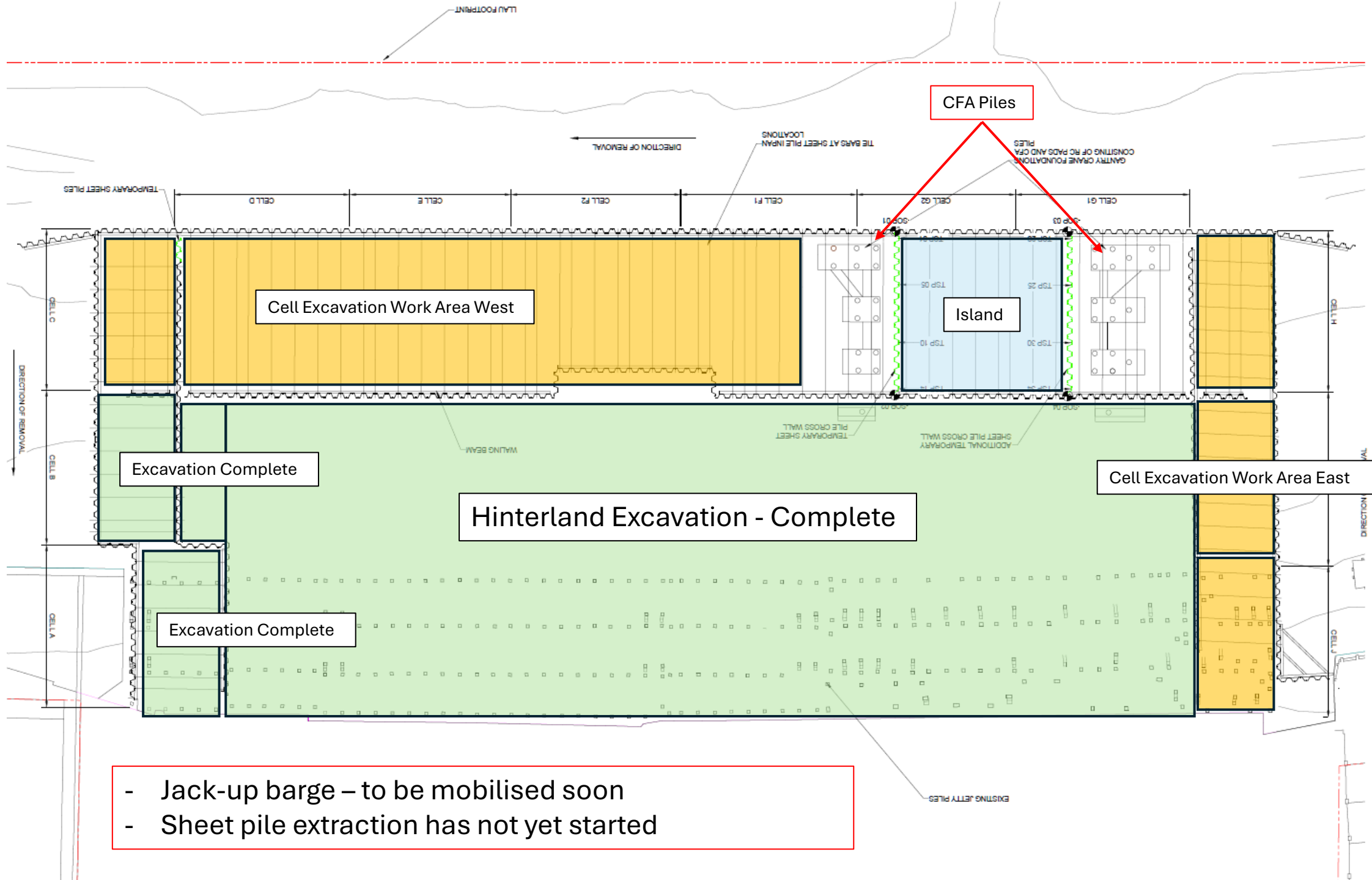




# WORK PLANNED - COFFERDAM REMOVAL SEQUENCE

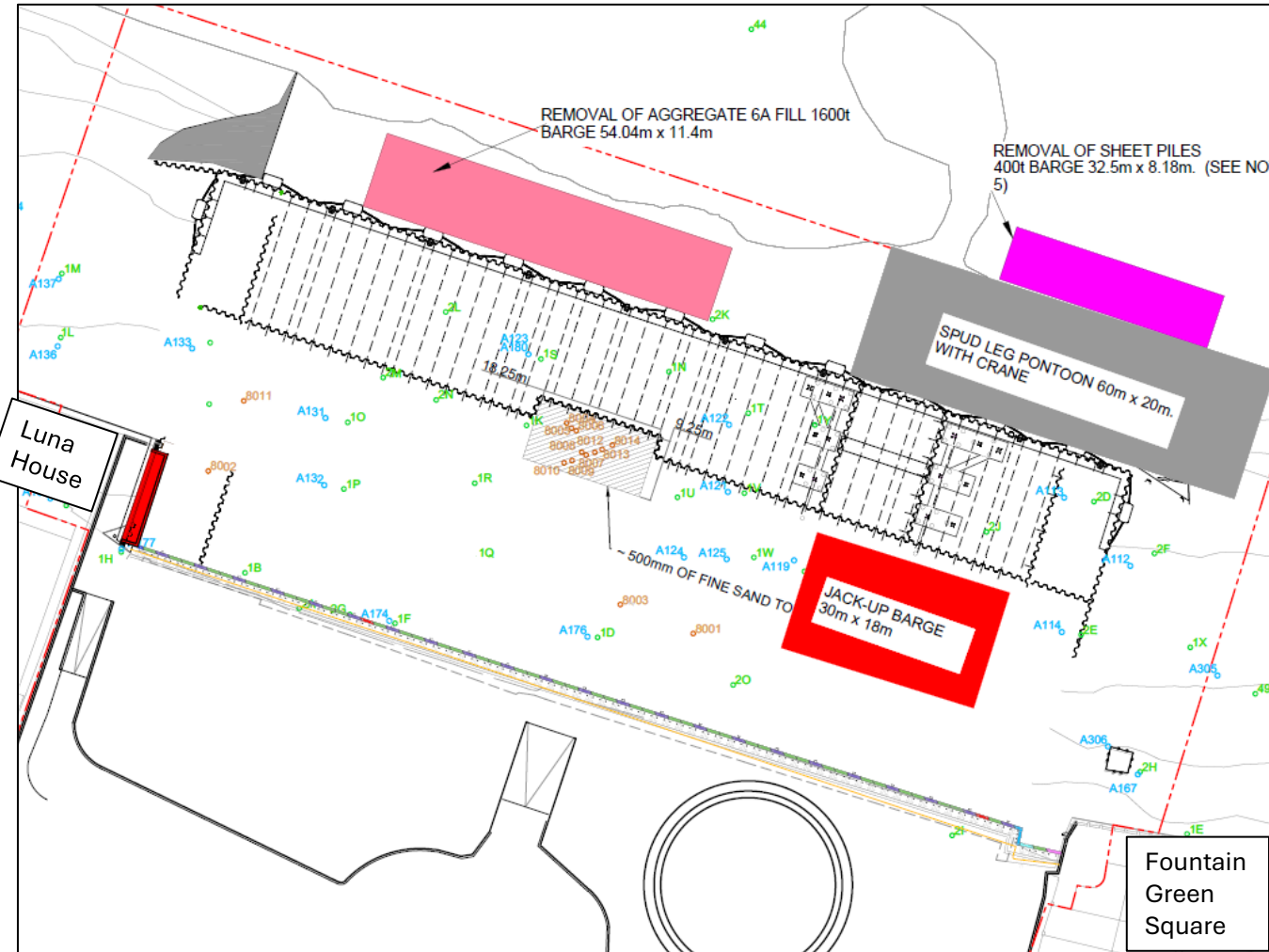
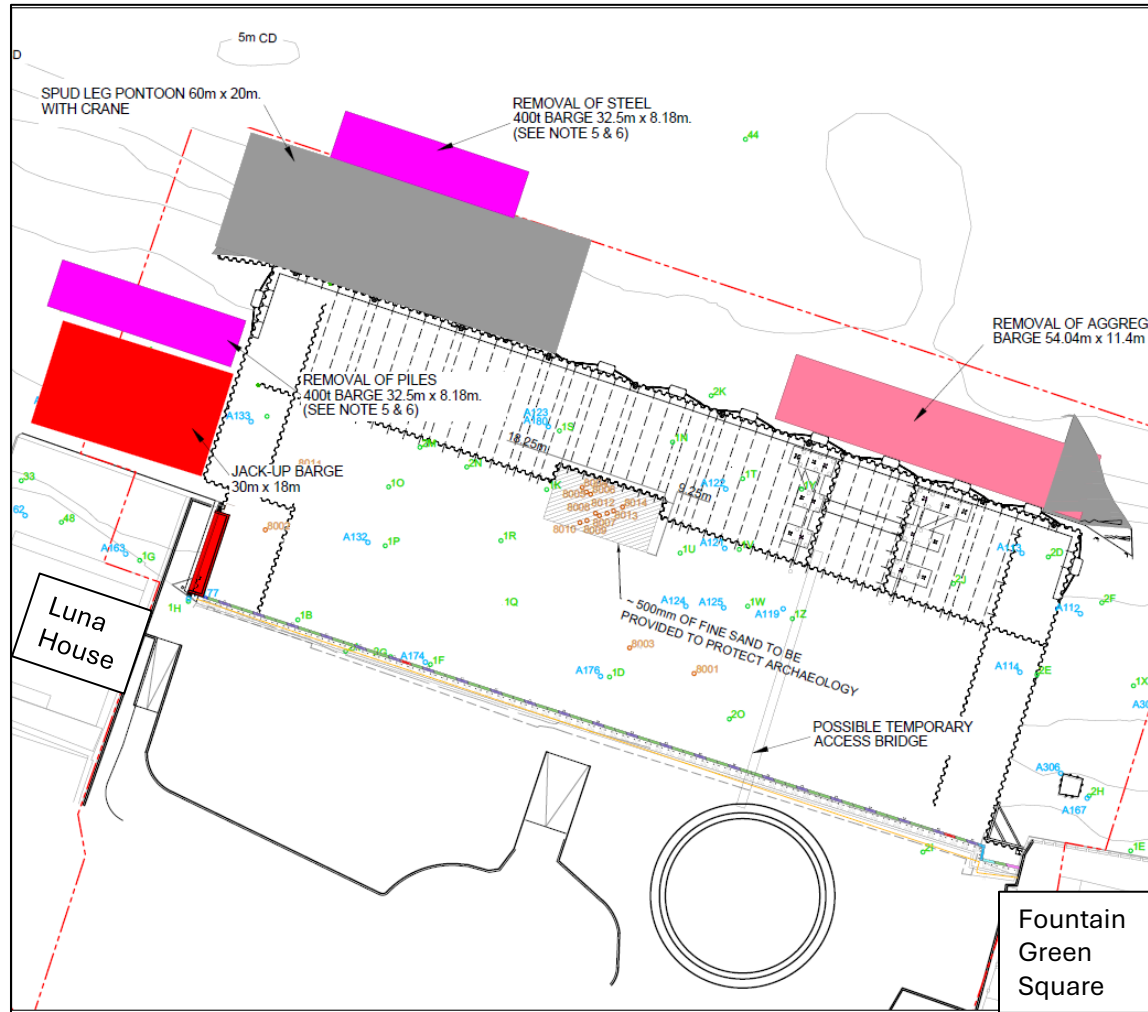






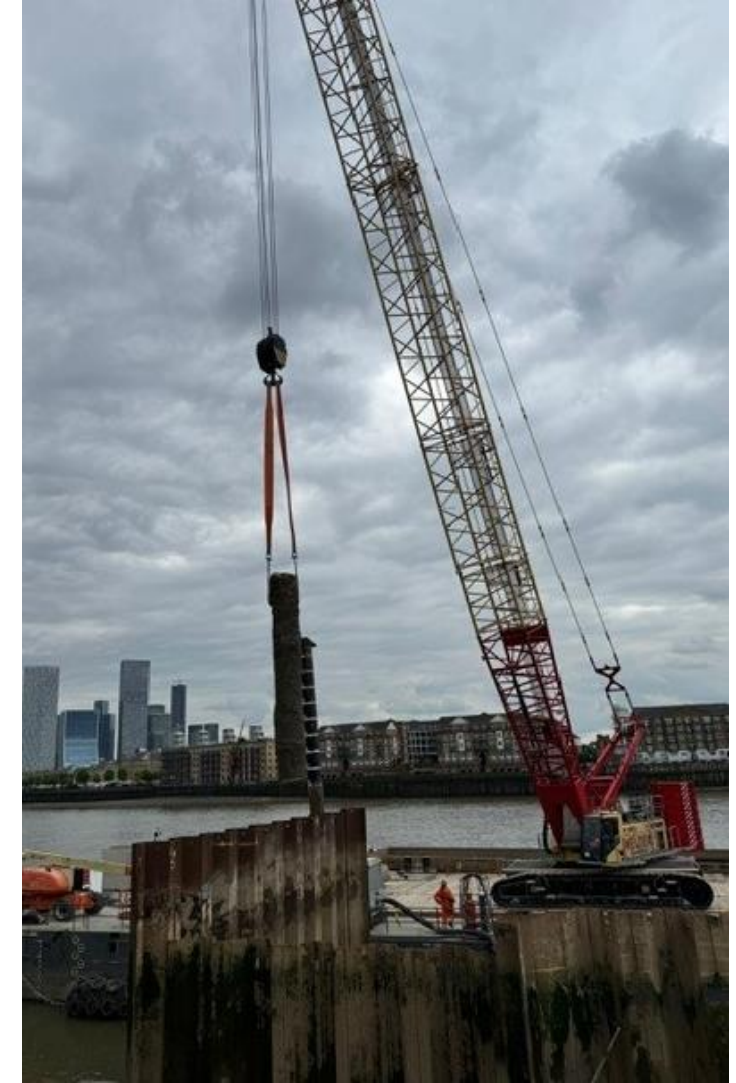
- Jack-up barge – to be mobilised soon
- Sheet pile extraction has not yet started

# WORK PLANNED – BARGE SEQUENCE



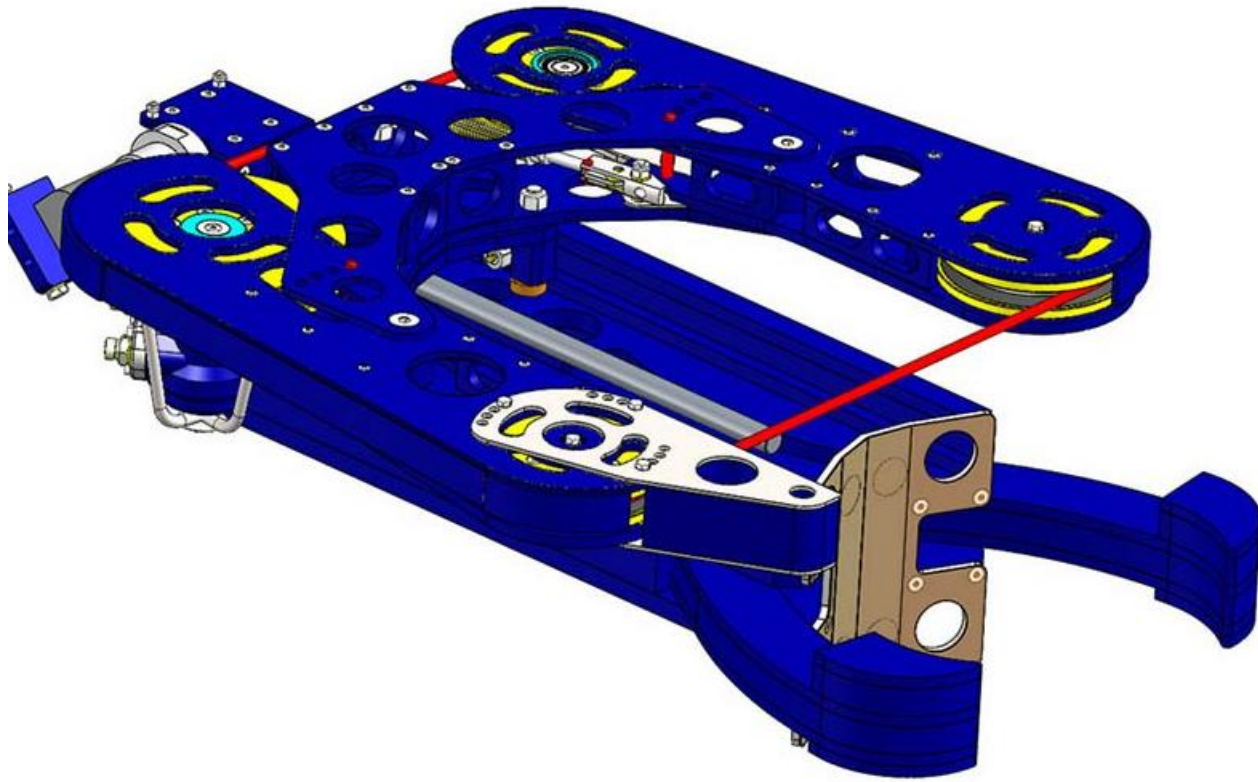


# COFFERDAM REMOVAL ACTIVITIES – CONCRETE PILE REMOVAL

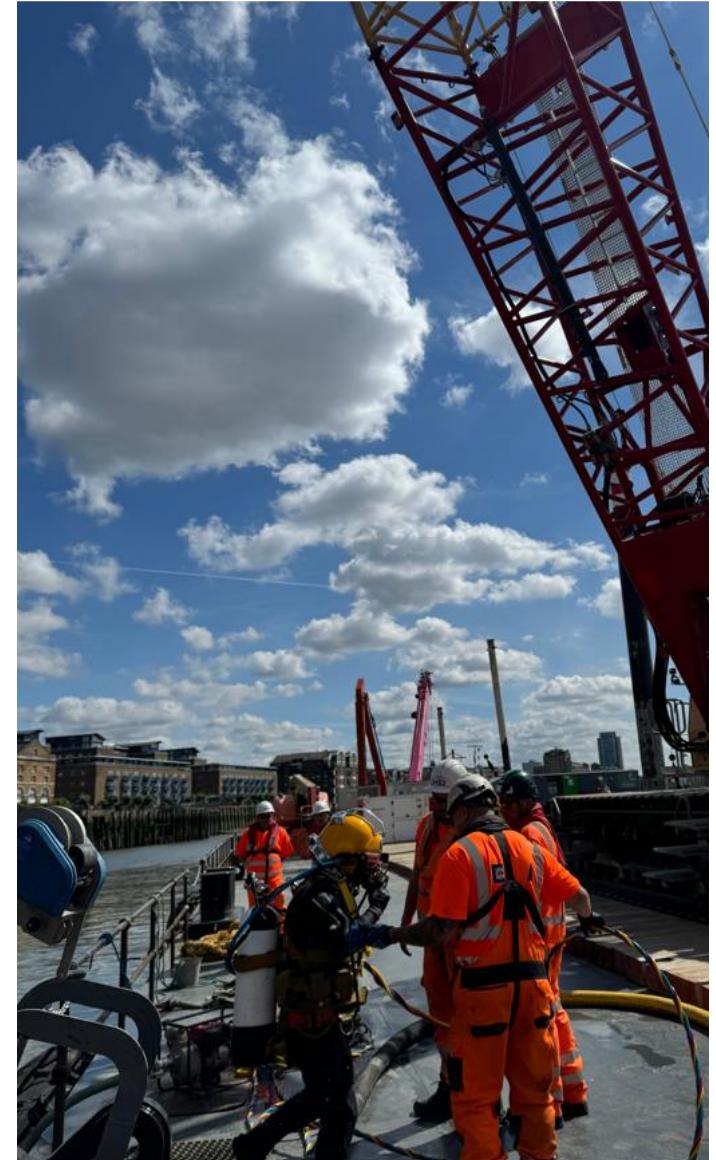




# COFFERDAM REMOVAL ACTIVITIES – CONCRETE PILE REMOVAL

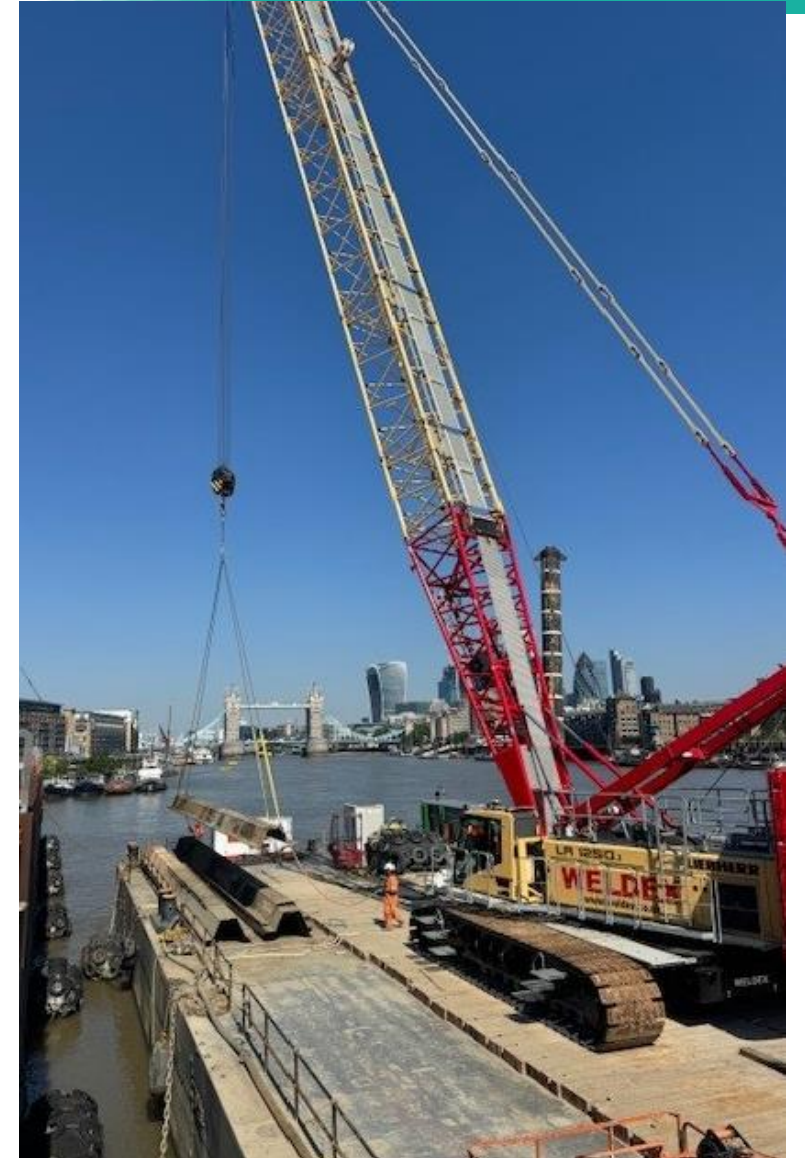
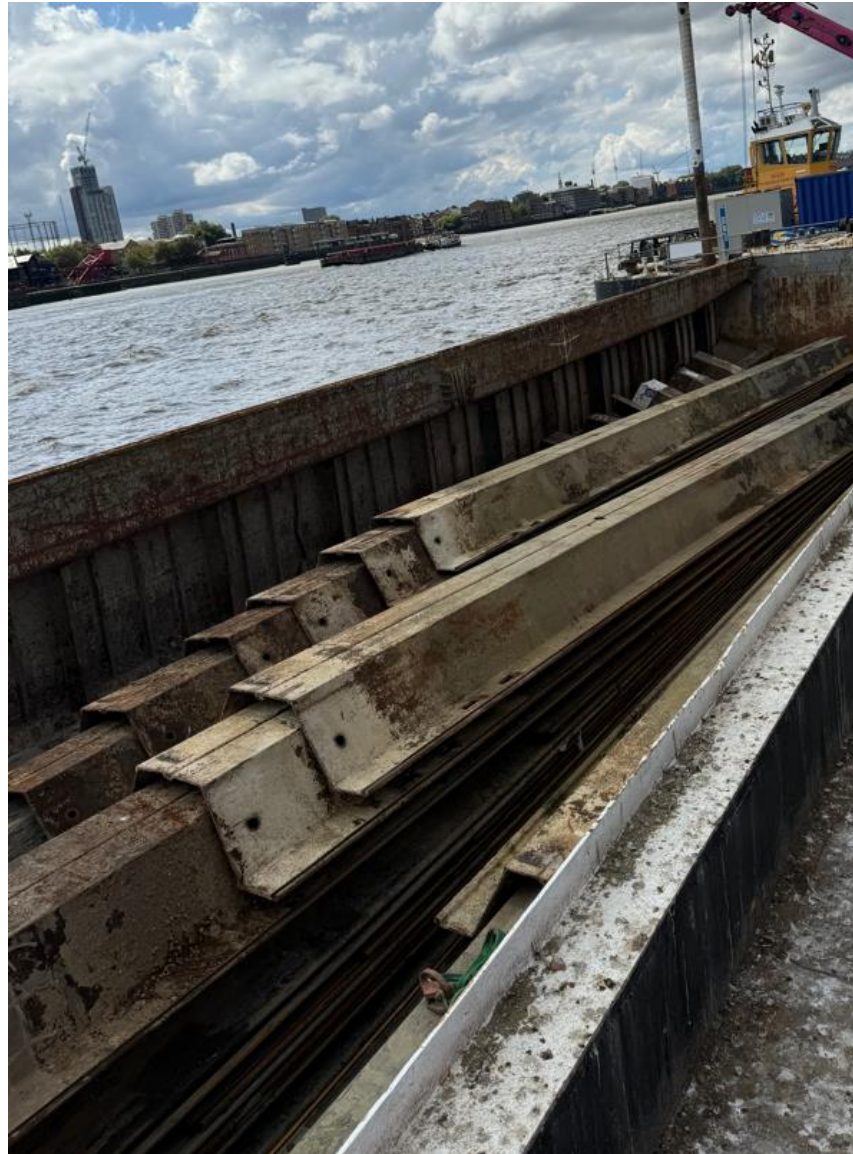
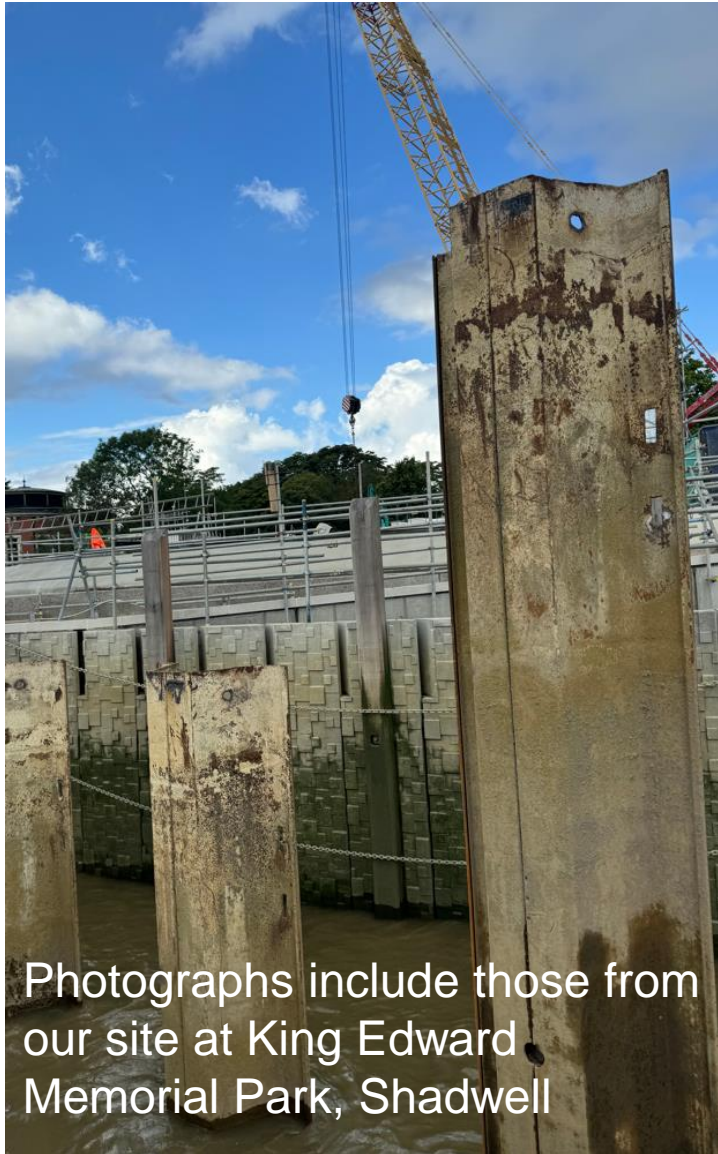


Photograph from our site at King Edward Memorial Park, Shadwell





# COFFERDAM REMOVAL ACTIVITIES – SHEET PILE REMOVAL





# COFFERDAM REMOVAL ACTIVITIES – SHEET PILE REMOVAL



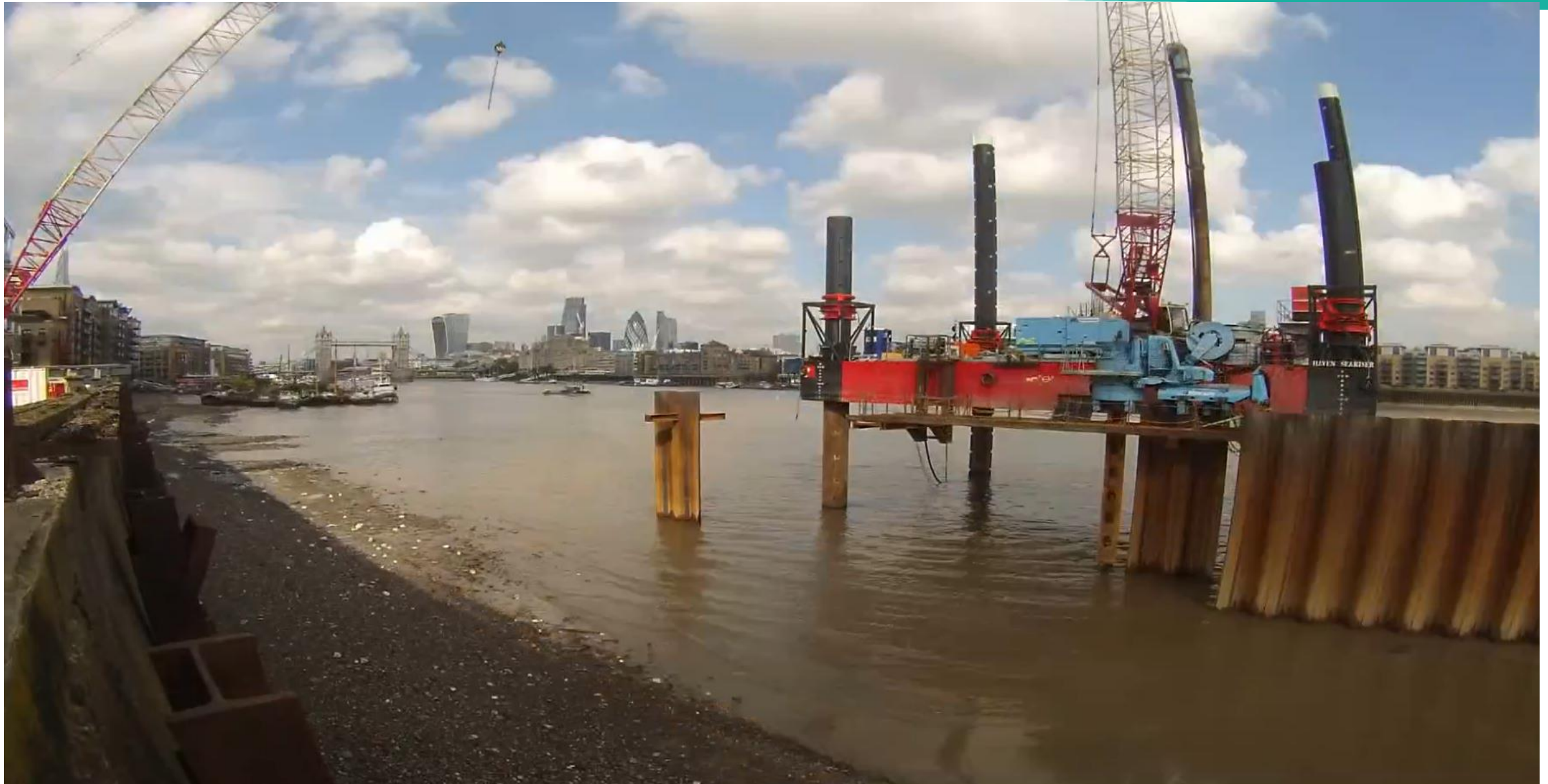
Photograph from our site at King Edward Memorial Park, Shadwell



# COFFERDAM REMOVAL ACTIVITIES – JACK-UP BARGE



# COFFERDAM REMOVAL ACTIVITIES – JACK-UP BARGE





# HIGH LEVEL PROGRAMME OF WORKS

Activity	2025			
	Jan-Mar	Apr-Jun	Jul-Sep	Oct-Dec
<b>Cofferdam Removal</b>				
<b>River Cladding Panel Instillation</b>				
<b>Architecture and Landscaping</b>				
<b>Site Resinstatement</b>				
<b>Tideway &amp; CVB Removal from site</b>				

# NOISE AND AIR QUALITY

Lydia Claxton, Environment Advisor, CVB



**Tideway**





# ENVIRONMENT SUMMARY:

## Oct 2024 – Feb 2024



### Noise monitoring

2 Section 61 noise exceedances in the last 6 months

- 2 early morning exceedances during tidal working hours (mid Jan)

### Air Quality monitoring

2 air quality exceedances in the last 6 months (24h PM10)

- Breaking out and excavation onsite (November)

Any exceedances shown by our monitors are investigated thoroughly after we are alerted.



# NOISE MITIGATION - Removal / Retention

**Summary:** At the start of the project, we installed a series of noise mitigation measures at various properties in line with our Trigger Action Plan process. As works at Chambers Wharf come to a close, the noise mitigation previously installed will be removed if this has been requested.

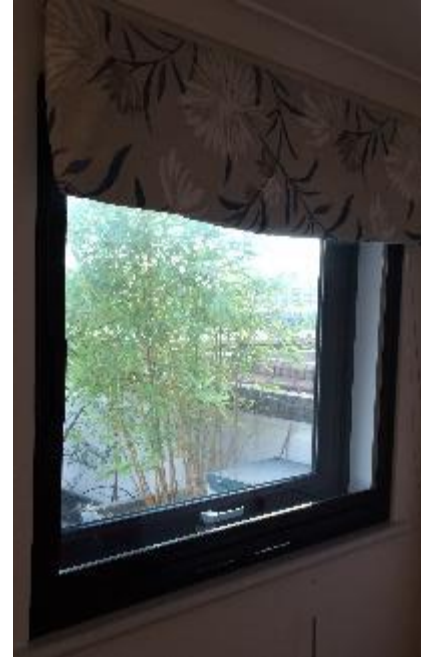
The noise mitigation measures installed were primarily:

- External balcony screens
- Internal secondary glazing
- Ventilation units

We sent out letters in 2023 to confirm relevant recipient's preference on whether they wished to keep these permanently or have them removed.

We now have established what needs to be removed and are preparing for arranging the removal works.

If you have received noise mitigation measures and haven't been sent a letter, **please let us know.**





# NOISE MITIGATION - Removal / Retention

## Next steps:

### **If you told us that you want to retain noise mitigation measures permanently:**

- We'll be posting close-out letters, which we'll ask you to sign and return. This will look to formalise your acceptance permanently.

### **If you told us that you wanted to have any noise mitigation measures removed:**

- We'll contact you in the coming months to organise the removal of the relevant elements (and make good of any holes, damage etc.)

The freeholders of Axis Court and Luna House have stated **we must remove** the external balcony screens installed, regardless of leaseholder / resident preferences.



It's worth remembering the expected future residential development which will likely take place at Chambers Wharf when considering whether you want to have any noise mitigation removed.

# MITIGATION – INDEPENDENT COMPENSATION PANEL

## **Making a claim if affected by Tideway's work**

### **Who do I go to for advice?**

For personal assistance contact our Helpdesk: 08000 30 80 80 or [helpdesk@tideway.london](mailto:helpdesk@tideway.london)

For independent advice contact Independent Advisory Service (IAS) Helpline: 0800 917 8845 or [info@tidewayias.co.uk](mailto:info@tidewayias.co.uk)

### **How do I submit my claim?**

The Helpdesk can submit your claim to the Independent Compensation Panel (ICP) on your behalf, or you can submit your claim direct to the ICP: [admin@tidewayicp.london](mailto:admin@tidewayicp.london)

You can download the claim form from the Tideway website:

[www.tideway.london/help-advice/compensation-information/Independent-Compensation-Panel](http://www.tideway.london/help-advice/compensation-information/Independent-Compensation-Panel)



# CONTACTING TIDEWAY

- Call us on 08000 30 80 80
- Email us at [helpdesk@tideway.london](mailto:helpdesk@tideway.london)

Follow us on our social media platforms:



[Twitter / X](#)



[Facebook](#)



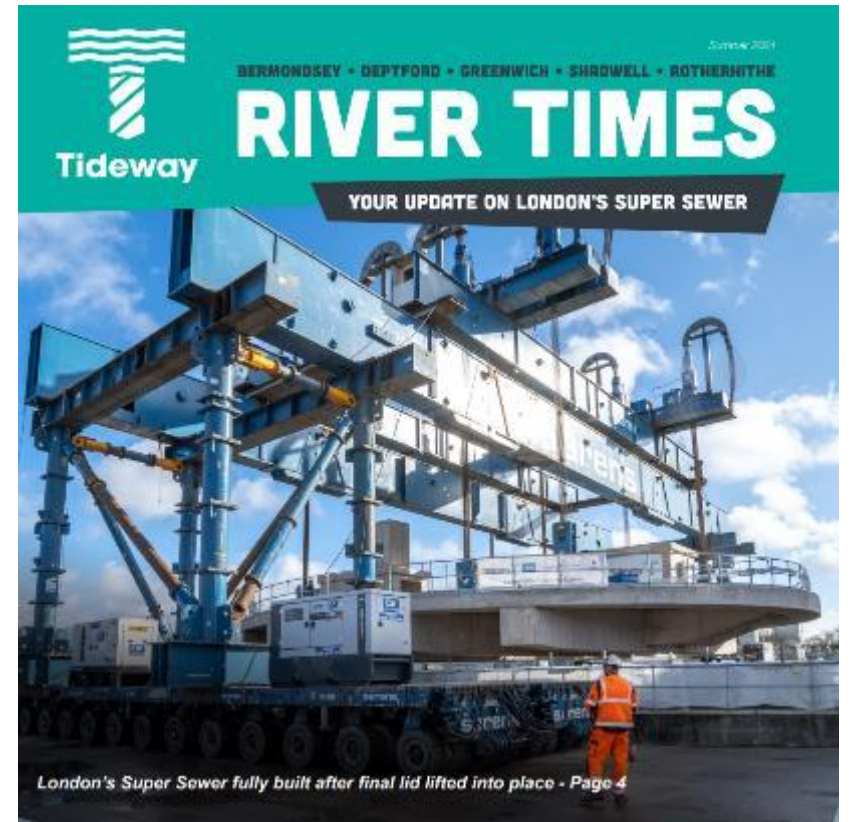
[Instagram](#)



[LinkedIn](#)



[YouTube](#)





# LEGACY



Tideway





# Community investment highlights

- Supported the annual Poppy Appeal in November
- Hosted a Macmillan Cancer Support coffee morning
- Supported Southwark Cathedral's Christmas Community Carol service in December
- RNLI drill from our site in January



# CHAMBERS WHARF COMMUNITY ENHANCEMENT FUND (CEF)

Jacqueline Christie  
Project Manager  
October 2024





# Scott Lidgett & Wickfield play area

The contract is out to be tendered, and we hope to have appointed by the end of next month.



# How to get involved

- Residents with community improvement ideas are encouraged to **work together** to make an application to the Community Enhancement Fund.
- Full details and the application form are available on Southwark Council's website at <https://www.southwark.gov.uk/planning-environment-and-building-control/current-and-future-development/thames-tideway-tunnel-2>

## Next Funding - Deadline

The next deadline for submitting applications is now – **28 February 2025**



# THANK YOU



## Any Questions?

3D render – indicative illustration

