

# WEEKLY SITE UPDATE



**6 June 2025**

Dear Neighbour

This is your weekly newsletter from the site team at Chambers Wharf.

## CURRENT AND UPCOMING SITE ACTIVITIES

Location	Activity	When/duration
Riverfront	Installing 79 architectural river wall panels - 12 remain	Continues through June
West side of site	Minor concrete works for the new Luna House jetty	Continue this month
East side of site	Block paving installation over the shaft	Continues this month
East side of site	MEICA (Mechanical, Electrical, Instrumentation, Control & Automation) has just minor work remaining; plus architecture and landscape work around the kiosk	Continues to the end of June
Loftie St / Chambers St	Hoarding adjustments around the site. Local traffic management in place managing works outside the site	Continuing into July
Cofferdam	Breaking out concrete with excavators	Continues until the Summer
Cofferdam	Removing excavated fill material and stockpiling it with excavators, as it will all be removed by barge	Continues until the Summer
Cofferdam	Dismantling sections with thermal cutting equipment	Continues until the Summer
Cofferdam & Marine	Sheet pile extraction: 84/410 out so far. 27 additional piles cut to foreshore level to allow barge movements	Continues until the Summer
Foreshore	Accessing under the existing jetty for the new slab	Continues until the Summer

Crane deliveries will arrive as abnormal loads next week.

## THIS WEEKEND

The site team will not be working this weekend but, as usual, the 24-hour onsite security team will be on regular patrol; site staff will also monitor and inspect equipment.

## WORKING HOURS

Next week we are planning to work the following hours for tidal activities, which may alter on a day that the jack-up barge is being relocated within the site:

- Monday 9 June      5am until 3pm
- Tues 10              5am until 3pm
- Wed 11              6am until 4pm
- Thurs 12             6am until 4pm
- Fri 13                6am until 3pm

**24 HOUR HELPDESK    08000 30 80 80**

helpdesk@tideway.london | Freepost TIDEWAY  
www.tideway.london



Normal working hours for other activities are:

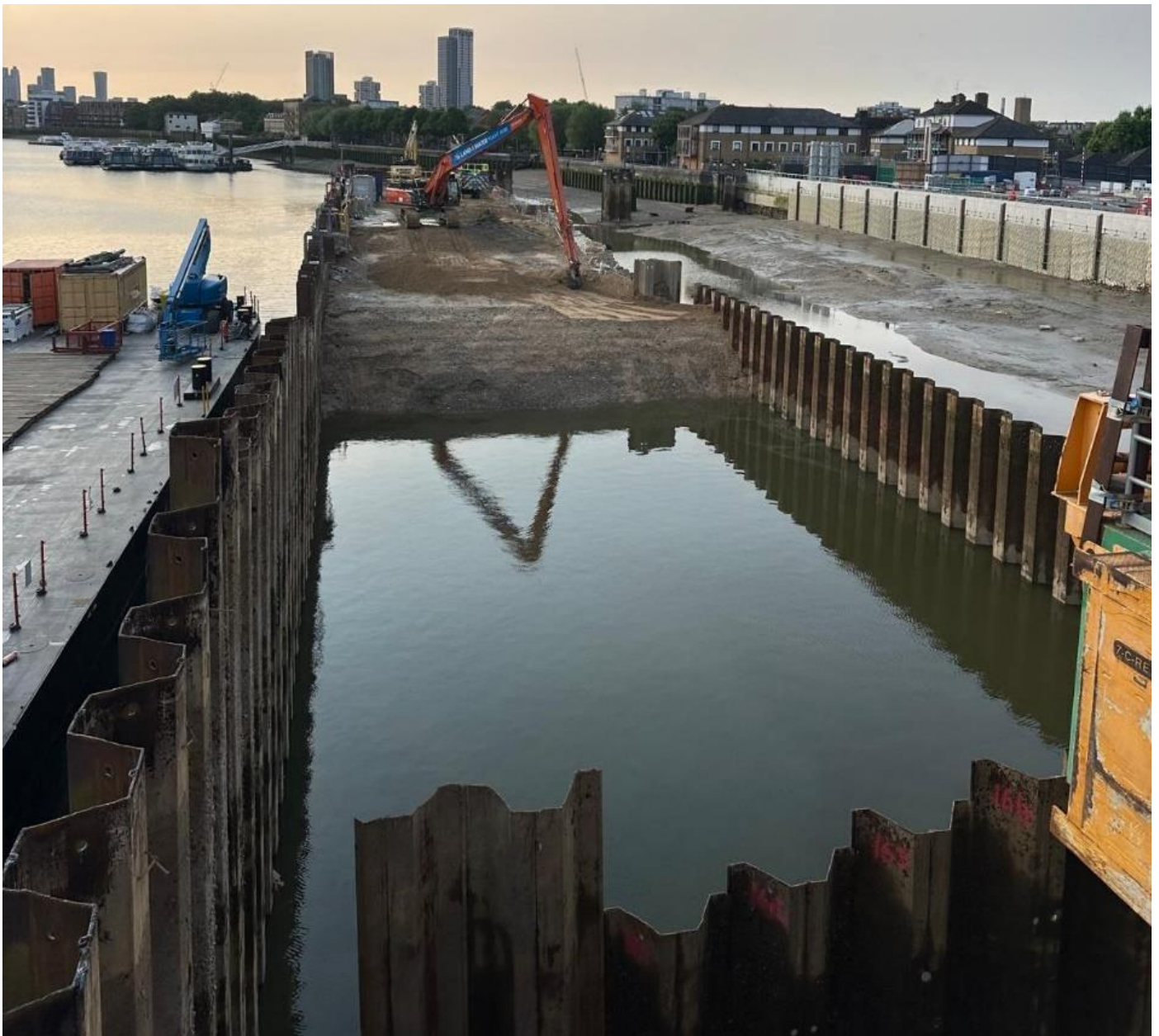
- Monday to Friday: 8am - 6pm
- Saturday: 8am - 1pm

Concrete breaking activities will only be:

- Monday to Friday: 8am - 6pm
- Saturday: 9am - 2pm (starting and finishing an hour later than standard hours)

We endeavour to finish all work onsite by 6pm, but other support activities, such as moving materials and pouring concrete, may continue until 8pm.

Tidally affected activities, such as river wall panel installation and cofferdam removal, may take place from 5am to 10pm. This includes excavation, cell dismantling, stockpiling materials, lifting activities plus barge loading and movements. We do not plan any noisy activities after 6pm.



*Picture shows continuing cofferdam excavation*

## COMMUNITY LIAISON WORKING GROUP – 16 JUNE

We will be hosting the next community liaison working group meeting in our site offices at Chambers Street, SE16 4XR on Monday 16 June, starting at 6.30pm.

If you would like to attend, please let us know by 5pm next Friday, 13 June, so we can inform our security team, as only pre-registered guests will be admitted.

Send your full name to [getinvolved@tideway.london](mailto:getinvolved@tideway.london), detailing any access requirements.

The meeting will:

- provide an update on Tideway's recent work at Chambers Wharf and the super sewer generally
- let you know what will be happening on the site over the coming months as we continue to remove the cofferdam (the temporary area of land that was built out into the river)
- provide an update from officers at Southwark Council about the Community Enhancement Fund and relevant Section 106 projects

## INDEPENDENT COMPENSATION PANEL

If you feel affected by our work, please contact the Helpdesk, who can advise on support available through the Independent Compensation Panel. Mitigation could include daily respite, alternative office accommodation, installation of secondary glazing, blackout blinds or noise cancelling headphones.

If you would like to make an application to the Independent Compensation Panel (ICP), please contact [helpdesk@tideway.london](mailto:helpdesk@tideway.london) for a copy of the form.

## CONTACT DETAILS

- Tideway Helpdesk: 08000 30 80 80 or [helpdesk@tideway.london](mailto:helpdesk@tideway.london)
- Southwark Council Environmental Health: [environment@southwark.gov.uk](mailto:environment@southwark.gov.uk)