

# Chambers Wharf Community Liaison Working Group December 2025



Monday 15 December 2025  
Chair – Patricia Brown

# Agenda

Agenda item	Topic	Name
1	Welcome, introductions, apologies	Patricia Brown
2	Actions from last meeting	Patricia Brown
3	Update on the wider project Updates from Chambers Wharf project team <ul style="list-style-type: none"><li>• Construction update and upcoming activities</li><li>• Noise and air quality</li><li>• Trigger Action Plans, mitigation and contacting Tideway</li><li>• Legacy and Community Investment</li></ul>	Allen Summerskill  James Hatrick-Smith & Yuriy Melnychok Allen Summerskill Martin Griffiths
4	Southwark Council Section 106 and Community Enhancement Fund updates	Southwark Council Catherine Brownell
5	Feedback and discussion	All
6	Any other business	All
7	Meeting ends	

ACTIONS FROM LAST MEETING			
Date	Action	Who	Status
16 Jun 2025	<b>Action 1</b> - PB to mention the resident’s feedback on the communications of the planning amendment to her contact at Berkeley Homes. PB noted this will be informal feedback rather than a formal complaint.	Chair of CLWG	Open – PB has been in discussion with Berkeley Homes and will provide feedback at Dec CLWG.
16 Jun 2025	<b>Action 2</b> - PB to speak to the Director of Planning and Growth at Southwark Council to confirm whether the Thames Path will remain closed during construction of the future development.	Chair of CLWG	Open - PB has been in discussion with LB Southwark and will provide feedback at Dec CLWG.
16 Jun 2025	<b>Action 3</b> – Tideway to provide a copy of the Low Frequency Noise independent review to the residents that have been communicating with SG as well as the two relevant teams at Southwark and Tower Hamlets councils once received. Any other residents/parties that want a copy of the report should contact the Tideway helpdesk – <a href="mailto:heldesk@tideway.london">heldesk@tideway.london</a> .	Tideway	Closed – report issue to resident and LB Southwark & LB Tower Hamlets.
16 Jun 2025	<b>Action 4</b> – Southwark Council to produce and circulate an evaluation report on the Community Enhancement Fund once all projects have been delivered.	Southwark Council	Open – LB Southwark to provide update. Report will be circulated once written.



# Project overview

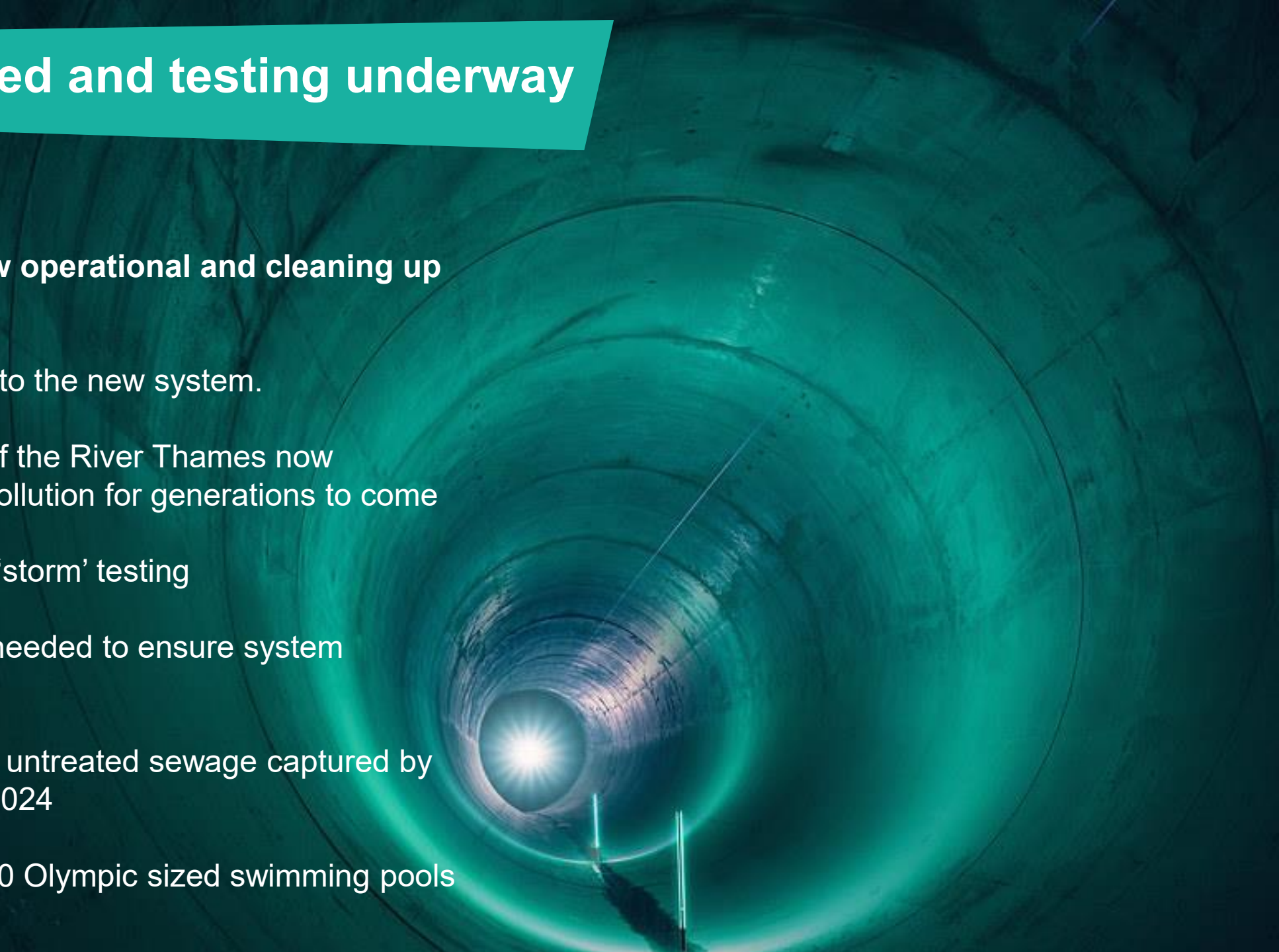


 <b>BMB</b> WEST	 <b>FLO</b> CENTRAL	 <b>CVB</b> EAST	 
<ul style="list-style-type: none"> <li>1 Acton Storm Tanks</li> <li>2 Hammersmith Pumping Station</li> <li>3 Barn Elms</li> <li>4 Putney Embankment Foreshore</li> <li>5 Dormay Street</li> <li>6 King George's Park</li> <li>7 Carnwath Road Riverside</li> </ul>	<ul style="list-style-type: none"> <li>8 Falconbrook Pumping Station</li> <li>9 Cremorne Wharf Depot</li> <li>10 Chelsea Embankment Foreshore</li> <li>11 Kirtling Street</li> <li>12 Heathwall Pumping Station</li> <li>13 Albert Embankment Foreshore</li> <li>14 Victoria Embankment Foreshore</li> <li>15 Blackfriars Bridge Foreshore</li> </ul>	<ul style="list-style-type: none"> <li>17 Chambers Wharf</li> <li>18 Earl Pumping Station</li> <li>19 Deptford Church Street</li> <li>20 Greenwich Pumping Station</li> <li>21 King Edward Memorial Park Foreshore</li> <li>23 Abbey Mills Pumping Station</li> </ul>	<ul style="list-style-type: none"> <li>16 Shad Thames Pumping Station</li> <li>22 Bokesbourne Street</li> <li>24 Beckton Sewage Treatment Works</li> </ul>
			<p><b>MAP KEY</b></p> <ul style="list-style-type: none"> <li>Main tunnel drive tunnel site</li> <li>Main tunnel reception site</li> <li>CSO site</li> <li>Short connection tunnel drive site</li> <li>Long connection tunnel drive site</li> <li>System modifications</li> <li>Main tunnel</li> <li>Connection Tunnels</li> <li>Lee Tunnel</li> <li>Proposed drive direction</li> <li>West works site</li> <li>Central works sites</li> <li>East works site</li> </ul>



# Tideway activated and testing underway

- **The Super Sewer is now operational and cleaning up the river.**
- ✓ All sites are connected into the new system.
- ✓ Central London section of the River Thames now protected from sewage pollution for generations to come
- ✓ System now undergoing 'storm' testing
- ✓ Various levels of rainfall needed to ensure system operates correctly
- ✓ Over 12 Million tonnes of untreated sewage captured by the tunnel since August 2024
- ✓ Equivalent to approx 5000 Olympic sized swimming pools



# Tideway - website calculator



## 12,411,109 TONNES

sewage diverted from the River Thames\*

\*into the London Tideway Tunnel system since August 2024. The tunnel was fully connected and operational in February.

Data last updated 13/11/2025.

**One million tonnes** is the equivalent of **1,000,000m<sup>3</sup>** (cubic metres) - or 400 Olympic-sized swimming pools, which if you put out in a row would stretch for 20km!



# Duke of Gloucester celebrates work at King Edward Memorial Park Foreshore August 2025





# Construction update

James Hatrick-Smith – Project Manager, CVB

Yuriy Melnychok – Site Agent, CVB



**Tideway**





# Tideway East – Progress Update





# CHAWF – Update of Works

June 2025

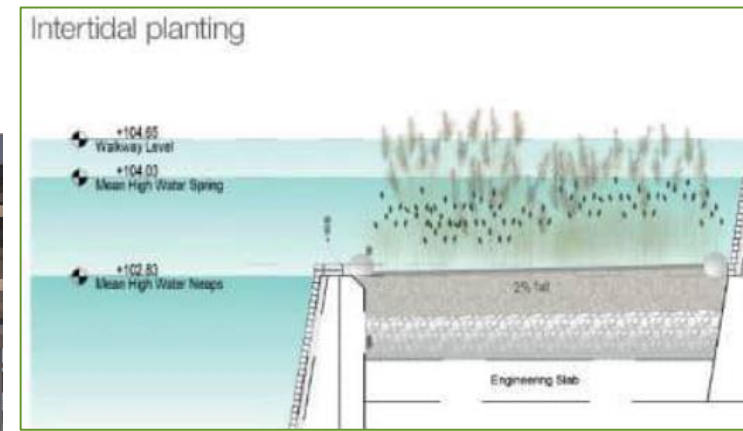
October 2025

Luna House Jetty – waterproofing joint installed - snagging

- 100% of Architectural Cladding Panels Installed
- 100% Fenders and Chains
- 100% ITT planting to commence in July
- 100% installed apart from section over the tunnel entry point

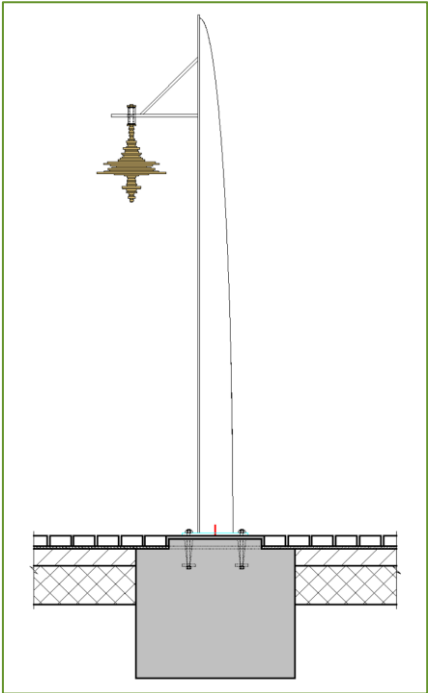


# INTERTIDAL PLANTING





# COLUMNS AND BELL



Bronze Bell



Ventilation Columns



Tidal Marker 101m ATD from invert level of the tunnel ( CI 101)

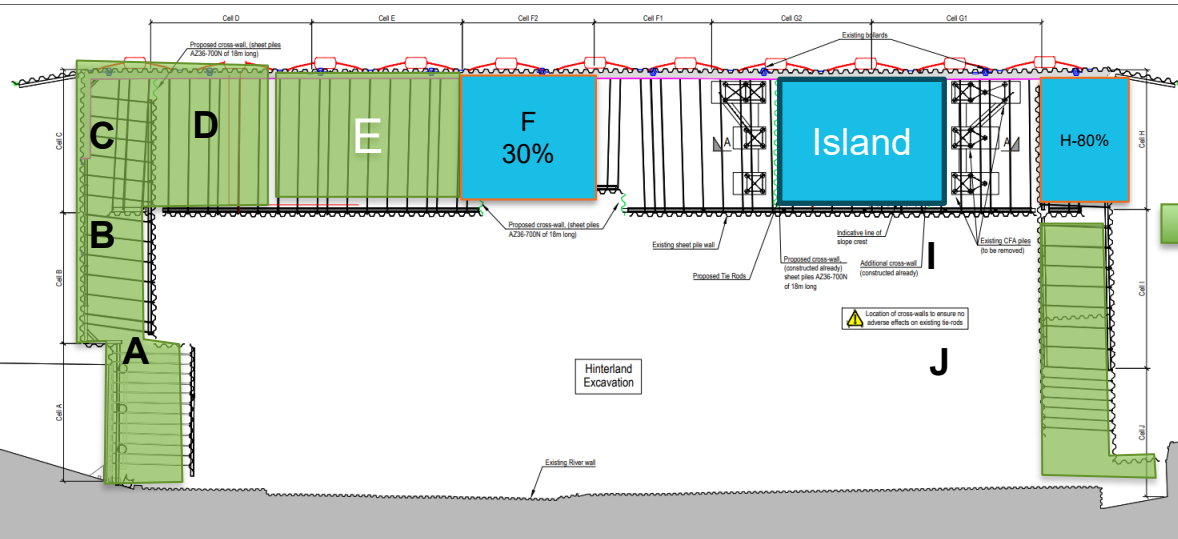


Bronze Plaque

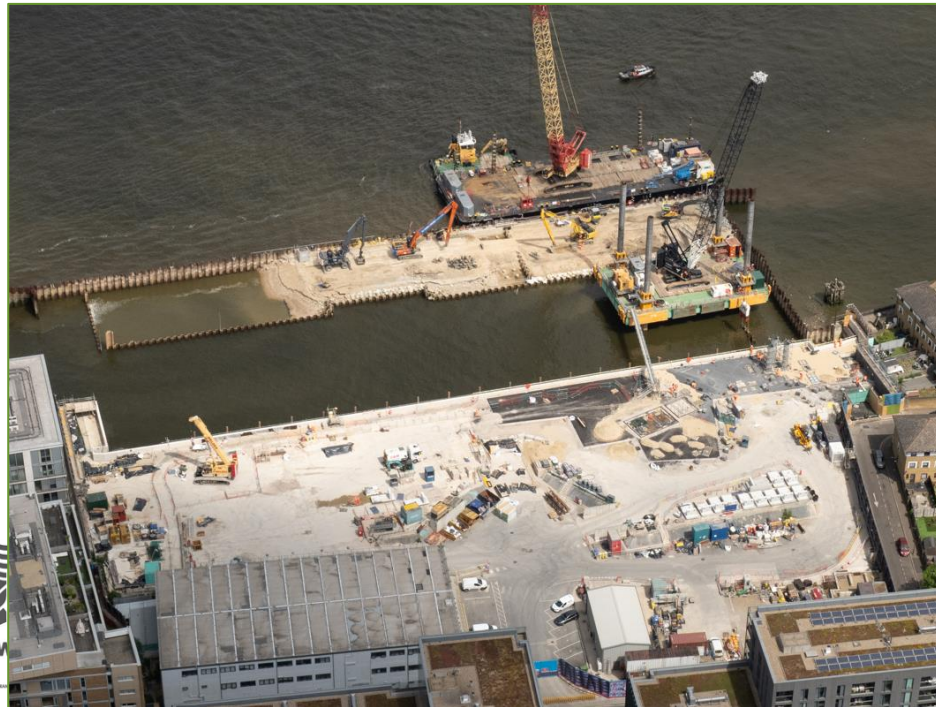
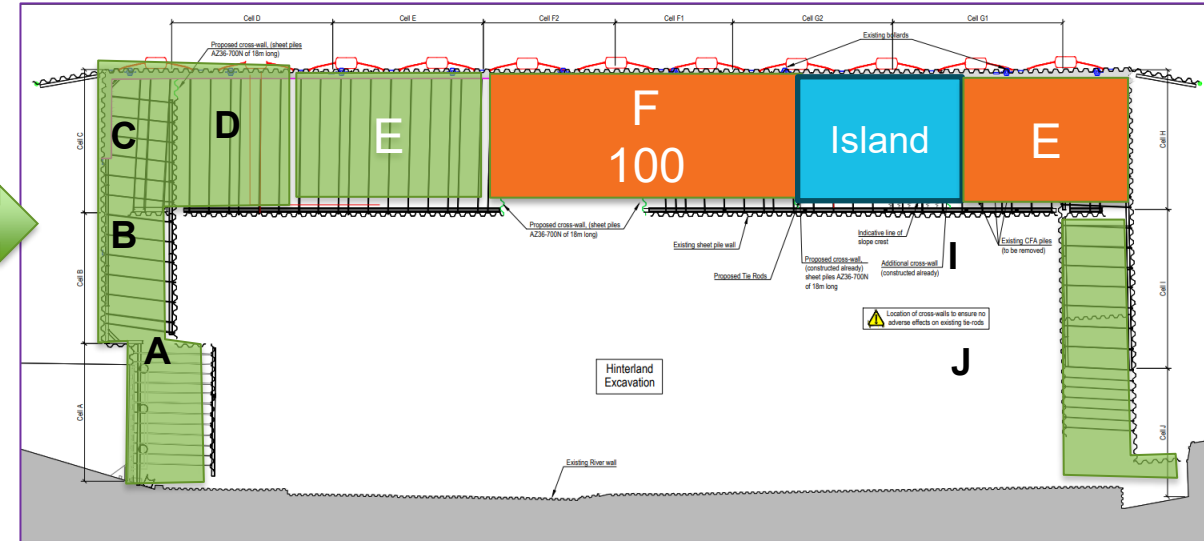




# June

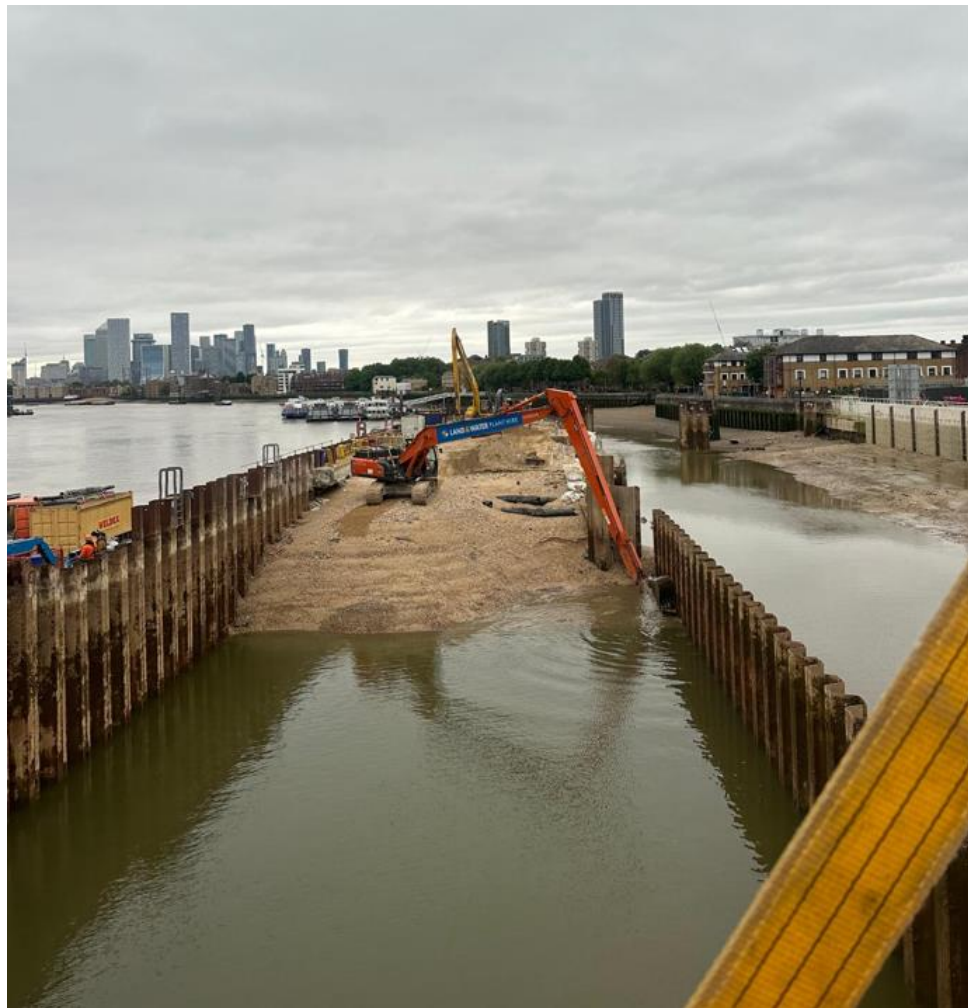


# December



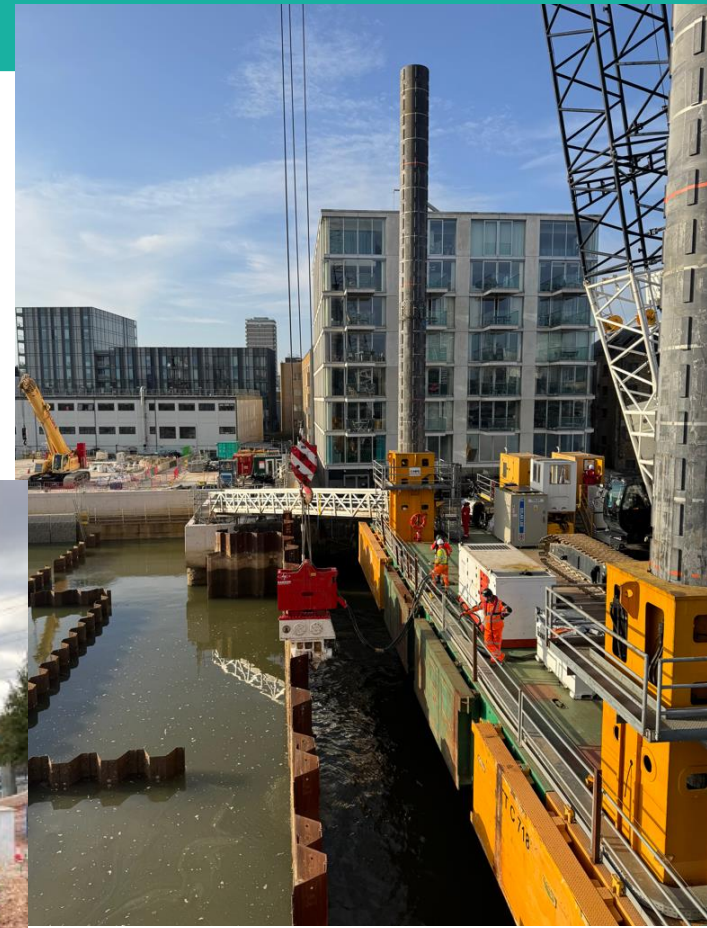


# CHAWF – Cofferdam Removal – Excavation



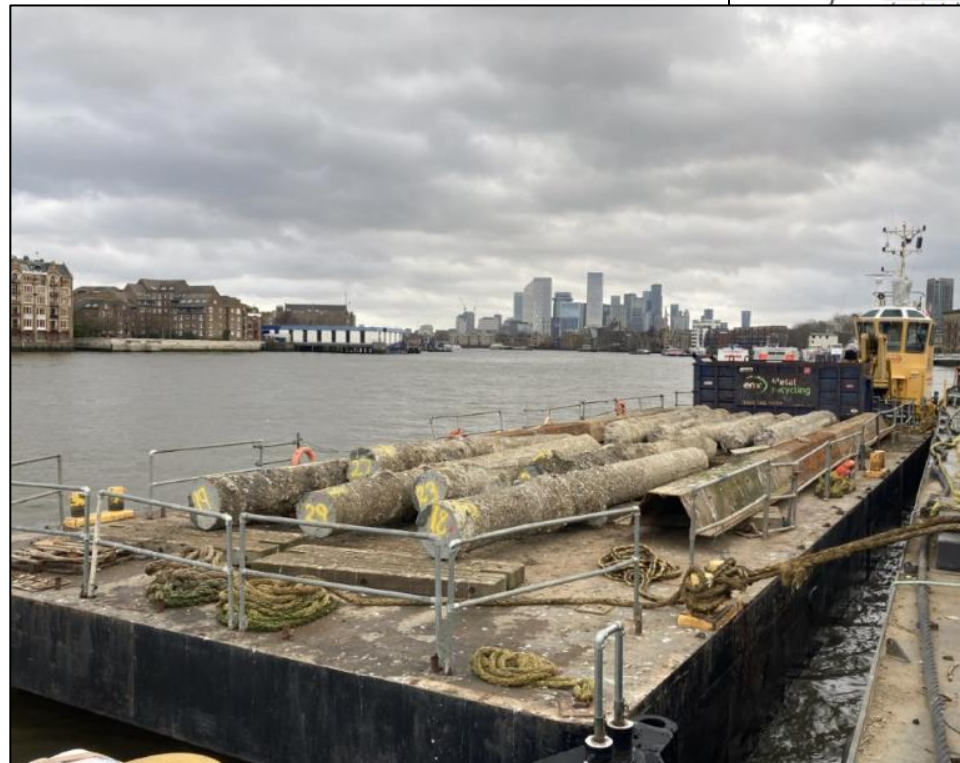
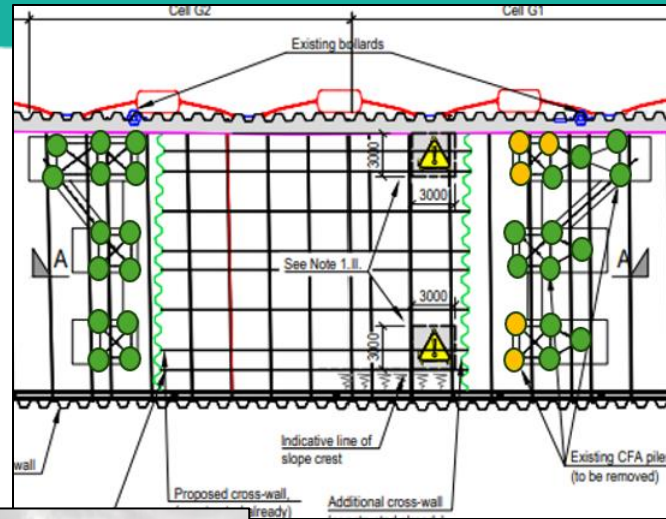


# CHAWF – Cofferdam Removal – Sheet Removal



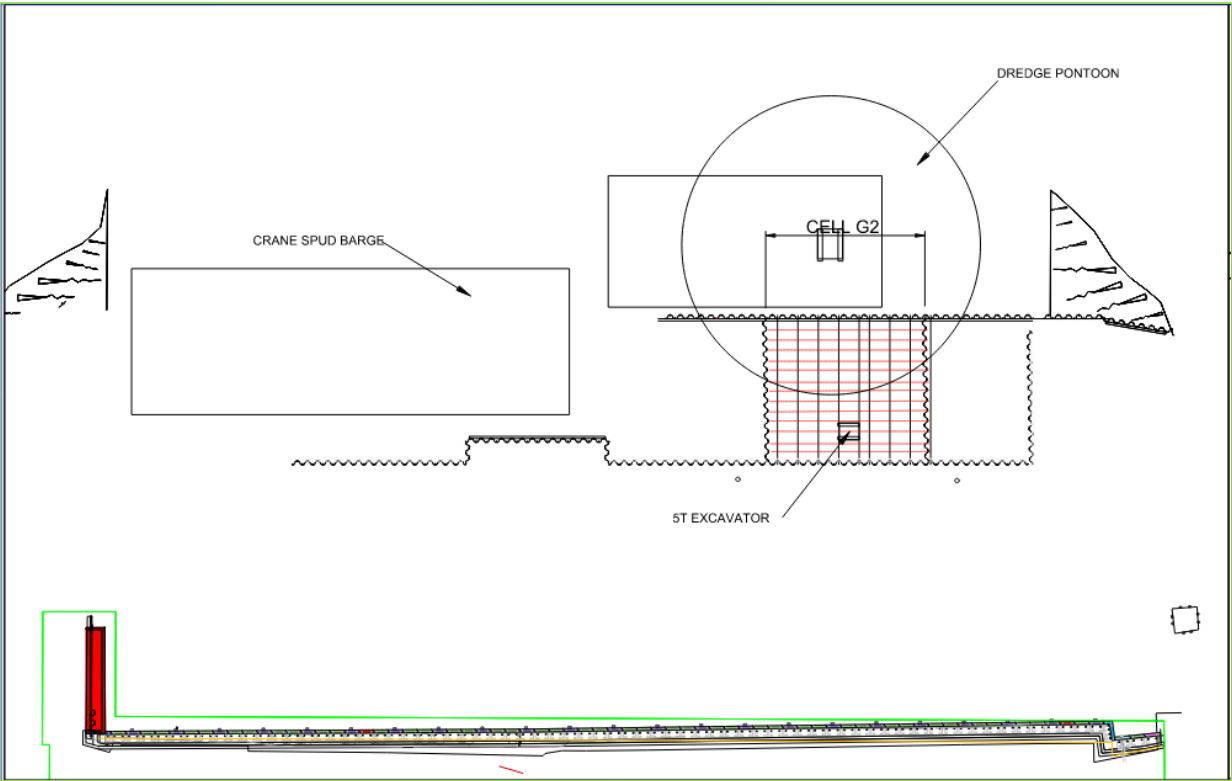


# COFFERDAM REMOVAL – ACTIVITIES – CFA PILE REMOVAL





# CHAWF – Update of Works to Go



## Marine

- Mobilise dredge set to excavate Island and commence foreshore reinstatement works
- 601 – Pontoon to remain on site continue removing CFA and sheet piles

Landside crane to be early January to remove remaining Sheet piles from landside.

Any TAPs (Trigger Action Plan) noise mitigation removal works to commence once final sheet piles are removed

Activity	2025				2026		
	Jan-Mar	Apr-Jun	Jul-Sep	Oct-Dec	Jan-Mar	Apr-Jun	Jul-Sep
Cofferdam Removal							
River Cladding Panel Installation				Complete			
Architecture and Landscaping				Complete			
Site Reinstatement							
Foreshore & River Completion							

# ENVIRONMENT SUMMARY:

## July 2025 – December 2025



### Noise monitoring

0 Section 61 noise exceedances since the last meeting

### Air Quality monitoring

0 air quality exceedances since the last meeting (24h PM10)



Any exceedances shown by our monitors are investigated thoroughly after we are alerted.



# ENVIRONMENT: NOISE AND AIR QUALITY

## SECTION 61 OVERVIEW



### Standard Hours

Monday-Friday: 8am-6pm  
Saturday: 8am -1pm

### Extended Hours

Monday-Friday: 5am-8am & 6pm-10pm  
Saturday: 5am-8am & 1pm-6pm

### Including Tidal Working hours

### Mobilisation / Demob Hours

Standard hours: 7am-8am & 6pm-7pm  
Extended hours: 4:30am-5am & 10pm-10:30pm

Briefings, inspections, safety plant start- up checks, site cleaning, concrete wagons arriving for testing.

### Maintenance Hours

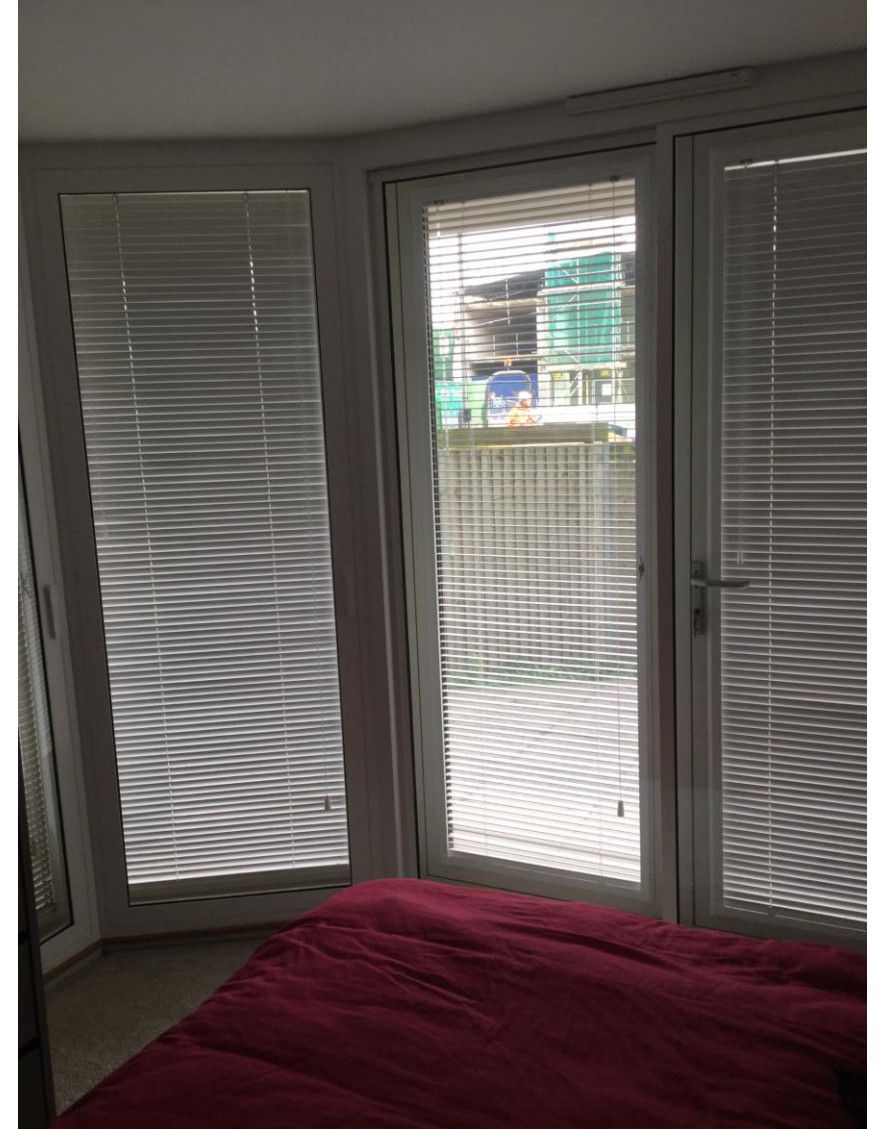
Saturday: 8am-5pm  
Sunday: 10am-4pm

Plant maintenance: installation and maintenance of services

# NOISE MITIGATION - retention or removal

## Reminder:

- At the start of the project, we installed noise mitigation in line with our Trigger Action Plan (TAP) process.
- Typical noise mitigation:
  - Internal secondary glazing
  - Mechanical ventilation units
  - External balcony screens
- As works at Chambers Wharf come to an end, we can either remove the noise mitigation or residents can opt to keep it permanently.
- Letters have been sent and we have established which residents want it removed and which residents want to retain it.
- If you received noise mitigation and haven't been sent a letter, please let us know.





# NOISE MITIGATION - Removal / Retention

## If you told us that you want to have the noise mitigation removed:

- Our contractor, Longsword, will contact you in the coming months to organise the removal of the relevant elements and make good any holes, damage etc.
- It's worth remembering the upcoming residential development which will happen at Chambers Wharf (see images)



## If you told us that you want to retain noise mitigation measures permanently:

- Handover letters have been sent out to formalise your acceptance permanently.

**Axis Court & Luna House** – the freeholder has stated that the external balcony screens must be removed, regardless of leaseholder / resident preferences.



# ICP (Independent Compensation Panel)

## Independent Compensation Panel & fast-track scheme for relevant residents

- The claim form for the Independent Compensation Panel is available here: [www.tideway.london/help-advice/compensation-information/Independent-Compensation-Panel](http://www.tideway.london/help-advice/compensation-information/Independent-Compensation-Panel)
- The Tideway Helpdesk ([helpdesk@tideway.London](mailto:helpdesk@tideway.London)) can submit claims to the Independent Compensation Panel on a resident's behalf, or they can submit a claim directly to the panel: [admin@tidewayicp.london](mailto:admin@tidewayicp.london)
- A fast-track system for mitigation is in place while we remove the cofferdam for previously awarded residents who have a clear view of the site.
- Additional mitigation could include – daily respite, alternative office space, noise cancelling headphones, portable air conditioning units, temporary rehousing etc.



# Staying in touch

- Helpdesk phone - 08000 30 80 80
- Email - [helpdesk@tideway.london](mailto:helpdesk@tideway.london)
- Weekly enewsletter
- Attending the Community Liaison Working Group

Following us on our social media platforms:



[Twitter / X](#)



[Facebook](#)



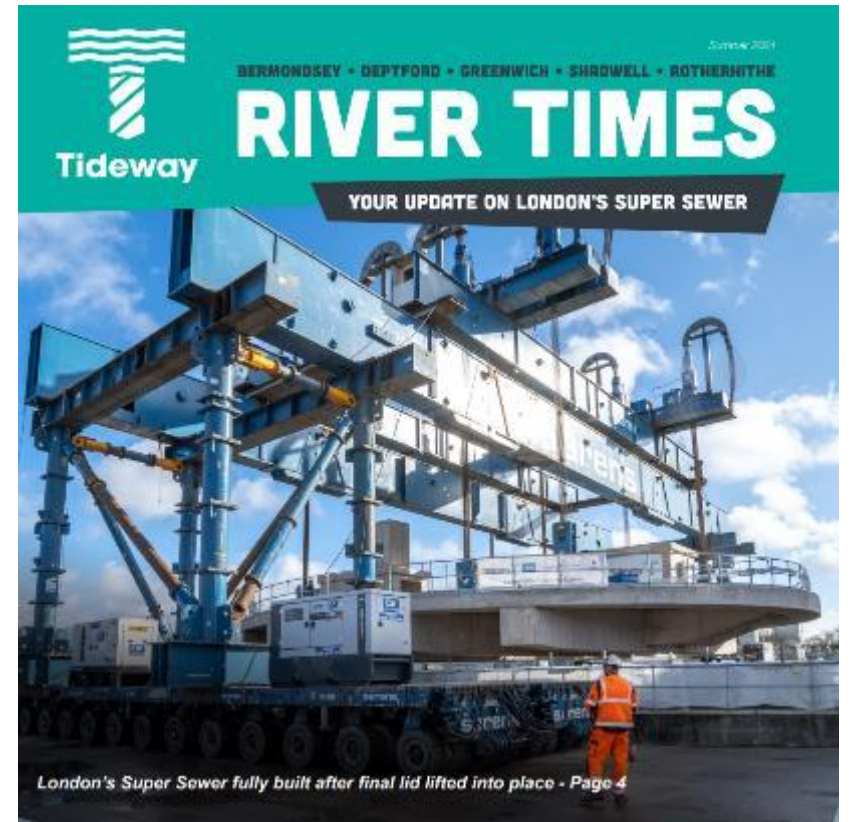
[Instagram](#)



[LinkedIn](#)



[YouTube](#)





# LEGACY



Tideway





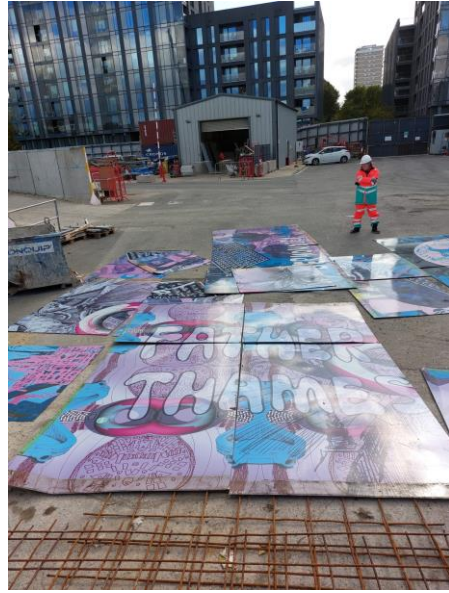


- Tideway won Environmental Finance Impact project / investment of the year (Water sector) award;
- 'Best project – Sustainability' at ICE London Awards;
- Infrastructure award at annual RICS UK Awards;
- Noise Abatement Society's John Connell Award for Innovation with the ICP
- Plus Two awards at BCIA
- Tideway documentary 'Beneath Your Feet' launched & available on Amazon (£10). A record of the Tideway story
- All parliamentary group published a paper on improving delivery of national infrastructure construction projects, incorporating the UCL study last year that focussed on Tideway





- Final souvenir edition of River Times delivered to 250m around the site



- Rotherhithe & Bermondsey Historical Society have re-used some of the Riverside children's CHAWF art hoarding.
- Artist Gail Dickerson's Geology lectern was unveiled this month at Cherry Gardens, funded by Tideway CEF.
- Final two work experience students attended Chambers Wharf in the Summer, making a project total of 74.
- London Youth Rowing raised £70,000 from their Oarsome Challenge. Our team finished 4<sup>th</sup>
- Stephen Lawrence Trust STEM event at CHAWF with local students in October funded by CEF.
- Thames 21 used CHAWF Visitor Centre for annual staff event last week, one former work ex student on Tideway now works for the charity.
- 'Waveform' artwork by Leo Fitzmaurice now installed.
- Tideway have produced a final Legacy report:

[Tideway | Delivering a lasting legacy](#)





# CHAMBERS WHARF COMMUNITY ENHANCEMENT FUND (CEF)

Jacqueline Christie  
Project Manager  
December 2025



# Community Enhancement Fund overview

The Unilateral Undertaking signed with Thames Tideway in 2014 secured approximately an indexed-linked £5,385,000 which has been allocated and being spent on local infrastructure projects.

The final infrastructure project on the Dickens Estate at Scott Lidgett and Wickfield play areas is due to be completed at the end of December 2025.





# CEF Infrastructure Project Scott Lidgett and Wickfield Play Spaces

The full programme of  
playground works will be  
completed in December  
2025.



# Community CEF Applications Overview

- There have been **17** separate voting events.
- A total of **65** applications have been approved by the CEF voting panel (comprising local residents and organisations).
- Of these, **63** applications have met the criteria to secure CEF funding
- **11** applications were not approved by the CEF voting panel



# Community Enhancement Fund

## Final Approved Projects April 2025

No's	Organisations	Projects	Fund
1	Stephen Lawrence Day Foundation	Place Is... workshops	£6,000.00
2	Salmon Youth Centre	Schools out @Salmon Open	£13,790.00
3	Wrayburn TMO	Bike Shelter	£9,000.00
4	Time and Talents	Bermondsey Free 'Shops' and Support	£17,232.00
5	Food bank	Feeding the local community	£16,916.80
6	Downside Fisher Youth Club	Aquatic Academy	£11,143.00
7	The People's Company	North Bermondsey - Animated History Tours	£3,719.00
		<b>Total</b>	<b>£77,800.80</b>

# Stephen Lawrence Place is workshop event



## ***“Feedback***

*”This workshop helped me understand that women can also do what men do and that gender, background and race should not limit anyone from doing what they love the most.”*





# Schools Out @ Salmon Project

Salmon Youth Centre CEF summer programme

## **Germany Exchange Trip (28 July – 4 August 2025)**

Seven young people aged 14–17 participated in a one-week exchange programme in Langenhagen, near Hanover.

## **Camping Residential**

Thirty-three participants (28 young people and 5 adults) attended a camping residential at the Bath and West Showground.

## **11–16s Summer Scheme**

Over five days, young people participated in trips and centre-based activities, including Inflata Nation, bowling, mini-golf, Toca social and dodgeball, basketball, art, music and a spa day.

## **London Youth 5-a-Side Football Tournament**

Eight under-14s represented Salmon in a London-wide tournament, finishing in third place.

## **Feedback**

*“Salmon has helped me with my confidence, taught me many life skills and just been like another family to me.”*

*“Joining Salmon, I’ve been on multiple trips and done many things that I didn’t think I’d ever do in my life.”*

# Wrayburn TMO Bike Hangers

Neighbour disputes with bikes on landings and corridors, causing obstructions and H&S issues for residents and visitors.

They received funding for 2 bike shelters in 2022 from Tideway CEF and they were taken up within first few months. All are let and they have now Install 2 more bike shelters next to the existing ones.





## Time and Talent Bermondsey Free 'Shops' and Support

More Bermondsey residents and families have increased access to practical support: advice services, sewing and repair skill workshops.



# Peoples Company Free Animated tours

A wonderful series of animated tours took place in June which highlight the history of the Bermondsey Settlement, Ada and Alfred Salter, local factories and music hall. Using bygone songs to animate local history and celebrate the community.

This was Free and accessible they bought together residents in the Chambers Wharf area and enhance the life of the community.

The research and a recording of some of the songs, which have not been played since the 19th century, will be deposited with the borough archives as a research tool for the future.

**Follow link to hear recording:**

**[Bermondsey and Rotherhithe Animated Tour | People's Company](#)**

BERMONDSEY AND ROTHERHITHE: THE SOUNDS OF ITS STORY!

## FREE Animated Tours

with People's Company.

Animating local history of Bermondsey  
and Rotherhithe through song.

- 28th of June -

Tour 1: 11am-12.30pm  
Tour 2: 1.30pm-3pm

Click [HERE](#) to book.

FREE REFRESHMENTS PROVIDED.

CLINCY FINCHES, 13 SOLDIER.

Pearl Yard  
BERMONDSEY

PEOPLE'S  
COMPANY

Southwark  
Council  
southwark.gov.uk

NSET



# Downside Youth Centre Aquatic Academy

Providing a rookie lifeguard training for 25 young people aged 11-18, with up to 6 young people aged 16+ selected to go on to gain accredited training in either National Pool Lifeguard Qualification (NPLQ) or STA Swimming Teacher Level 2 Award, equipping them with employable skills.

Other Sessions includes Age UK, Police Training, SEND Classes, University studies, Parent and Toddlers groups

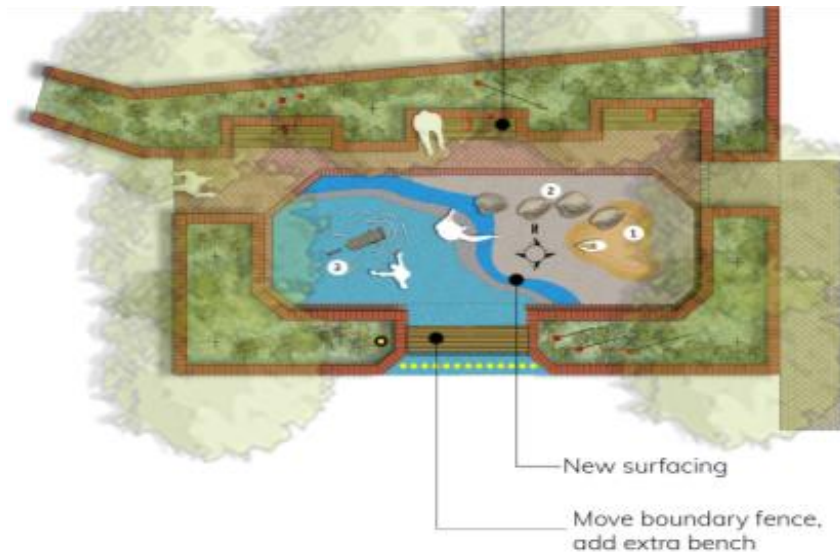


# Pending CEF Projects

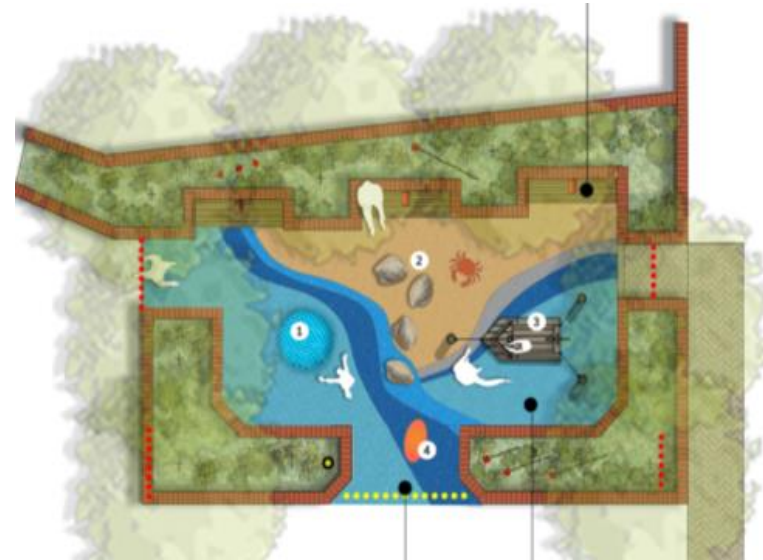
## Cherry Garden Play space

The designs are with the TRA who are running a 2<sup>nd</sup> round of consultation to pick options, due to complete consultation in December 2025.

Option A.



Option B.

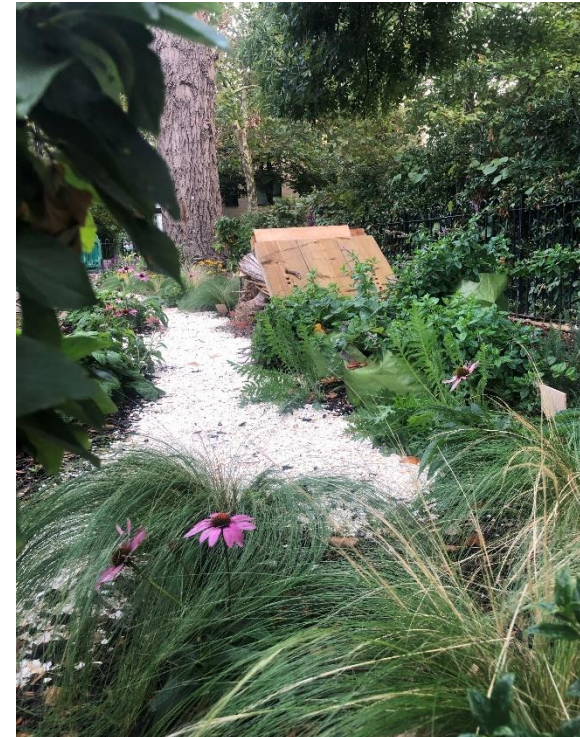




# Pending CEF Projects Cont'd

## Dickens Estate Community greening improvements

Work continues to depave the alley and put in drought resistant plants, adding additional green planters around Tupman and Spenlow house. Project to be completed in March 2026.



# Pending CEF Projects Cont'd

## Tideway Artefact Display Case

Community workshops run by a Freelance Artist exploring layers of the local area through Art and Geology using earth samples collected from the shaft site at Chambers Wharf. A public local display of earth samples, artworks and a film with workshops leading to the design and installation of a history, archaeology and geology panel.

Note: Sample of display panel to be installed at end of the year on the Thames Path.





# Pending CEF Projects Cont'd

## **Fountain Green Square New Fencing and cleaning**

Contractors Sterling Landscape Ltd are due to start work to replace the rotten fencing in the square and clean the pathway.

This work is due to be completed by the end of the year.

# Pending CEF Projects Cont'd

## Feeding the local community

This project has so far not been able to meet the criteria for food safety. The Environment services and Communities' team are working to move foodbank into partnerships working with other food banks to ensure they meet council standards. This work is on-going.

### Chambers Wharf sites





# CEF SPEND

Tideway S106 community projects total spend 2025

Years	Number of Projects	Total spend
2017	7	£78,100.00
2018	3	£57,400.00
2019	6	£134,824.00
2020	6	£22,995.00
2021	6	£49,012.00
2022	5	£120,112.00
2023	15	£305,115.00
2024	9	£155,506.00
2025	7	£77,801.00
<b>Total</b>	<b>64</b>	<b>£1,000,865.00</b>
<b>Balance (overspend)</b>		<b>-£865</b>

# My Role

I have now left my role working on CEF with the local community. Over the past seven years, the most rewarding part was seeing its positive impact on residents and the wider community. Collaborating closely with locals and drawing on their lived experiences helped create more effective, relevant solutions.

Though challenging, it has offered invaluable opportunities for problem-solving and innovation.

Looking back, I am grateful for the chance to contribute to meaningful change and for everything I have learned along the way.

Jackie Christie



# ANY OTHER BUSINESS?



Tideway





# THANK YOU



Tideway

